

ISBN: 979 389656-6

PROCEEDING

The 3rd International Conference on

Product Design and Development 2007

December 12th, 2007
Ruang Sidang II KPTU FT UGM
Yogyakarta, Indonesia





FOREWORD

Product design and development has an important role in the modern life because of rapid progress of science and technology. Regarding to this role and the great contribution from the previous PDD conferences to the progress and development required for the design and development of the new product, it is necessary to conduct in every year.

The third of International Conference on Product Design and Development (PDD) is conducted in Yogyakarta, Indonesia on December from 12th of 2007. The previous PDD, which was started in 2005 is still conducted every year as one of the major international conferences on industrial engineering of the Department of Mechanical & Industrial Engineering, Faculty of Engineering, Gadjah Mada University, Yogyakarta, Indonesia. This international conferences presents 56 papers, which covers these topics :

1. Manufacturing design
2. Management of product design and development
3. New product of manufacture industry and others
4. New product of industry (electronics, pharmacy, chemical, food and agriculture)
5. "Product Design & Development" teaching methodology
6. Rapid prototyping, Ergonomic
7. CAD / CAM
8. Forecasting and Optimizations
9. Materials Development
10. Sustainable Energy Developments

We would like to express our sincere thanks to the advisors of this conferences (Dean of Faculty of Engineering and Head of Mechanical and Industrial Engineering Departement, Gadjah Mada University), the members of Steering and Organizing Committees, Reviewers, and the financial support from industrial companies. Finally, the organizing committee would like to express the sincerely thanks to the authors and all the persons who helped the successful of the sincerely of the 3rd of International conferences on product design and development.

December 2007

Dr. Deendarlianto

Chairman of International Conference on
Product Design & Development 2007



COMMITTEE

Advisor

Prof. Dr. Ir. Indarto, DEA (Dean of Faculty of Engineering Gadjah Mada University)
Dr. Ir. Suhanan, DEA (Head of Mechanical and Industrial Engineering Department Gadjah Mada University, Indonesia)

Steering Committee

Prof. Ir Jamasri, Ph.D (Gadjah Mada University, Indonesia)
Prof. Syed Massod (Swinburne University, Australia)
Prof. Akiharu Ousaka (The University of Tokushima, Japan)
Prof. Akira Kariyasaki (Fukuoka University, Japan)
Dr. Chai Kah Hin (National Univeristy of Singapore)
Ir. Alva E. Tontowi, MSc., Ph.D (Gadjah Mada University, Indonesia)
Ir. Subagyo, Ph.D (Gadjah Mada University, Indonesia)
Prof. Zahari Taha (University of Malaya, Malaysia)
Dr. Khasani, ST., MEng. (Gadjah Mada University, Indonesia)

Organizing Committee

Chairman : Dr. Deendarlianto, ST., MEng.
Secretary : Urip Agus Salim, ST., MEng.
Treasure : Andi Rahardian, ST., MSc.
Members : Dian Ayu P.
Agrahita Yogi Paramadhanti
Andry Oktavianus
Angga Andika P
Anindya Novitasari D.
Anis Citrawati
Brandhika Riko V
Eskanto Nugroho
Fajarruddin Achmad M.
Farah Noor H.



Florentina Ika Khrisna

Hardian

Hasbi

Intan Dwi Febrita

Luthfirrahman Abdullah

Rela

Rio Ade P.

Syamsul Rijal

Wendy

ISBN 979-389656-6

Proceeding The Third International Conference of Product Design and Development 2007

Held on December 2007, 12th

Copyrighth by :

Department of Mechanical and Industrial Engineering

Faculty of Engineering

Gadjah Mada University

Yogyakarta, Indonesia

Notice :

No responsibility is assumed by International Conference of Product Design and Development committee for any injury and or damage to person or property as a matter of products, instructions or ideas contained in the material here in.

Although all advertising material is expected to conform to ethical standards, inclusion, in this publication does not constitute a guarantee or endorsement of the quality or value of such product or of the claims made of it by its manufacturer.



CONTENTS

Foreword	ii
Committee	iv
Contents	vi
I. DESIGN FOR MANUFACTURING / ASSEMBLY	
1. Building An Object Oriented Web Based Application For Endmill Process Tool Path Selection And G-Code Generating On CNC Machine	
Yatna Yuwana Martawirya, Addin Anggalih	I-1
2. Co-Extrusion Process Design Enhance The Beltline Moulding Quality With Parameters Control	
Abdul Talib Bon, Jean Marc Ogier, Ahmad Mahir Razali	I-9
3. Design For Ship Production An Innovative Approach For Increasing Shipyards Productivity	
Sunaryo	I-17
4. Fuzzy-Tabu Search For Dynamic Schedule In Job Shop Problem	
Erna Budhiarti Nababan, Mohamad Shanudin Zakaria, Abdul Razak Hamdan, Salwani Abdullah.....	I-21
5. Powder Mixed Electrical Discharge Machining Effect On Rough And Finish Machining	
Gunawan Setia Prihandana, Tutik Sriani, Mohd. Hamdi Abdul Shukor	I-27
6. Redesign Of Manufacturing Process For Gear Transmission Box Component Of Hand Tractor	
Moses L. Singgih and Ahmad Fatih Fudhla	I-31
7. Sustainable Product Development For Semi Automatic Binding Machine Using Virtual Reality	
Willyanto Anggono, Fandi Dwiputra Suprianto, Ninuk Djonoedji, Bima Adhiputranto.....	I-39
8. Sustainable Technology For Frontal Collision Analysis City Car Chassis Design Using Finite Element Application	
Willyanto Anggono, Fandi Dwiputra Suprianto, Ian Hardianto Siahaan, Dani Saputra Halim	I-45



- 2. Flexible Wheel Chair Design For Normal And Overweight Person**
Kriswanto Widiawan, Fransisca Tipawael, Budi V-9
- 3. Virtual Human Models For Ergonomic Product Design And Development**
Setia Hermawati, Russell Marshall V-13
- 4. Redesign Of Ergonomic Handtruck To Minimize The Risk Of Musculoskeletal Disorder**
Nilda Tri Putri, Elita Amrina, Santy..... V- 21
- 5. Ergonomic Performance Index Development As A Method of Ergonomic Performance Evaluation**
Jefry Ismaro, Rini Dharmastiti, Andi Rahadian Wijaya..... V-29

VI. CAD/CAM

- 1. 3D Reconstruction Of Aircraft Wing Box Surfaces Using Digital Photogrammetry**
Tatacipta Dirgantara, Ichsan S Putra, Deplian Maherdianta VI-1
- 2. Analysis Of Cad Data Using Top-Down And Bottom-Up Approach**
Hambali Boejang, Mohd Rizal Alkahari, Faiz Redza Ramli, Ooi Sen Jye VI-7
- 3. Die Design And Numerical Simulation For Die Casting**
Risdiyono VI-15
- 4. High-Order Unstructured Discontinuous Galerkin For Numerical Simulation Of Ultrasonic Wave Propagation In Elastic Media**
Pranowo , F. soesianto, B. suhendro , l.e. nugroho VI-21
- 5. Numerical Simulation Of Wood Combustion**
Ernie Mat Tokit, Azhar Abdul Aziz, Normah Mohd Ghazali VI-27
- 6. On Development Of Simulated Ct Apparatus For 3D Reconstruction Of Industrial Component**
T. Dirgantara, T. Mengko,A.B. Suksmono,I.S. Putra, H. Setiawan... VI-33
- 7. The Defects Model On Beltline Moulding Process Using Multilayer Perceptron**
Abdul Talib Bon, Jean Marc Ogier, Ahmad Mahir Razali VI-41
- 8. Algorithm Development Of Determining Amount Of Newspaper Delivery**



Nilda Tri Putri, Insannul Kamil, Ricky Azhar VI-47

9. Fixture Design For Cylinder Block By Using Minimize Location And Perpendicular Plane (Case Study: Honda Supra's Cylinder Block)

Nilda Tri Putri, Adam Malik, David Adi Mustika..... VI-57

VII. MATERIALS DEVELOPMENTS

1. Effect Of Flame Heating Position From Weld Line On Fatigue Properties Of Submerged Arc Welded Astm A572 Steel

Sigit Iswahyudi, Mochammad Noer Ilman, M. Refai Muslih, Iwan Sumirat..... VII-1

2. Mechanical Strength And Dimension Accuracy Of Freeform Fabrication Product Of Al-Pe/Silica-Pe Composite

Susilo Adi Widyanto, Alva Edy Tontowi, Jamasri and Heru Santosa Rochardjo.. VII-7

3. Relationship Of Balance Piece Welding Parameter And Fatigue Strength Of Propeller Shaft

Indra Chandra Setiawan, Mochammad Koharudin, Mituhu Setio Djatmiko, Suhodo VII-13

4. Study Of Water Pump Function Recovery After Flood Disaster

Ismed Abdurrachman and Wawan Kurniawan..... VII-18

5. Preliminary Design Of Nij Level Iia-Iv Bulletproof Panels Made From Ramie (*Boehmeria Nivea*) Fiber Reinforced Composite

Eko Marsyahyo, R. Soekrisno, Heru S.B. Rochardjo, Jamasri..... VII-21

6. Effect Of Core Thickness On Impact Properties Of Kenaf-Polyester Sandwich Composite Panel With Albizzia Wood Core

Kuncoro Diharjo, Jamasri, R. Soekrisno, Heru Santoso Budi Rochardjo..... VII-22

VIII. SUSTAINABLE ENERGY DEVELOPMENT

1. Loading Catalyst Influence On Direct Methanol Fuel Cell Power

Eniya Listiani Dewi..... VIII-1

2. Characteristics Of Phase Separation In T-Junction In Air-Water Two-Phase Flow (Phase Separation From A Horizontal Header To Three Downward Branch Pipes)

Tohru Nagshima and Akira Kariyasaki, Akiharu Ousaka..... VIII-5

3. Numerical Solution Of Steady State Free Convection Using Unstructured Discontinuous Galerkin Method

Pranowo & Deendarlianto..... VIII-12



NUMERICAL SOLUTION OF STEADY STATE FREE CONVECTION USING UNSTRUCTURED DISCONTINUOUS GALERKIN METHOD

Pranowo^{1,2} & Deendarlianto³

¹Ph.D. Student of the Department of Electrical Engineering, Faculty of Engineering, Gadjah Mada University, Jalan Grafika No. 2, Yogyakarta 55281, Indonesia

²Lecturer of the Department of Informatics Engineering, Atma Jaya University, Yogyakarta, Indonesia. (Email: pran@mail.uajy.ac.id)

³Lecturer of the Department of Mechanical & Industrial Engineering, Faculty of Engineering, Gadjah Mada University, Yogyakarta, Jalan Grafika No. 2, Yogyakarta 55281, Indonesia. Email: deendar@gmail.com

ABSTRACT

The development of discontinuous Galerkin method in order to solve the steady state of natural convection problem is presented. In the present method, the collocated nodes were used, whereas the velocity, pressure and temperature fields were located on the same nodes. The pseudo-unsteady and explicit low storage fourth orders Runge-Kutta method scheme were used for the time integration. Next, the discontinuous Galerkin finite element and unstructured mesh were employed to calculate the spatial discretization. The difficulty relates to the pressure can be overcome by using an artificial compressibility method. Solutions to the 2-D natural convective flow in concentric annulus have been obtained and compared with available results. The comparisons showed a good agreement.

Keywords: *Natural convection, discontinuous Galerkin, artificial compressibility*

1. INTRODUCTION

The free convective flow, especially in a concentric annulus, can be found in many industrial applications. Such problem commonly occurs in the electrical, nuclear energy fields, as well as in solar energy and thermal storage system. Due to the flow behavior in this problem are very complicated; therefore, it is necessary to clarify the flow structure and the mechanism in details to establish an improved design technique. The numerical method has a powerful ability to investigate the flow behavior and to clarify the predominant factors that influence the flows.

Extensive works in this field have been performed in the past. Takata et al. (1984) used finite difference method to solve 3-D natural convection in an inclined cylindrical annulus. Shu et al. (1999,2000) used Generalized Differential Quadrature (GDQ) to simulate the natural convection in concentric and arbitrarily eccentric annulus. Recently, Shi et al. (2006) proposed a finite difference-based Lattice Boltzmann for solving natural convection in concentric annulus.

The above proposed methods have the difficulties in solving problems with complicated geometries. Ramaswamy (1988) employed finite element method to solve natural convection problems. Finite element method

can handle complicated domains easily. Manzari (1998) used standard galerkin finite element to simulate forced and natural convection heat transfer. Explicit Runge Kutta scheme was used in the calculation of time domain. The procedure is stabilized using an artificial dissipation technique. The continuity equation is modified by employing an artificial compressibility concept in order to couple the pressure and velocity fields of the fluid. Meanwhile a general solution to solve the relating problem is still unclear.

The present study, we concern with the numerical prediction of the natural convection in concentric annulus. The general method is pseudo-unsteady and uses a low storage fourth order Runge Kutta for the time integration as reported by Kennedy and carpenter (1994). The spatial discretization uses a high order nodal discontinuous Galerkin and unstructured mesh. The difficulty relating to the pressure can be overcome by using an artificial compressibility method.

2. PROBLEM DESCRIPTION

In this problem, we considered a Newtonian fluid of kinematic viscosity ν , thermal diffusivity α and thermal expansion coefficient β enclosed in a concentric annulus with inner



radius $r_i = 0.625$ and outer radius $r_o = 1.625$. The vertical (opposite to the gravity vector) and horizontal axis in a coordinate system is defined respectively as y -axis and x -axis. Constant uniform temperatures T_h and T_c ($T_h > T_c$) are imposed at the inner and outer walls, respectively.

An appropriate scaling for the flow regime is characterized by the following reference quantities (Le Quere, 1991): $L = r_o - r_i$ for length; $V = (\alpha/L)Ra^{0.5}$ for velocity, where Ra is the Rayleigh number ($g\beta\Delta TL^3/\nu\alpha$); $t = (L^2/\alpha)Ra^{-0.5}$ for time and the scaled temperature θ is defined as: $(T - T_r)/(T - T_c)$.

By using the above reference quantities, the governing equations is defined as follow:

$$\frac{\partial \mathbf{q}}{\partial t} + \frac{\partial \mathbf{F}}{\partial x} + \frac{\partial \mathbf{G}}{\partial y} = \mathbf{S} \quad (1)$$

$$\mathbf{q} = \begin{bmatrix} p \\ u \\ v \\ \theta \end{bmatrix} \quad \mathbf{F} = \begin{bmatrix} \varepsilon^2 u \\ uu + p - \frac{\text{Pr}}{\text{Ra}^{0.5}} \frac{\partial u}{\partial x} \\ uv - \frac{\text{Pr}}{\text{Ra}^{0.5}} \frac{\partial v}{\partial y} \\ u\theta - \frac{1}{\text{Ra}^{0.5}} \frac{\partial \theta}{\partial x} \end{bmatrix}$$

$$\mathbf{G} = \begin{bmatrix} \varepsilon^2 v \\ uu + p - \frac{\text{Pr}}{\text{Ra}^{0.5}} \frac{\partial u}{\partial x} \\ uv - \frac{\text{Pr}}{\text{Ra}^{0.5}} \frac{\partial v}{\partial y} \\ v\theta - \frac{1}{\text{Ra}^{0.5}} \frac{\partial \theta}{\partial y} \end{bmatrix} \quad \mathbf{S} = \begin{bmatrix} 0 \\ 0 \\ \text{Pr}\theta \\ 0 \end{bmatrix}$$

where u and v are velocity components, p is the deviation from hydrostatic pressure divided by the mean density multiplied by V^2 , and ε is artificial compressibility coefficient. Pr is the Prandtl number (ν/α).

The boundary conditions are as follows

- u, v and $w = 0$ at the walls
- $\theta = 0.5$ on $r = r_i$ and $\theta = -0.5$ on $r = r_o$

Here, pressure and velocity fields are set to zero as initial conditions.

3. DISCRETIZATION

The spatial derivatives are discretized by using a discontinuous galerkin method. The simplified of Eq.(1) according to Galerkin's procedure using the same basis function ϕ within each element is defined below:

$$\begin{aligned} \left(\phi, \frac{\partial \mathbf{q}}{\partial t} + \mathbf{A} \frac{\partial \mathbf{q}}{\partial x} + \mathbf{B} \frac{\partial \mathbf{q}}{\partial y} \right) &= 0 \\ \Leftrightarrow \left(\phi, \frac{\partial \mathbf{q}}{\partial t} \right)_{\Omega} + \left(\phi, \mathbf{A} n_x \mathbf{q} + \mathbf{B} n_y \mathbf{q} \right)_{\partial \Omega} - \left(\frac{\partial}{\partial x} (\mathbf{A} \phi), \mathbf{q} \right)_{\partial \Omega} \\ - \left(\frac{\partial}{\partial y} (\mathbf{B} \phi), \mathbf{q} \right)_{\partial \Omega} &= 0 \end{aligned} \quad (2)$$

Here (...) represents the normal $2L$ inner product and the second term is flux vector. The mathematical manipulation of the flux vector is as below:

$$\begin{aligned} \left(\phi, \frac{\partial \mathbf{q}}{\partial t} + \mathbf{A} \frac{\partial \mathbf{q}}{\partial x} + \mathbf{B} \frac{\partial \mathbf{q}}{\partial y} \right)_{\Omega} + \\ \left(\phi, \mathbf{A} n_x + \mathbf{B} n_y \right) (\hat{\mathbf{q}}^- - \hat{\mathbf{q}}^+)_{\partial \Omega} = 0 \end{aligned} \quad (3)$$

where,

$$\hat{\mathbf{q}}^-|_{\partial \Omega} = \hat{\mathbf{q}}^-(\mathbf{q}^-, \mathbf{q}^+)|_{\partial \Omega}$$

In this problem, the numerical flux vector is calculated by using the Lax-Friedrich flux.

$$\begin{aligned} \left(\phi, \frac{\partial \mathbf{q}}{\partial t} + \mathbf{A} \frac{\partial \mathbf{q}}{\partial x} + \mathbf{B} \frac{\partial \mathbf{q}}{\partial y} \right)_{\Omega} + \\ \left(\phi, \frac{(\mathbf{A} n_x + \mathbf{B} n_y)}{2} [\mathbf{q}] \right)_{\partial \Omega} - \left(\phi, \frac{\lambda}{2} [\mathbf{q}] \right)_{\partial \Omega} = 0 \end{aligned} \quad (4)$$

where $[\mathbf{q}] = \mathbf{q}^+ - \mathbf{q}^-$ and $\lambda = \max(\sqrt{(u^2 + v^2) + \varepsilon^2})$ is the largest wave speed. Here, we took the Kornwinder Dubiner function on straight sided triangle as the basis written in equation 5 (see Figs. 1 and 2):

$$\begin{aligned} \phi_{ij}(r, s) = \\ \sqrt{\frac{2i+1}{2}} \sqrt{\frac{2i+2j+2}{2}} P_i^{0,0} \left(\frac{2(1+r)}{(1-s)} - 1 \right) P_j^{2+i,0}(s) \end{aligned} \quad (5)$$



where, $P^{\alpha,\beta}$ is orthogonal Jacobi polynomial

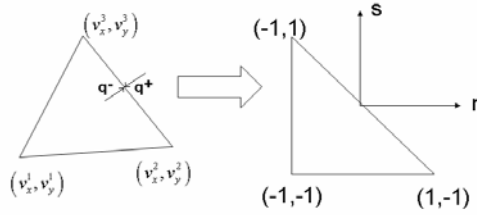


Figure 1.

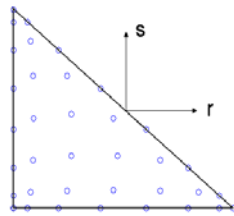


Figure 2.

Seventh order Gauss Lobatto Quadrature Nodes

The vector $\mathbf{q} = (p \ u \ v \ \theta)^T$ is expanded using equation (5) as follows:

$$p(r, s) = \sum_{i=0}^N \sum_{j=0}^{N-i} \phi_{ij}(r, s) \hat{p}_{ij} \quad (6)$$

$$p(r_n, s_n) = \sum_{m=1}^{m=M} \mathbf{V}_{nm} \hat{p}_m$$

$$\hat{p}_m = \sum_{i=1}^{m=M} (\mathbf{V}^{-1})_{mj} p(r_j, s_j)$$

(7)

$$\frac{\partial p}{\partial r}(r, s) = \sum_{i=0}^N \sum_{j=0}^{N-i} \frac{\partial \phi_{ij}}{\partial r}(r, s) \hat{p}_{ij} = \hat{\mathbf{D}}^r \mathbf{V}^{-1} p(r, s) \quad (8)$$

$$\frac{\partial p}{\partial s}(r, s) = \sum_{i=0}^N \sum_{j=0}^{N-i} \frac{\partial \phi_{ij}}{\partial s}(r, s) \hat{p}_{ij} = \hat{\mathbf{D}}^s \mathbf{V}^{-1} p(r, s)$$

$$\hat{\mathbf{D}}^r = \frac{\partial \phi}{\partial r}$$

$$\hat{\mathbf{D}}^s = \frac{\partial \phi}{\partial s}$$

where \mathbf{V}_{ij} and N are Vandermonde matrix dan the order of Jacobi polynomial respectively.

The second order terms in equation (1) are solved using local discontinuous galerkin (LDG) method with central fluxes as suggested

by Warburton (2003). The semi discrete Eq. (8) is integrated in time marching by using five stage of fourth order 2N-storage Runge-Kutta scheme as developed by Carpenter & Kennedy (1994). The final equations are found as written in Eqs. (9) and (10) for the heat rate and the 5-stage of 2N-storage Runge-Kutta algorithm respectively.

$$\frac{d\mathbf{q}}{dt} = L[\mathbf{q}(t)] \quad (9)$$

$$d\mathbf{q}_j = A_j d\mathbf{q}_{j-1} + hL(\mathbf{q}_j)$$

$$\mathbf{q}_j = \mathbf{q}_{j-1} + B_j + d\mathbf{q}_j \quad (10)$$

where h is the time step. The vectors A and B are the coefficients that will be used to determine the properties of the scheme.

The algorithm is implemented as follows.

1. Define the initial and boundary conditions for the pressure, velocities and temperature ($p^n, u^n, v^n, w^n, \theta^n$).
2. Solve the equation (1) by Runge Kutta method to obtain $u^{n+1}, v^{n+1}, w^{n+1}$ and θ^{n+1} .
3. Calculate $error = \frac{\sum |\theta^{n+1} - \theta^n|}{\sum nodes}$, if error less

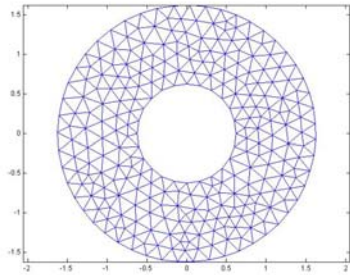
than tolerance or if iterations is equal to the limit, the calculation will be finished. In addition, the results have no a physical meaning, if the steady state can not be achieved.

4. RESULTS

The implementation of numerical calculation was done by using the Matlab on 1600 MHz Centrino Duo personal computer. The Rayleigh (Ra) numbers were varied from 2.38×10^3 to 1.02×10^5 . We used the single mesh for all the ranges of Ra numbers. The mesh consisted of 478 elements. For all the calculation, we took a fixed order of polynomial $N=4$, Prandtl number is 0.717 and fixed artificial compressibility coefficients is equal to unity.



The calculation result of the isotherms at steady states for different Ra and Pr numbers are shown in Fig. 4.



e 3.
Mesh

Figur

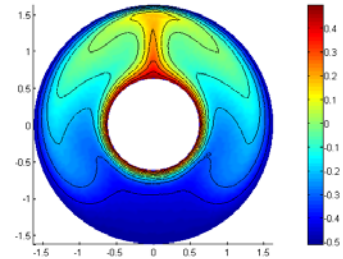


Fig. 4e. Isotherm of $Ra=1.02 \times 10^5$

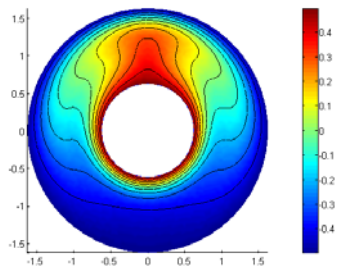


Fig. 4b. Isotherm for $Ra=9.50 \times 10^3$

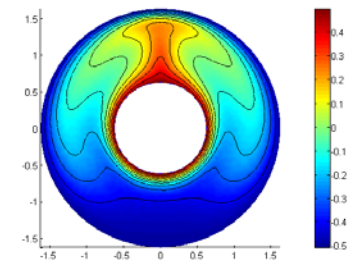
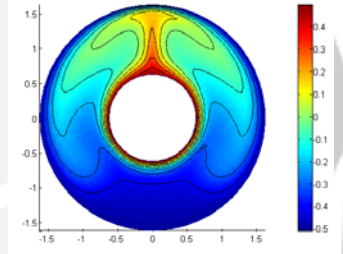


Fig. 4c. Isotherm of $Ra=3.20 \times 10^4$

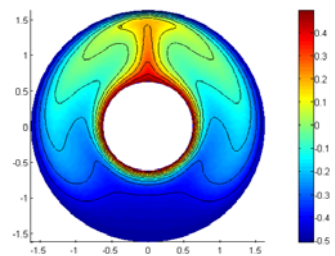
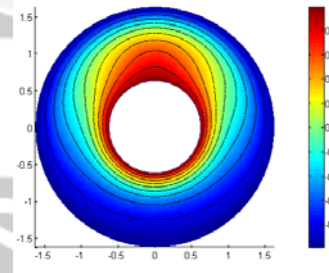


Fig.4d. Isotherm of $Ra=6.19 \times 10^4$



From fig.(4) it is shown clearly that at low Ra number, the fluid motion driven by the buoyancy force is slow, leading to the strong diffusion. Consequently, the corresponding isothermals exhibit rather slight difference as compared to those of pure heat conduction between the annulus. On the other hand, when Ra number is increased, the buoyancy force accelerates the circulation of fluid flow and natural convection is significantly enhanced. The above-discussed behaviors are also found in the previous numerical study as reported by Shi et al. (2005).

Regarding the effect of an increasing of the Rayleigh number on the mean value of Nusselt number is shown in Table 1. The results indicated that a good agreement among the present numerical results, the previous proposed experimental data, and the previous numerical resulted by the finite difference Lattice Boltzmann (FDLB) method (see Shi et al., 2006). Here, the mean value of Nu was computed by the bellow equations:

$$Nu_{mean} = \frac{1}{2}(Nu_{inner} + Nu_{outer}) \quad (11)$$

$$Nu_{inner} = -\frac{1}{2\pi} \oint_{S_{inner}} \left(\frac{\partial\theta}{\partial x} n_x + \frac{\partial\theta}{\partial y} n_y \right) dS$$

$$Nu_{outer} = -\frac{1}{2\pi} \oint_{S_{outer}} \left(\frac{\partial\theta}{\partial x} n_x + \frac{\partial\theta}{\partial y} n_y \right) dS \quad (12)$$

(13)

Table 1
The mean value of Nusselt number

Ra	Present work	Experimental* (Kuhn & Goldstein)	FDLB*
3.28x10 ³	1.363	1.38	1.320
9.50x10 ³	2.055	2.01	1.999
3.20x10 ⁴	2.861	2.89	2.911
6.19x10 ⁴	3.318	3.32	3.361
1.02x10 ⁵	3.741	3.66	3.531

* adopted from: Shi et al. (2006)

6. CONCLUSION

In this paper, we have presented a discontinuous galerkin method for solving natural convection in artificial compressibility formulation. The method is fully explicit and

exhibits good numerical stability. The numerical results have a good agreement with the proposed experimental and numerical results reported in the previous studies.

7.ACKNOWLEDGMENT

We are very grateful to Prof. Hesthaven from Brown University for the valuable discussion and providing his Matlab code.

REFERENCES

- Carpenter M. H. and Kennedy C. A., 1994. *Fourth-order 2N-Storage Runge-Kutta Schemes*, NASA Technical Memorandum 109112, NASA Langley Research Center, Hampton, Virginia.
- Manzari, M. T., 1999. *An explicit finite element algorithm for convection heat transfer problems*, International Journal of Numerical Methods for Heat & Fluid Flow. Bradford: 1999. Vol. 9-8, p. 860.
- Quere, P. Le, 1990. *Accurate Solutions to The Square Thermally Driven Cavity at High Rayleigh Number*, International Journal of Computers & Fluids, Vol. 20, No. 1.
- Ramaswamy, 1988. *Finite Element Solution for Advection and Natural Convection Flows*, International Journal of Computers & Fluids, Vol. 16, No. 4.
- Shi, Y., Zhao, T. S., and Guo, Z. L., 2006. *Finite difference-based lattice Boltzmann simulation of natural convection heat transfer in a horizontal concentric annulus*, International Journal of Computers & Fluids 35, pp. 1-15.
- Shu, C., 1999. *Application of Differential Quadrature Method to Simulate Natural Convection in a Concentric Annulus*, International Journal for Numerical Methods in Fluids, Vol. 30, 977-933.
- Shu, C., Yeo, K. S. and Yao, Q., 2000. *An Efficient Approach to Simulate Natural Convection in Arbitrarily Eccentric Annuli by Vorticity-Stream Function Formulation*, Numerical Heat Transfer, Part A, Vol. 38, 739-75.
- Takata et al.,1984. *Three Dimensional Natural Convection in An Inclined Cylindrical Annulus*, Int. J. Heat Mass Transfer, Vol. 27, No. 5, pp. 747-754.
- Warburton, T., 2003. *Numerical Differential Equation : Discontinuous Galerkin Method*, Lecture notes, University of New Mexico.



*The 3rd International Conference on Product Design & Development 2007
December 12 th 2007.Jogjakarta, Indonesia*

