

BAB 6

KESIMPULAN DAN SARAN

6.1. Kesimpulan

Setelah melakukan penelitian dan menganalisis data yang diperoleh, maka diperoleh kesimpulan sebagai berikut :

- a) Cara menjadwal yang sesuai dengan kondisi di Keramik Kreatif ialah menggunakan penjadwalan forward dengan prioritas *First Come First Serve (FCFS)* dan memperhatikan jumlah operator yang dibutuhkan karena ingin didapatkan *Completion Time* terkecil.
- b) Hasil dari membandingkan penjadwalan awal dengan penjadwalan usulan diketahui bahwa order 1 bila dikerjakan oleh satu operator akan melebihi batas waktu yang dijanjikan, karena itu order 1 kemudian dikerjakan oleh dua operator sehingga completion timenya bisa lebih kecil.

6.2. Saran

Sebaiknya keramik Kreatif melakukan perluasan pemasaran agar dapat meningkatkan jumlah order, sehingga kinerja operator dapat lebih produktif dan maksimal. Hal ini didapat dari hasil penelitian yang ditunjukkan dengan *Gantt Chart*.

DAFTAR PUSTAKA

- Ahyari, A., 1985, *Manajemen Perencanaan Sistem Produksi*, Ed 4, BPFE, Yogya.
- Ariyono, V., Purnama, L.I., Wigati, Y.S.S., 2002, *Diktat Kuliah Perencanaan dan Pengendalian Produksi, Program Studi Teknik Industri Universitas Atma jaya Yogya*, Yogyakarta.
- Baker, K.R., 1994, *Introduction To Sequencing and Scheduling*, John Wiley & Sons, New York.
- Buffa, E.S., Sarin, R.K., 1995, *Manajemen Operasi dan Produksi Modern*, terjemahan (Maulana, A.), John Wiley & Sons, New York.
- Conway, R.W., Maxwell, W.L., Miller, L.W., 1967, *Theory of Scheduling*, Addison Wesley Publishing, Massachusetts.
- Chase, R.B., Aquilano, N.J., Jacobs, F.R., 2001, *Operations Management for Competitive Advantage*, 9th Edition, Mc Graw Hill, New York.
- Cok, Y., 1997, *Penjadwalan n Pekerjaan Pada m Mesin Dalam Aliran Flow Shop*, Skripsi, Fakultas Teknologi Industri, Universitas Atma Jaya Yogyakarta, Yogyakarta.
- Dilworth, J.B., 1992, *Operation Management, Design, Planning, and Control for Manufacturing and Service*, Mc Graw Hill.
- French, S., 1982, *Sequencing and Scheduling : an Introduction to the Mathematics of the Job Shop*, Horwood, Chichester, U.K.
- Gaspersz, V., 1998, *Production Planning and Inventory Control*, Gramedia.

Pandoe, J., 2003, Penjadwalan Produksi Job Shop Dengan CPM dan Mempertimbangkan Lot Splitting, Skripsi, Fakultas Teknologi Industri, Universitas Atma Jaya Yogyakarta, Yogyakarta.

Patria, E.D., 2006, Penjadwalan Job Shop Pada Pabrik Garmen, Skripsi, Fakultas Teknologi Industri, Universitas Atma Jaya Yogyakarta, Yogyakarta.

Putra, P.K.D.S., 2003, Diktat Kuliah Sistem Produksi, Program Studi Teknik Industri Universitas Atma Jaya Yogya, Yogyakarta.

Valentino, 1997, Penjadwalan Pada Flow Shop Dengan Algoritma Genetik Untuk Meminimalkan Makespan, Flow Time, dan Idle Time, Skripsi, Fakultas Teknologi Industri, Universitas Atma Jaya Yogyakarta, Yogyakarta.

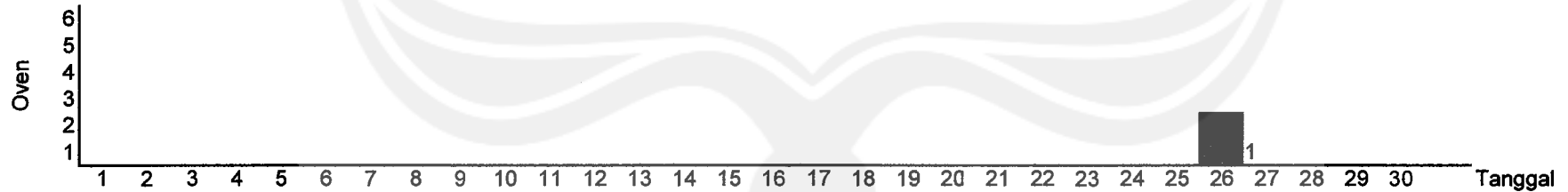
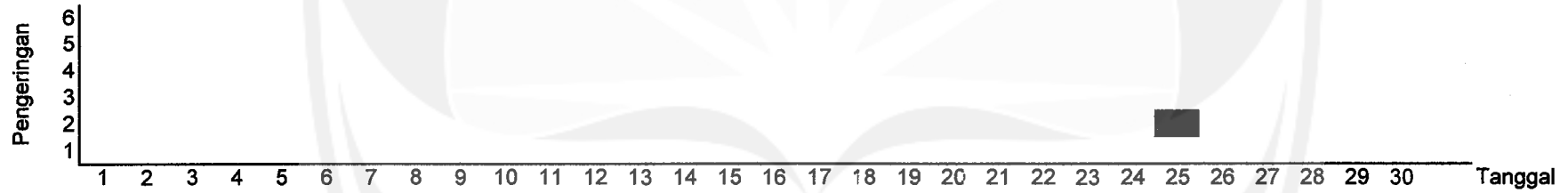
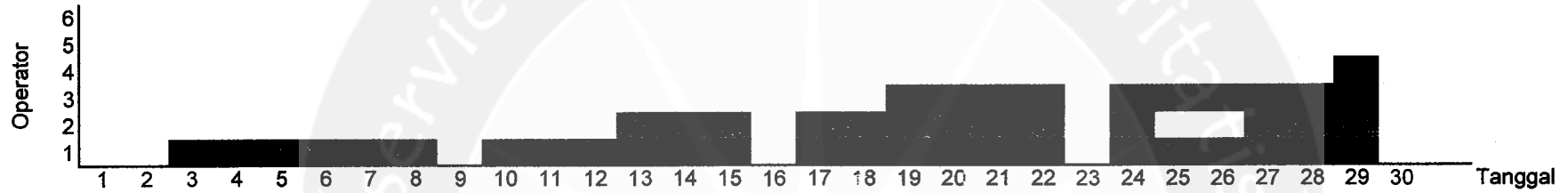




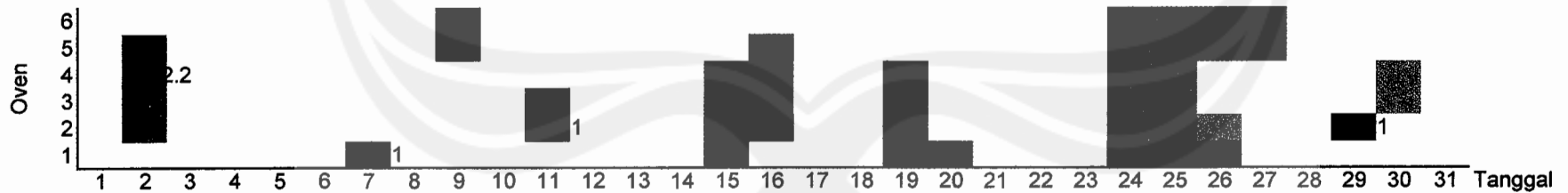
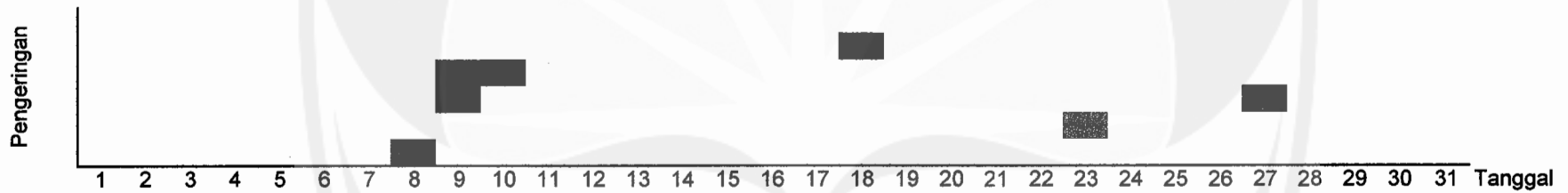
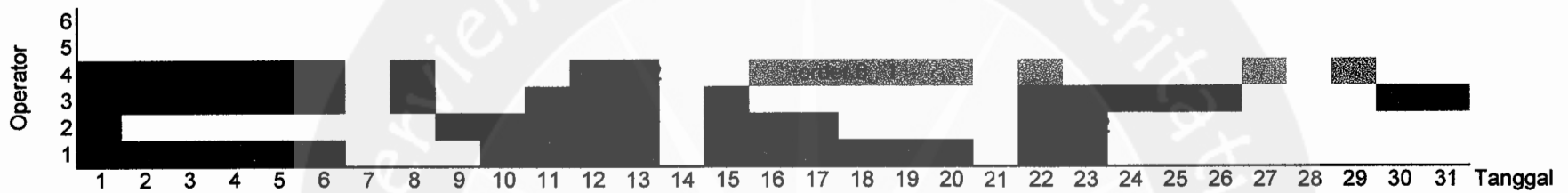
LAMPIRAN I

Penjadwalan Awal

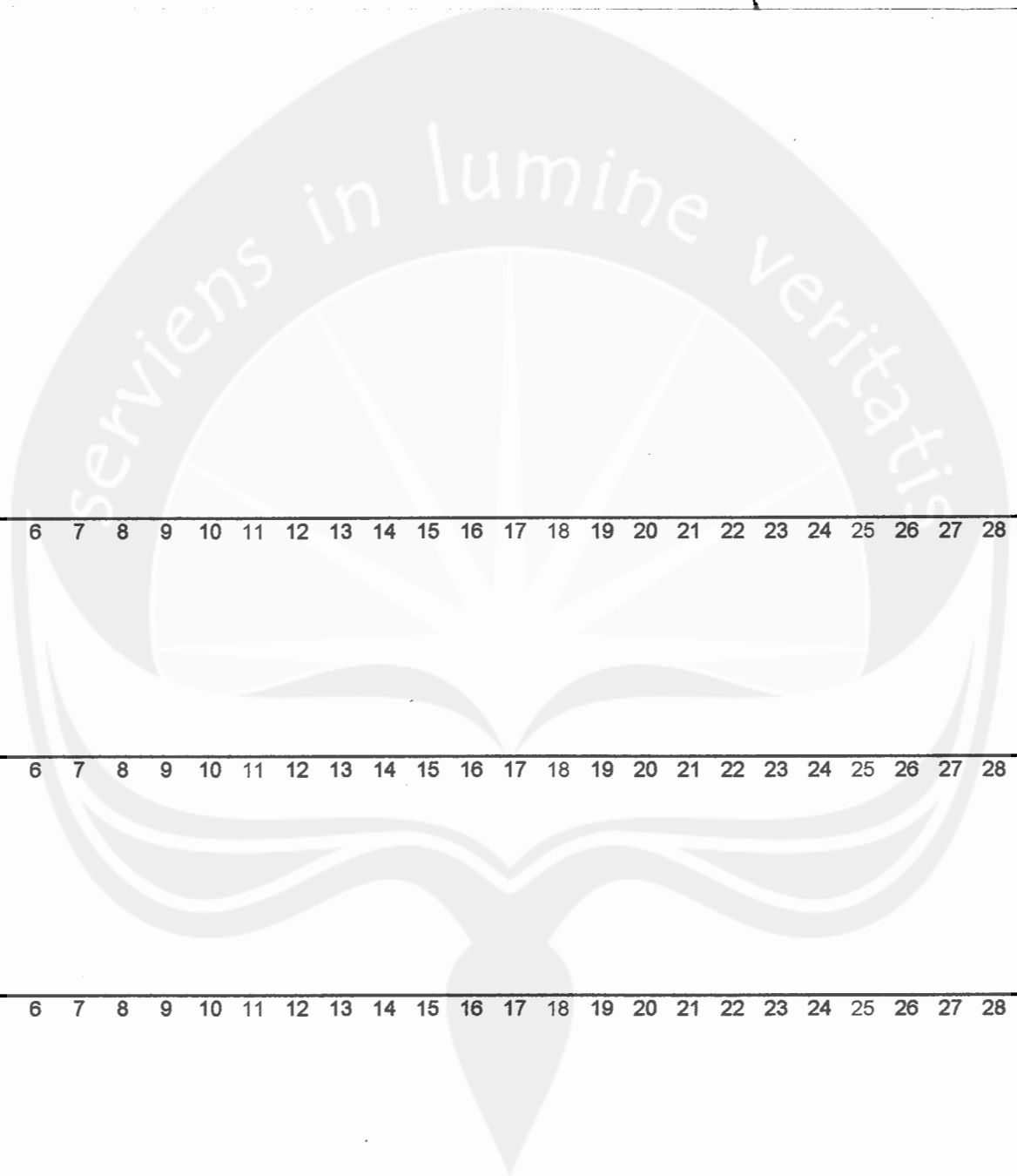
Jadwal Awal
Jadwal Bulan April



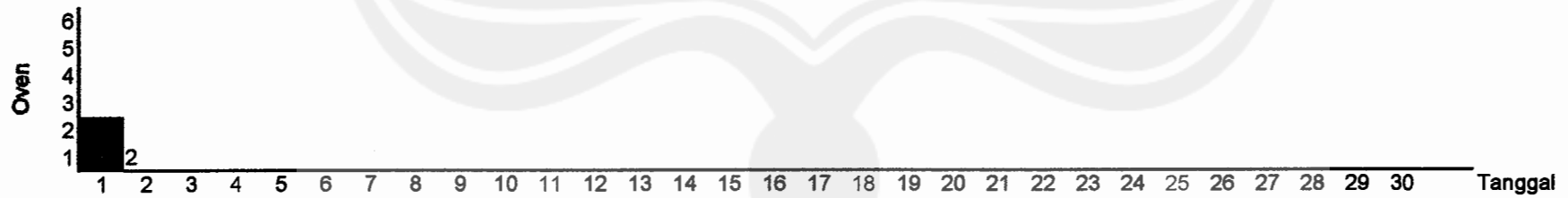
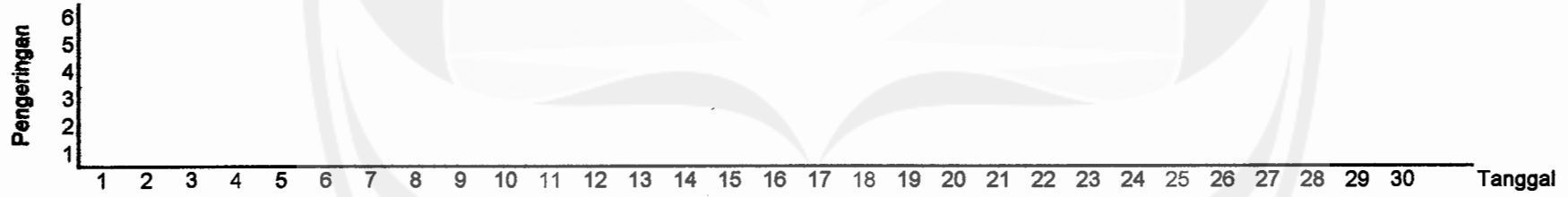
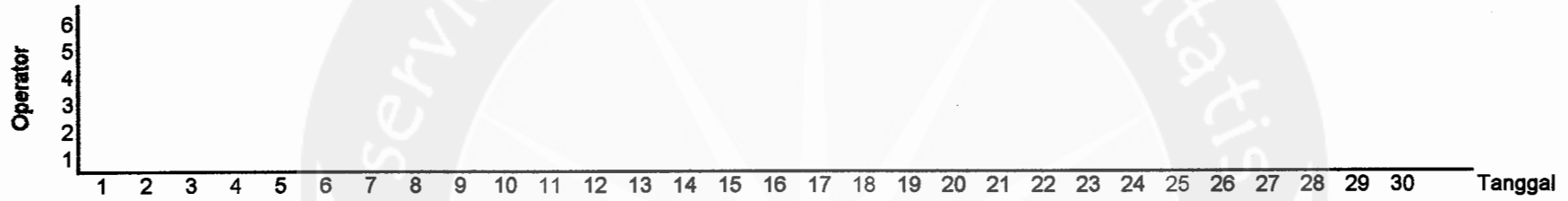
Jadwal Bulan Mei



Jadwal Bulan Juni



Jadwal Bulan Juni

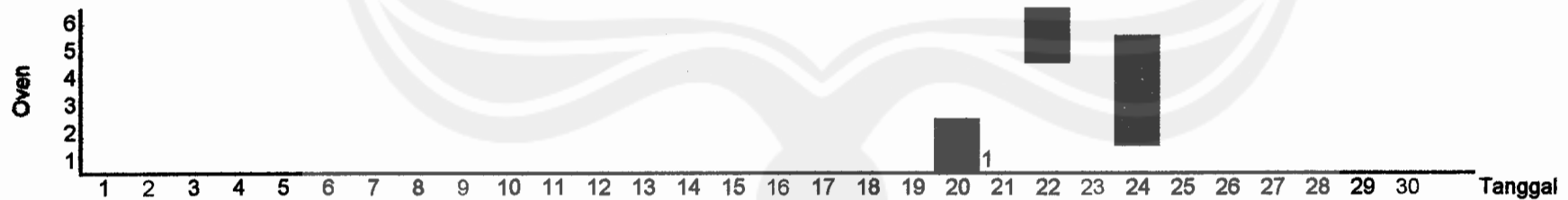
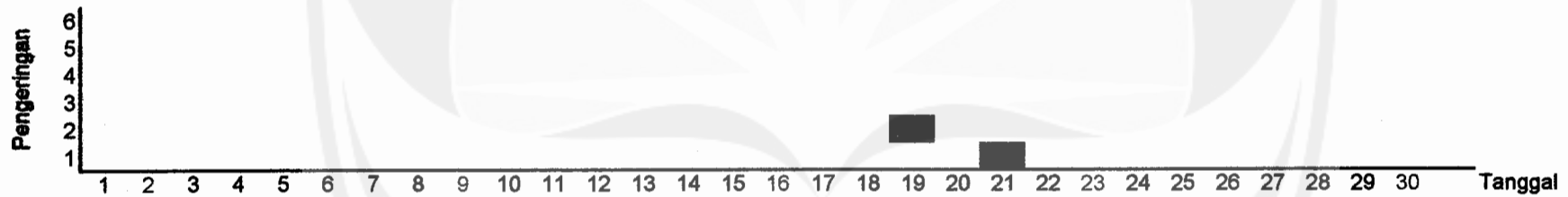
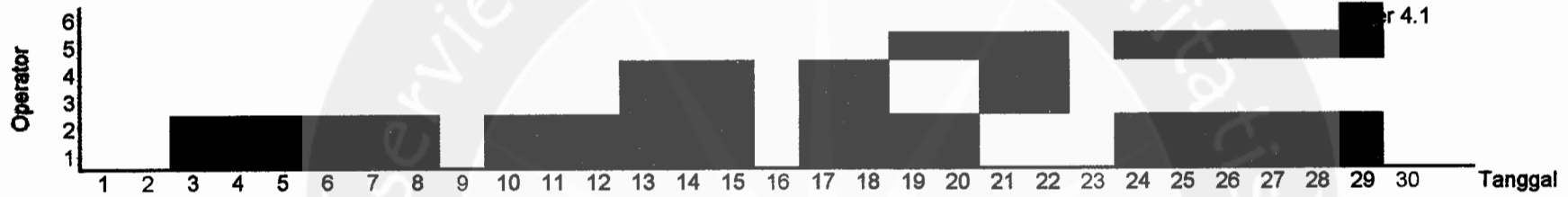


serviens in lumine veritatis

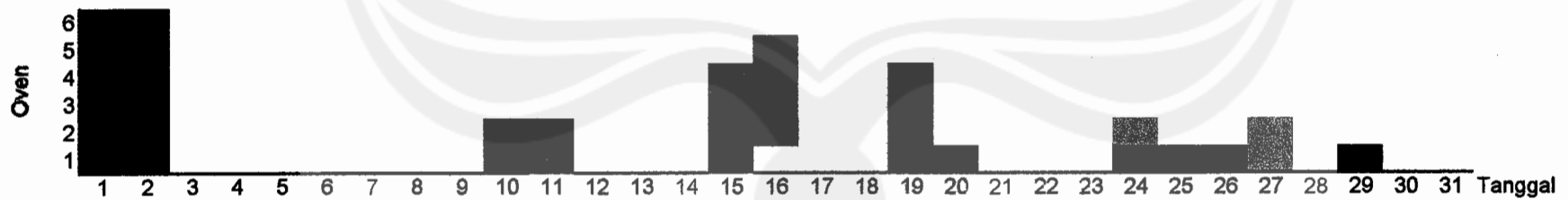
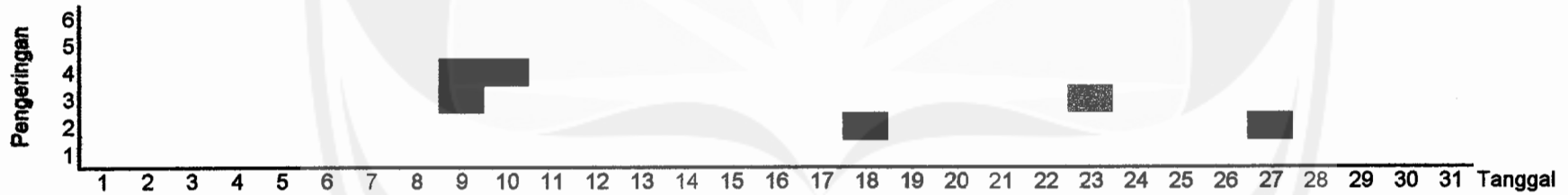
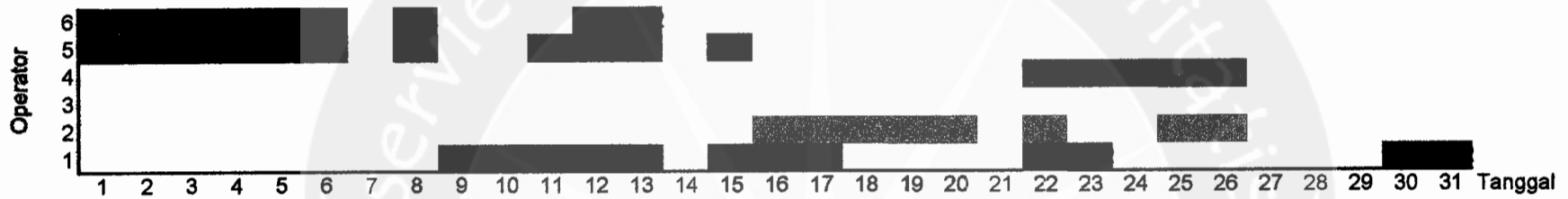
LAMPIRAN 2

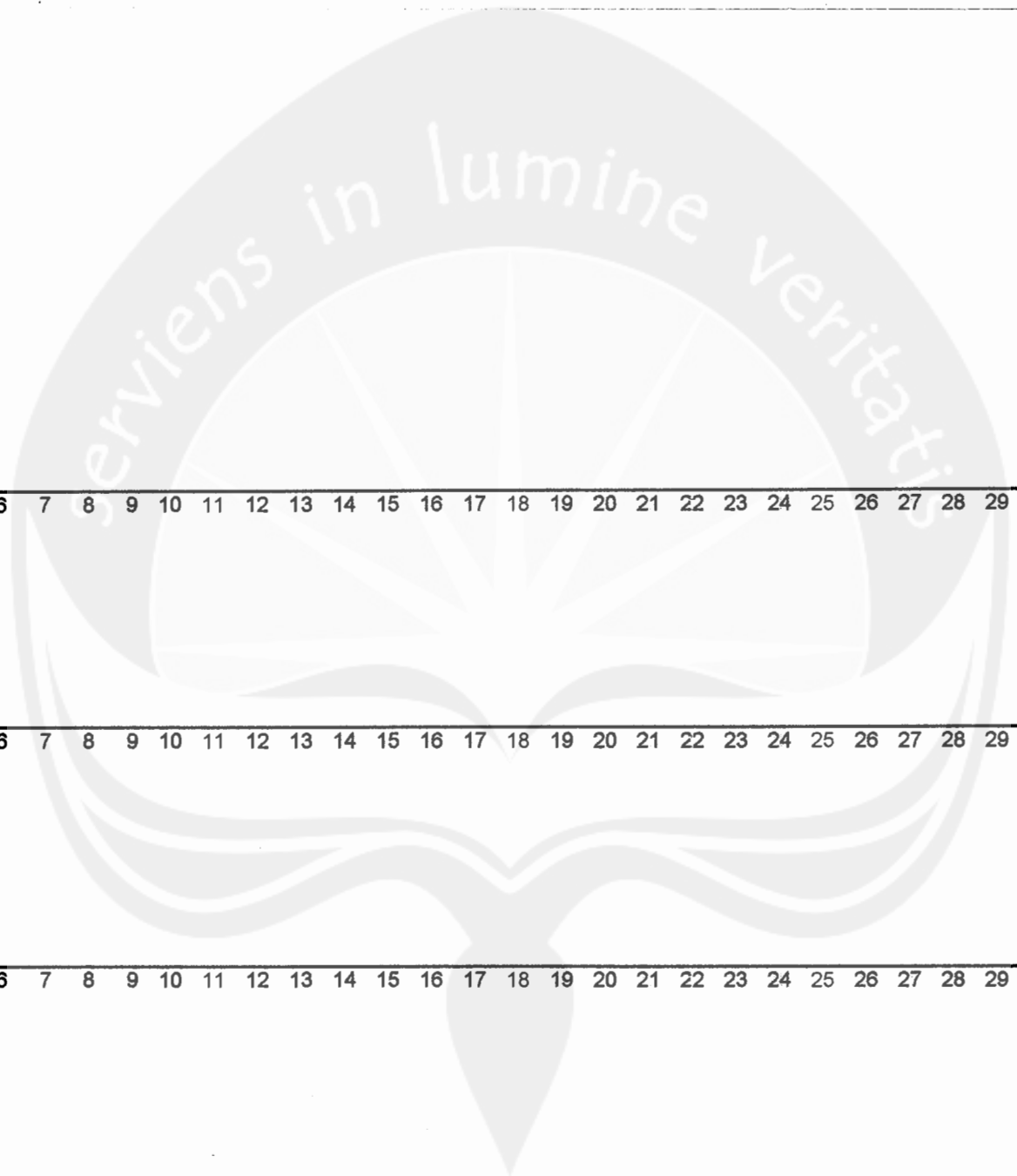
Penjadwalan Usulan

Jadwal Perbaikan Forward
 Jadwal Bulan April

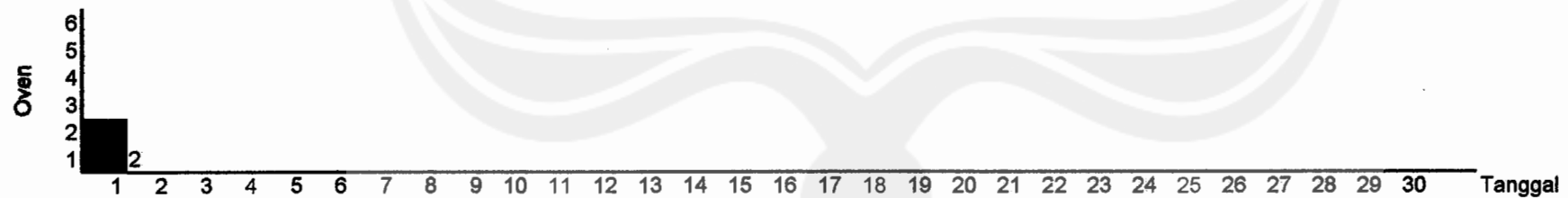
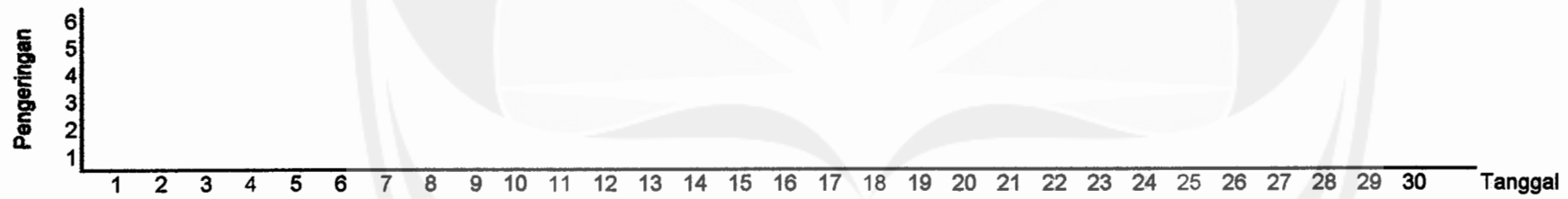
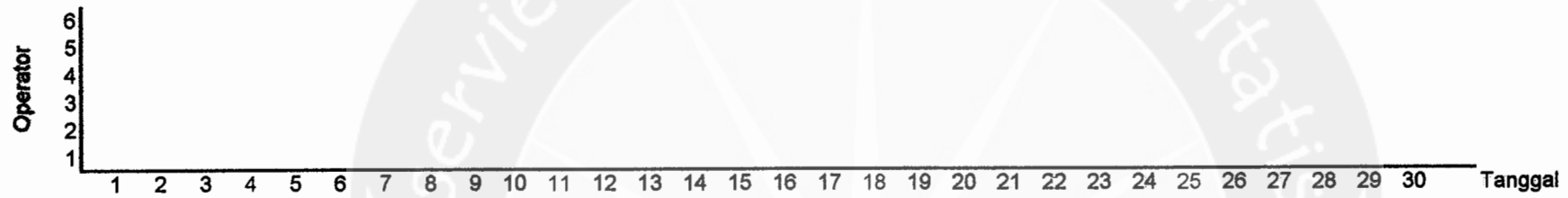


Jadwal Bulan Mei





Jadwal Bulan Juni



serviens in lumine veritatis

LAMPIRAN 3

Gambar Produk

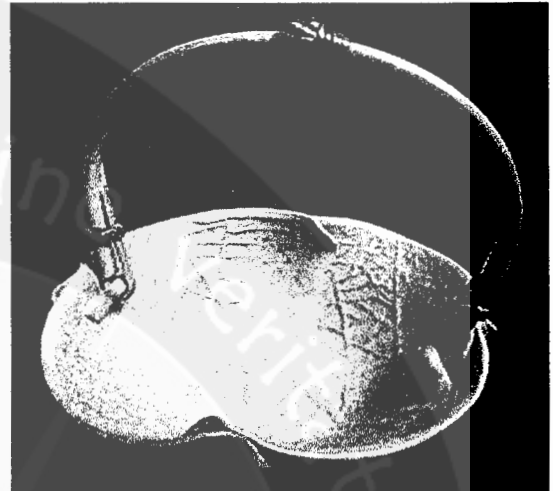
Spesifikasi Produk

Products

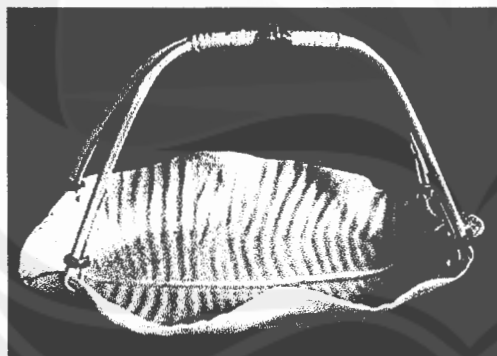
In Product section, you will find some of our original design ceramic products. Beside the product listed in our web site, we still have a very wide range variation of ceramic products. Please contact us if you would like to know more about our products.



Code : (38)MDW2R
Name : Waru Leaf Bowl 2 Rattan
Dimensions : 13.0 x 15.0 x 13.0 cm



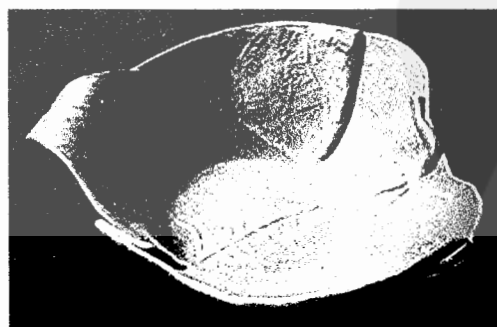
Code : (32)MKR
Name : Rattan Small Bowl
Dimensions : 14.0 x 15.0 x 15.0cm



Code : (16)PDP3R
Name : Banana Leaf Plate 3 Rattan
Dimensions : 31.0 x 19.0 x 18.0 cm



Code : (21)T1D
Name : Takir 1 Censer
Dimensions : 9.5 x 4.0 x 10.0 cm



Code : (41)MDW4
Name : Waru Leaf Bowl 4
Dimensions : 31.0 x 19.0 x 18.0 cm



Code : (43)2ADB
Name : Double Leaf Bowl
Dimensions : 18.0 x 4.5 x 11.0 cm

Products

We are the true inventor of all natural ceramics design we created. Although they are other companies which produce similar products with similar design, we assure you that our products are superior in quality and durability.



Code : (82)TP2DWR
Name : Waru Leaf 2 Oil Burner
Dimensions : 9.0 x 1.5 x 9.0 cm



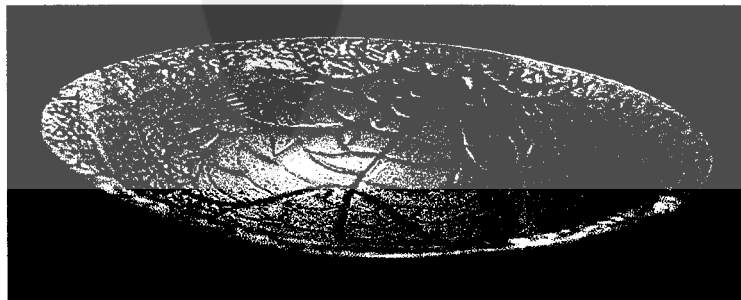
Code : (80)TPDP
Name : Banana Leaf Oil burner
Dimensions : 9.0 x 10.0 x 8.5 cm



Code: (76) GD
Name: Leaf Cup
Dimensions: 11.0 x 9.0 x 7.0 cm



Code: (81) TP3DW
Name: Waru Leaf 3 Oil Burner
Dimensions: 10.0 x 11.5 x 10.0 cm



Code: (36)MDW
Name: Waru Leaf Bowl
Dimensions: 13.0 x 5.0 x 13.0 cm

No	Code	Retail Price (Rp.)	Size (cm.)			
			Ø	L	W	H
1	LMPTX 1	150.000	15			31
2	LMPTX 2	150.000	13			31
3	LMPTX 3	150.000	16			32
4	LMPTX 4	150.000		16	15	31
5	LMPTX 5	150.000		15	15	32
6	LMPTX 6	150.000	16			32
7	LMPTX 7	150.000	16			32
8	LMPTX 8	150.000	16			32
9	LMPTX 9	150.000	16			32
10	LMPTX 10	150.000		14	14	32
11	LMPTX 11	150.000		14	14	32
12	LMPTX 12	150.000		14	14	32
13	LMPTX 13	150.000	16			32
14	LMPKP 1	150.000		14	14	32
15	LMPKP 2	150.000		22	11	32
16	LMPKP 3	150.000		14	14	32
17	LMP BG 1	150.000		14	14	32
18	VDBB 1 LMP	175.000		22	18.5	36
19	VDBB 2 LMP	200.000				
20	VD BB 1	140.000		22	18.5	36
21	VD BB 2	175.000				
22	VD BB 3	225.000		24	20	63
23	VD 2 BB 1	140.000		30	20	36
24	VD 2 BB 2	175.000		31	26	52
25	VD 2 BB 3	225.000		34	29	62
26	VD 3BB 1 LMP	200.000		32	32	36
27	VD 3BB 2 LMP	300.000				
28	VD 3 BB 1	200.000		32	32	36
29	VD 3 BB 2	275.000		34	34	52
30	VD 3 BB 3	350.000		34	34	62
31						
32						
33						
34						
35						
36	2 PDPK	17.500		12	14	2
37	2 ADB	17.500		19	12	5
38	2 MDW 2	40.000		29	15	5
39	2 MDW 3 R	75.000		41	21	7
40	2 MDW 4 R	100.000		46	23	7
41	AT 1- 19	25.000	10			10
42	ADK	8.500		8	10	4
43	ADB	10.000		9	11	4
44	ARB	8.500	9.5			3
45	AKK	10.000		9	10	4
46	AKB	12.500		10	11	4
47	ADP	12.500		13	11	4
48	ADW	12.500	11			5
49	AB 1	17.500	12			4.5
50	CDDP	12.500	7.5			4
51	CDDW	12.500	7.5			4
52	CDP + LPK	27.500	8	10.5		5.5
53	CDW + LPK	27.500	8	10.5		5.5
54	CLPK 1	25.000		11.5	8.5	7.5
55	CLPK 2	30.000				
56	CNGKR 1	12.500		8	10	4.5
57	CNGKR 2	15.000		8	10.5	6.5
58	DD / DPD	7.500		9	8	3
59	D 1- 6	7.500	8-9			2-3
60	DFH 1- 5	10.000	8-9			2-3
61	GC	20.000	10	14	10	10
62	GCK	17.500				
63	GCL 1	20.000	8			9.5
64	GCL 2	25.000	8.5			11
65	GD 1	17.500	8			9.5
66	GD 2	25.000	8.5			11
67	GDP 1	17.500	8			9.5
68	GDP 2	25.000	8.5			11
69	JDW 1	30.000		16	13	2
70	JDW 3	50.000		23	24	2
71	JK 1	30.000		14.5	14.5	2
72	JK 1 Batk	32.500		14.5	14.5	2

No	Code	Retail Price (Rp.)	Size (cm.)			
			Ø	L	W	H
73	JK 2	40.000		20	20	2
74	JK 2 Btk	42.500		20	20	2
75	JK 3	50.000		22	22	2
76	JK 3 Btk	52.500		22	22	2
77	JK 4	90.000		28	28	3.5
78	JK 4 Btk	95.000		28	28	3.5
79	JPL 3	65.000	27			3.5
80	JPL3 Btk	70.000	27			3.5
81	JPL4	90.000	32			5
82	JPL4 Btk	95.000	32			5
83	JPBL	110.000	33			5
84	JPBL Btk	115.000	33			5
85	KD	8.500		13	8.5	2
86	KS 2	9.500	8			6.5
87	KSDP	9.500	7			7
88	LDPS	15.000	12			2
89	LDPK	15.000	14			2.5
90	LDPK Btk	17.500	14			2.5
91	LDPB	17.500	17.5			2.5
92	LDPB Btk	20.000	17.5			2.5
93	LMP 1- 6	15.000	8- 11			5.5
94	MKK D	15.000				
95	MKT	25.000				
96	MK	20.000	16			6
97	MK Btk	22.500	16			6
98	MKR	22.500	16			6
99	MT 1	30.000	20			8
100	MT 1 Btk	35.000	20			8
101	MT 2	40.000	22			8
102	MT 2 Btk	45.000	22			8
103	MB	80.000	28			8.5
104	MB Btk	85.000	28			8.5
105	MBT	140.000	36			11
106	MBT Btk	145.000	36			11
107	MBB	180.000	38			13
108	MBB Btk	185.000	38			13
109	MDW	20.000	14			4.5
110	MDP	20.000	14			4.5
111	MDW 2	20.000		14	13	5
112	MDW 2 R	22.500		14	13	5
113	MDW 3	33.500		23	22	7
114	MDW 4	45.000		24	22	7.5
115	MDW 5	80.000		29	27	10
116	MDWP 1	17.500		21	11	3
117	MDWP 2	20.000		25	13	3
118	MDWP 2R	25.000		25	13	3
119	MDWP 3	33.500		30	18	4
120	MDWP 3R	37.500		30	18	4
121	MDWP 4	50.000		35	24	5.5
122	MDWP 4R	55.000		35	24	5.5
123	MDWP 6	85.000		40	31	7
124	MLKK	12.500	11			3
125	MLS DP	12.500		14	12	2
126	MLR	12.500	11			3
127	PDP 1	15.000		17	11	3
128	PDP 2	20.000		23	15	3
129	PDP 2 R	25.000		23	15	3
130	PDP 3	33.500		30	17	4.5
131	PDP 3 R	37.500		30	17	4.5
132	PDP 4	50.000		38	22	5
133	PDP 4 R	55.000		38	22	5
134	PDP 6	80.000		40	31	7
135	PDPK 1	17.500		19	12	3
136	PDPK 2	22.500		25	12	3
137	PDW 1	15.000		14	15	2
138	PDW 2	20.000		16	18	2
139	PDW 3	33.500		24	24	25
140	PDW 4	50.000				
141	PLK	30.000	19			2
142	PLK Batik	33.500	19			2
143	PL 1	35.000	23			2.5
144	PL 1 Btk	37.500	23			2.5

No	Code	Retail Price (Rp.)	Size (cm.)			
			Ø	L	W	H
145	PL 2	37.500	24			3
146	PL 2 Btk	40.000	24			3
147	PL 3	50.000	27			3.5
148	PL 3 Btk	52.500	27			3.5
149	PL 4	80.000	32			5
150	PL 4 Btk	85.000	32			5
151	PBL	85.000	33			5
152	PBL Btk	90.000	33			5
153	PK 1	25.000		26	14	3
154	PK 1 R	30.000		26	14	3
155	PK 1 Btk	30.000		26	14	3
156	PK 1 R Btk	33.500		26	14	3
157	PK 2	33.500		25	20	4
158	PK 2 R	37.500		25	20	4
159	PK 2 Btk	37.500		25	20	4
160	PK 2 R Btk	40.000		25	20	4
161	PKN 1 Btk	20.000		14	14	2
162	PKN 2 Btk	25.000		16.5	16.5	2
163	PKN 3 Btk	30.000		20	20	2.5
164	PKS Btk	17.500		11.5	11.5	2.5
165	PKS 1 Btk	25.000		14	11	2.5
166	PKS 2 Btk	30.000		17	12.5	2.5
167	PKT 1 Btk	33.500		21.5	17	3
168	PKT 2 Btk	37.500		29	18	3.5
169	PLD	7.500		12	6.5	2.5
170	SD 1 D	10.000	10			4
171	SD 2	12.500	14			5
172	T 1 / T 1 D	10.000		10	9	4.5
173	T 2	12.500		13	11	5
174	T 3	20.000		15	15	7
175	T 4	30.000	22			6
176	T 5	40.000	25			7
177	TKP 1	15.000		18	9.5	4
178	TKP 1 R	17.500		18	9.5	4
179	TKP 2	25.000		26	11	4.5
180	TKP 3	30.000				
181	TLRDP / DW	15.000	10			9.5
182	TLTDP / DW	17.500	10			11
183	TS 1	15.000		15	10	2.5
184	TS 1 Btk	17.500		15	10	2.5
185	TS 2	17.500		15	13.5	2.5
186	TSDP	15.000		17	8.5	2
187	TSO B	15.000		12	10	2
188	TSO B Btk	17.500		12	10	2
189	TCRW 1	25.000				
190	TCRW 2	30.000	10			9
191	TGLW 1	25.000				
192	TGLW 2	30.000	10			9
193	TKN	10.000				
194	TSD	10.000				

No	Code	Retail Price (Rp.)	Size (cm.)			
			Ø	L	W	H
195	TP 1	20.000				
196	TP 2	20.000				
197	TP 3	20.000				
198	TPB	20.000		10	10	11
199	TPBDP/ DW	20.000		10	10	11
200	TP Batik	20.000	9.5			8.5
201	TPT	20.000	9.5			10
202	TP Kamboja	20.000				
203	TPDP	17.000	9	10	9	8.5
204	TPDP 2	17.000	8-9			8.5
205	TPDP 3	17.000	8-9			8.5
206	TPDP 4	17.000	8-9			8.5
207	TPDP 5	17.000	8-9			8.5
208	TPDP 6	17.000	8-9			8.5
209	TPDWR	17.000		9	8	11
300	TPDWR 2	17.000	8-9			10
301	TPDWR 3	17.000	8-9			10
302	TPDWR 4	17.000	8-9			10
303	TRTD	7.500	9.5			2.5
304	VDST 1	25.000	14			11
305	VDST 2	35.000				
306	VDST 3	50.000				
307	VDB 1	20.000		11	8	13
308	VDB 2	27.500	12			9
309	VD 2 K	15.000		11	6	11
310	VD 2 B	20.000		13	7	13
311	VD 2 BB	27.500		19.5	10.5	17
312	VD 3 K	20.000				
313	VD 3 B	27.500		16	16	13
314	VDD S	20.000		15	11	9
315	VDD B	27.500				
316	VD 4 B	45.000		18	18	19
317	VS 1 - 9	25.000	6-8			9-10
318						
319						
320						
321						
322						
323						
324						
325						
326						
327						
328						
329						
330						
331						
332						
333						
334						

- RETAIL PRICE :

Factory price / Wholesale price : 15 - 40% Off
(depending on value and quantity of orders request)

- PAYMENT :

We request a 50 % deposit of your total order to prepare and process your order.

We will inform you when your order is finished and ready to be shipped. Then we need you to complete the final payment. Payment could be paid via Bank Transfer to our account or cash.

- PRODUCT PACKING :

1. The items are individually wrapped in foam sheet or shredded paper then packed into a large cardboard or wooden box. (depending on request and the fragility of the item)

2. The items are individually wrapped in foam sheet then packed into a small inner cardboard box in group or set.

And then packed again into a large master box. (depending on request and the fragility of the item)
Silica Gel sachets are added to all packed products. All packed boxes are numbered and contents listed and correlate to the packing list and shipping invoice for your easy reference once you receive the shipment

- SAVETY GLAZE CERTIFICATE :

From Balai Besar Keramik Indonesia. The certificate declares that our glaze is safe for contact with food in release of lead and cadmium, based on International Standard ISO : 6486/2.