

BAB VI

KESIMPULAN DAN SARAN

6.1 Kesimpulan

Setelah dilakukan estimasi dimensi dan perhitungan komponen struktur meliputi atap baja, pelat, tangga, balok, kolom, fondasi dan dinding penahan tanah maka dapat disimpulkan:

1. Tanah di lokasi perencanaan termasuk kelas situs SC dengan $S_{DS} = 0,717$ dan $S_{DI} = 0,343$ maka termasuk KDS D. Sistem struktur yang digunakan adalah sistem rangka pemikul momen khusus.
2. Atap baja menggunakan gording CNP 125 x 50 x 20 x 3,2 dan kuda-kuda WF 300 x 150 x 6,5 x 9.
3. Pelat atap dan pelat lantai dengan tebal 125 mm menggunakan tulangan tumpuan dan lapangan P12 – 100, serta tulangan susut P8 – 100.
4. Pelat tangga dan bordes direncanakan dengan ketebalan 130 mm dengan tulangan tumpuan dan lapangan P12 – 100, serta tulangan susut P8 – 150. Balok bordes berukuran 250 x 300 dengan tulangan tumpuan 3D13 dan lapangan 4D13.
5. Perhitungan balok terfokus pada portal E meliputi balok B1 (label B46 dan B47), serta portal 9 meliputi balok B2 (label B72 dan B73). Dimensi balok B1 yaitu 500 x 700 dengan tulangan tumpuan 7D25, lapangan 4D25, dan sengkang 3D13 – 150. Dimensi balok B2 yaitu 400 x 600 dengan tulangan tumpuan 4D19, lapangan 3D19, dan sengkang 2D13 – 100.

6. Perhitungan kolom dilakukan pada kolom pertemuan antara portal E dan portal 9 yaitu pada label C41. Dimensi kolom lantai 1 yaitu 800 x 900 dengan tulangan 16D25 dan sengkang 4D13 – 100.
7. Fondasi *borepile* menggunakan 6 tiang bor dengan diameter 80 cm dan panjang 16,5 m. Tulangan longitudinal fondasi menggunakan 12D25. Tulangan spiral sepanjang l_o menggunakan tulangan D13 – 100 dan diluar l_o menggunakan D13 – 150.
8. Kapasitas satu buah *borepile* untuk menahan gaya lateral sebesar 650,476 kN.
9. *Pile cap* menggunakan ukuran 6 x 4 m² dengan tebal 1 m. Tulangan lentur menggunakan D25 – 100 dan tulangan susut D22 – 150.
10. Dinding penahan tanah kantilever direncanakan untuk menahan tanah setinggi 4 m. Dimensi bagian atas 30 cm dan bagian bawah 60 cm dengan tulangan D22 – 400.

6.2 **Saran**

Saran yang dapat penulis berikan setelah mengerjakan tugas akhir ini:

1. Penggunaan *software* seperti ETABS sangat membantu proses analisis struktur.
2. Dalam perencanaan kudakuda sebaiknya memperhatikan tumpuan yang digunakan sehingga hasil yang diperoleh semakin mendekati kondisi nyatanya.
3. Banyak membaca jurnal dan buku-buku sangat membantu dalam pengerjaan tugas akhir ini.

DAFTAR PUSTAKA

- Badan Standarisasi Nasional., 2012, Tata Cara Perencanaan Ketahanan Gempa untuk Bangunan Gedung, SNI 1726:2012, Jakarta.
- Badan Standarisasi Nasional., 2013, Beban Minimum untuk Perancangan Bangunan Gedung dan Struktur Lain, SNI 1727:2013, Jakarta.
- Badan Standarisasi Nasional., 2013, Tata Cara Perencanaan Struktur Beton untuk Bangunan Gedung, SNI 2847:2013, Jakarta.
- Badan Standarisasi Nasional., 2015, Spesifikasi untuk Bangunan Gedung Baja Struktural, SNI 1729:2015, Jakarta.
- Bowles, Joseph E., 1999, Analisa dan Disain Pondasi Jilid 2, Erlangga, Jakarta.
- Budiono, B. dkk., 2017, Contoh Desain Bangunan Tahan Gempa dengan Sistem Rangka Pemikul Momen Khusus dan Sistem Dinding Struktur Khusus di Jakarta, ITB Press, Bandung.
- Dipohusodo, I., 1994, Struktur Beton Bertulang, Gramedia, Jakarta.
- Direktorat Jendral Departemen Pekerjaan Umum, 2013, Standar Perencanaan Irigasi-Kriteria Perencanaan 02, Badan Penerbit Departemen Pekerjaan Umum, Jakarta.
- Hardiyatmo, Hary C., 2018, Analisis dan Perancangan Fondasi I, Gadjah Mada University Press, Yogyakarta.
- Hardiyatmo, Hary C., 2018, Analisis dan Perancangan Fondasi II, Gadjah Mada University Press, Yogyakarta.
- McCormac, Jack C., 2002, Desain Beton Bertulang, Erlangga, Jakarta.
- Nawy, E. G., 1990, Beton Bertulang Suatu Pendekatan Dasar, PT. Eresco, Bandung
- Paz, M., 1990, Dinamika Struktur: Teori dan Perhitungan, Erlangga, Jakarta.



SOIL MECHANIC LABORATORY
CIVIL ENGINEERING PROGRAM
FACULTY OF ENGINEERING, UAJY
 44 BABARSARI STREET, YOGYAKARTA 55281
 Tel: +62-274-487711 ext. 1055
 Fax: +62-274-487748

Boring Number:

BH-1

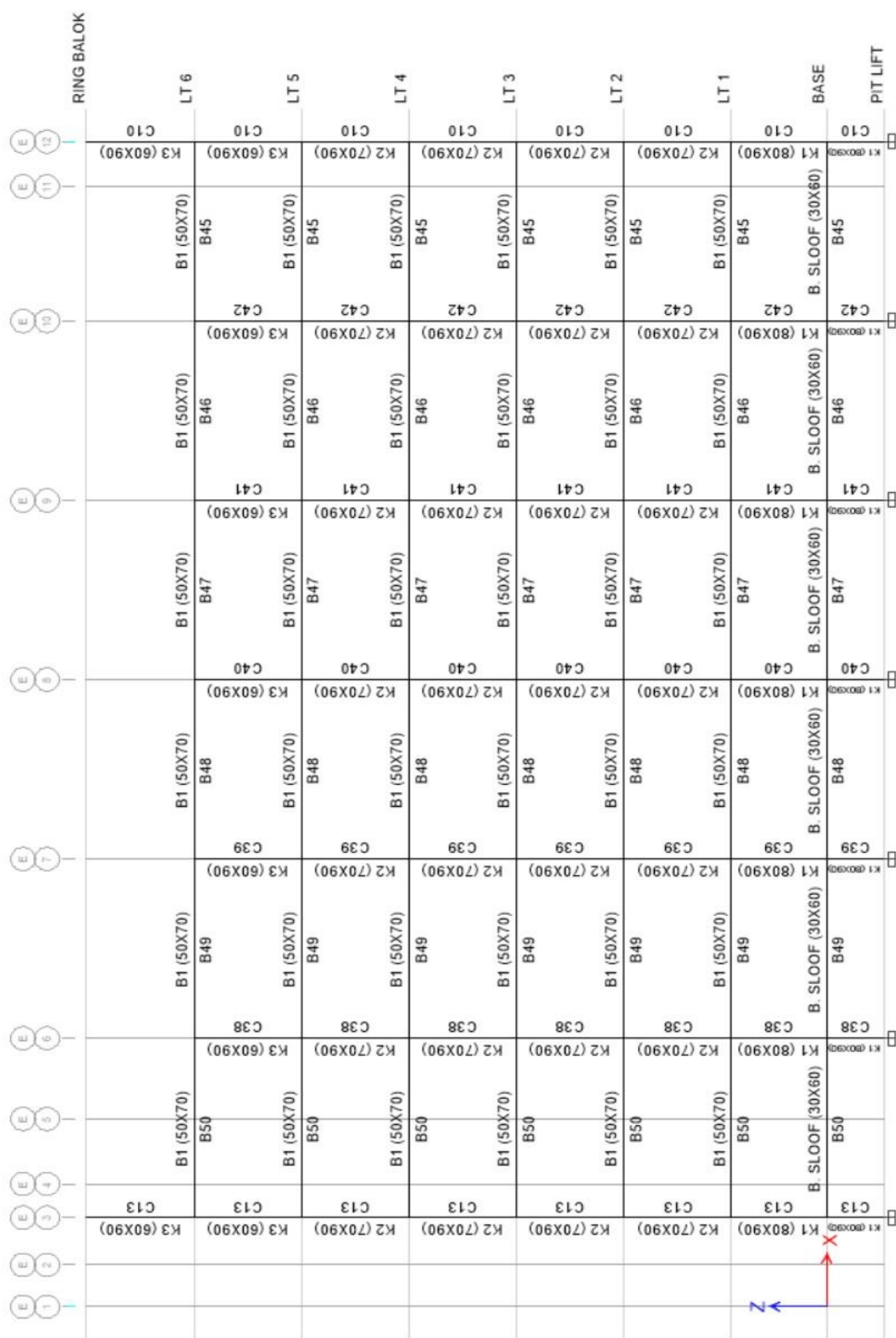
BOR LOG

CLIENT: YUSUF GOENAWAN	PROJECT TITLE : ACE Hardware
PROJECT CONTRACT NUMBER: 027/LMKT/FT.UAJY/11/2018	PROJECT LOCATION : Jl. Setiabudi, Semarang, Jawa Tengah
DATE STARTED: 21 Desember 2018	GROUND ELEVATION : + 1,50 m from road level
DATE COMPLETED : 21 Desember 2018	HOLE SIZE : 7.295cm
DRILLING CONTRACTOR: SOIL MECH. LAB. UAJY	GROUND WATER LEVEL : - 15,00 m from ground level
DRILLING METHOD: ROTARY SPINDLE, SKID MOUNTED TYPE	WEATHER CONDITION : FINE
LOGGED BY: RIYANTO, CS.	ESTIMATED SEASONAL HIGH :-
CHECKED BY: SOIL MECH. LAB, UAJY	

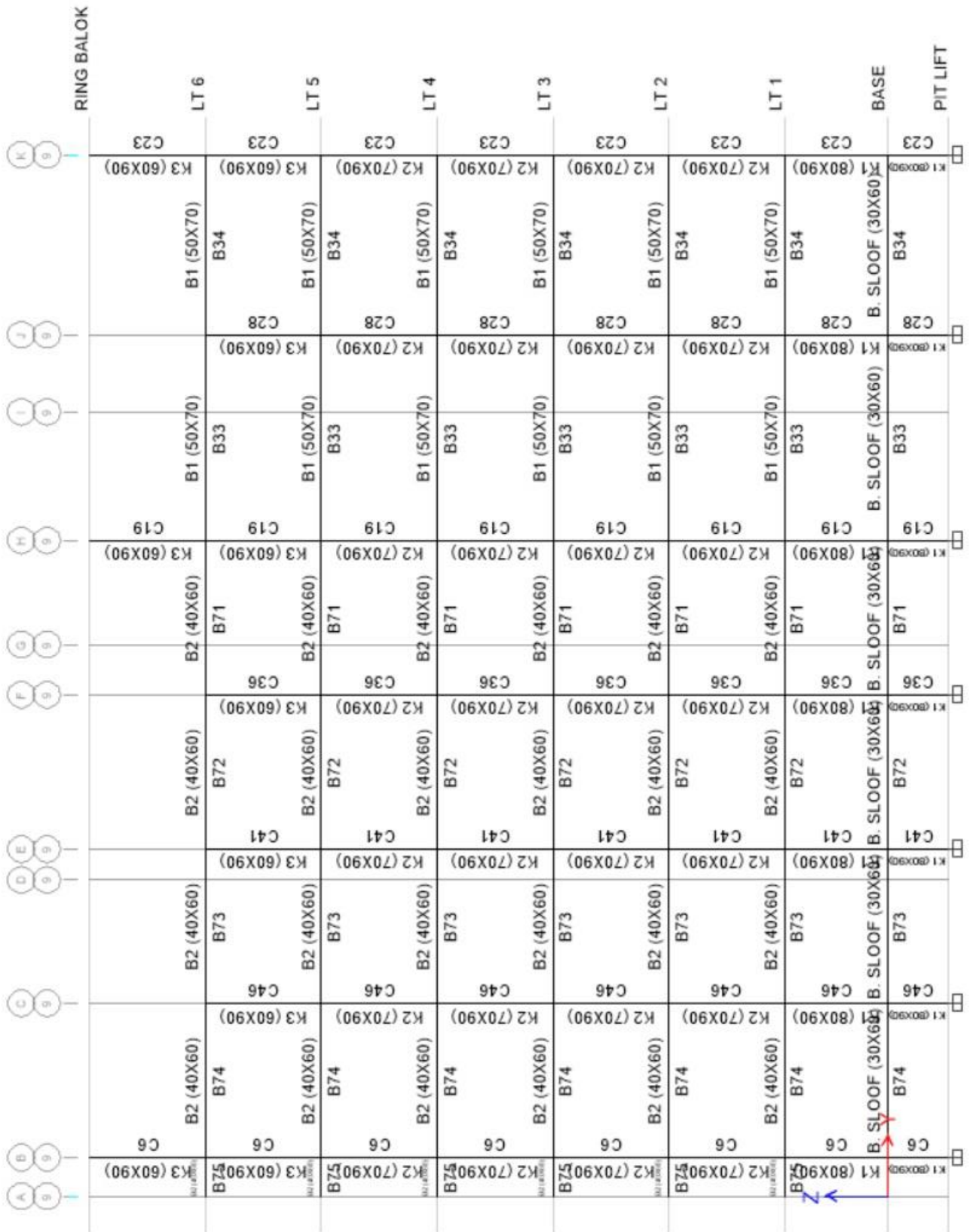
Depth (m)	Graph Log	Material Description (field observations)	Contact Depth (m)	Sample Number	Blow Counts (N Value)				Water Level Elevation (m)	SPT Value						
					N1	N2	N3	Nv		0	10	20	30	40	50	60
1		Pasir kasar (coklat)	18,5	I					-15,00	0						
2					8	12	22	34		1						
3										2						
4					12	19	30	49		3						
5										4						
6					12	21	30	51		5						
7										6						
8					14	22	30	52		7						
9										8						
10					14	21	31	52		9						
11										10						
12					14	23	31	54		11						
13										12						
14					16	24	31	55		13						
15										14						
16					16	23	32	55		15						
17					16											
18	17	24	33	57	17											
19					18											
20	17	24	35	59	19											
21					20											
22	19	23	37	60	21											
23					22											
24	19	25	35	60	23											
25					24											
26	18	24	36	60	25											
27					26											
28	19	26	34	60	27											
29					28											
30	19	25	35	60	29											
31					30											
32	20	27	33	60	31											
33					32											
34	20	23	37	60	33											
35					34											
36	22	25	35	60	35											
37					36											
38	22	25	35	60	37											
39					38											
40	22	28	32	60	39											
					40											

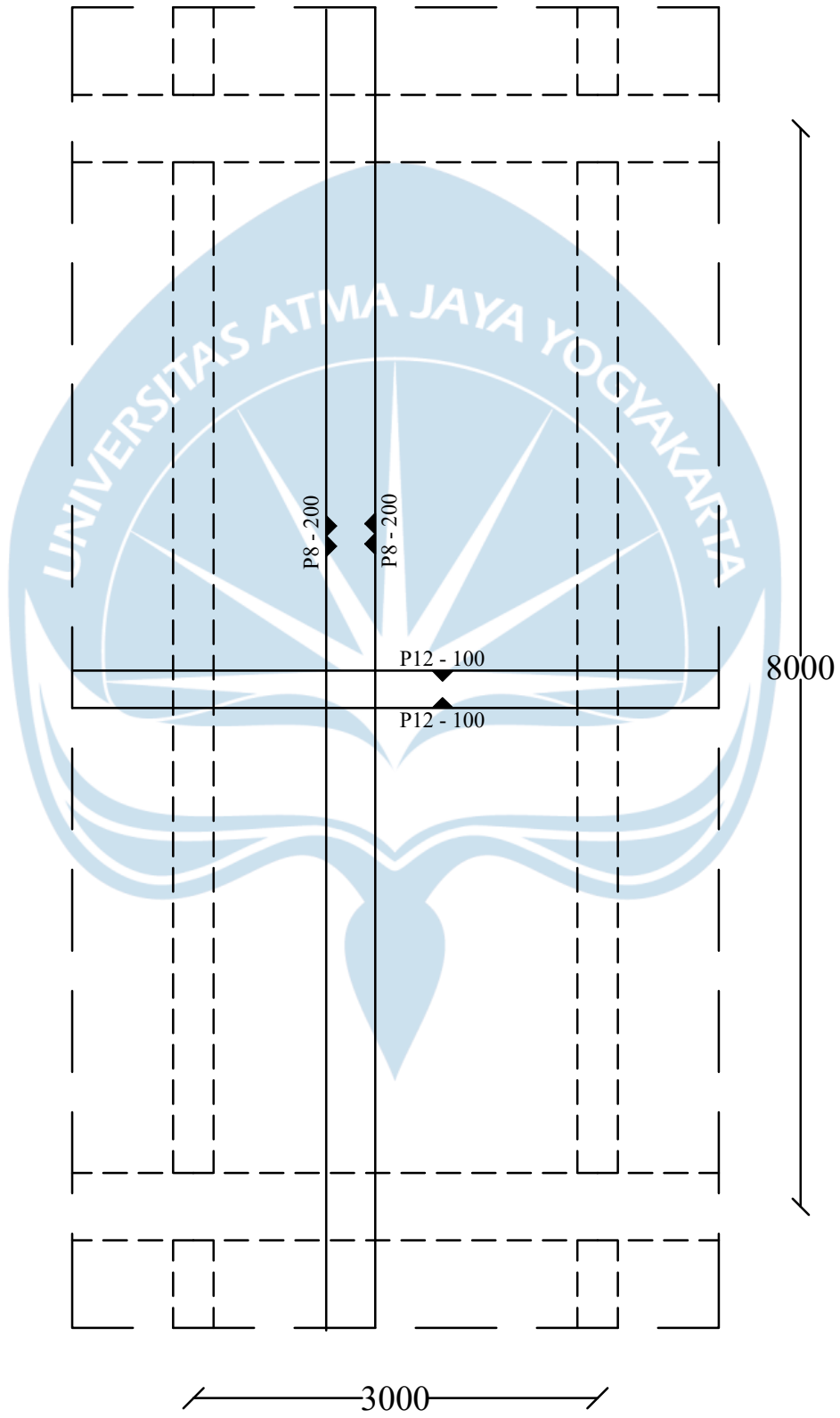
Catatan: Pada pengamatan di lapangan, lanau bisa tampak seperti pasir halus atau pasir sangat halus

PORTAL E



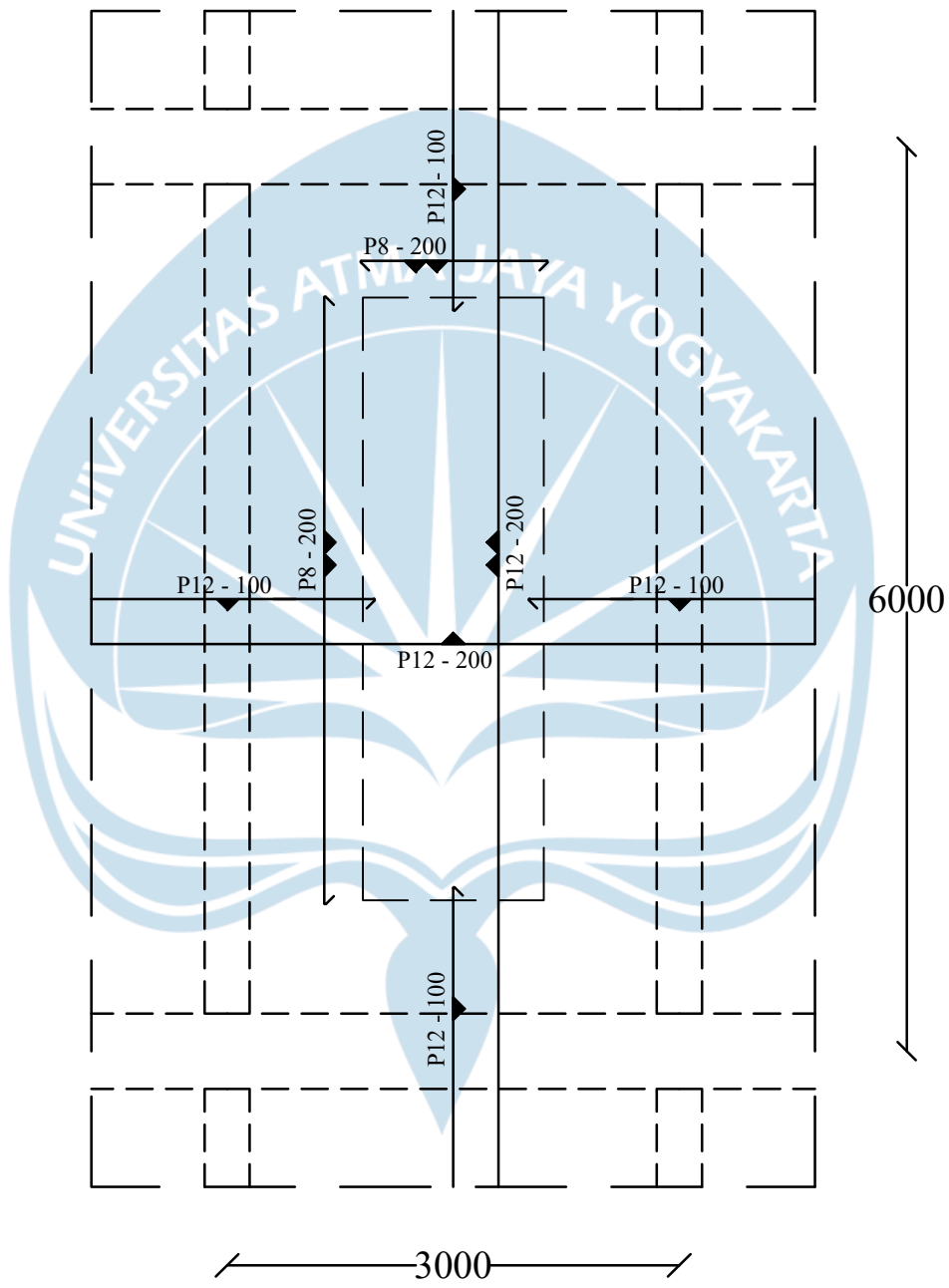
PORTAL 9



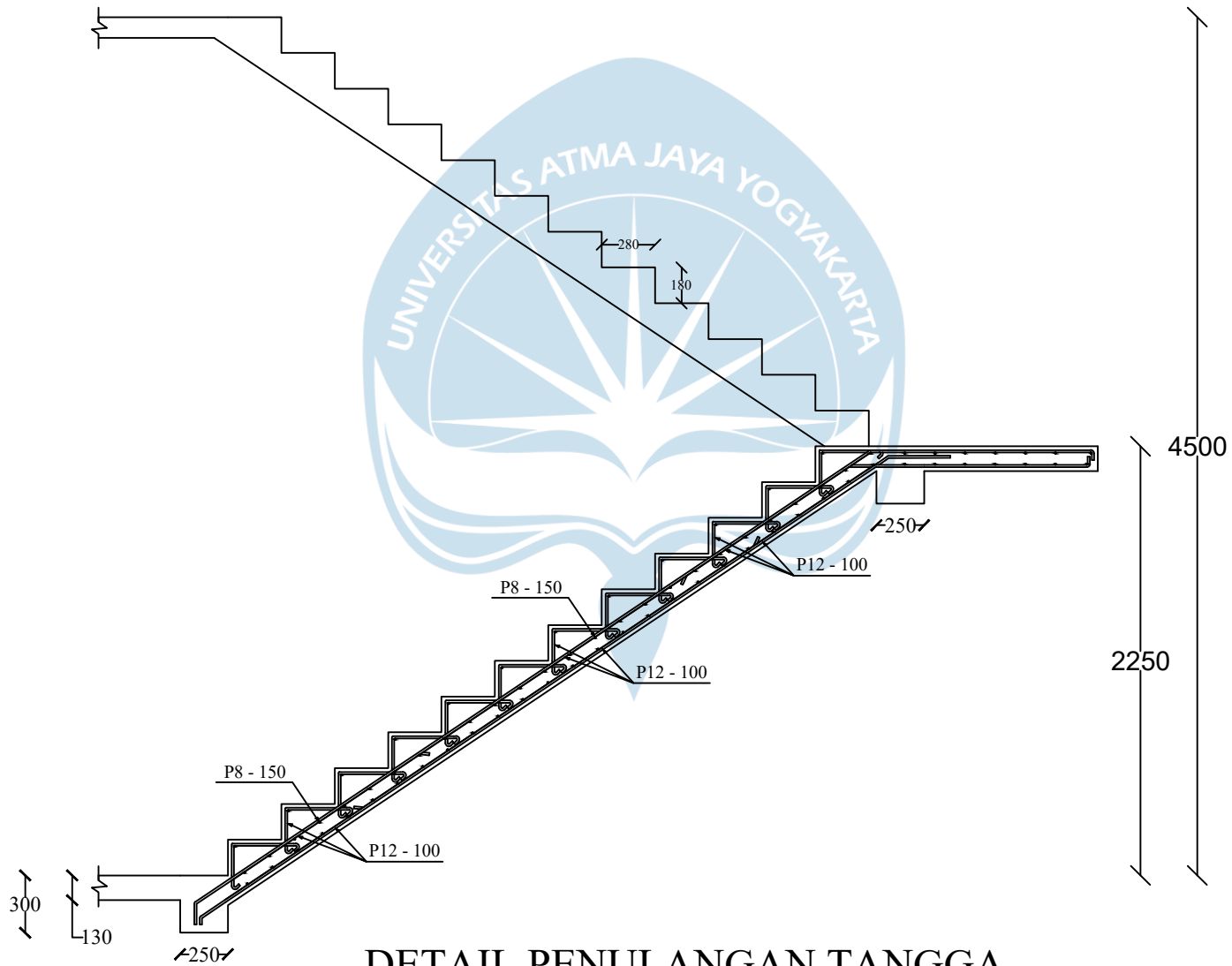


PELAT SATU ARAH (TIPE 2)

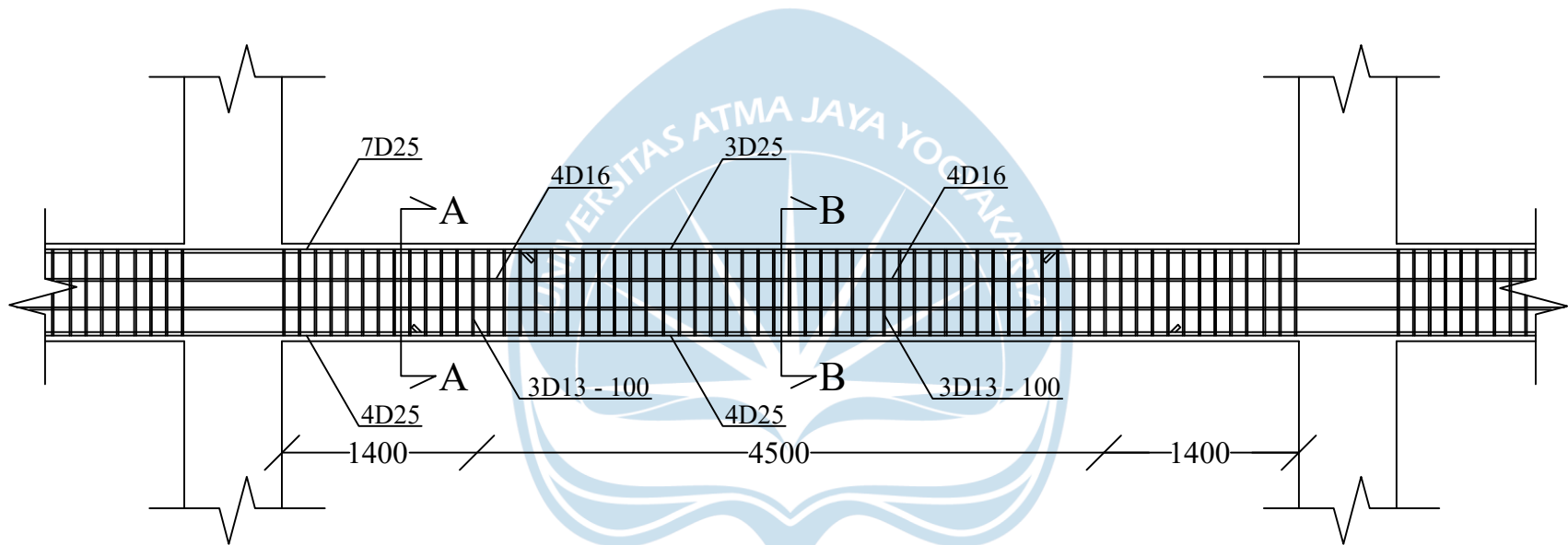
Skala: 1 : 50



PELAT DUA ARAH (TIPE 4)
 Skala: 1 : 50

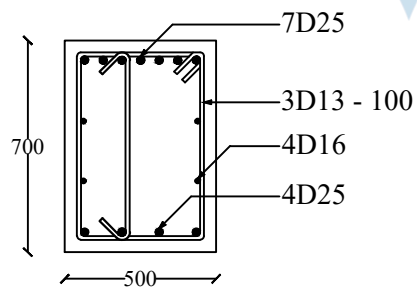


DETAIL PENULANGAN TANGGA
 Skala: 1 : 35



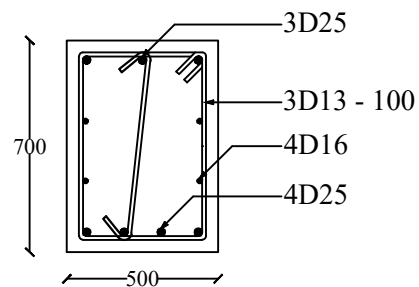
PENULANGAN BALOK B1 (500 X 700)

Skala: 1 : 50



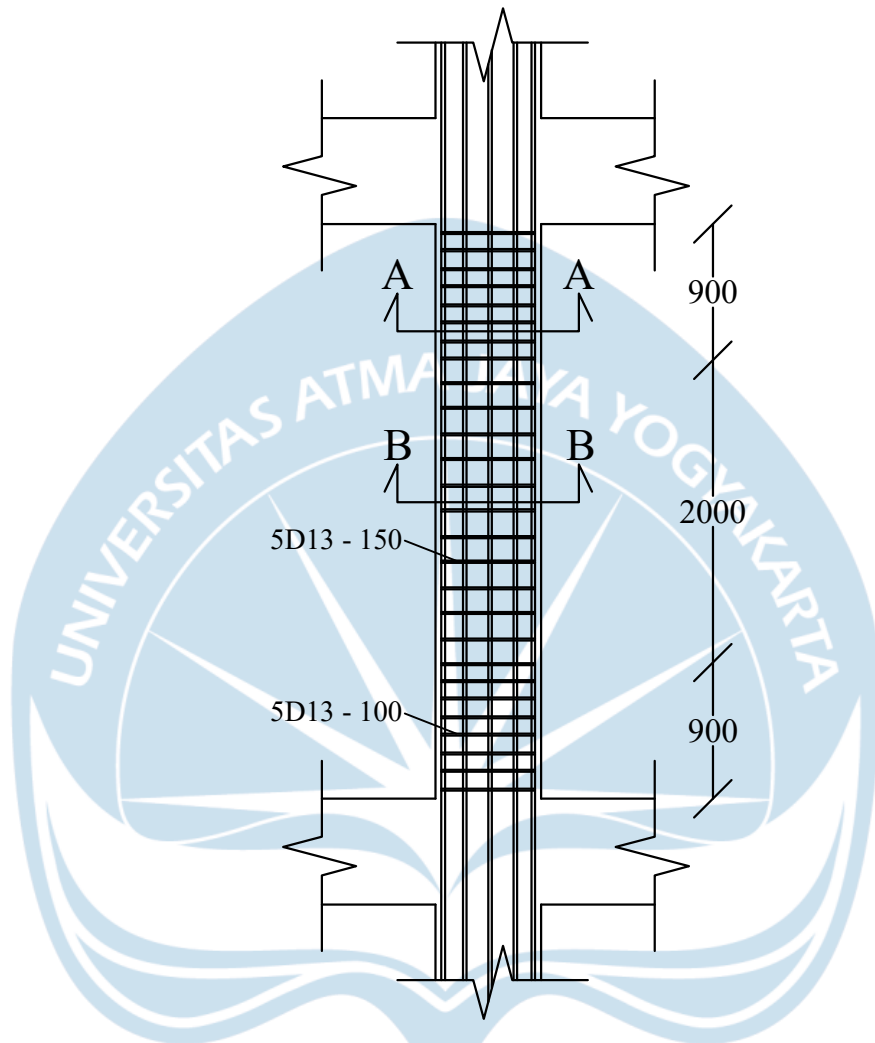
POTONGAN A - A

Skala: 1 : 25



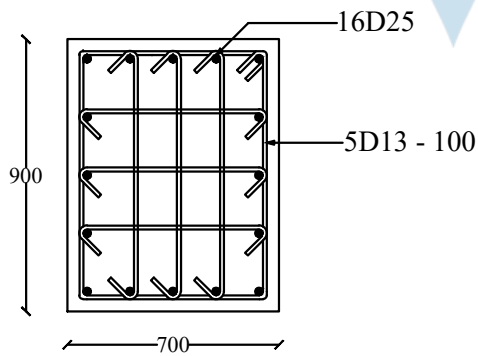
POTONGAN B - B

Skala: 1 : 25



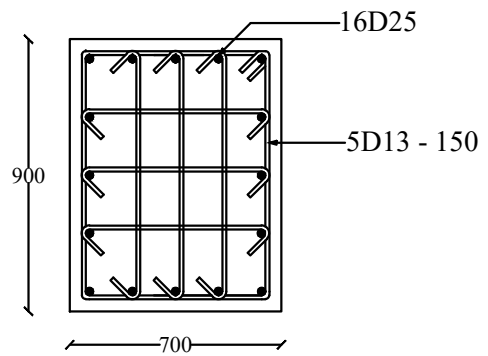
PENULANGAN KOLOM K2 (700 X 900)

Skala: 1 : 50



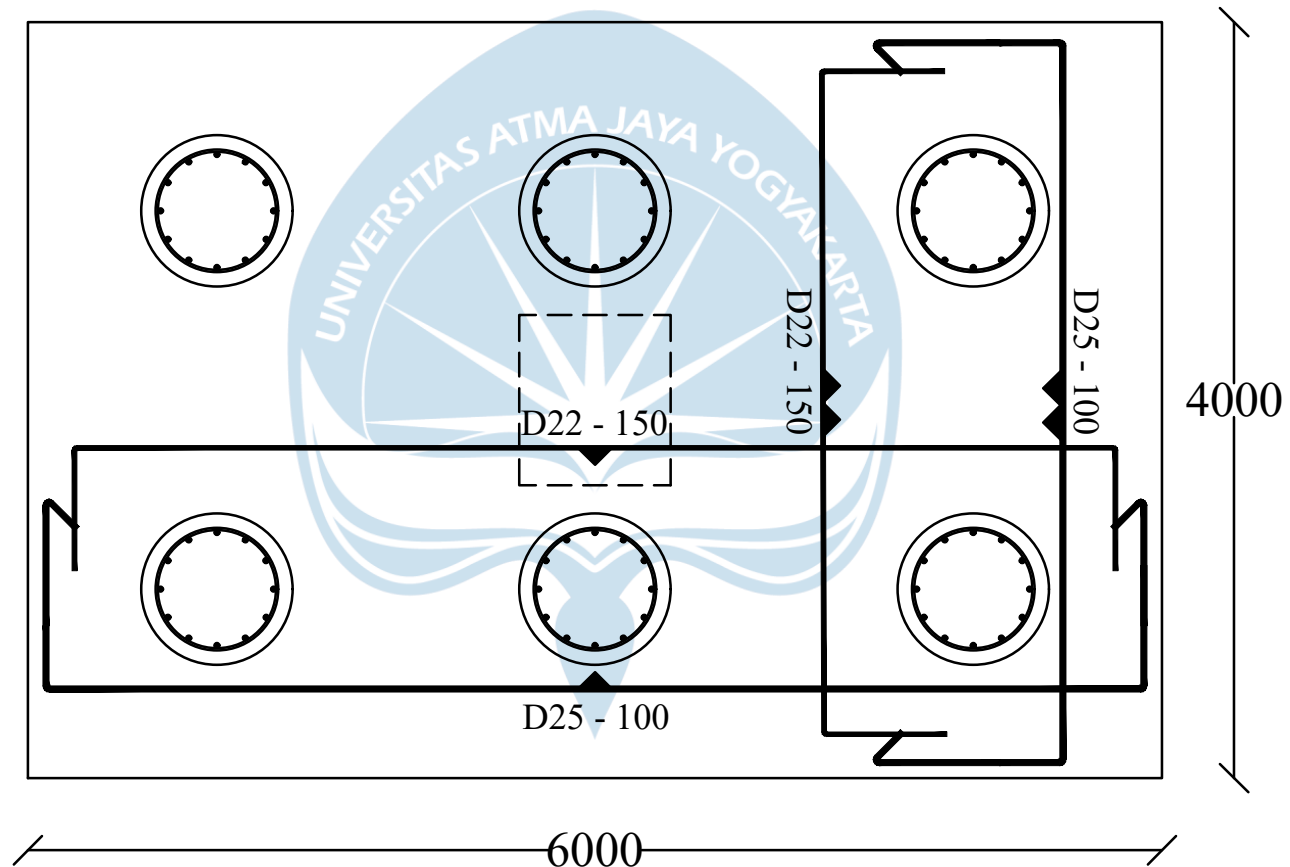
POTONGAN A - A

Skala: 1 : 25



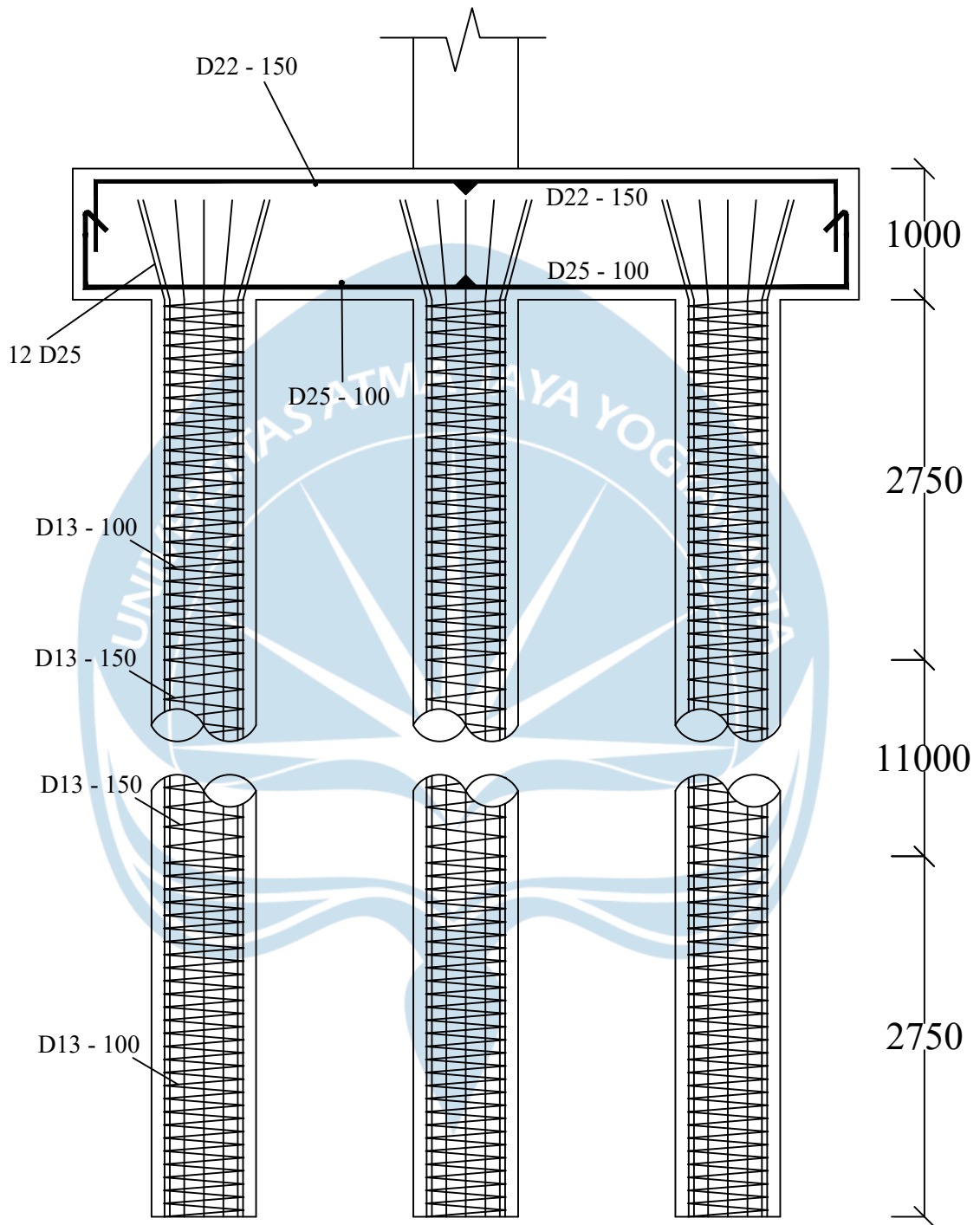
POTONGAN B - B

Skala: 1 : 25



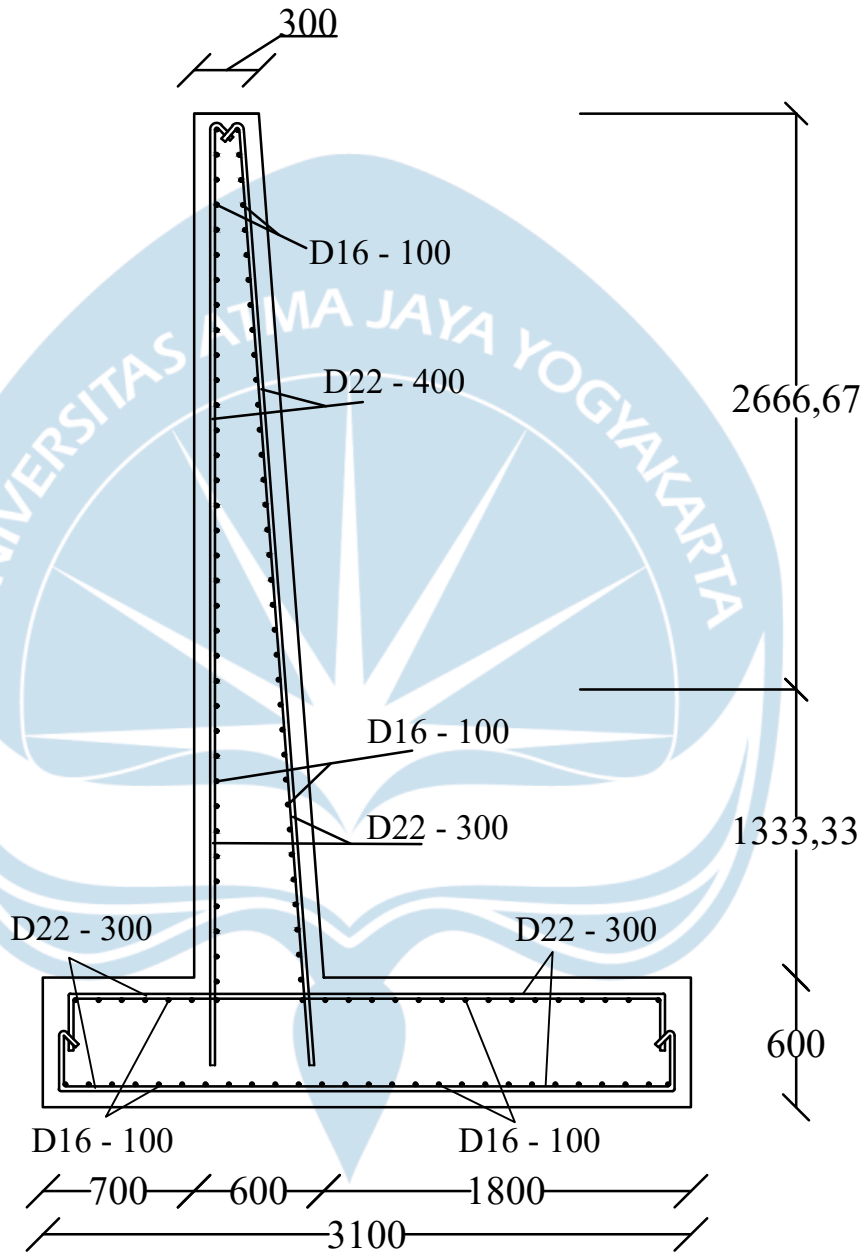
DETAIL PILE CAP

Skala: 1 : 40



PENULANGAN BOREPILE

Skala: 1 : 50



DETAIL DINDING PENAHAN TANAH

Skala: 1 : 35

TABLE: Beam Forces

Story	Beam	Unique Name	Load Case/Combo	Station	P	V2	V3	T	M2	M3
LT 6	B46	231	ENVELOPE Max	0,3	0	-195,5413	0	13,853	0	-254,5738
LT 6	B46	231	ENVELOPE Max	0,74	0	-187,4739	0	13,853	0	-170,2176
LT 6	B46	231	ENVELOPE Max	1,18	0	-176,8739	0	13,853	0	-89,9682
LT 6	B46	231	ENVELOPE Max	1,62	0	-165,5321	0	13,853	0	12,4954
LT 6	B46	231	ENVELOPE Max	2,06	0	-156,6589	0	13,853	0	148,5718
LT 6	B46	231	ENVELOPE Max	2,5	0	-150,3182	0	13,853	0	332,3153
LT 6	B46	231	ENVELOPE Max	2,5	0	-27,746	0	1,6625	0	334,2101
LT 6	B46	231	ENVELOPE Max	3	0	-20,7693	0	1,6625	0	366,7647
LT 6	B46	231	ENVELOPE Max	3,5	0	-6,0473	0	1,6625	0	390,6584
LT 6	B46	231	ENVELOPE Max	4	0	16,7472	0	1,6625	0	399,7017
LT 6	B46	231	ENVELOPE Max	4,5	0	45,1183	0	1,6625	0	389,7681
LT 6	B46	231	ENVELOPE Max	5	0	64,3591	0	1,6625	0	364,984
LT 6	B46	231	ENVELOPE Max	5,5	0	74,4697	0	1,6625	0	331,539
LT 6	B46	231	ENVELOPE Max	5,5	0	417,468	0	23,939	0	332,0708
LT 6	B46	231	ENVELOPE Max	5,94	0	426,6106	0	23,939	0	146,725
LT 6	B46	231	ENVELOPE Max	6,38	0	445,3398	0	23,939	0	9,2508
LT 6	B46	231	ENVELOPE Max	6,82	0	473,4127	0	23,939	0	-94,0497
LT 6	B46	231	ENVELOPE Max	7,26	0	498,678	0	23,939	0	-175,0237
LT 6	B46	231	ENVELOPE Max	7,7	0	514,3569	0	23,939	0	-260,1045
LT 6	B46	231	ENVELOPE Min	0,3	0	-510,7154	0	-23,4384	0	-675,7492
LT 6	B46	231	ENVELOPE Min	0,74	0	-495,0365	0	-23,4384	0	-454,1322
LT 6	B46	231	ENVELOPE Min	1,18	0	-469,7712	0	-23,4384	0	-241,523
LT 6	B46	231	ENVELOPE Min	1,62	0	-441,6983	0	-23,4384	0	-70,4331
LT 6	B46	231	ENVELOPE Min	2,06	0	-422,9691	0	-23,4384	0	56,07
LT 6	B46	231	ENVELOPE Min	2,5	0	-413,8265	0	-23,4384	0	123,5121
LT 6	B46	231	ENVELOPE Min	2,5	0	-72,6986	0	0,1854	0	123,7949
LT 6	B46	231	ENVELOPE Min	3	0	-62,5879	0	0,1854	0	137,7024
LT 6	B46	231	ENVELOPE Min	3,5	0	-43,3471	0	0,1854	0	147,0915
LT 6	B46	231	ENVELOPE Min	4	0	-15,3032	0	0,1854	0	150,3271
LT 6	B46	231	ENVELOPE Min	4,5	0	7,1642	0	0,1854	0	146,319
LT 6	B46	231	ENVELOPE Min	5	0	21,8862	0	0,1854	0	136,1573
LT 6	B46	231	ENVELOPE Min	5,5	0	28,8629	0	0,1854	0	121,4773
LT 6	B46	231	ENVELOPE Min	5,5	0	151,9651	0	-13,6281	0	121,6045
LT 6	B46	231	ENVELOPE Min	5,94	0	158,3058	0	-13,6281	0	53,4378
LT 6	B46	231	ENVELOPE Min	6,38	0	167,179	0	-13,6281	0	-72,9383
LT 6	B46	231	ENVELOPE Min	6,82	0	178,5207	0	-13,6281	0	-246,5743
LT 6	B46	231	ENVELOPE Min	7,26	0	189,1208	0	-13,6281	0	-460,7858
LT 6	B46	231	ENVELOPE Min	7,7	0	197,1882	0	-13,6281	0	-684,005
LT 6	B47	232	ENVELOPE Max	0,3	0	-201,0917	0	10,8898	0	-263,4121
LT 6	B47	232	ENVELOPE Max	0,74	0	-193,0243	0	10,8898	0	-176,6137
LT 6	B47	232	ENVELOPE Max	1,18	0	-182,4243	0	10,8898	0	-93,9222
LT 6	B47	232	ENVELOPE Max	1,62	0	-171,0825	0	10,8898	0	14,025
LT 6	B47	232	ENVELOPE Max	2,06	0	-162,2093	0	10,8898	0	155,5436
LT 6	B47	232	ENVELOPE Max	2,5	0	-155,8686	0	10,8898	0	344,1838
LT 6	B47	232	ENVELOPE Max	2,5	0	-27,6839	0	1,4088	0	338,9564
LT 6	B47	232	ENVELOPE Max	3	0	-20,7073	0	1,4088	0	371,7354
LT 6	B47	232	ENVELOPE Max	3,5	0	-5,9852	0	1,4088	0	395,8535
LT 6	B47	232	ENVELOPE Max	4	0	16,4822	0	1,4088	0	405,1211
LT 6	B47	232	ENVELOPE Max	4,5	0	44,6024	0	1,4088	0	395,4118
LT 6	B47	232	ENVELOPE Max	5	0	63,8433	0	1,4088	0	370,8521
LT 6	B47	232	ENVELOPE Max	5,5	0	73,9539	0	1,4088	0	337,6315
LT 6	B47	232	ENVELOPE Max	5,5	0	425,2631	0	27,0298	0	344,4446
LT 6	B47	232	ENVELOPE Max	5,94	0	434,4058	0	27,0298	0	155,669
LT 6	B47	232	ENVELOPE Max	6,38	0	453,1349	0	27,0298	0	14,0564
LT 6	B47	232	ENVELOPE Max	6,82	0	481,2078	0	27,0298	0	-89,5872
LT 6	B47	232	ENVELOPE Max	7,26	0	506,4732	0	27,0298	0	-171,4592
LT 6	B47	232	ENVELOPE Max	7,7	0	522,152	0	27,0298	0	-257,438
LT 6	B47	232	ENVELOPE Min	0,3	0	-521,8442	0	-26,9308	0	-688,3639
LT 6	B47	232	ENVELOPE Min	0,74	0	-506,1653	0	-26,9308	0	-461,8504
LT 6	B47	232	ENVELOPE Min	1,18	0	-480,8999	0	-26,9308	0	-244,3445
LT 6	B47	232	ENVELOPE Min	1,62	0	-452,827	0	-26,9308	0	-70,0166
LT 6	B47	232	ENVELOPE Min	2,06	0	-434,0979	0	-26,9308	0	57,0004
LT 6	B47	232	ENVELOPE Min	2,5	0	-424,9552	0	-26,9308	0	126,8846
LT 6	B47	232	ENVELOPE Min	2,5	0	-73,9064	0	0,199	0	124,9994

LT 6	B47	232 ENVELOPE Min	3	0	-63,7958	0	0,199	0	139,5893
LT 6	B47	232 ENVELOPE Min	3,5	0	-44,555	0	0,199	0	149,6608
LT 6	B47	232 ENVELOPE Min	4	0	-16,184	0	0,199	0	153,5788
LT 6	B47	232 ENVELOPE Min	4,5	0	6,5343	0	0,199	0	150,253
LT 6	B47	232 ENVELOPE Min	5	0	21,2563	0	0,199	0	140,7738
LT 6	B47	232 ENVELOPE Min	5,5	0	28,2329	0	0,199	0	126,7761
LT 6	B47	232 ENVELOPE Min	5,5	0	154,0059	0	-10,656	0	128,7608
LT 6	B47	232 ENVELOPE Min	5,94	0	160,3466	0	-10,656	0	59,6961
LT 6	B47	232 ENVELOPE Min	6,38	0	169,2198	0	-10,656	0	-68,5541
LT 6	B47	232 ENVELOPE Min	6,82	0	180,5616	0	-10,656	0	-244,4901
LT 6	B47	232 ENVELOPE Min	7,26	0	191,1616	0	-10,656	0	-462,1314
LT 6	B47	232 ENVELOPE Min	7,7	0	199,229	0	-10,656	0	-688,7804
LT 5	B46	329 ENVELOPE Max	0,35	0	-193,6144	0	21,597	0	-244,4063
LT 5	B46	329 ENVELOPE Max	0,78	0	-185,4772	0	21,597	0	-162,815
LT 5	B46	329 ENVELOPE Max	1,21	0	-174,9212	0	21,597	0	-53,8662
LT 5	B46	329 ENVELOPE Max	1,64	0	-163,9362	0	21,597	0	53,9141
LT 5	B46	329 ENVELOPE Max	2,07	0	-155,3489	0	21,597	0	179,3704
LT 5	B46	329 ENVELOPE Max	2,5	0	-149,1805	0	21,597	0	329,1343
LT 5	B46	329 ENVELOPE Max	2,5	0	-13,2627	0	2,2247	0	331,1657
LT 5	B46	329 ENVELOPE Max	3	0	-6,2861	0	2,2247	0	364,9349
LT 5	B46	329 ENVELOPE Max	3,5	0	8,4359	0	2,2247	0	390,0431
LT 5	B46	329 ENVELOPE Max	4	0	30,9034	0	2,2247	0	400,3009
LT 5	B46	329 ENVELOPE Max	4,5	0	59,036	0	2,2247	0	391,5818
LT 5	B46	329 ENVELOPE Max	5	0	78,2768	0	2,2247	0	368,0123
LT 5	B46	329 ENVELOPE Max	5,5	0	88,3874	0	2,2247	0	335,7819
LT 5	B46	329 ENVELOPE Max	5,5	0	412,2758	0	37,6264	0	336,4933
LT 5	B46	329 ENVELOPE Max	5,93	0	421,1042	0	37,6264	0	185,0434
LT 5	B46	329 ENVELOPE Max	6,36	0	439,0883	0	37,6264	0	58,4196
LT 5	B46	329 ENVELOPE Max	6,79	0	466,1488	0	37,6264	0	-49,5116
LT 5	B46	329 ENVELOPE Max	7,22	0	491,5851	0	37,6264	0	-159,7335
LT 5	B46	329 ENVELOPE Max	7,65	0	507,8658	0	37,6264	0	-241,0976
LT 5	B46	329 ENVELOPE Min	0,35	0	-507,2845	0	-38,5187	0	-648,8425
LT 5	B46	329 ENVELOPE Min	0,78	0	-491,0038	0	-38,5187	0	-443,0177
LT 5	B46	329 ENVELOPE Min	1,21	0	-465,5674	0	-38,5187	0	-267,5308
LT 5	B46	329 ENVELOPE Min	1,64	0	-438,5069	0	-38,5187	0	-101,5433
LT 5	B46	329 ENVELOPE Min	2,07	0	-420,5229	0	-38,5187	0	32,8372
LT 5	B46	329 ENVELOPE Min	2,5	0	-411,6944	0	-38,5187	0	121,476
LT 5	B46	329 ENVELOPE Min	2,5	0	-90,7906	0	0,3495	0	122,0548
LT 5	B46	329 ENVELOPE Min	3	0	-80,6799	0	0,3495	0	136,6301
LT 5	B46	329 ENVELOPE Min	3,5	0	-61,4391	0	0,3495	0	146,687
LT 5	B46	329 ENVELOPE Min	4	0	-33,0681	0	0,3495	0	150,5904
LT 5	B46	329 ENVELOPE Min	4,5	0	-10,3622	0	0,3495	0	147,2501
LT 5	B46	329 ENVELOPE Min	5	0	4,3598	0	0,3495	0	137,7563
LT 5	B46	329 ENVELOPE Min	5,5	0	11,3364	0	0,3495	0	123,7441
LT 5	B46	329 ENVELOPE Min	5,5	0	148,652	0	-22,8717	0	123,6483
LT 5	B46	329 ENVELOPE Min	5,93	0	154,8204	0	-22,8717	0	37,0789
LT 5	B46	329 ENVELOPE Min	6,36	0	163,4076	0	-22,8717	0	-96,3492
LT 5	B46	329 ENVELOPE Min	6,79	0	174,3926	0	-22,8717	0	-262,4008
LT 5	B46	329 ENVELOPE Min	7,22	0	184,9486	0	-22,8717	0	-437,9521
LT 5	B46	329 ENVELOPE Min	7,65	0	193,0858	0	-22,8717	0	-642,7334
LT 5	B47	330 ENVELOPE Max	0,35	0	-197,0257	0	19,5464	0	-246,0923
LT 5	B47	330 ENVELOPE Max	0,78	0	-188,8885	0	19,5464	0	-163,034
LT 5	B47	330 ENVELOPE Max	1,21	0	-178,3325	0	19,5464	0	-52,1657
LT 5	B47	330 ENVELOPE Max	1,64	0	-167,3475	0	19,5464	0	58,0197
LT 5	B47	330 ENVELOPE Max	2,07	0	-158,7603	0	19,5464	0	187,682
LT 5	B47	330 ENVELOPE Max	2,5	0	-152,5919	0	19,5464	0	343,5182
LT 5	B47	330 ENVELOPE Max	2,5	0	-11,8012	0	2,7409	0	338,9113
LT 5	B47	330 ENVELOPE Max	3	0	-4,8246	0	2,7409	0	371,4031
LT 5	B47	330 ENVELOPE Max	3,5	0	9,8974	0	2,7409	0	395,2341
LT 5	B47	330 ENVELOPE Max	4	0	32,3799	0	2,7409	0	404,2145
LT 5	B47	330 ENVELOPE Max	4,5	0	60,7509	0	2,7409	0	394,2181
LT 5	B47	330 ENVELOPE Max	5	0	79,9917	0	2,7409	0	369,3712
LT 5	B47	330 ENVELOPE Max	5,5	0	90,1024	0	2,7409	0	335,8635
LT 5	B47	330 ENVELOPE Max	5,5	0	424,8518	0	40,2296	0	342,9496
LT 5	B47	330 ENVELOPE Max	5,93	0	433,6802	0	40,2296	0	186,2061
LT 5	B47	330 ENVELOPE Max	6,36	0	451,6643	0	40,2296	0	55,2586

LT 5	B47	330 ENVELOPE Max	6,79	0	478,7248	0	40,2296	0	-56,1135
LT 5	B47	330 ENVELOPE Max	7,22	0	504,1611	0	40,2296	0	-163,8894
LT 5	B47	330 ENVELOPE Max	7,65	0	520,4418	0	40,2296	0	-247,2848
LT 5	B47	330 ENVELOPE Min	0,35	0	-516,0469	0	-41,3976	0	-653,2978
LT 5	B47	330 ENVELOPE Min	0,78	0	-499,7662	0	-41,3976	0	-443,2839
LT 5	B47	330 ENVELOPE Min	1,21	0	-474,3298	0	-41,3976	0	-264,846
LT 5	B47	330 ENVELOPE Min	1,64	0	-447,2693	0	-41,3976	0	-95,9251
LT 5	B47	330 ENVELOPE Min	2,07	0	-429,2853	0	-41,3976	0	39,5879
LT 5	B47	330 ENVELOPE Min	2,5	0	-420,4568	0	-41,3976	0	127,1245
LT 5	B47	330 ENVELOPE Min	2,5	0	-88,8022	0	0,9319	0	125,3859
LT 5	B47	330 ENVELOPE Min	3	0	-78,6915	0	0,9319	0	139,6619
LT 5	B47	330 ENVELOPE Min	3,5	0	-59,4507	0	0,9319	0	149,4195
LT 5	B47	330 ENVELOPE Min	4	0	-31,0947	0	0,9319	0	153,0236
LT 5	B47	330 ENVELOPE Min	4,5	0	-8,6273	0	0,9319	0	149,384
LT 5	B47	330 ENVELOPE Min	5	0	6,0947	0	0,9319	0	139,5908
LT 5	B47	330 ENVELOPE Min	5,5	0	13,0714	0	0,9319	0	125,2793
LT 5	B47	330 ENVELOPE Min	5,5	0	153,3759	0	-20,9382	0	127,6176
LT 5	B47	330 ENVELOPE Min	5,93	0	159,5443	0	-20,9382	0	38,0575
LT 5	B47	330 ENVELOPE Min	6,36	0	168,1315	0	-20,9382	0	-98,6771
LT 5	B47	330 ENVELOPE Min	6,79	0	179,1165	0	-20,9382	0	-268,918
LT 5	B47	330 ENVELOPE Min	7,22	0	189,6725	0	-20,9382	0	-448,6927
LT 5	B47	330 ENVELOPE Min	7,65	0	197,8097	0	-20,9382	0	-663,3155
LT 4	B46	417 ENVELOPE Max	0,35	0	-194,0313	0	30,9685	0	-244,7212
LT 4	B46	417 ENVELOPE Max	0,78	0	-185,8941	0	30,9685	0	-138,387
LT 4	B46	417 ENVELOPE Max	1,21	0	-175,3381	0	30,9685	0	-27,1393
LT 4	B46	417 ENVELOPE Max	1,64	0	-164,353	0	30,9685	0	76,6419
LT 4	B46	417 ENVELOPE Max	2,07	0	-155,7658	0	30,9685	0	198,2697
LT 4	B46	417 ENVELOPE Max	2,5	0	-149,5974	0	30,9685	0	329,967
LT 4	B46	417 ENVELOPE Max	2,5	0	-3,2697	0	2,0086	0	331,7616
LT 4	B46	417 ENVELOPE Max	3	0	3,707	0	2,0086	0	365,0423
LT 4	B46	417 ENVELOPE Max	3,5	0	18,429	0	2,0086	0	389,6622
LT 4	B46	417 ENVELOPE Max	4	0	40,8964	0	2,0086	0	399,4316
LT 4	B46	417 ENVELOPE Max	4,5	0	69,1717	0	2,0086	0	390,2241
LT 4	B46	417 ENVELOPE Max	5	0	88,4125	0	2,0086	0	366,1662
LT 4	B46	417 ENVELOPE Max	5,5	0	98,5232	0	2,0086	0	333,4474
LT 4	B46	417 ENVELOPE Max	5,5	0	413,9421	0	45,1208	0	334,1746
LT 4	B46	417 ENVELOPE Max	5,93	0	422,7705	0	45,1208	0	200,7378
LT 4	B46	417 ENVELOPE Max	6,36	0	440,7546	0	45,1208	0	78,0776
LT 4	B46	417 ENVELOPE Max	6,79	0	467,8151	0	45,1208	0	-26,2685
LT 4	B46	417 ENVELOPE Max	7,22	0	493,2514	0	45,1208	0	-138,0813
LT 4	B46	417 ENVELOPE Max	7,65	0	509,5321	0	45,1208	0	-243,7431
LT 4	B46	417 ENVELOPE Min	0,35	0	-507,4402	0	-45,5731	0	-660,0607
LT 4	B46	417 ENVELOPE Min	0,78	0	-491,1595	0	-45,5731	0	-473,0961
LT 4	B46	417 ENVELOPE Min	1,21	0	-465,7232	0	-45,5731	0	-293,4493
LT 4	B46	417 ENVELOPE Min	1,64	0	-438,6627	0	-45,5731	0	-123,3022
LT 4	B46	417 ENVELOPE Min	2,07	0	-420,6786	0	-45,5731	0	15,0675
LT 4	B46	417 ENVELOPE Min	2,5	0	-411,8502	0	-45,5731	0	122,0574
LT 4	B46	417 ENVELOPE Min	2,5	0	-99,4182	0	0,3342	0	122,5016
LT 4	B46	417 ENVELOPE Min	3	0	-89,3076	0	0,3342	0	136,9084
LT 4	B46	417 ENVELOPE Min	3,5	0	-70,0667	0	0,3342	0	146,7968
LT 4	B46	417 ENVELOPE Min	4	0	-41,6957	0	0,3342	0	150,5317
LT 4	B46	417 ENVELOPE Min	4,5	0	-19,1326	0	0,3342	0	147,0229
LT 4	B46	417 ENVELOPE Min	5	0	-4,4105	0	0,3342	0	137,3605
LT 4	B46	417 ENVELOPE Min	5,5	0	2,5661	0	0,3342	0	123,1798
LT 4	B46	417 ENVELOPE Min	5,5	0	149,6711	0	-32,2575	0	123,1941
LT 4	B46	417 ENVELOPE Min	5,93	0	155,8396	0	-32,2575	0	17,2081
LT 4	B46	417 ENVELOPE Min	6,36	0	164,4268	0	-32,2575	0	-121,2671
LT 4	B46	417 ENVELOPE Min	6,79	0	175,4118	0	-32,2575	0	-291,9873
LT 4	B46	417 ENVELOPE Min	7,22	0	185,9678	0	-32,2575	0	-472,207
LT 4	B46	417 ENVELOPE Min	7,65	0	194,105	0	-32,2575	0	-659,7444
LT 4	B47	418 ENVELOPE Max	0,35	0	-198,5555	0	30,1	0	-249,0836
LT 4	B47	418 ENVELOPE Max	0,78	0	-190,4183	0	30,1	0	-141,6677
LT 4	B47	418 ENVELOPE Max	1,21	0	-179,8623	0	30,1	0	-27,3487
LT 4	B47	418 ENVELOPE Max	1,64	0	-168,8773	0	30,1	0	79,5391
LT 4	B47	418 ENVELOPE Max	2,07	0	-160,2901	0	30,1	0	205,7749
LT 4	B47	418 ENVELOPE Max	2,5	0	-154,1216	0	30,1	0	344,5453

LT 4	B47	418 ENVELOPE Max	2,5	0	-2,4953	0	2,2809	0	339,7441
LT 4	B47	418 ENVELOPE Max	3	0	4,4813	0	2,2809	0	372,3851
LT 4	B47	418 ENVELOPE Max	3,5	0	19,2034	0	2,2809	0	396,3652
LT 4	B47	418 ENVELOPE Max	4	0	41,6708	0	2,2809	0	405,4948
LT 4	B47	418 ENVELOPE Max	4,5	0	69,9647	0	2,2809	0	395,6475
LT 4	B47	418 ENVELOPE Max	5	0	89,2055	0	2,2809	0	370,9498
LT 4	B47	418 ENVELOPE Max	5,5	0	99,3162	0	2,2809	0	337,5911
LT 4	B47	418 ENVELOPE Max	5,5	0	426,3622	0	46,7183	0	344,4684
LT 4	B47	418 ENVELOPE Max	5,93	0	435,1907	0	46,7183	0	205,2341
LT 4	B47	418 ENVELOPE Max	6,36	0	453,1747	0	46,7183	0	77,8087
LT 4	B47	418 ENVELOPE Max	6,79	0	480,2352	0	46,7183	0	-29,8324
LT 4	B47	418 ENVELOPE Max	7,22	0	505,6716	0	46,7183	0	-144,8993
LT 4	B47	418 ENVELOPE Max	7,65	0	521,9523	0	46,7183	0	-248,175
LT 4	B47	418 ENVELOPE Min	0,35	0	-518,8644	0	-47,4377	0	-668,0795
LT 4	B47	418 ENVELOPE Min	0,78	0	-502,5837	0	-47,4377	0	-477,1902
LT 4	B47	418 ENVELOPE Min	1,21	0	-477,1474	0	-47,4377	0	-293,6406
LT 4	B47	418 ENVELOPE Min	1,64	0	-450,0869	0	-47,4377	0	-119,6258
LT 4	B47	418 ENVELOPE Min	2,07	0	-432,1028	0	-47,4377	0	21,11
LT 4	B47	418 ENVELOPE Min	2,5	0	-423,2744	0	-47,4377	0	127,4221
LT 4	B47	418 ENVELOPE Min	2,5	0	-98,5742	0	0,7257	0	125,6252
LT 4	B47	418 ENVELOPE Min	3	0	-88,4636	0	0,7257	0	140,01
LT 4	B47	418 ENVELOPE Min	3,5	0	-69,2228	0	0,7257	0	149,8764
LT 4	B47	418 ENVELOPE Min	4	0	-40,8517	0	0,7257	0	153,5893
LT 4	B47	418 ENVELOPE Min	4,5	0	-18,3072	0	0,7257	0	150,0585
LT 4	B47	418 ENVELOPE Min	5	0	-3,5852	0	0,7257	0	140,3741
LT 4	B47	418 ENVELOPE Min	5,5	0	3,3914	0	0,7257	0	126,1714
LT 4	B47	418 ENVELOPE Min	5,5	0	154,1464	0	-31,364	0	128,384
LT 4	B47	418 ENVELOPE Min	5,93	0	160,3148	0	-31,364	0	20,3027
LT 4	B47	418 ENVELOPE Min	6,36	0	168,902	0	-31,364	0	-120,9079
LT 4	B47	418 ENVELOPE Min	6,79	0	179,8871	0	-31,364	0	-295,8337
LT 4	B47	418 ENVELOPE Min	7,22	0	190,4431	0	-31,364	0	-480,2998
LT 4	B47	418 ENVELOPE Min	7,65	0	198,5803	0	-31,364	0	-672,1032
LT 3	B46	505 ENVELOPE Max	0,35	0	-194,3481	0	38,6262	0	-227,2067
LT 3	B46	505 ENVELOPE Max	0,78	0	-186,2109	0	38,6262	0	-113,5154
LT 3	B46	505 ENVELOPE Max	1,21	0	-175,6549	0	38,6262	0	-5,4399
LT 3	B46	505 ENVELOPE Max	1,64	0	-164,6698	0	38,6262	0	95,1692
LT 3	B46	505 ENVELOPE Max	2,07	0	-156,0826	0	38,6262	0	213,6262
LT 3	B46	505 ENVELOPE Max	2,5	0	-149,9142	0	38,6262	0	332,3727
LT 3	B46	505 ENVELOPE Max	2,5	0	4,621	0	1,6251	0	333,5116
LT 3	B46	505 ENVELOPE Max	3	0	11,5976	0	1,6251	0	365,2213
LT 3	B46	505 ENVELOPE Max	3,5	0	26,3197	0	1,6251	0	389,8768
LT 3	B46	505 ENVELOPE Max	4	0	48,7871	0	1,6251	0	399,6819
LT 3	B46	505 ENVELOPE Max	4,5	0	77,0398	0	1,6251	0	390,51
LT 3	B46	505 ENVELOPE Max	5	0	96,2806	0	1,6251	0	366,4877
LT 3	B46	505 ENVELOPE Max	5,5	0	106,3912	0	1,6251	0	334,9077
LT 3	B46	505 ENVELOPE Max	5,5	0	414,0336	0	52,1093	0	335,2343
LT 3	B46	505 ENVELOPE Max	5,93	0	422,862	0	52,1093	0	216,1661
LT 3	B46	505 ENVELOPE Max	6,36	0	440,846	0	52,1093	0	96,8192
LT 3	B46	505 ENVELOPE Max	6,79	0	467,9066	0	52,1093	0	-4,1419
LT 3	B46	505 ENVELOPE Max	7,22	0	493,3429	0	52,1093	0	-112,5696
LT 3	B46	505 ENVELOPE Max	7,65	0	509,6236	0	52,1093	0	-226,6134
LT 3	B46	505 ENVELOPE Min	0,35	0	-508,3314	0	-52,1822	0	-690,2397
LT 3	B46	505 ENVELOPE Min	0,78	0	-492,0507	0	-52,1822	0	-499,5653
LT 3	B46	505 ENVELOPE Min	1,21	0	-466,6144	0	-52,1822	0	-316,2089
LT 3	B46	505 ENVELOPE Min	1,64	0	-439,5539	0	-52,1822	0	-142,3523
LT 3	B46	505 ENVELOPE Min	2,07	0	-421,5698	0	-52,1822	0	-0,2745
LT 3	B46	505 ENVELOPE Min	2,5	0	-412,7414	0	-52,1822	0	122,1962
LT 3	B46	505 ENVELOPE Min	2,5	0	-107,4209	0	0,2602	0	122,5833
LT 3	B46	505 ENVELOPE Min	3	0	-97,3102	0	0,2602	0	137,0168
LT 3	B46	505 ENVELOPE Min	3,5	0	-78,0694	0	0,2602	0	146,9319
LT 3	B46	505 ENVELOPE Min	4	0	-49,6984	0	0,2602	0	150,6935
LT 3	B46	505 ENVELOPE Min	4,5	0	-27,1126	0	0,2602	0	147,2115
LT 3	B46	505 ENVELOPE Min	5	0	-12,3906	0	0,2602	0	137,5758
LT 3	B46	505 ENVELOPE Min	5,5	0	-5,414	0	0,2602	0	123,4218
LT 3	B46	505 ENVELOPE Min	5,5	0	149,7555	0	-39,888	0	123,3992
LT 3	B46	505 ENVELOPE Min	5,93	0	155,924	0	-39,888	0	2,006

LT 3	B46	505 ENVELOPE Min	6,36	0	164,5112	0	-39,888	0	-139,8473
LT 3	B46	505 ENVELOPE Min	6,79	0	175,4962	0	-39,888	0	-314,0172
LT 3	B46	505 ENVELOPE Min	7,22	0	186,0522	0	-39,888	0	-497,6866
LT 3	B46	505 ENVELOPE Min	7,65	0	194,1894	0	-39,888	0	-688,6738
LT 3	B47	506 ENVELOPE Max	0,35	0	-198,6547	0	38,7176	0	-233,2214
LT 3	B47	506 ENVELOPE Max	0,78	0	-190,5175	0	38,7176	0	-116,4407
LT 3	B47	506 ENVELOPE Max	1,21	0	-179,9615	0	38,7176	0	-5,241
LT 3	B47	506 ENVELOPE Max	1,64	0	-168,9765	0	38,7176	0	98,5479
LT 3	B47	506 ENVELOPE Max	2,07	0	-160,3893	0	38,7176	0	221,9075
LT 3	B47	506 ENVELOPE Max	2,5	0	-154,2208	0	38,7176	0	345,9255
LT 3	B47	506 ENVELOPE Max	2,5	0	5,522	0	1,9054	0	340,8542
LT 3	B47	506 ENVELOPE Max	3	0	12,4987	0	1,9054	0	373,4506
LT 3	B47	506 ENVELOPE Max	3,5	0	27,2207	0	1,9054	0	397,3862
LT 3	B47	506 ENVELOPE Max	4	0	49,6881	0	1,9054	0	406,4712
LT 3	B47	506 ENVELOPE Max	4,5	0	78,0415	0	1,9054	0	396,5795
LT 3	B47	506 ENVELOPE Max	5	0	97,2823	0	1,9054	0	371,8372
LT 3	B47	506 ENVELOPE Max	5,5	0	107,3929	0	1,9054	0	339,2012
LT 3	B47	506 ENVELOPE Max	5,5	0	427,4755	0	53,1294	0	345,2417
LT 3	B47	506 ENVELOPE Max	5,93	0	436,3039	0	53,1294	0	220,7167
LT 3	B47	506 ENVELOPE Max	6,36	0	454,288	0	53,1294	0	96,4864
LT 3	B47	506 ENVELOPE Max	6,79	0	481,3485	0	53,1294	0	-7,9909
LT 3	B47	506 ENVELOPE Max	7,22	0	506,7848	0	53,1294	0	-119,8891
LT 3	B47	506 ENVELOPE Max	7,65	0	523,0655	0	53,1294	0	-237,3823
LT 3	B47	506 ENVELOPE Min	0,35	0	-520,0542	0	-53,5194	0	-697,7844
LT 3	B47	506 ENVELOPE Min	0,78	0	-503,7735	0	-53,5194	0	-503,1047
LT 3	B47	506 ENVELOPE Min	1,21	0	-478,3371	0	-53,5194	0	-315,7779
LT 3	B47	506 ENVELOPE Min	1,64	0	-451,2766	0	-53,5194	0	-138,0065
LT 3	B47	506 ENVELOPE Min	2,07	0	-433,2925	0	-53,5194	0	6,2633
LT 3	B47	506 ENVELOPE Min	2,5	0	-424,4641	0	-53,5194	0	127,9319
LT 3	B47	506 ENVELOPE Min	2,5	0	-106,4201	0	0,6329	0	126,0651
LT 3	B47	506 ENVELOPE Min	3	0	-96,3095	0	0,6329	0	140,3797
LT 3	B47	506 ENVELOPE Min	3,5	0	-77,0687	0	0,6329	0	150,176
LT 3	B47	506 ENVELOPE Min	4	0	-48,6976	0	0,6329	0	153,8187
LT 3	B47	506 ENVELOPE Min	4,5	0	-26,2125	0	0,6329	0	150,2178
LT 3	B47	506 ENVELOPE Min	5	0	-11,4905	0	0,6329	0	140,4633
LT 3	B47	506 ENVELOPE Min	5,5	0	-4,5138	0	0,6329	0	126,1904
LT 3	B47	506 ENVELOPE Min	5,5	0	154,5107	0	-39,8253	0	128,4187
LT 3	B47	506 ENVELOPE Min	5,93	0	160,6792	0	-39,8253	0	5,1361
LT 3	B47	506 ENVELOPE Min	6,36	0	169,2664	0	-39,8253	0	-139,9351
LT 3	B47	506 ENVELOPE Min	6,79	0	180,2514	0	-39,8253	0	-318,6901
LT 3	B47	506 ENVELOPE Min	7,22	0	190,8074	0	-39,8253	0	-506,9905
LT 3	B47	506 ENVELOPE Min	7,65	0	198,9446	0	-39,8253	0	-702,6296
LT 2	B46	593 ENVELOPE Max	0,35	0	-194,7153	0	44,0879	0	-206,397
LT 2	B46	593 ENVELOPE Max	0,78	0	-186,5781	0	44,0879	0	-94,999
LT 2	B46	593 ENVELOPE Max	1,21	0	-176,0221	0	44,0879	0	10,7834
LT 2	B46	593 ENVELOPE Max	1,64	0	-165,0371	0	44,0879	0	109,0995
LT 2	B46	593 ENVELOPE Max	2,07	0	-156,4498	0	44,0879	0	225,2884
LT 2	B46	593 ENVELOPE Max	2,5	0	-150,2814	0	44,0879	0	341,8096
LT 2	B46	593 ENVELOPE Max	2,5	0	10,6784	0	1,1302	0	342,6915
LT 2	B46	593 ENVELOPE Max	3	0	17,655	0	1,1302	0	365,3256
LT 2	B46	593 ENVELOPE Max	3,5	0	32,377	0	1,1302	0	389,8862
LT 2	B46	593 ENVELOPE Max	4	0	54,8445	0	1,1302	0	399,5963
LT 2	B46	593 ENVELOPE Max	4,5	0	83,1171	0	1,1302	0	390,3295
LT 2	B46	593 ENVELOPE Max	5	0	102,3579	0	1,1302	0	366,2122
LT 2	B46	593 ENVELOPE Max	5,5	0	112,4686	0	1,1302	0	343,4823
LT 2	B46	593 ENVELOPE Max	5,5	0	414,5103	0	56,2333	0	343,6597
LT 2	B46	593 ENVELOPE Max	5,93	0	423,3388	0	56,2333	0	226,9577
LT 2	B46	593 ENVELOPE Max	6,36	0	441,3228	0	56,2333	0	110,1024
LT 2	B46	593 ENVELOPE Max	6,79	0	468,3833	0	56,2333	0	11,5621
LT 2	B46	593 ENVELOPE Max	7,22	0	493,8197	0	56,2333	0	-94,4447
LT 2	B46	593 ENVELOPE Max	7,65	0	510,1004	0	56,2333	0	-206,0673
LT 2	B46	593 ENVELOPE Min	0,35	0	-509,3001	0	-55,9154	0	-713,2141
LT 2	B46	593 ENVELOPE Min	0,78	0	-493,0194	0	-55,9154	0	-519,6581
LT 2	B46	593 ENVELOPE Min	1,21	0	-467,583	0	-55,9154	0	-333,4203
LT 2	B46	593 ENVELOPE Min	1,64	0	-440,5225	0	-55,9154	0	-156,6824
LT 2	B46	593 ENVELOPE Min	2,07	0	-422,5385	0	-55,9154	0	-11,7481

LT 2	B46	593 ENVELOPE Min	2,5	0	-413,71	0	-55,9154	0	122,4121
LT 2	B46	593 ENVELOPE Min	2,5	0	-113,2206	0	0,1697	0	122,7053
LT 2	B46	593 ENVELOPE Min	3	0	-103,11	0	0,1697	0	137,1152
LT 2	B46	593 ENVELOPE Min	3,5	0	-83,8692	0	0,1697	0	147,0068
LT 2	B46	593 ENVELOPE Min	4	0	-55,4982	0	0,1697	0	150,7448
LT 2	B46	593 ENVELOPE Min	4,5	0	-32,9324	0	0,1697	0	147,2391
LT 2	B46	593 ENVELOPE Min	5	0	-18,2103	0	0,1697	0	137,5798
LT 2	B46	593 ENVELOPE Min	5,5	0	-11,2337	0	0,1697	0	123,4022
LT 2	B46	593 ENVELOPE Min	5,5	0	150,0491	0	-45,1802	0	123,3573
LT 2	B46	593 ENVELOPE Min	5,93	0	156,2175	0	-45,1802	0	-9,8656
LT 2	B46	593 ENVELOPE Min	6,36	0	164,8048	0	-45,1802	0	-154,5208
LT 2	B46	593 ENVELOPE Min	6,79	0	175,7898	0	-45,1802	0	-331,4219
LT 2	B46	593 ENVELOPE Min	7,22	0	186,3458	0	-45,1802	0	-517,8226
LT 2	B46	593 ENVELOPE Min	7,65	0	194,483	0	-45,1802	0	-711,5414
LT 2	B47	594 ENVELOPE Max	0,35	0	-199,0547	0	45,4876	0	-212,836
LT 2	B47	594 ENVELOPE Max	0,78	0	-190,9175	0	45,4876	0	-98,1313
LT 2	B47	594 ENVELOPE Max	1,21	0	-180,3615	0	45,4876	0	11,0041
LT 2	B47	594 ENVELOPE Max	1,64	0	-169,3765	0	45,4876	0	112,7458
LT 2	B47	594 ENVELOPE Max	2,07	0	-160,7893	0	45,4876	0	234,2694
LT 2	B47	594 ENVELOPE Max	2,5	0	-154,6209	0	45,4876	0	355,2024
LT 2	B47	594 ENVELOPE Max	2,5	0	11,5425	0	1,3836	0	350,8978
LT 2	B47	594 ENVELOPE Max	3	0	18,5192	0	1,3836	0	374,8644
LT 2	B47	594 ENVELOPE Max	3,5	0	33,2412	0	1,3836	0	398,7911
LT 2	B47	594 ENVELOPE Max	4	0	55,7424	0	1,3836	0	407,8674
LT 2	B47	594 ENVELOPE Max	4,5	0	84,1134	0	1,3836	0	397,9667
LT 2	B47	594 ENVELOPE Max	5	0	103,3542	0	1,3836	0	373,2156
LT 2	B47	594 ENVELOPE Max	5,5	0	113,4648	0	1,3836	0	349,1843
LT 2	B47	594 ENVELOPE Max	5,5	0	429,1175	0	56,2553	0	354,3523
LT 2	B47	594 ENVELOPE Max	5,93	0	437,9459	0	56,2553	0	232,6124
LT 2	B47	594 ENVELOPE Max	6,36	0	455,93	0	56,2553	0	110,5711
LT 2	B47	594 ENVELOPE Max	6,79	0	482,9905	0	56,2553	0	8,263
LT 2	B47	594 ENVELOPE Max	7,22	0	508,4268	0	56,2553	0	-101,4636
LT 2	B47	594 ENVELOPE Max	7,65	0	524,7075	0	56,2553	0	-216,7845
LT 2	B47	594 ENVELOPE Min	0,35	0	-522,0543	0	-56,2361	0	-721,4572
LT 2	B47	594 ENVELOPE Min	0,78	0	-505,7736	0	-56,2361	0	-523,5528
LT 2	B47	594 ENVELOPE Min	1,21	0	-480,3372	0	-56,2361	0	-333,0129
LT 2	B47	594 ENVELOPE Min	1,64	0	-453,2767	0	-56,2361	0	-152,0455
LT 2	B47	594 ENVELOPE Min	2,07	0	-435,2927	0	-56,2361	0	-4,7908
LT 2	B47	594 ENVELOPE Min	2,5	0	-426,4642	0	-56,2361	0	128,5573
LT 2	B47	594 ENVELOPE Min	2,5	0	-112,3664	0	0,4952	0	126,6227
LT 2	B47	594 ENVELOPE Min	3	0	-102,2558	0	0,4952	0	140,8766
LT 2	B47	594 ENVELOPE Min	3,5	0	-83,015	0	0,4952	0	150,6122
LT 2	B47	594 ENVELOPE Min	4	0	-54,6777	0	0,4952	0	154,1942
LT 2	B47	594 ENVELOPE Min	4,5	0	-32,2103	0	0,4952	0	150,5325
LT 2	B47	594 ENVELOPE Min	5	0	-17,4882	0	0,4952	0	140,7173
LT 2	B47	594 ENVELOPE Min	5,5	0	-10,5116	0	0,4952	0	126,3837
LT 2	B47	594 ENVELOPE Min	5,5	0	155,1132	0	-46,3304	0	128,607
LT 2	B47	594 ENVELOPE Min	5,93	0	161,2816	0	-46,3304	0	-6,1116
LT 2	B47	594 ENVELOPE Min	6,36	0	169,8688	0	-46,3304	0	-154,3655
LT 2	B47	594 ENVELOPE Min	6,79	0	180,8539	0	-46,3304	0	-336,2833
LT 2	B47	594 ENVELOPE Min	7,22	0	191,4098	0	-46,3304	0	-527,7488
LT 2	B47	594 ENVELOPE Min	7,65	0	199,547	0	-46,3304	0	-726,5538
LT 1	B46	681 ENVELOPE Max	0,4	0	-194,4956	0	44,0645	0	-198,094
LT 1	B46	681 ENVELOPE Max	0,82	0	-186,3004	0	44,0645	0	-88,9645
LT 1	B46	681 ENVELOPE Max	1,24	0	-175,7976	0	44,0645	0	14,5889
LT 1	B46	681 ENVELOPE Max	1,66	0	-165,1863	0	44,0645	0	110,9828
LT 1	B46	681 ENVELOPE Max	2,08	0	-156,8812	0	44,0645	0	226,2148
LT 1	B46	681 ENVELOPE Max	2,5	0	-150,8837	0	44,0645	0	340,8675
LT 1	B46	681 ENVELOPE Max	2,5	0	9,7743	0	0,5125	0	341,4264
LT 1	B46	681 ENVELOPE Max	3	0	16,7509	0	0,5125	0	365,2212
LT 1	B46	681 ENVELOPE Max	3,5	0	31,473	0	0,5125	0	389,9882
LT 1	B46	681 ENVELOPE Max	4	0	53,9404	0	0,5125	0	399,9048
LT 1	B46	681 ENVELOPE Max	4,5	0	82,1472	0	0,5125	0	390,8444
LT 1	B46	681 ENVELOPE Max	5	0	101,388	0	0,5125	0	366,9336
LT 1	B46	681 ENVELOPE Max	5,5	0	111,4986	0	0,5125	0	343,3489
LT 1	B46	681 ENVELOPE Max	5,5	0	414,393	0	52,5859	0	343,3014

LT 1	B46	681 ENVELOPE Max	5,92	0	422,9121	0	52,5859	0	229,1012
LT 1	B46	681 ENVELOPE Max	6,34	0	440,166	0	52,5859	0	113,5155
LT 1	B46	681 ENVELOPE Max	6,76	0	466,1497	0	52,5859	0	17,4363
LT 1	B46	681 ENVELOPE Max	7,18	0	491,7224	0	52,5859	0	-85,8025
LT 1	B46	681 ENVELOPE Max	7,6	0	508,5603	0	52,5859	0	-194,6173
LT 1	B46	681 ENVELOPE Min	0,4	0	-509,8217	0	-51,85	0	-691,0222
LT 1	B46	681 ENVELOPE Min	0,82	0	-492,9837	0	-51,85	0	-502,2269
LT 1	B46	681 ENVELOPE Min	1,24	0	-467,411	0	-51,85	0	-320,6711
LT 1	B46	681 ENVELOPE Min	1,66	0	-441,4273	0	-51,85	0	-148,2217
LT 1	B46	681 ENVELOPE Min	2,08	0	-424,1734	0	-51,85	0	-7,6642
LT 1	B46	681 ENVELOPE Min	2,5	0	-415,6543	0	-51,85	0	122,465
LT 1	B46	681 ENVELOPE Min	2,5	0	-112,8994	0	0,0396	0	122,6493
LT 1	B46	681 ENVELOPE Min	3	0	-102,7888	0	0,0396	0	137,137
LT 1	B46	681 ENVELOPE Min	3,5	0	-83,548	0	0,0396	0	147,1064
LT 1	B46	681 ENVELOPE Min	4	0	-55,177	0	0,0396	0	150,9222
LT 1	B46	681 ENVELOPE Min	4,5	0	-32,5453	0	0,0396	0	147,4943
LT 1	B46	681 ENVELOPE Min	5	0	-17,8232	0	0,0396	0	137,9129
LT 1	B46	681 ENVELOPE Min	5,5	0	-10,8466	0	0,0396	0	123,8131
LT 1	B46	681 ENVELOPE Min	5,5	0	150,1113	0	-44,9372	0	123,7193
LT 1	B46	681 ENVELOPE Min	5,92	0	156,1088	0	-44,9372	0	-5,0972
LT 1	B46	681 ENVELOPE Min	6,34	0	164,4138	0	-44,9372	0	-144,4998
LT 1	B46	681 ENVELOPE Min	6,76	0	175,0252	0	-44,9372	0	-316,4626
LT 1	B46	681 ENVELOPE Min	7,18	0	185,528	0	-44,9372	0	-497,5319
LT 1	B46	681 ENVELOPE Min	7,6	0	193,7232	0	-44,9372	0	-685,8406
LT 1	B47	682 ENVELOPE Max	0,4	0	-198,5405	0	47,0016	0	-203,5455
LT 1	B47	682 ENVELOPE Max	0,82	0	-190,3453	0	47,0016	0	-91,0076
LT 1	B47	682 ENVELOPE Max	1,24	0	-179,8425	0	47,0016	0	16,0114
LT 1	B47	682 ENVELOPE Max	1,66	0	-169,2311	0	47,0016	0	115,9563
LT 1	B47	682 ENVELOPE Max	2,08	0	-160,926	0	47,0016	0	237,0946
LT 1	B47	682 ENVELOPE Max	2,5	0	-154,9285	0	47,0016	0	356,2149
LT 1	B47	682 ENVELOPE Max	2,5	0	10,8457	0	0,7509	0	351,6028
LT 1	B47	682 ENVELOPE Max	3	0	17,8224	0	0,7509	0	377,0957
LT 1	B47	682 ENVELOPE Max	3,5	0	32,5444	0	0,7509	0	401,0156
LT 1	B47	682 ENVELOPE Max	4	0	55,1327	0	0,7509	0	410,0849
LT 1	B47	682 ENVELOPE Max	4,5	0	83,5037	0	0,7509	0	400,1774
LT 1	B47	682 ENVELOPE Max	5	0	102,7445	0	0,7509	0	375,4193
LT 1	B47	682 ENVELOPE Max	5,5	0	112,8552	0	0,7509	0	349,6167
LT 1	B47	682 ENVELOPE Max	5,5	0	431,2247	0	51,2419	0	354,6997
LT 1	B47	682 ENVELOPE Max	5,92	0	439,7438	0	51,2419	0	234,8608
LT 1	B47	682 ENVELOPE Max	6,34	0	456,9977	0	51,2419	0	113,737
LT 1	B47	682 ENVELOPE Max	6,76	0	482,9814	0	51,2419	0	13,3901
LT 1	B47	682 ENVELOPE Max	7,18	0	508,5541	0	51,2419	0	-94,072
LT 1	B47	682 ENVELOPE Max	7,6	0	525,3921	0	51,2419	0	-207,0906
LT 1	B47	682 ENVELOPE Min	0,4	0	-523,2121	0	-51,0538	0	-697,2124
LT 1	B47	682 ENVELOPE Min	0,82	0	-506,3742	0	-51,0538	0	-504,0675
LT 1	B47	682 ENVELOPE Min	1,24	0	-480,8015	0	-51,0538	0	-318,2192
LT 1	B47	682 ENVELOPE Min	1,66	0	-454,8178	0	-51,0538	0	-141,5628
LT 1	B47	682 ENVELOPE Min	2,08	0	-437,5639	0	-51,0538	0	0,8465
LT 1	B47	682 ENVELOPE Min	2,5	0	-429,0448	0	-51,0538	0	129,4815
LT 1	B47	682 ENVELOPE Min	2,5	0	-111,5642	0	0,2128	0	127,4666
LT 1	B47	682 ENVELOPE Min	3	0	-101,4536	0	0,2128	0	141,6176
LT 1	B47	682 ENVELOPE Min	3,5	0	-82,2128	0	0,2128	0	151,2503
LT 1	B47	682 ENVELOPE Min	4	0	-53,9626	0	0,2128	0	154,7294
LT 1	B47	682 ENVELOPE Min	4,5	0	-31,4952	0	0,2128	0	150,9649
LT 1	B47	682 ENVELOPE Min	5	0	-16,7731	0	0,2128	0	141,0468
LT 1	B47	682 ENVELOPE Min	5,5	0	-9,7965	0	0,2128	0	126,6103
LT 1	B47	682 ENVELOPE Min	5,5	0	155,8369	0	-47,3339	0	128,8555
LT 1	B47	682 ENVELOPE Min	5,92	0	161,8344	0	-47,3339	0	-0,7067
LT 1	B47	682 ENVELOPE Min	6,34	0	170,1395	0	-47,3339	0	-144,4384
LT 1	B47	682 ENVELOPE Min	6,76	0	180,7508	0	-47,3339	0	-322,0008
LT 1	B47	682 ENVELOPE Min	7,18	0	191,2536	0	-47,3339	0	-508,714
LT 1	B47	682 ENVELOPE Min	7,6	0	199,4488	0	-47,3339	0	-702,6862
BASE	B46	1011 ENVELOPE Max	0,4	27,8859	5,5477	0,0059	0,0585	0,0194	49,1091
BASE	B46	1011 ENVELOPE Max	0,88	27,8859	7,0802	0,0059	0,0585	0,0166	46,0783
BASE	B46	1011 ENVELOPE Max	1,36	27,8859	8,6126	0,0059	0,0585	0,0138	42,3121
BASE	B46	1011 ENVELOPE Max	1,84	27,8859	10,1451	0,0059	0,0585	0,011	38,7099

BASE	B46	1011	ENVELOPE	Max	2,32	27,8859	11,6775	0,0059	0,0585	0,0082	35,7678
BASE	B46	1011	ENVELOPE	Max	2,8	27,8859	13,21	0,0059	0,0585	0,0054	31,5116
BASE	B46	1011	ENVELOPE	Max	3,28	27,8859	14,7424	0,0059	0,0585	0,0025	25,9412
BASE	B46	1011	ENVELOPE	Max	3,76	27,8859	16,2749	0,0059	0,0585	-0,0002	19,0567
BASE	B46	1011	ENVELOPE	Max	4,24	27,8859	18,4498	0,0059	0,0585	0,003	18,9042
BASE	B46	1011	ENVELOPE	Max	4,72	27,8859	21,1877	0,0059	0,0585	0,0098	25,5353
BASE	B46	1011	ENVELOPE	Max	5,2	27,8859	23,9256	0,0059	0,0585	0,0167	30,8522
BASE	B46	1011	ENVELOPE	Max	5,68	27,8859	26,6635	0,0059	0,0585	0,0235	34,855
BASE	B46	1011	ENVELOPE	Max	6,16	27,8859	29,4015	0,0059	0,0585	0,0304	37,5436
BASE	B46	1011	ENVELOPE	Max	6,64	27,8859	32,1394	0,0059	0,0585	0,0372	41,102
BASE	B46	1011	ENVELOPE	Max	7,12	27,8859	34,8773	0,0059	0,0585	0,0441	44,653
BASE	B46	1011	ENVELOPE	Max	7,6	27,8859	37,6152	0,0059	0,0585	0,051	47,4684
BASE	B46	1011	ENVELOPE	Min	0,4	9,9355	-37,0872	-0,0143	-0,0507	-0,0519	-81,4564
BASE	B46	1011	ENVELOPE	Min	0,88	9,9355	-34,3493	-0,0143	-0,0507	-0,0451	-64,3117
BASE	B46	1011	ENVELOPE	Min	1,36	9,9355	-31,6114	-0,0143	-0,0507	-0,0382	-48,4811
BASE	B46	1011	ENVELOPE	Min	1,84	9,9355	-28,8735	-0,0143	-0,0507	-0,0314	-34,8644
BASE	B46	1011	ENVELOPE	Min	2,32	9,9355	-26,1356	-0,0143	-0,0507	-0,0245	-23,9577
BASE	B46	1011	ENVELOPE	Min	2,8	9,9355	-23,3976	-0,0143	-0,0507	-0,0176	-13,7865
BASE	B46	1011	ENVELOPE	Min	3,28	9,9355	-20,6597	-0,0143	-0,0507	-0,0108	-4,3509
BASE	B46	1011	ENVELOPE	Min	3,76	9,9355	-17,9218	-0,0143	-0,0507	-0,004	4,349
BASE	B46	1011	ENVELOPE	Min	4,24	9,9355	-15,1839	-0,0143	-0,0507	-0,0032	4,2672
BASE	B46	1011	ENVELOPE	Min	4,72	9,9355	-12,4460	-0,0143	-0,0507	-0,006	-4,6481
BASE	B46	1011	ENVELOPE	Min	5,2	9,9355	-9,7081	-0,0143	-0,0507	-0,0088	-14,299
BASE	B46	1011	ENVELOPE	Min	5,68	9,9355	-6,9702	-0,0143	-0,0507	-0,0116	-24,6854
BASE	B46	1011	ENVELOPE	Min	6,16	9,9355	-4,2323	-0,0143	-0,0507	-0,0144	-35,8075
BASE	B46	1011	ENVELOPE	Min	6,64	9,9355	-1,4944	-0,0143	-0,0507	-0,0172	-49,8492
BASE	B46	1011	ENVELOPE	Min	7,12	9,9355	1,2435	-0,0143	-0,0507	-0,02	-65,9332
BASE	B46	1011	ENVELOPE	Min	7,6	9,9355	4,0056	-0,0143	-0,0507	-0,0228	-83,3314
BASE	B47	1014	ENVELOPE	Max	0,4	18,3048	5,3129	0,0101	0,0734	0,0387	48,1476
BASE	B47	1014	ENVELOPE	Max	0,88	18,3048	6,8453	0,0101	0,0734	0,0338	45,2297
BASE	B47	1014	ENVELOPE	Max	1,36	18,3048	8,3778	0,0101	0,0734	0,029	41,5761
BASE	B47	1014	ENVELOPE	Max	1,84	18,3048	9,9102	0,0101	0,0734	0,0241	37,8591
BASE	B47	1014	ENVELOPE	Max	2,32	18,3048	11,4427	0,0101	0,0734	0,0193	35,0713
BASE	B47	1014	ENVELOPE	Max	2,8	18,3048	12,9751	0,0101	0,0734	0,0144	30,9692
BASE	B47	1014	ENVELOPE	Max	3,28	18,3048	14,5076	0,0101	0,0734	0,0096	25,553
BASE	B47	1014	ENVELOPE	Max	3,76	18,3048	16,04	0,0101	0,0734	0,0047	18,8226
BASE	B47	1014	ENVELOPE	Max	4,24	18,3048	18,1286	0,0101	0,0734	0,0041	18,8382
BASE	B47	1014	ENVELOPE	Max	4,72	18,3048	20,8665	0,0101	0,0734	0,0078	25,6362
BASE	B47	1014	ENVELOPE	Max	5,2	18,3048	23,6044	0,0101	0,0734	0,0117	31,1201
BASE	B47	1014	ENVELOPE	Max	5,68	18,3048	26,3423	0,0101	0,0734	0,0157	35,2899
BASE	B47	1014	ENVELOPE	Max	6,16	18,3048	29,0802	0,0101	0,0734	0,0197	38,1454
BASE	B47	1014	ENVELOPE	Max	6,64	18,3048	31,8181	0,0101	0,0734	0,0237	41,684
BASE	B47	1014	ENVELOPE	Max	7,12	18,3048	34,5561	0,0101	0,0734	0,0277	45,3605
BASE	B47	1014	ENVELOPE	Max	7,6	18,3048	37,294	0,0101	0,0734	0,0317	48,3014
BASE	B47	1014	ENVELOPE	Min	0,4	7,0451	-37,435	-0,0083	-0,0638	-0,0283	-82,858
BASE	B47	1014	ENVELOPE	Min	0,88	7,0451	-34,6971	-0,0083	-0,0638	-0,0243	-65,5463
BASE	B47	1014	ENVELOPE	Min	1,36	7,0451	-31,9592	-0,0083	-0,0638	-0,0203	-49,5488
BASE	B47	1014	ENVELOPE	Min	1,84	7,0451	-29,2213	-0,0083	-0,0638	-0,0163	-35,5375
BASE	B47	1014	ENVELOPE	Min	2,32	7,0451	-26,4833	-0,0083	-0,0638	-0,0123	-24,5053
BASE	B47	1014	ENVELOPE	Min	2,8	7,0451	-23,7454	-0,0083	-0,0638	-0,0083	-14,2086
BASE	B47	1014	ENVELOPE	Min	3,28	7,0451	-21,0075	-0,0083	-0,0638	-0,0043	-4,6475
BASE	B47	1014	ENVELOPE	Min	3,76	7,0451	-18,2696	-0,0083	-0,0638	-0,0003	4,178
BASE	B47	1014	ENVELOPE	Min	4,24	7,0451	-16,0878	-0,0083	-0,0638	-0,0006	4,2078
BASE	B47	1014	ENVELOPE	Min	4,72	7,0451	-14,5554	-0,0083	-0,0638	-0,0051	-4,5948
BASE	B47	1014	ENVELOPE	Min	5,2	7,0451	-13,0229	-0,0083	-0,0638	-0,0099	-14,1329
BASE	B47	1014	ENVELOPE	Min	5,68	7,0451	-11,4905	-0,0083	-0,0638	-0,0147	-24,4066
BASE	B47	1014	ENVELOPE	Min	6,16	7,0451	-9,958	-0,0083	-0,0638	-0,0196	-35,4159
BASE	B47	1014	ENVELOPE	Min	6,64	7,0451	-8,4256	-0,0083	-0,0638	-0,0244	-49,1581
BASE	B47	1014	ENVELOPE	Min	7,12	7,0451	-6,8931	-0,0083	-0,0638	-0,0293	-65,0879
BASE	B47	1014	ENVELOPE	Min	7,6	7,0451	-5,3607	-0,0083	-0,0638	-0,0341	-82,3319

TABLE: Column Forces

Story	Column	Unique Name	Load Case/Combo	Station	P	V2	V3	T	M2	M3
LT 6	C41	875	ENVELOPE Max	0	-593,1185	24,8457	46,399	0,5512	85,3829	26,6455
LT 6	C41	875	ENVELOPE Max	1,9	-559,3115	24,8457	46,399	0,5512	9,7452	26,1674
LT 6	C41	875	ENVELOPE Max	3,8	-525,5044	24,8457	46,399	0,5512	99,3841	171,633
LT 6	C41	875	ENVELOPE Min	0	-1425,4367	-81,6077	-50,6692	-0,2404	-94,1677	-143,6259
LT 6	C41	875	ENVELOPE Min	1,9	-1396,4592	-81,6077	-50,6692	-0,2404	-10,4166	-35,2999
LT 6	C41	875	ENVELOPE Min	3,8	-1367,4818	-81,6077	-50,6692	-0,2404	-91,9421	-72,9177
LT 5	C41	813	ENVELOPE Max	0	-1193,6199	51,4578	65,5978	0,8855	129,2623	83,0597
LT 5	C41	813	ENVELOPE Max	1,9	-1154,1783	51,4578	65,5978	0,8855	18,9834	27,0172
LT 5	C41	813	ENVELOPE Max	3,8	-1114,7368	51,4578	65,5978	0,8855	130,4511	162,7088
LT 5	C41	813	ENVELOPE Min	0	-2852,7938	-83,223	-70,8139	-0,7267	-141,6126	-162,2299
LT 5	C41	813	ENVELOPE Min	1,9	-2818,9868	-83,223	-70,8139	-0,7267	-21,4231	-45,8336
LT 5	C41	813	ENVELOPE Min	3,8	-2785,1797	-83,223	-70,8139	-0,7267	-122,9801	-121,1714
LT 4	C41	736	ENVELOPE Max	0	-1796,6946	67,6108	81,4878	1,037	168,4288	127,1604
LT 4	C41	736	ENVELOPE Max	1,9	-1757,2531	67,6108	81,4878	1,037	26,4596	34,1762
LT 4	C41	736	ENVELOPE Max	3,8	-1717,8115	67,6108	81,4878	1,037	152,9506	190,6129
LT 4	C41	736	ENVELOPE Min	0	-4284,7153	-101,662	-87,045	-0,9774	-181,5443	-205,9241
LT 4	C41	736	ENVELOPE Min	1,9	-4250,9082	-101,662	-87,045	-0,9774	-29,0163	-48,2425
LT 4	C41	736	ENVELOPE Min	3,8	-4217,1012	-101,662	-87,045	-0,9774	-144,9487	-139,9818
LT 3	C41	201	ENVELOPE Max	0	-2400,6286	83,31	94,9379	1,1269	201,805	169,4515
LT 3	C41	201	ENVELOPE Max	1,9	-2361,187	83,31	94,9379	1,1269	31,7695	36,5169
LT 3	C41	201	ENVELOPE Max	3,8	-2321,7455	83,31	94,9379	1,1269	170,0464	196,7238
LT 3	C41	201	ENVELOPE Min	0	-5720,4348	-112,2525	-100,4054	-1,1934	-215,0121	-238,8519
LT 3	C41	201	ENVELOPE Min	1,9	-5686,6278	-112,2525	-100,4054	-1,1934	-34,5885	-50,9265
LT 3	C41	201	ENVELOPE Min	3,8	-5652,8207	-112,2525	-100,4054	-1,1934	-162,4771	-156,1427
LT 2	C41	154	ENVELOPE Max	0	-3006,18	95,6336	106,1806	1,1618	239,7389	218,1732
LT 2	C41	154	ENVELOPE Max	1,9	-2966,7385	95,6336	106,1806	1,1618	42,4462	45,2829
LT 2	C41	154	ENVELOPE Max	3,8	-2927,2969	95,6336	106,1806	1,1618	174,2382	179,2249
LT 2	C41	154	ENVELOPE Min	0	-7161,6272	-122,5708	-112,9135	-1,3541	-257,0671	-292,1253
LT 2	C41	154	ENVELOPE Min	1,9	-7127,8201	-122,5708	-112,9135	-1,3541	-46,9818	-68,0542
LT 2	C41	154	ENVELOPE Min	3,8	-7094,0131	-122,5708	-112,9135	-1,3541	-165,9814	-150,8155
LT 1	C41	113	ENVELOPE Max	0	-3614,0596	117,7469	116,1209	1,2766	273,331	308,7573
LT 1	C41	113	ENVELOPE Max	1,65	-3574,9146	117,7469	116,1209	1,2766	83,2639	116,1076
LT 1	C41	113	ENVELOPE Max	3,3	-3535,7696	117,7469	116,1209	1,2766	119,6568	78,2938
LT 1	C41	113	ENVELOPE Min	0	-8611,0314	-126,258	-115,9171	-1,2913	-265,6215	-344,4719
LT 1	C41	113	ENVELOPE Min	1,65	-8577,4785	-126,258	-115,9171	-1,2913	-75,8906	-137,7789
LT 1	C41	113	ENVELOPE Min	3,3	-8543,9257	-126,258	-115,9171	-1,2913	-112,6196	-85,9217
BASE	C41	69	ENVELOPE Max	0	-3743,4647	115,0136	109,207	0,9858	397,7222	431,7386
BASE	C41	69	ENVELOPE Max	0,9	-3722,1128	115,0136	109,207	0,9858	300,0342	328,939
BASE	C41	69	ENVELOPE Max	1,8	-3700,761	115,0136	109,207	0,9858	203,4588	226,8672
BASE	C41	69	ENVELOPE Min	0	-8720,0907	-131,1182	-122,0913	-1,3122	-418,5872	-482,9935
BASE	C41	69	ENVELOPE Min	0,9	-8701,7892	-131,1182	-122,0913	-1,3122	-309,3033	-365,6998
BASE	C41	69	ENVELOPE Min	1,8	-8683,4876	-131,1182	-122,0913	-1,3122	-201,1319	-249,1338

TABLE: Beam Forces

Story	Beam	Unique Name	Load Case/Combo	Station	P	V2	V3	T	M2	M3
LT 6	B72	260	ENVELOPE Max	0,45	0	-62,3407	0	0,0503	0	-35,9585
LT 6	B72	260	ENVELOPE Max	0,9136	0	-54,5389	0	0,0503	0	1,0208
LT 6	B72	260	ENVELOPE Max	1,3773	0	-44,0311	0	0,0503	0	31,0112
LT 6	B72	260	ENVELOPE Max	1,8409	0	-32,7832	0	0,0503	0	57,9213
LT 6	B72	260	ENVELOPE Max	2,3045	0	-15,2864	0	0,0503	0	80,0749
LT 6	B72	260	ENVELOPE Max	2,7682	0	4,6425	0	0,0503	0	98,236
LT 6	B72	260	ENVELOPE Max	3,2318	0	24,978	0	0,0503	0	101,635
LT 6	B72	260	ENVELOPE Max	3,6955	0	49,6695	0	0,0503	0	90,2719
LT 6	B72	260	ENVELOPE Max	4,1591	0	74,361	0	0,0503	0	72,757
LT 6	B72	260	ENVELOPE Max	4,6227	0	104,1085	0	0,0503	0	50,3608
LT 6	B72	260	ENVELOPE Max	5,0864	0	133,1473	0	0,0503	0	19,7985
LT 6	B72	260	ENVELOPE Max	5,55	0	151,943	0	0,0503	0	-12,9209
LT 6	B72	260	ENVELOPE Min	0,45	0	-166,6054	0	-0,0525	0	-157,0845
LT 6	B72	260	ENVELOPE Min	0,9136	0	-147,8097	0	-0,0525	0	-90,7822
LT 6	B72	260	ENVELOPE Min	1,3773	0	-118,7709	0	-0,0525	0	-33,2747
LT 6	B72	260	ENVELOPE Min	1,8409	0	-87,4984	0	-0,0525	0	7,0535
LT 6	B72	260	ENVELOPE Min	2,3045	0	-62,8069	0	-0,0525	0	26,6746
LT 6	B72	260	ENVELOPE Min	2,7682	0	-38,1154	0	-0,0525	0	34,0517
LT 6	B72	260	ENVELOPE Min	3,2318	0	-13,8305	0	-0,0525	0	36,2139
LT 6	B72	260	ENVELOPE Min	3,6955	0	6,0984	0	-0,0525	0	33,1612
LT 6	B72	260	ENVELOPE Min	4,1591	0	23,456	0	-0,0525	0	18,095
LT 6	B72	260	ENVELOPE Min	4,6227	0	34,7038	0	-0,0525	0	-16,3963
LT 6	B72	260	ENVELOPE Min	5,0864	0	45,2117	0	-0,0525	0	-62,981
LT 6	B72	260	ENVELOPE Min	5,55	0	53,0134	0	-0,0525	0	-123,1924
LT 6	B73	261	ENVELOPE Max	0,45	0	-63,2423	0	-2,3881	0	-46,9101
LT 6	B73	261	ENVELOPE Max	0,9136	0	-55,4405	0	-2,3881	0	-7,1525
LT 6	B73	261	ENVELOPE Max	1,3773	0	-44,9327	0	-2,3881	0	25,6163
LT 6	B73	261	ENVELOPE Max	1,8409	0	-33,6848	0	-2,3881	0	56,0005
LT 6	B73	261	ENVELOPE Max	2,3045	0	-21,2788	0	-2,3881	0	81,0316
LT 6	B73	261	ENVELOPE Max	2,7682	0	-1,3499	0	-2,3881	0	103,409
LT 6	B73	261	ENVELOPE Max	3,2318	0	18,6039	0	-2,3881	0	111,0241
LT 6	B73	261	ENVELOPE Max	3,6955	0	43,2954	0	-2,3881	0	103,8771
LT 6	B73	261	ENVELOPE Max	4,1591	0	67,9869	0	-2,3881	0	85,36
LT 6	B73	261	ENVELOPE Max	4,6227	0	95,0149	0	-2,3881	0	65,6346
LT 6	B73	261	ENVELOPE Max	5,0864	0	124,0536	0	-2,3881	0	35,8088
LT 6	B73	261	ENVELOPE Max	5,55	0	142,8493	0	-2,3881	0	5,5834
LT 6	B73	261	ENVELOPE Min	0,45	0	-175,6991	0	-8,6618	0	-165,8511
LT 6	B73	261	ENVELOPE Min	0,9136	0	-156,9033	0	-8,6618	0	-96,8778
LT 6	B73	261	ENVELOPE Min	1,3773	0	-127,8646	0	-8,6618	0	-36,6994
LT 6	B73	261	ENVELOPE Min	1,8409	0	-96,0247	0	-8,6618	0	5,6041
LT 6	B73	261	ENVELOPE Min	2,3045	0	-68,568	0	-8,6618	0	28,7352
LT 6	B73	261	ENVELOPE Min	2,7682	0	-43,8765	0	-8,6618	0	36,5303
LT 6	B73	261	ENVELOPE Min	3,2318	0	-19,2098	0	-8,6618	0	39,1105
LT 6	B73	261	ENVELOPE Min	3,6955	0	0,7191	0	-8,6618	0	36,4758
LT 6	B73	261	ENVELOPE Min	4,1591	0	20,6479	0	-8,6618	0	28,6263
LT 6	B73	261	ENVELOPE Min	4,6227	0	33,8023	0	-8,6618	0	-2,3444
LT 6	B73	261	ENVELOPE Min	5,0864	0	44,3101	0	-8,6618	0	-44,2162
LT 6	B73	261	ENVELOPE Min	5,55	0	52,1119	0	-8,6618	0	-101,4722
LT 5	B72	352	ENVELOPE Max	0,45	0	-62,4934	0	0,1564	0	-8,5516
LT 5	B72	352	ENVELOPE Max	0,9136	0	-54,6916	0	0,1564	0	23,3391
LT 5	B72	352	ENVELOPE Max	1,3773	0	-44,1689	0	0,1564	0	48,2408
LT 5	B72	352	ENVELOPE Max	1,8409	0	-24,24	0	0,1564	0	69,9129
LT 5	B72	352	ENVELOPE Max	2,3045	0	-4,3111	0	0,1564	0	81,8934
LT 5	B72	352	ENVELOPE Max	2,7682	0	15,6178	0	0,1564	0	97,2735
LT 5	B72	352	ENVELOPE Max	3,2318	0	35,8886	0	0,1564	0	101,5565
LT 5	B72	352	ENVELOPE Max	3,6955	0	60,5801	0	0,1564	0	92,8938
LT 5	B72	352	ENVELOPE Max	4,1591	0	85,2716	0	0,1564	0	88,1695
LT 5	B72	352	ENVELOPE Max	4,6227	0	109,9632	0	0,1564	0	71,9974
LT 5	B72	352	ENVELOPE Max	5,0864	0	132,5887	0	0,1564	0	47,5986
LT 5	B72	352	ENVELOPE Max	5,55	0	150,0364	0	0,1564	0	21,0731
LT 5	B72	352	ENVELOPE Min	0,45	0	-168,512	0	-0,0007	0	-191,4617
LT 5	B72	352	ENVELOPE Min	0,9136	0	-149,7163	0	-0,0007	0	-118,9354
LT 5	B72	352	ENVELOPE Min	1,3773	0	-125,614	0	-0,0007	0	-55,2039
LT 5	B72	352	ENVELOPE Min	1,8409	0	-100,9225	0	-0,0007	0	-8,5023
LT 5	B72	352	ENVELOPE Min	2,3045	0	-76,2309	0	-0,0007	0	26,3929

LT 5	B72	352 ENVELOPE Min	2,7682	0	-51,5394	0	-0,0007	0	33,8408
LT 5	B72	352 ENVELOPE Min	3,2318	0	-27,1898	0	-0,0007	0	36,0739
LT 5	B72	352 ENVELOPE Min	3,6955	0	-7,261	0	-0,0007	0	33,092
LT 5	B72	352 ENVELOPE Min	4,1591	0	12,6679	0	-0,0007	0	4,7949
LT 5	B72	352 ENVELOPE Min	4,6227	0	32,5968	0	-0,0007	0	-34,7852
LT 5	B72	352 ENVELOPE Min	5,0864	0	45,0589	0	-0,0007	0	-86,398
LT 5	B72	352 ENVELOPE Min	5,55	0	52,8607	0	-0,0007	0	-151,6679
LT 5	B73	353 ENVELOPE Max	0,45	0	-66,436	0	-1,3952	0	-32,5002
LT 5	B73	353 ENVELOPE Max	0,9136	0	-58,6342	0	-1,3952	0	3,9205
LT 5	B73	353 ENVELOPE Max	1,3773	0	-48,1264	0	-1,3952	0	33,3523
LT 5	B73	353 ENVELOPE Max	1,8409	0	-34,0108	0	-1,3952	0	57,4516
LT 5	B73	353 ENVELOPE Max	2,3045	0	-14,082	0	-1,3952	0	74,7362
LT 5	B73	353 ENVELOPE Max	2,7682	0	5,8469	0	-1,3952	0	94,9162
LT 5	B73	353 ENVELOPE Max	3,2318	0	25,7758	0	-1,3952	0	106,1908
LT 5	B73	353 ENVELOPE Max	3,6955	0	49,1399	0	-1,3952	0	102,7032
LT 5	B73	353 ENVELOPE Max	4,1591	0	73,8314	0	-1,3952	0	100,9376
LT 5	B73	353 ENVELOPE Max	4,6227	0	98,5229	0	-1,3952	0	89,7582
LT 5	B73	353 ENVELOPE Max	5,0864	0	121,1485	0	-1,3952	0	67,3626
LT 5	B73	353 ENVELOPE Max	5,55	0	136,2194	0	-1,3952	0	44,7304
LT 5	B73	353 ENVELOPE Min	0,45	0	-183,5919	0	-4,0398	0	-218,6356
LT 5	B73	353 ENVELOPE Min	0,9136	0	-164,7962	0	-4,0398	0	-141,1166
LT 5	B73	353 ENVELOPE Min	1,3773	0	-136,3827	0	-4,0398	0	-72,3923
LT 5	B73	353 ENVELOPE Min	1,8409	0	-111,6912	0	-4,0398	0	-18,595
LT 5	B73	353 ENVELOPE Min	2,3045	0	-86,9996	0	-4,0398	0	21,3293
LT 5	B73	353 ENVELOPE Min	2,7682	0	-62,3081	0	-4,0398	0	32,5301
LT 5	B73	353 ENVELOPE Min	3,2318	0	-37,6166	0	-4,0398	0	36,591
LT 5	B73	353 ENVELOPE Min	3,6955	0	-16,3602	0	-4,0398	0	35,4371
LT 5	B73	353 ENVELOPE Min	4,1591	0	3,5687	0	-4,0398	0	17,0871
LT 5	B73	353 ENVELOPE Min	4,6227	0	23,4975	0	-4,0398	0	-17,9628
LT 5	B73	353 ENVELOPE Min	5,0864	0	41,1163	0	-4,0398	0	-62,056
LT 5	B73	353 ENVELOPE Min	5,55	0	48,9181	0	-4,0398	0	-121,6964
LT 4	B72	440 ENVELOPE Max	0,45	0	-61,6287	0	0,1737	0	16,4826
LT 4	B72	440 ENVELOPE Max	0,9136	0	-52,5878	0	0,1737	0	43,8494
LT 4	B72	440 ENVELOPE Max	1,3773	0	-34,4116	0	0,1737	0	64,2272
LT 4	B72	440 ENVELOPE Max	1,8409	0	-14,4827	0	0,1737	0	81,8637
LT 4	B72	440 ENVELOPE Max	2,3045	0	5,4462	0	0,1737	0	89,1506
LT 4	B72	440 ENVELOPE Max	2,7682	0	25,3751	0	0,1737	0	97,6662
LT 4	B72	440 ENVELOPE Max	3,2318	0	46,012	0	0,1737	0	101,4693
LT 4	B72	440 ENVELOPE Max	3,6955	0	70,7036	0	0,1737	0	98,6246
LT 4	B72	440 ENVELOPE Max	4,1591	0	95,3951	0	0,1737	0	97,6526
LT 4	B72	440 ENVELOPE Max	4,6227	0	120,0866	0	0,1737	0	85,2327
LT 4	B72	440 ENVELOPE Max	5,0864	0	142,7122	0	0,1737	0	65,286
LT 4	B72	440 ENVELOPE Max	5,55	0	157,7831	0	0,1737	0	42,6825
LT 4	B72	440 ENVELOPE Min	0,45	0	-171,4034	0	-0,0317	0	-211,9959
LT 4	B72	440 ENVELOPE Min	0,9136	0	-156,3325	0	-0,0317	0	-135,7175
LT 4	B72	440 ENVELOPE Min	1,3773	0	-133,707	0	-0,0317	0	-68,2338
LT 4	B72	440 ENVELOPE Min	1,8409	0	-109,0154	0	-0,0317	0	-18,2683
LT 4	B72	440 ENVELOPE Min	2,3045	0	-84,3239	0	-0,0317	0	21,3592
LT 4	B72	440 ENVELOPE Min	2,7682	0	-59,6324	0	-0,0317	0	34,1923
LT 4	B72	440 ENVELOPE Min	3,2318	0	-35,6489	0	-0,0317	0	36,0244
LT 4	B72	440 ENVELOPE Min	3,6955	0	-15,72	0	-0,0317	0	28,5025
LT 4	B72	440 ENVELOPE Min	4,1591	0	4,2089	0	-0,0317	0	-6,3617
LT 4	B72	440 ENVELOPE Min	4,6227	0	24,1377	0	-0,0317	0	-50,4656
LT 4	B72	440 ENVELOPE Min	5,0864	0	42,314	0	-0,0317	0	-107,3022
LT 4	B72	440 ENVELOPE Min	5,55	0	53,7254	0	-0,0317	0	-177,2657
LT 4	B73	441 ENVELOPE Max	0,45	0	-64,1854	0	-1,1183	0	-2,2296
LT 4	B73	441 ENVELOPE Max	0,9136	0	-56,3836	0	-1,1183	0	28,8226
LT 4	B73	441 ENVELOPE Max	1,3773	0	-42,3605	0	-1,1183	0	52,8858
LT 4	B73	441 ENVELOPE Max	1,8409	0	-22,4316	0	-1,1183	0	73,1273
LT 4	B73	441 ENVELOPE Max	2,3045	0	-2,5027	0	-1,1183	0	84,6015
LT 4	B73	441 ENVELOPE Max	2,7682	0	17,4261	0	-1,1183	0	97,1227
LT 4	B73	441 ENVELOPE Max	3,2318	0	37,355	0	-1,1183	0	106,5738
LT 4	B73	441 ENVELOPE Max	3,6955	0	61,672	0	-1,1183	0	105,9177
LT 4	B73	441 ENVELOPE Max	4,1591	0	86,3636	0	-1,1183	0	108,8282
LT 4	B73	441 ENVELOPE Max	4,6227	0	111,0551	0	-1,1183	0	100,2908
LT 4	B73	441 ENVELOPE Max	5,0864	0	133,6807	0	-1,1183	0	81,7936
LT 4	B73	441 ENVELOPE Max	5,55	0	148,7515	0	-1,1183	0	62,5707

LT 4	B73	441 ENVELOPE Min	0,45	0	-179,7774	0	-3,6179	0	-231,8802
LT 4	B73	441 ENVELOPE Min	0,9136	0	-164,7065	0	-3,6179	0	-151,7193
LT 4	B73	441 ENVELOPE Min	1,3773	0	-142,081	0	-3,6179	0	-80,3531
LT 4	B73	441 ENVELOPE Min	1,8409	0	-117,3894	0	-3,6179	0	-25,4246
LT 4	B73	441 ENVELOPE Min	2,3045	0	-92,6979	0	-3,6179	0	17,5834
LT 4	B73	441 ENVELOPE Min	2,7682	0	-68,0063	0	-3,6179	0	34,0112
LT 4	B73	441 ENVELOPE Min	3,2318	0	-43,3148	0	-3,6179	0	37,0287
LT 4	B73	441 ENVELOPE Min	3,6955	0	-23,0114	0	-3,6179	0	34,8313
LT 4	B73	441 ENVELOPE Min	4,1591	0	-3,0826	0	-3,6179	0	4,4095
LT 4	B73	441 ENVELOPE Min	4,6227	0	16,8463	0	-3,6179	0	-36,009
LT 4	B73	441 ENVELOPE Min	5,0864	0	35,0225	0	-3,6179	0	-86,7273
LT 4	B73	441 ENVELOPE Min	5,55	0	46,7899	0	-3,6179	0	-152,5035
LT 3	B72	528 ENVELOPE Max	0,45	0	-56,3414	0	0,2017	0	36,8902
LT 3	B72	528 ENVELOPE Max	0,9136	0	-44,574	0	0,2017	0	60,5416
LT 3	B72	528 ENVELOPE Max	1,3773	0	-26,3978	0	0,2017	0	77,2039
LT 3	B72	528 ENVELOPE Max	1,8409	0	-6,4689	0	0,2017	0	91,2171
LT 3	B72	528 ENVELOPE Max	2,3045	0	13,4599	0	0,2017	0	94,7552
LT 3	B72	528 ENVELOPE Max	2,7682	0	33,3888	0	0,2017	0	97,7444
LT 3	B72	528 ENVELOPE Max	3,2318	0	54,0977	0	0,2017	0	101,3669
LT 3	B72	528 ENVELOPE Max	3,6955	0	78,7892	0	0,2017	0	103,8297
LT 3	B72	528 ENVELOPE Max	4,1591	0	103,4807	0	0,2017	0	106,3136
LT 3	B72	528 ENVELOPE Max	4,6227	0	128,1723	0	0,2017	0	97,3496
LT 3	B72	528 ENVELOPE Max	5,0864	0	150,7978	0	0,2017	0	81
LT 3	B72	528 ENVELOPE Max	5,55	0	165,8687	0	0,2017	0	61,8858
LT 3	B72	528 ENVELOPE Min	0,45	0	-178,8574	0	-0,0354	0	-230,9823
LT 3	B72	528 ENVELOPE Min	0,9136	0	-163,7865	0	-0,0354	0	-151,248
LT 3	B72	528 ENVELOPE Min	1,3773	0	-141,1609	0	-0,0354	0	-80,3083
LT 3	B72	528 ENVELOPE Min	1,8409	0	-116,4694	0	-0,0354	0	-26,9791
LT 3	B72	528 ENVELOPE Min	2,3045	0	-91,7779	0	-0,0354	0	16,1377
LT 3	B72	528 ENVELOPE Min	2,7682	0	-67,0863	0	-0,0354	0	34,2524
LT 3	B72	528 ENVELOPE Min	3,2318	0	-43,1748	0	-0,0354	0	36,0058
LT 3	B72	528 ENVELOPE Min	3,6955	0	-23,2459	0	-0,0354	0	22,9019
LT 3	B72	528 ENVELOPE Min	4,1591	0	-3,317	0	-0,0354	0	-15,6777
LT 3	B72	528 ENVELOPE Min	4,6227	0	16,6119	0	-0,0354	0	-63,4971
LT 3	B72	528 ENVELOPE Min	5,0864	0	34,7881	0	-0,0354	0	-124,1903
LT 3	B72	528 ENVELOPE Min	5,55	0	46,5555	0	-0,0354	0	-197,9027
LT 3	B73	529 ENVELOPE Max	0,45	0	-63,1076	0	-1,1627	0	20,9876
LT 3	B73	529 ENVELOPE Max	0,9136	0	-51,3403	0	-1,1627	0	47,776
LT 3	B73	529 ENVELOPE Max	1,3773	0	-33,164	0	-1,1627	0	67,5754
LT 3	B73	529 ENVELOPE Max	1,8409	0	-13,2351	0	-1,1627	0	83,6104
LT 3	B73	529 ENVELOPE Max	2,3045	0	6,6937	0	-1,1627	0	90,7525
LT 3	B73	529 ENVELOPE Max	2,7682	0	26,6226	0	-1,1627	0	97,22
LT 3	B73	529 ENVELOPE Max	3,2318	0	46,5515	0	-1,1627	0	105,6587
LT 3	B73	529 ENVELOPE Max	3,6955	0	71,0158	0	-1,1627	0	109,9197
LT 3	B73	529 ENVELOPE Max	4,1591	0	95,7074	0	-1,1627	0	115,7595
LT 3	B73	529 ENVELOPE Max	4,6227	0	120,3989	0	-1,1627	0	110,1515
LT 3	B73	529 ENVELOPE Max	5,0864	0	143,0245	0	-1,1627	0	95,0044
LT 3	B73	529 ENVELOPE Max	5,55	0	158,0953	0	-1,1627	0	78,7792
LT 3	B73	529 ENVELOPE Min	0,45	0	-186,0956	0	-3,6197	0	-248,3838
LT 3	B73	529 ENVELOPE Min	0,9136	0	-171,0247	0	-3,6197	0	-165,2935
LT 3	B73	529 ENVELOPE Min	1,3773	0	-148,3992	0	-3,6197	0	-90,998
LT 3	B73	529 ENVELOPE Min	1,8409	0	-123,7077	0	-3,6197	0	-33,1975
LT 3	B73	529 ENVELOPE Min	2,3045	0	-99,0161	0	-3,6197	0	12,8082
LT 3	B73	529 ENVELOPE Min	2,7682	0	-74,3246	0	-3,6197	0	33,8241
LT 3	B73	529 ENVELOPE Min	3,2318	0	-49,6331	0	-3,6197	0	36,6803
LT 3	B73	529 ENVELOPE Min	3,6955	0	-29,477	0	-3,6197	0	28,9588
LT 3	B73	529 ENVELOPE Min	4,1591	0	-9,5481	0	-3,6197	0	-6,4838
LT 3	B73	529 ENVELOPE Min	4,6227	0	10,3807	0	-3,6197	0	-51,1662
LT 3	B73	529 ENVELOPE Min	5,0864	0	28,557	0	-3,6197	0	-106,569
LT 3	B73	529 ENVELOPE Min	5,55	0	40,3244	0	-3,6197	0	-176,6773
LT 2	B72	616 ENVELOPE Max	0,45	0	-50,827	0	0,2285	0	50,95
LT 2	B72	616 ENVELOPE Max	0,9136	0	-39,0596	0	0,2285	0	72,0447
LT 2	B72	616 ENVELOPE Max	1,3773	0	-20,8834	0	0,2285	0	86,1503
LT 2	B72	616 ENVELOPE Max	1,8409	0	-0,9545	0	0,2285	0	97,7904
LT 2	B72	616 ENVELOPE Max	2,3045	0	18,9744	0	0,2285	0	98,7078
LT 2	B72	616 ENVELOPE Max	2,7682	0	38,9032	0	0,2285	0	97,9197
LT 2	B72	616 ENVELOPE Max	3,2318	0	59,7502	0	0,2285	0	101,2151

LT 2	B72	616 ENVELOPE Max	3,6955	0	84,4417	0	0,2285	0	106,9946
LT 2	B72	616 ENVELOPE Max	4,1591	0	109,1333	0	0,2285	0	111,5616
LT 2	B72	616 ENVELOPE Max	4,6227	0	133,8248	0	0,2285	0	104,6807
LT 2	B72	616 ENVELOPE Max	5,0864	0	156,4504	0	0,2285	0	90,6789
LT 2	B72	616 ENVELOPE Max	5,55	0	171,5212	0	0,2285	0	73,7118
LT 2	B72	616 ENVELOPE Min	0,45	0	-183,3502	0	-0,03	0	-242,3989
LT 2	B72	616 ENVELOPE Min	0,9136	0	-168,2793	0	-0,03	0	-160,5814
LT 2	B72	616 ENVELOPE Min	1,3773	0	-145,6538	0	-0,03	0	-87,5587
LT 2	B72	616 ENVELOPE Min	1,8409	0	-120,9623	0	-0,03	0	-32,3299
LT 2	B72	616 ENVELOPE Min	2,3045	0	-96,2707	0	-0,03	0	12,934
LT 2	B72	616 ENVELOPE Min	2,7682	0	-71,5792	0	-0,03	0	34,3833
LT 2	B72	616 ENVELOPE Min	3,2318	0	-47,8058	0	-0,03	0	35,9854
LT 2	B72	616 ENVELOPE Min	3,6955	0	-27,8769	0	-0,03	0	19,065
LT 2	B72	616 ENVELOPE Min	4,1591	0	-7,948	0	-0,03	0	-22,0714
LT 2	B72	616 ENVELOPE Min	4,6227	0	11,9809	0	-0,03	0	-72,4474
LT 2	B72	616 ENVELOPE Min	5,0864	0	30,1571	0	-0,03	0	-135,9622
LT 2	B72	616 ENVELOPE Min	5,55	0	41,9245	0	-0,03	0	-212,2953
LT 2	B73	617 ENVELOPE Max	0,45	0	-55,7387	0	-1,1194	0	39,6929
LT 2	B73	617 ENVELOPE Max	0,9136	0	-43,9713	0	-1,1194	0	63,0648
LT 2	B73	617 ENVELOPE Max	1,3773	0	-25,795	0	-1,1194	0	79,4477
LT 2	B73	617 ENVELOPE Max	1,8409	0	-5,8662	0	-1,1194	0	92,5693
LT 2	B73	617 ENVELOPE Max	2,3045	0	14,0627	0	-1,1194	0	96,1036
LT 2	B73	617 ENVELOPE Max	2,7682	0	33,9916	0	-1,1194	0	97,9487
LT 2	B73	617 ENVELOPE Max	3,2318	0	54,1057	0	-1,1194	0	104,7335
LT 2	B73	617 ENVELOPE Max	3,6955	0	78,7972	0	-1,1194	0	111,6409
LT 2	B73	617 ENVELOPE Max	4,1591	0	103,4888	0	-1,1194	0	118,6362
LT 2	B73	617 ENVELOPE Max	4,6227	0	128,1803	0	-1,1194	0	114,1835
LT 2	B73	617 ENVELOPE Max	5,0864	0	150,8059	0	-1,1194	0	101,0274
LT 2	B73	617 ENVELOPE Max	5,55	0	165,8767	0	-1,1194	0	86,1487
LT 2	B73	617 ENVELOPE Min	0,45	0	-188,5877	0	-3,47	0	-254,7507
LT 2	B73	617 ENVELOPE Min	0,9136	0	-173,5168	0	-3,47	0	-170,5049
LT 2	B73	617 ENVELOPE Min	1,3773	0	-150,8913	0	-3,47	0	-95,0539
LT 2	B73	617 ENVELOPE Min	1,8409	0	-126,1998	0	-3,47	0	-36,6011
LT 2	B73	617 ENVELOPE Min	2,3045	0	-101,5082	0	-3,47	0	10,7513
LT 2	B73	617 ENVELOPE Min	2,7682	0	-76,8167	0	-3,47	0	34,1089
LT 2	B73	617 ENVELOPE Min	3,2318	0	-52,3104	0	-3,47	0	36,5135
LT 2	B73	617 ENVELOPE Min	3,6955	0	-32,3815	0	-3,47	0	23,7485
LT 2	B73	617 ENVELOPE Min	4,1591	0	-12,4527	0	-3,47	0	-15,1107
LT 2	B73	617 ENVELOPE Min	4,6227	0	7,4762	0	-3,47	0	-63,2095
LT 2	B73	617 ENVELOPE Min	5,0864	0	25,6524	0	-3,47	0	-122,8643
LT 2	B73	617 ENVELOPE Min	5,55	0	37,4198	0	-3,47	0	-196,5804
LT 1	B72	704 ENVELOPE Max	0,45	0	-51,4648	0	0,2372	0	49,3783
LT 1	B72	704 ENVELOPE Max	0,9136	0	-39,6974	0	0,2372	0	70,7687
LT 1	B72	704 ENVELOPE Max	1,3773	0	-21,5212	0	0,2372	0	85,17
LT 1	B72	704 ENVELOPE Max	1,8409	0	-1,5923	0	0,2372	0	97,6271
LT 1	B72	704 ENVELOPE Max	2,3045	0	18,3366	0	0,2372	0	98,6419
LT 1	B72	704 ENVELOPE Max	2,7682	0	38,2655	0	0,2372	0	98,4615
LT 1	B72	704 ENVELOPE Max	3,2318	0	59,54	0	0,2372	0	100,7462
LT 1	B72	704 ENVELOPE Max	3,6955	0	84,2315	0	0,2372	0	104,372
LT 1	B72	704 ENVELOPE Max	4,1591	0	108,923	0	0,2372	0	107,1792
LT 1	B72	704 ENVELOPE Max	4,6227	0	133,6146	0	0,2372	0	98,5385
LT 1	B72	704 ENVELOPE Max	5,0864	0	156,2401	0	0,2372	0	83,6433
LT 1	B72	704 ENVELOPE Max	5,55	0	171,311	0	0,2372	0	65,1146
LT 1	B72	704 ENVELOPE Min	0,45	0	-179,5547	0	-0,0104	0	-232,7033
LT 1	B72	704 ENVELOPE Min	0,9136	0	-164,4838	0	-0,0104	0	-152,6456
LT 1	B72	704 ENVELOPE Min	1,3773	0	-141,8583	0	-0,0104	0	-81,3826
LT 1	B72	704 ENVELOPE Min	1,8409	0	-117,1667	0	-0,0104	0	-28,4349
LT 1	B72	704 ENVELOPE Min	2,3045	0	-92,4752	0	-0,0104	0	15,2675
LT 1	B72	704 ENVELOPE Min	2,7682	0	-67,7837	0	-0,0104	0	34,6781
LT 1	B72	704 ENVELOPE Min	3,2318	0	-44,4378	0	-0,0104	0	35,8122
LT 1	B72	704 ENVELOPE Min	3,6955	0	-24,5089	0	-0,0104	0	19,5631
LT 1	B72	704 ENVELOPE Min	4,1591	0	-4,58	0	-0,0104	0	-21,2775
LT 1	B72	704 ENVELOPE Min	4,6227	0	15,3489	0	-0,0104	0	-71,3579
LT 1	B72	704 ENVELOPE Min	5,0864	0	33,5251	0	-0,0104	0	-135,4432
LT 1	B72	704 ENVELOPE Min	5,55	0	45,2925	0	-0,0104	0	-211,6788
LT 1	B73	705 ENVELOPE Max	0,45	0	-53,7589	0	-1,1333	0	44,8441
LT 1	B73	705 ENVELOPE Max	0,9136	0	-41,9915	0	-1,1333	0	67,298

LT 1	B73	705 ENVELOPE Max	1,3773	0	-23,8153	0	-1,1333	0	82,763
LT 1	B73	705 ENVELOPE Max	1,8409	0	-3,8864	0	-1,1333	0	95,765
LT 1	B73	705 ENVELOPE Max	2,3045	0	16,0425	0	-1,1333	0	98,0511
LT 1	B73	705 ENVELOPE Max	2,7682	0	35,9714	0	-1,1333	0	99,4553
LT 1	B73	705 ENVELOPE Max	3,2318	0	56,7978	0	-1,1333	0	103,4313
LT 1	B73	705 ENVELOPE Max	3,6955	0	81,4894	0	-1,1333	0	107,2474
LT 1	B73	705 ENVELOPE Max	4,1591	0	106,1809	0	-1,1333	0	111,3155
LT 1	B73	705 ENVELOPE Max	4,6227	0	130,8724	0	-1,1333	0	103,9357
LT 1	B73	705 ENVELOPE Max	5,0864	0	153,498	0	-1,1333	0	89,3659
LT 1	B73	705 ENVELOPE Max	5,55	0	168,5689	0	-1,1333	0	71,8903
LT 1	B73	705 ENVELOPE Min	0,45	0	-182,2741	0	-3,4878	0	-238,6536
LT 1	B73	705 ENVELOPE Min	0,9136	0	-167,2033	0	-3,4878	0	-157,3351
LT 1	B73	705 ENVELOPE Min	1,3773	0	-144,5777	0	-3,4878	0	-84,8113
LT 1	B73	705 ENVELOPE Min	1,8409	0	-119,8862	0	-3,4878	0	-30,084
LT 1	B73	705 ENVELOPE Min	2,3045	0	-95,1946	0	-3,4878	0	14,6715
LT 1	B73	705 ENVELOPE Min	2,7682	0	-70,5031	0	-3,4878	0	34,4342
LT 1	B73	705 ENVELOPE Min	3,2318	0	-46,7092	0	-3,4878	0	36,0589
LT 1	B73	705 ENVELOPE Min	3,6955	0	-26,7803	0	-3,4878	0	22,4742
LT 1	B73	705 ENVELOPE Min	4,1591	0	-6,8514	0	-3,4878	0	-17,3028
LT 1	B73	705 ENVELOPE Min	4,6227	0	13,0775	0	-3,4878	0	-66,3196
LT 1	B73	705 ENVELOPE Min	5,0864	0	31,2537	0	-3,4878	0	-128,4059
LT 1	B73	705 ENVELOPE Min	5,55	0	43,0211	0	-3,4878	0	-203,3701
BASE	B72	1006 ENVELOPE Max	0,45	4,6074	17,4004	0,0116	0,055	0,0271	59,4896
BASE	B72	1006 ENVELOPE Max	0,9136	4,6074	18,8807	0,0116	0,055	0,0217	51,079
BASE	B72	1006 ENVELOPE Max	1,3773	4,6074	20,3609	0,0116	0,055	0,0164	41,9821
BASE	B72	1006 ENVELOPE Max	1,8409	4,6074	21,8411	0,0116	0,055	0,011	33,8224
BASE	B72	1006 ENVELOPE Max	2,3045	4,6074	23,3213	0,0116	0,055	0,0057	24,6095
BASE	B72	1006 ENVELOPE Max	2,7682	4,6074	24,8015	0,0116	0,055	0,0003	14,1705
BASE	B72	1006 ENVELOPE Max	3,2318	4,6074	26,2824	0,0116	0,055	0,0015	14,914
BASE	B72	1006 ENVELOPE Max	3,6955	4,6074	27,7127	0,0116	0,055	0,0091	26,7648
BASE	B72	1006 ENVELOPE Max	4,1591	4,6074	31,7715	0,0116	0,055	0,0168	37,3895
BASE	B72	1006 ENVELOPE Max	4,6227	4,6074	34,4161	0,0116	0,055	0,0245	46,788
BASE	B72	1006 ENVELOPE Max	5,0864	4,6074	37,0607	0,0116	0,055	0,0323	55,8777
BASE	B72	1006 ENVELOPE Max	5,55	4,6074	39,7053	0,0116	0,055	0,0402	65,3464
BASE	B72	1006 ENVELOPE Min	0,45	-5,5156	-42,7503	-0,0168	-0,0687	-0,0457	-81,9393
BASE	B72	1006 ENVELOPE Min	0,9136	-5,5156	-40,1057	-0,0168	-0,0687	-0,0379	-62,7318
BASE	B72	1006 ENVELOPE Min	1,3773	-5,5156	-37,4611	-0,0168	-0,0687	-0,0301	-44,7504
BASE	B72	1006 ENVELOPE Min	1,8409	-5,5156	-34,8165	-0,0168	-0,0687	-0,0223	-29,6186
BASE	B72	1006 ENVELOPE Min	2,3045	-5,5156	-32,172	-0,0168	-0,0687	-0,0145	-15,346
BASE	B72	1006 ENVELOPE Min	2,7682	-5,5156	-29,5274	-0,0168	-0,0687	-0,0067	-1,7597
BASE	B72	1006 ENVELOPE Min	3,2318	-5,5156	-27,0835	-0,0168	-0,0687	-0,0054	-1,2683
BASE	B72	1006 ENVELOPE Min	3,6955	-5,5156	-25,6033	-0,0168	-0,0687	-0,0106	-13,7966
BASE	B72	1006 ENVELOPE Min	4,1591	-5,5156	-24,1231	-0,0168	-0,0687	-0,0158	-27,0111
BASE	B72	1006 ENVELOPE Min	4,6227	-5,5156	-22,6429	-0,0168	-0,0687	-0,0211	-40,912
BASE	B72	1006 ENVELOPE Min	5,0864	-5,5156	-21,1627	-0,0168	-0,0687	-0,0265	-56,4164
BASE	B72	1006 ENVELOPE Min	5,55	-5,5156	-19,6825	-0,0168	-0,0687	-0,0318	-74,2122
BASE	B73	1007 ENVELOPE Max	0,45	9,2553	16,111	0,091	0,3551	0,2319	56,0275
BASE	B73	1007 ENVELOPE Max	0,9136	9,2553	17,5913	0,091	0,3551	0,1897	48,2147
BASE	B73	1007 ENVELOPE Max	1,3773	9,2553	19,0715	0,091	0,3551	0,1476	39,7156
BASE	B73	1007 ENVELOPE Max	1,8409	9,2553	20,5517	0,091	0,3551	0,1054	32,0234
BASE	B73	1007 ENVELOPE Max	2,3045	9,2553	22,0319	0,091	0,3551	0,0632	23,4636
BASE	B73	1007 ENVELOPE Max	2,7682	9,2553	23,5121	0,091	0,3551	0,0211	13,6776
BASE	B73	1007 ENVELOPE Max	3,2318	9,2553	25,0739	0,091	0,3551	-0,0047	15,0817
BASE	B73	1007 ENVELOPE Max	3,6955	9,2553	27,7184	0,091	0,3551	-0,0134	27,4795
BASE	B73	1007 ENVELOPE Max	4,1591	9,2553	30,363	0,091	0,3551	-0,0221	38,6512
BASE	B73	1007 ENVELOPE Max	4,6227	9,2553	33,0076	0,091	0,3551	-0,0307	48,5967
BASE	B73	1007 ENVELOPE Max	5,0864	9,2553	35,6522	0,091	0,3551	-0,0394	57,9772
BASE	B73	1007 ENVELOPE Max	5,55	9,2553	38,2968	0,091	0,3551	-0,048	67,9376
BASE	B73	1007 ENVELOPE Min	0,45	-2,5598	-43,9301	0,0187	0,1158	0,0472	-85,0535
BASE	B73	1007 ENVELOPE Min	0,9136	-2,5598	-41,2855	0,0187	0,1158	0,0386	-65,299
BASE	B73	1007 ENVELOPE Min	1,3773	-2,5598	-38,6409	0,0187	0,1158	0,0299	-46,7706
BASE	B73	1007 ENVELOPE Min	1,8409	-2,5598	-35,9963	0,0187	0,1158	0,0212	-30,9615
BASE	B73	1007 ENVELOPE Min	2,3045	-2,5598	-33,3518	0,0187	0,1158	0,0126	-16,1971
BASE	B73	1007 ENVELOPE Min	2,7682	-2,5598	-30,7072	0,0187	0,1158	0,0039	-2,1191
BASE	B73	1007 ENVELOPE Min	3,2318	-2,5598	-28,1442	0,0187	0,1158	-0,0211	-1,1435
BASE	B73	1007 ENVELOPE Min	3,6955	-2,5598	-26,664	0,0187	0,1158	-0,0633	-13,074
BASE	B73	1007 ENVELOPE Min	4,1591	-2,5598	-25,1838	0,0187	0,1158	-0,1055	-25,6907

BASE	B73	1007 ENVELOPE Min	4,6227	-2,5598	-23,7036	0,0187	0,1158	-0,1477	-38,9938
BASE	B73	1007 ENVELOPE Min	5,0864	-2,5598	-22,2234	0,0187	0,1158	-0,1898	-53,6441
BASE	B73	1007 ENVELOPE Min	5,55	-2,5598	-20,7431	0,0187	0,1158	-0,232	-70,7868



TABLE: Column Forces

Story	Column	Unique Name	Load Case/Combo	Station	P	V2	V3	T	M2	M3
LT 6	C41	875	ENVELOPE Max	0	-593,1185	24,8457	46,399	0,5512	85,3829	26,6455
LT 6	C41	875	ENVELOPE Max	1,9	-559,3115	24,8457	46,399	0,5512	9,7452	26,1674
LT 6	C41	875	ENVELOPE Max	3,8	-525,5044	24,8457	46,399	0,5512	99,3841	171,633
LT 6	C41	875	ENVELOPE Min	0	-1425,4367	-81,6077	-50,6692	-0,2404	-94,1677	-143,6259
LT 6	C41	875	ENVELOPE Min	1,9	-1396,4592	-81,6077	-50,6692	-0,2404	-10,4166	-35,2999
LT 6	C41	875	ENVELOPE Min	3,8	-1367,4818	-81,6077	-50,6692	-0,2404	-91,9421	-72,9177
LT 5	C41	813	ENVELOPE Max	0	-1193,6199	51,4578	65,5978	0,8855	129,2623	83,0597
LT 5	C41	813	ENVELOPE Max	1,9	-1154,1783	51,4578	65,5978	0,8855	18,9834	27,0172
LT 5	C41	813	ENVELOPE Max	3,8	-1114,7368	51,4578	65,5978	0,8855	130,4511	162,7088
LT 5	C41	813	ENVELOPE Min	0	-2852,7938	-83,223	-70,8139	-0,7267	-141,6126	-162,2299
LT 5	C41	813	ENVELOPE Min	1,9	-2818,9868	-83,223	-70,8139	-0,7267	-21,4231	-45,8336
LT 5	C41	813	ENVELOPE Min	3,8	-2785,1797	-83,223	-70,8139	-0,7267	-122,9801	-121,1714
LT 4	C41	736	ENVELOPE Max	0	-1796,6946	67,6108	81,4878	1,037	168,4288	127,1604
LT 4	C41	736	ENVELOPE Max	1,9	-1757,2531	67,6108	81,4878	1,037	26,4596	34,1762
LT 4	C41	736	ENVELOPE Max	3,8	-1717,8115	67,6108	81,4878	1,037	152,9506	190,6129
LT 4	C41	736	ENVELOPE Min	0	-4284,7153	-101,662	-87,045	-0,9774	-181,5443	-205,9241
LT 4	C41	736	ENVELOPE Min	1,9	-4250,9082	-101,662	-87,045	-0,9774	-29,0163	-48,2425
LT 4	C41	736	ENVELOPE Min	3,8	-4217,1012	-101,662	-87,045	-0,9774	-144,9487	-139,9818
LT 3	C41	201	ENVELOPE Max	0	-2400,6286	83,31	94,9379	1,1269	201,805	169,4515
LT 3	C41	201	ENVELOPE Max	1,9	-2361,187	83,31	94,9379	1,1269	31,7695	36,5169
LT 3	C41	201	ENVELOPE Max	3,8	-2321,7455	83,31	94,9379	1,1269	170,0464	196,7238
LT 3	C41	201	ENVELOPE Min	0	-5720,4348	-112,2525	-100,4054	-1,1934	-215,0121	-238,8519
LT 3	C41	201	ENVELOPE Min	1,9	-5686,6278	-112,2525	-100,4054	-1,1934	-34,5885	-50,9265
LT 3	C41	201	ENVELOPE Min	3,8	-5652,8207	-112,2525	-100,4054	-1,1934	-162,4771	-156,1427
LT 2	C41	154	ENVELOPE Max	0	-3006,18	95,6336	106,1806	1,1618	239,7389	218,1732
LT 2	C41	154	ENVELOPE Max	1,9	-2966,7385	95,6336	106,1806	1,1618	42,4462	45,2829
LT 2	C41	154	ENVELOPE Max	3,8	-2927,2969	95,6336	106,1806	1,1618	174,2382	179,2249
LT 2	C41	154	ENVELOPE Min	0	-7161,6272	-122,5708	-112,9135	-1,3541	-257,0671	-292,1253
LT 2	C41	154	ENVELOPE Min	1,9	-7127,8201	-122,5708	-112,9135	-1,3541	-46,9818	-68,0542
LT 2	C41	154	ENVELOPE Min	3,8	-7094,0131	-122,5708	-112,9135	-1,3541	-165,9814	-150,8155
LT 1	C41	113	ENVELOPE Max	0	-3614,0596	117,7469	116,1209	1,2766	273,331	308,7573
LT 1	C41	113	ENVELOPE Max	1,65	-3574,9146	117,7469	116,1209	1,2766	83,2639	116,1076
LT 1	C41	113	ENVELOPE Max	3,3	-3535,7696	117,7469	116,1209	1,2766	119,6568	78,2938
LT 1	C41	113	ENVELOPE Min	0	-8611,0314	-126,258	-115,9171	-1,2913	-265,6215	-344,4719
LT 1	C41	113	ENVELOPE Min	1,65	-8577,4785	-126,258	-115,9171	-1,2913	-75,8906	-137,7789
LT 1	C41	113	ENVELOPE Min	3,3	-8543,9257	-126,258	-115,9171	-1,2913	-112,6196	-85,9217
BASE	C41	69	ENVELOPE Max	0	-3743,4647	115,0136	109,207	0,9858	397,7222	431,7386
BASE	C41	69	ENVELOPE Max	0,9	-3722,1128	115,0136	109,207	0,9858	300,0342	328,939
BASE	C41	69	ENVELOPE Max	1,8	-3700,761	115,0136	109,207	0,9858	203,4588	226,8672
BASE	C41	69	ENVELOPE Min	0	-8720,0907	-131,1182	-122,0913	-1,3122	-418,5872	-482,9935
BASE	C41	69	ENVELOPE Min	0,9	-8701,7892	-131,1182	-122,0913	-1,3122	-309,3033	-365,6998
BASE	C41	69	ENVELOPE Min	1,8	-8683,4876	-131,1182	-122,0913	-1,3122	-201,1319	-249,1338

TABLE: Joint Reactions

Story	Joint Label	Unique Name	Load Case/Combo	FX kN	FY kN	FZ kN	MX kN-m	MY kN-m	MZ kN-m
PIT LIFT	39	160	Dead	-1,5979	2,3029	2168,6452	-8,7109	-2,5465	0,0559
PIT LIFT	39	160	Live	-4,42	5,6176	3444,6292	-14,8094	-7,4323	0,0776
PIT LIFT	39	160	Super Dead	-0,328	0,0158	505,2582	-1,592	-0,3107	0,0256
PIT LIFT	39	160	Ex Max	87,2688	4,2684	0,3093	12,012	310,2904	0,496
PIT LIFT	39	160	Ey Max	4,1767	92,8569	6,9673	345,8674	10,0776	0,7165
PIT LIFT	39	160	Comb1	-2,6962	3,2462	3743,4647	-14,4241	-4,0002	0,1141
PIT LIFT	39	160	Comb2	-9,3831	11,7707	8720,0907	-36,0585	-15,3205	0,222
PIT LIFT	39	160	Comb3 Max	108,0653	50,5027	7047,8921	121,8226	396,0284	1,1116
PIT LIFT	39	160	Comb3 Min	-122,0913	-33,0236	7041,6532	-179,1851	-418,5872	-0,7369
PIT LIFT	39	160	Comb4 Max	108,0653	50,5027	7047,8921	121,8226	396,0284	1,1116
PIT LIFT	39	160	Comb4 Min	-122,0913	-33,0236	7041,6532	-179,1851	-418,5872	-0,7369
PIT LIFT	39	160	Comb5 Max	108,0653	50,5027	7047,8921	121,8226	396,0284	1,1116
PIT LIFT	39	160	Comb5 Min	-122,0913	-33,0236	7041,6532	-179,1851	-418,5872	-0,7369
PIT LIFT	39	160	Comb6 Max	108,0653	50,5027	7047,8921	121,8226	396,0284	1,1116
PIT LIFT	39	160	Comb6 Min	-122,0913	-33,0236	7041,6532	-179,1851	-418,5872	-0,7369
PIT LIFT	39	160	Comb7 Max	32,4515	131,1182	7053,9509	425,6311	122,8347	1,3122
PIT LIFT	39	160	Comb7 Min	-46,4775	-113,6391	7035,5945	-482,9935	-145,3935	-0,9375
PIT LIFT	39	160	Comb8 Max	32,4515	131,1182	7053,9509	425,6311	122,8347	1,3122
PIT LIFT	39	160	Comb8 Min	-46,4775	-113,6391	7035,5945	-482,9935	-145,3935	-0,9375
PIT LIFT	39	160	Comb9 Max	32,4515	131,1182	7053,9509	425,6311	122,8347	1,3122
PIT LIFT	39	160	Comb9 Min	-46,4775	-113,6391	7035,5945	-482,9935	-145,3935	-0,9375
PIT LIFT	39	160	Comb10 Max	32,4515	131,1182	7053,9509	425,6311	122,8347	1,3122
PIT LIFT	39	160	Comb10 Min	-46,4775	-113,6391	7035,5945	-482,9935	-145,3935	-0,9375
PIT LIFT	39	160	Comb11 Max	109,207	49,1281	5462,8022	127,9302	397,7222	1,0633
PIT LIFT	39	160	Comb11 Min	-120,9497	-34,3981	5456,5633	-173,0775	-416,8934	-0,7852
PIT LIFT	39	160	Comb12 Max	109,207	49,1281	5462,8022	127,9302	397,7222	1,0633
PIT LIFT	39	160	Comb12 Min	-120,9497	-34,3981	5456,5633	-173,0775	-416,8934	-0,7852
PIT LIFT	39	160	Comb13 Max	109,207	49,1281	5462,8022	127,9302	397,7222	1,0633
PIT LIFT	39	160	Comb13 Min	-120,9497	-34,3981	5456,5633	-173,0775	-416,8934	-0,7852
PIT LIFT	39	160	Comb14 Max	109,207	49,1281	5462,8022	127,9302	397,7222	1,0633
PIT LIFT	39	160	Comb14 Min	-120,9497	-34,3981	5456,5633	-173,0775	-416,8934	-0,7852
PIT LIFT	39	160	Comb15 Max	33,5932	129,7436	5468,861	431,7386	124,5285	1,2639
PIT LIFT	39	160	Comb15 Min	-45,3359	-115,0136	5450,5046	-476,886	-143,6997	-0,9858
PIT LIFT	39	160	Comb16 Max	33,5932	129,7436	5468,861	431,7386	124,5285	1,2639
PIT LIFT	39	160	Comb16 Min	-45,3359	-115,0136	5450,5046	-476,886	-143,6997	-0,9858
PIT LIFT	39	160	Comb17 Max	33,5932	129,7436	5468,861	431,7386	124,5285	1,2639
PIT LIFT	39	160	Comb17 Min	-45,3359	-115,0136	5450,5046	-476,886	-143,6997	-0,9858
PIT LIFT	39	160	Comb18 Max	33,5932	129,7436	5468,861	431,7386	124,5285	1,2639
PIT LIFT	39	160	Comb18 Min	-45,3359	-115,0136	5450,5046	-476,886	-143,6997	-0,9858
PIT LIFT	39	160	ENVELOPE Max	109,207	131,1182	8720,0907	431,7386	397,7222	1,3122
PIT LIFT	39	160	ENVELOPE Min	-122,0913	-115,0136	3743,4647	-482,9935	-418,5872	-0,9858