

By using this website, you agree that EDP Sciences may store web audience measurement cookies

OK

and, on some pages, cookies from social networks. [More information and setup](#)



Journals

Books

Conferences

EDPS Account



E3S Web of Conferences

All issues Series
Forthcoming About

Search Menu



Latest issue

Back issues

E3S Web of Conferences

Open Access proceedings in Environment, Energy and Earth Sciences

E3S Web of Conferences is an Open Access publication series dedicated to archiving conference proceedings in all areas related to Environment, Energy and Earth Sciences. [Read more](#)

Latest issues

Most read articles



Volume 333 (2021)

Regional Problems of Earth Remote Sensing (RPERS 2021)

Volume 332 (2021)

About the journal ▶ Editorial board

About the journal

[Aims and scope](#)

[Editorial board](#)

[Indexed in](#)

[Publishing Policies & Ethics](#)

[Published by](#)

Editorial board

Rachid Bennacer

École Normale Supérieure, Cachan, France
[website](#)

Chérifa Boukacem-Zeghmouri

Université Claude Bernard Lyon 1, Villeurbanne, France
[website](#)

Vladimir Buzek

Slovak Academy of Sciences, Bratislava, Slovakia
[website](#)

Heidi Gautschi

Haute Ecole Pédagogique de Lausanne, Switzerland

Éric Lichtfouse

National Research Institute for Agriculture, Food and Environment (INRAE), Aix-en-Provence, France
[website](#)

Paulo Limão-Vieira

Universidade NOVA de Lisboa, Portugal
[website](#)

Maria S. Madjarska

Max Planck Institute for Solar System Research, Germany

Thierry Maré

Ambassade de France en Indonésie, Jakarta
Université de Rennes 1 /IUT Saint Malo, France
[website](#)

Nigel Mason

University of Kent, Canterbury, United Kingdom

Biswajeet Pradhan

University of Technology Sydney, Australia
website

Jun Sun

Tianjin University of Science and Technology, P.R. China
website

Ming-Jun Zhang

DGUT-CNAM Institute, Dongguan University of Technology, Guangdong Province, P.R. China
website

Zhien Zhang

West Virginia University, Morgantown, West Virginia, USA

E3S Web of Conferences

eISSN: 2267-1242

All issues ▶ Volume 31 (2018)

Previous issue

Table of Contents

Next issue

Free Access to the whole issue

E3S Web of Conferences

Volume 31 (2018)

The 2nd International Conference on Energy, Environmental and Information System (ICENIS 2017)

Semarang, Indonesia, August 15-16, 2017
Hadiyanto, Sudarno and Maryono (Eds.)

Export the citation of the selected articles Export
Select all

Open Access

Statement of Peer review

Published online: 21 February 2018
PDF (64.6 KB)

Open Access

About the conference

Published online: 21 February 2018
PDF (311 KB)

- | | |
|---|--|
| 01. Energy Education, Planning, Conversion and Management | 07. Green Infrastructure and Resilience |
| 02. Renewable Energy | 08. Environmental Conservation |
| 03. Environmental Technology | 09. Environmental Policy, Planning and Education |
| 04. Pollution Control | 10. Industrial Information Systems |
| 05. Waste Management | 11. Smart Information Systems |
| 06. Environmental Health, Toxicology and Epidemiology | 12. Health, Safety and Environment Information Systems |

01. Energy Education, Planning, Conversion and Management



Open Access

CaSO₄ Scale Formation on Vibrated Piping System in the Presence Citric Acid 01001

W. Mangestiyono, J. Jamari, S. Muryanto and A. P. Bayuseno

Published online: 21 February 2018

DOI: <https://doi.org/10.1051/e3sconf/20183101001>

PDF (822 KB) | [References](#) | [NASA ADS Abstract Service](#)

[Open Access](#)

Utilization of Indonesia's Hot Spring Sources for Electricity using Kalina Cycle and Organic Rankine Cycle 01002

Grano Prabumukti and Widodo Wahyu Purwanto

Published online: 21 February 2018

DOI: <https://doi.org/10.1051/e3sconf/20183101002>

PDF (1.11 MB) | [References](#) | [NASA ADS Abstract Service](#)

[Open Access](#)

Managing Campus Energy: Compromising between Rapid Needs and Environmental Requirement 01003

Ambariyanto Ambariyanto, Yos J. Utama and Purwanto

Published online: 21 February 2018

DOI: <https://doi.org/10.1051/e3sconf/20183101003>

PDF (204 KB) | [References](#) | [NASA ADS Abstract Service](#)

[Open Access](#)

Developing Energy Technology Course for Undergraduate Engineering Management Study Program in Lake Toba Area with Particular Focus to Sustainable Energy Systems in Development Context 01004

Yosef Manik, Rizal Sinaga and Hadi Saragi

Published online: 21 February 2018

DOI: <https://doi.org/10.1051/e3sconf/20183101004>

PDF (302 KB) | [References](#) | [NASA ADS Abstract Service](#)

[Open Access](#)

An effect of humid climate on micro structure and chemical component of natural composite (*Boehmeria nivea-Albizia falcata*) based wind turbine blade 01005

S. Sudarsono, P. Purwanto and Johnny W Sudarsono

Published online: 21 February 2018

DOI: <https://doi.org/10.1051/e3sconf/20183101005>

PDF (566 KB) | [References](#) | [NASA ADS Abstract Service](#)

[Open Access](#)

The Effect of Acid Pre-Treatment using Acetic Acid and Nitric Acid in The Production of Biogas from Rice Husk during Solid State Anaerobic Digestion (SS-AD) 01006

Winardi Dwi Nugraha, Syafrudin, Cut Fadhila Keumala, Hashfi Hawali Abdul Matin and Budiyo

Published online: 21 February 2018

DOI: <https://doi.org/10.1051/e3sconf/20183101006>

PDF (431 KB) | [References](#) | [NASA ADS Abstract Service](#)

[Open Access](#)

Using a Fuzzy Light Sensor to Improve the Efficiency of Solar Panels 01007

Suryono Suryono, Jatmiko Endro Suseno, Ainie Khuriati Riza Sulistiati and Tahan Prahara

Published online: 21 February 2018

DOI: <https://doi.org/10.1051/e3sconf/20183101007>

PDF (551 KB) | [References](#) | [NASA ADS Abstract Service](#)

[Open Access](#)

The Increase of Energy Consumption and Carbon Dioxide (CO₂) Emission in Indonesia 01008

Hadi Sasana and Annisa Eka Putri

Published online: 21 February 2018

DOI: <https://doi.org/10.1051/e3sconf/20183101008>

PDF (259 KB) | [References](#) | [NASA ADS Abstract Service](#)

[Open Access](#)

CFD Analysis to Calculate the Optimal Air Velocity in Drying Green Tea Process Using Fluidized Bed Dryer 01009

Eflita Yohana, Afif Prasetya Nugraha, Ade Eva Diana, Ilham Mahawan and Sri Nugroho

Published online: 21 February 2018

DOI: <https://doi.org/10.1051/e3sconf/20183101009>

PDF (525 KB) | [References](#) | [NASA ADS Abstract Service](#)

[Open Access](#)

A Case Study: The Potential of Energy Efficiency in Senior High School of Semarang Regency, Central Java, Indonesia 01010

Ana Yustika, P Purwanto and H Hermawan

Published online: 21 February 2018

DOI: <https://doi.org/10.1051/e3sconf/20183101010>

PDF (306 KB) | [References](#) | [NASA ADS Abstract Service](#)

[Open Access](#)

Compressed Natural Gas Technology for Alternative Fuel Power Plants 01011

Isworo Pujotomo

Published online: 21 February 2018

DOI: <https://doi.org/10.1051/e3sconf/20183101011>

[PDF \(354 KB\)](#) | [References](#) | [NASA ADS Abstract Service](#)



Open Access

Impact of Training and Mentoring Activities Which are Given to The Level of Interest And Capability Industrial Target Group In Adopting SNI ISO 50001 01012

Dwi Apriyanti, Aris Ika Nugrahanto and Sanjaya Shrestha

Published online: 21 February 2018

DOI: <https://doi.org/10.1051/e3sconf/20183101012>

[PDF \(330 KB\)](#) | [References](#) | [NASA ADS Abstract Service](#)

12. Health, Safety and Environment Information Systems

[Open Access](#)

Information Management of Web Application Based Environmental Performance Management in Concentrating Division of PTFI 12001

Arif Susanto and Nur Budi Mulyono

Published online: 21 February 2018

DOI: <https://doi.org/10.1051/e3sconf/20183112001>

PDF (428 KB) | [References](#) | [NASA ADS Abstract Service](#)

[Open Access](#)

Assessment of groundwater recharge potential zone using GIS approach in Purworejo regency, Central Java province, Indonesia 12002

Daniel Eko Aryanto and Gagoek Hardiman

Published online: 21 February 2018

DOI: <https://doi.org/10.1051/e3sconf/20183112002>

PDF (1.38 MB) | [References](#) | [NASA ADS Abstract Service](#)

[Open Access](#)

Assessing the Priority Area of Mountainous Tourism Using Geospatial Approach in Kendal Regency, Central Java 12003

Riwayatningsih and Hartuti Purnaweni

Published online: 21 February 2018

DOI: <https://doi.org/10.1051/e3sconf/20183112003>

PDF (622 KB) | [References](#) | [NASA ADS Abstract Service](#)

[Open Access](#)

The Role of Spatial Analysis in Detecting the Consequence of the Factory Sites : Case Study of Assalaya Factory-Sudan 12004

Amar Sharaf Eldin Khair, Purwanto, Henna RyaSunoko and Omer Adam Abdullah

Published online: 21 February 2018

DOI: <https://doi.org/10.1051/e3sconf/20183112004>

PDF (936 KB) | [References](#) | [NASA ADS Abstract Service](#)

[Open Access](#)

Designing Web-based GIS Application by CSF Method: A Case Study in Boven Digoel Papua 12005

Hendrykus Saritangdan Letsoin, Albertus Joko Santoso and Suyoto

Published online: 21 February 2018

DOI: <https://doi.org/10.1051/e3sconf/20183112005>

PDF (733 KB) | [References](#) | [NASA ADS Abstract Service](#)



The *Decision Making Trial and Evaluation Laboratory (Dematel)* and *Analytic Network Process (ANP)* for *Safety Management System* Evaluation Performance 12006

Lisa Rolita, Bayu Surarso and Rahmat Gernowo

Published online: 21 February 2018

DOI: <https://doi.org/10.1051/e3sconf/20183112006>

PDF (370 KB) | [References](#) | [NASA ADS Abstract Service](#)



Development of Airport Noise Mapping using Matlab Software (Case Study: Adi Soemarmo Airport – Boyolali, Indonesia) 12007

Pertiwi Andarani, Haryono Setiyo Huboyo, Diny Setyanti and Wiwik Budiawan

Published online: 21 February 2018

DOI: <https://doi.org/10.1051/e3sconf/20183112007>

PDF (578 KB) | [References](#) | [NASA ADS Abstract Service](#)



Integration of Remote Sensing Technology Using Sentinel-2A Satellite images For Fertilization and Water Pollution Analysis in Estuaries Inlet of Semarang Eastern Flood Canal 12008

Sawitri Subiyanto, Zainab Ramadhanis and Aditya Hafidh Baktiar

Published online: 21 February 2018

DOI: <https://doi.org/10.1051/e3sconf/20183112008>

PDF (372 KB) | [References](#) | [NASA ADS Abstract Service](#)



Risk Analysis of Coastal Disaster of Semarang City, Indonesia 12009

Sunaryo Sunaryo, Ambariyanto Ambariyanto, Denny Nugroho Sugianto, Muhammad Helmi, Awaluddin Halirin Kaimuddin and Agus Indarjo

Published online: 21 February 2018

DOI: <https://doi.org/10.1051/e3sconf/20183112009>

PDF (284.7 KB) | [References](#) | [NASA ADS Abstract Service](#)



Landslides susceptibility mapping at Gunung Ciremai National Park 12010

Faizin and Bambang Azis Nur

Published online: 21 February 2018

DOI: <https://doi.org/10.1051/e3sconf/20183112010>

PDF (658 KB) | [References](#) | [NASA ADS Abstract Service](#)

Designing Web-based GIS Application by CSF Method: A Case Study in Boven Digoel Papua

Hendrykus Saritangdan Letsoin¹, Albertus Joko Santoso¹, and Suyoto¹

¹Magister Informatics Engineering, Universitas Atma Jaya Yogyakarta, Yogyakarta, Indonesia 55281

Abstract. Since Boven Digoel Regency was established in 2003, to this day its infrastructures are very limited, the region is still not developed, Human Resources (SDM) and Information and Communication Technology are still manual. The development of Geographic Information System was expected to contribute to ICT development in Papua, particularly Boven Digoel Regency, in displaying data of existing local potentials, e.g. tourism, plantation and forestry. Critical Success Factor Method was the right method in considering factors determining the success of the implementation of a strategy, in good information management and in providing data of local potentials of geographic information system for people in Boven Digoel Regency and the people of Indonesia in general to introduce Boven Digoel Regency, Papua. Framework Laravel with PHP programming language was expected to support Geographic Information System well to determine the distribution of local potentials in Boven Digoel Regency..

1 Introduction

As a new government center since 2003, Boven Digoel face several complex issues which are also experienced by newly formed regencies and. The main issue which becomes principle of policy implementation and government management is adjustment of local income (Locally-generated Revenue) and needs which emerge and must be fulfilled especially for the society as a form of public accountability. With the background of being a former prison camp, Boven Digoel is the only region in Papua or even Indonesia which has rapid development, growth and expansion in various sectors. With extensive local potentials, GIS application was made to help getting information to be processed, stored and displayed by location on the application in writing, color, picture and direction. Therefore, GIS application users can easily get information they need.

According to T. A. N. Xiaoshan and S. Yizhong (2010), geographic Information System is very important to get better display and also present map between user and computer. The Geographic Information System (GIS) in this study in synchronized in (GIS) map [1] in assessing a region for different energy potential affected by various technical, topographical and environmental variables. The study by A. Oudin (2017) discussed modeling of different obstacles for the latest energy potentials and result visualization on an interactive map. Geographic Information System (GIS) is used in various regions to assess a location and its situation [2]. According to L. Wang, et.al. (2010), a new geographic information technology application can be demonstrated in government using “Geo-Windows” as the Geographic Information System (GIS) software for E-Government to

be applied in the network [3]. The study by A. V. Vitianingsih and D. Cahyono (2016) state that without adequate road construction, traffic will exceed road volume capacity. It will make roads difficult to pass, causing risk of congestion and traffic accident. This paper will discuss the usage of Geographic Information System (GIS) in analyzing spatial data and attribute data (geoprocessing layers) in mapping accident-prone roads and mapping heavy traffic roads as alternatives for constructing new roads [4]. Geographic Information System (GIS) substantially defied existing method by relational data since the navigational operation of GIS map (e.g. panning, zooming in / out) has their own unique access patterns vastly different from relational equivalents. This study presents an efficient spatial caching framework in handling spatial object adjusted to navigational operational map so that density is visible in the system or GIS application so that application user can travel to their destination [5].

The current development of internet technology, according to, N. Hakim, Maulana and R. Cahyana (2015), is very rapid so everyone should use it to access information, whether via internet media or other social media, e.g. Facebook, Instagram, Youtube, etc. Due to the importance of the information service, Geographic Information System should be developed to help users search social facilities and their specific locations in Garut. Web Modeling Language method is expected to help the development of web engineering which can run in web platform to display existing facilities as required, especially in map [6]. Each region in Indonesia has unique potential that should be analyzed to be considered in national development. Analysis was performed by categorizing data of potentials in Indonesia via PPODES

* Corresponding author: hendrik.letsoin@gmail.com

census, thus consisting of two attributes, i.e. numeric and categorical [7]. In the study by B. T. Nguyen et al (2017) on prediction user movement from historical location data, Movement Predictor application was made to help collect location data from users registered by Global Positioning System (GPS). To analyze various types of feature in comparing three learning models [8]. E-Governance (E-Gov) is generally recognized as an innovation which encourages socio-economic development across the world. Therefore, developed and developing countries continue to try to perform E-Gov projects because they're proven to improve good governance and government services for citizens or society. Developed countries such as Republic of Korea, United States, Singapore, and Denmark have successfully transformed their economies by E-Gov. It's different from countries which have many failed E-Gov projects which didn't develop well [9].

Susanty, et. al. examine the influence of a company on the extent of the assimilation of internet technology into the company's daily operation. The study examined critical success factors adopted by internet technology and the effect of internet technology adoption on company performance [10]. Internet development and current technology offer new opportunities for the government to serve and interact with the public. Previously, E-Government was used to provide better relationship whether from the government or the society. Most governments have realized the importance of ICT and therefore may inhibit the role of E-Government by presenting some challenges by comparing with others, especially developing countries, thus affecting the success rate in E-Government in public service. A study in Kenya to develop success factor and adoption of E-Government from the society's perspective aims to identify factors and challenges to the success of the implementation of E-Government [11]. It's very important to get better understanding on what's effective in government project management and how to manage project effectively, thus clarifying the definition of government project management, effective government project management standard and the effect of success by critical factor in governance model. A questionnaire in China produces a list of success factors affecting the success in governance quantitatively [12]. According to Alfata, Triwiyatno and Isnanto reliable web-based development of monitoring system of online application media to simplify recapitulation and documentation of temperature and humidity, to accelerate web development, there should be web technology application of the framework. In developing the application, LARAVEL MVC framework is used as scripting method [13].

A study by Kainde, Santoso and Budiyanto shows that Bali is famous as a tourism city in some countries across the globe which makes Bali unique as an Indonesian icon. There are many tourism spots famous for diving which are favored by local and foreign tourists. Geographic Information System was developed to map diving locations in Bali [14][15]. Yogyakarta is also special in Java. Every year, tourists visit Yogyakarta during holiday to visit tourism spots, e.g. Borobudur

Temple, so there should be alternative information in searching tourism location, i.e. mobile web-based Case Based Reasoning application, to determine tourist destination [15][14]. A study by Nugraha, et.al shows that internet and smartphone technology development has changed people's behavior in their daily interactions. People more easily ask for and obtain information via mobile device. This study is used to help tourists get location information in Surakarta. The research result shows that tourists easily and quickly get location information in tourism city Surakarta [16].

2 Material and method

Application is run by Framework and method as benchmarks in the current case study.

2.1 Geographic information system of Boven Digoel

Geographic Information System in Boven Digoel Regency was developed to realize the vision and missions of the Regent of Boven Digoel in ICT, particularly by application development by the Department of Communication and Informatics of Boven Digoel Regency. In general, GIS was created by many stages and data, and the reviewed location. The Department of Communication and Informatics of Boven Digoel Regency has worked with an educational institution in Yogyakarta to develop human resources and information technology. As a partner in human resources and information technology development, YOGYA EXECUTIVE SCHOOL "YES" has held various national information technology trainings and human resources development joined by representatives of local government agencies, universities, hospitals, schools, SMEs, NGOs and private companies since 2004.

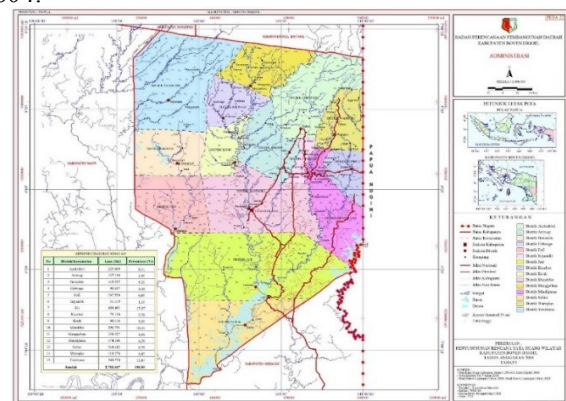


Fig. 1. Geographic Information System of Boven Digoel Regency

(Source : <http://www.bovendigoelkab.go.id/halaman/peta>)

2.2 Critical success factor

The method was Critical Success Factor which is run for Geographic Information System application of descriptive Data of Local Potentials of Boven Digoel Regency, whether tourism, plantation, and forestry potentials in information and location data of the latitude and longitude in the GIS application. This study was performed systematically, factually and accurately based on the case of the development of Geographic Information in Boven Digoel Regency. Critical Success Factor is an analysis method which considers several critical things in the environment to define factors affecting the success.

In the present study, the authors used Critical Success Factors methods to successfully develop geographic information system application of data of local potential of Boven Digoel Regency, especially in information and location, so that the result of the geographic referenced information can display the correct location to fulfill the needs for local information of Boven Digoel Regency.

2.3 Laravel

According to Komara, et. Al. developing generic software application built on web dynamic is complex and expensive because programmer must focus on certain platform, technology and architecture. The programmer should understand the behavior and environment of each platform, technology and architecture. This study was aimed to produce generic pattern generator for web dynamic application for three web dynamic platforms: Java EE, .NET, PHP.

We used MVC (Model-View-Controller) architecture to develop generic pattern. Every layer of MVC was analyzed by their special technology. The explored technologies were: layer view, Java, PHP [17]. Traditional framework design method to design web has many limitations, take a long time, etc. Therefore, this paper presents design and implementation of a web method based on LARAVEL framework. LARAVEL makes standard development process, processes several automatic non-business logical relations. This paper designed and implemented simple LARAVEL model which achieved automatic processing for part of the design, experimental and proven simulation, web design based on LARAVEL framework [18]. Parkar et al (2016) states that in today's era, Internet is widely known. Today, most business processes are online. Companies prefer to send job vacancies in their websites and receive CVs from qualified candidates. Millions of people post their CVs on the websites. The task of selecting and verifying the CVs are difficult, time consuming, and inaccurate. Therefore, computerization should be considered. In this system, a model or tool extracts information required from qualified candidates. The proposed model uses searching and sorting algorithms [19], evaluating procedure and PHP performance by CodeIgniter and LARAVEL framework. The study was performed because there is a lack of comparison between popular PHP frameworks such as

LARAVEL, codeigniter by php. The results are analyzed and interpreted to expose the performance of the target frameworks [20]. According to Verma View controller (MVC) is architecture in standard design pattern used in website design or web application development. It classifies software applications into three interconnected parts so internal information is separated by information presented or received from users. The main component of the model consists of application data, business rule, logics and functions. The view would be information representation output, such as graph or diagram. Some views of the same information is possible, such as bar chart for management and table interface. The third part, controller, receives input and converts into command for MVC model of LARAVEL Framework which uses PHP programming language [21].

Developing a good application required some tools for support in developing Geographic Information System of data of local potentials of Boven Digoel Regency, whether tourism, plantation, or forestry potential. The framework was Laravel. The programming language was PHP hypertext preprocessor. The model, view and controller of each function are:

- Model
The model serves to store data based on a list of name from database as required. The names which are used will be stored and processed by the system to call between view and controller consistent with application user's input.
- View
The model serves to display HTML of web. As a service for user, view should be designed well to present information for users in terms of color, font, video or picture stored in database.
- Controller
So that application can run in accordance with the procedure, controller function is used. If user wants to display the geography of a tourism potential, the system will display it by calling model and view from database and web interface in HTML.

2.4 Flowchart system

As contribution for the authors, data of local potentials are displayed in the developed geographic information system application consistent with the data from the Department of Communication and Informatics of Boven Digoel Regency. This application is based on web in general, providing information to users on data of tourism, plantation and forestry potentials, and the location of the potential. The method was expected to be suitable with the target of the success of the application in promoting its data content and application in the appropriate interface and location so that user can understand the location as an illustration. Figure 2 shows three existing potentials and each of them has different data content consistent with existing potentials in Boven Digoel Regency.

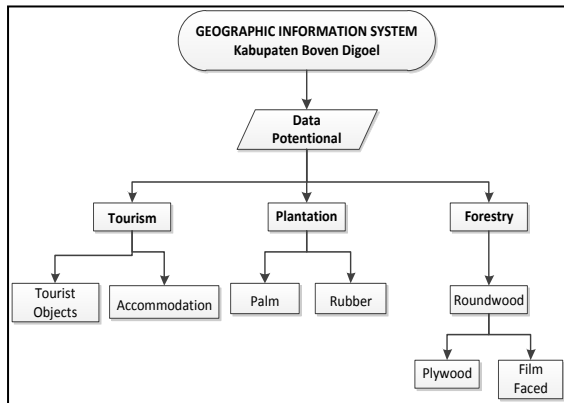


Fig. 2. Flowchart System

2.5 Use case Diagram

In this study, the authors' contribution in developing web-based application of data of local potentials is expected to run and be used by users. The system homepage of the application shows web home, tourism, plantation and tourism which contain information on existing potentials and their locations. For management, the application provides a database to store input data in the application so the data managed by the administrator is up to date.

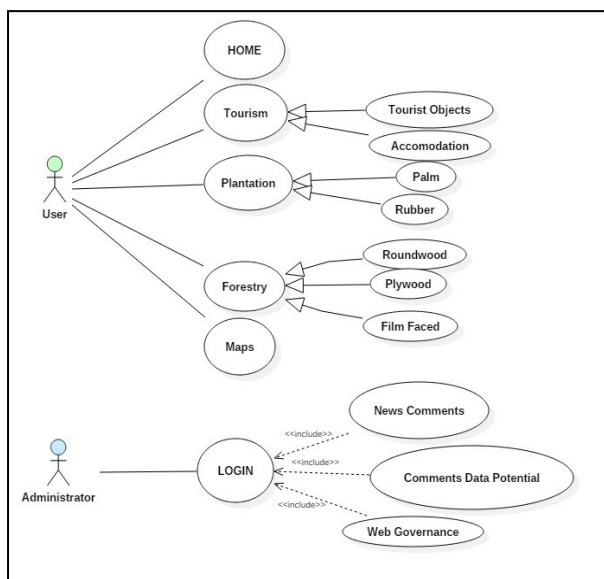


Fig. 3. Use case Diagram

2.5 Application architecture

In the architecture of the geographic information system, user can access the website by internet to get information and location. The displayed information is consistent with the data in the database managed by the administrator, so the data is appropriate for user and is published with corresponding and interesting domain. Application can be used using cellphone and computer as required.

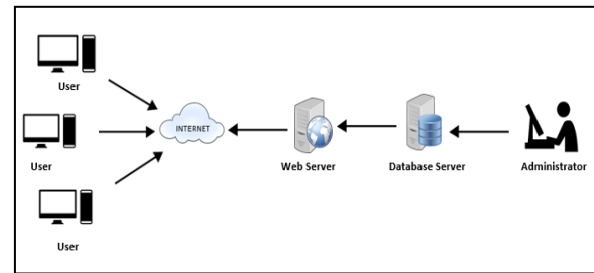


Fig. 4. Application Architecture

3 Result and discussion

The web-based geographic information system of data of local potentials of Boven Digoel Regency displays the homepage as the master, tourism objects as references and accommodation as details of tourism potential. The list in the menu bar contains 6 functions of each interface which shows information on the target vision and missions, gallery, map, archive, and contact. The geographic information system application uses CMS Content Management System function so that the display in the website contents of the geographic information system shows header, content and footer.

The header shows the logo and text of the Department of Communication and Informatics along with the motto of Boven Digoel Regency. The menu bar in the application has profile for information on the Department of Communication and Informatics, the government to show this vision and missions of Boven Digoel Regency related to the Department of Communication and Informatics of Boven Digoel, gallery to store pictures related with local potentials, whether tourism, plantation, or forestry. The gallery contains pictures and videos. Map displays the locations of existing potentials by location, archive displays news on local development, especially local potentials. The news are based on data stored in the database which is managed by administrator.

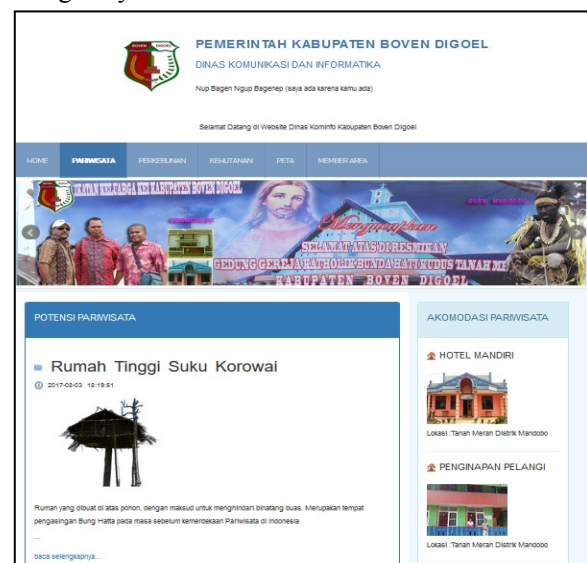


Fig. 5. Tourist Objects Interface

This page displays tourism object. Every region has its own tourism objects. Boven Digoel Regency has unique tourism objects to visit. The regency is known to be a location for exile during Dutch colonization. The Proclamator was exiled in Tanah Merah city which is now known as Boven Digoel prison. The webpage in the application provides.



Fig. 5. Accommodation Interface

The accommodation interface displays hospitality services for tourists visiting Boven Digoel Regency as one of Indonesia’s historical cities. This interface shows some accommodations services, e.g. hotel, motel, guesthouse etc. and displays gallery of the accommodations, as well as their locations. The information is shown as the information function of accommodation service.

Table 1. Accommodation in Boven Digoel Regency.

Business	Classification	Location	
		Lat.	Longi.
Idaman	Hotel	-6.1091481	140.324523
Mandiri	Hotel	-6.097116	140.304465
Boven Jaya	Lodging	-6,100487	140.309521
Pelangi	Lodging	-6.100871	140.303006
Ramayana	Losmen	-6.102172	140.306209

To support tourism and other activities in Boven Digoel Regency, there are some businesses which provide accommodation services. Some accommodation business services in Boven Digoel Regency are shown in the following table 1.

It is can be seen on tabel 2, that beside historical sites, Boven Digoel also has other tourist destinations, i.e. cultural, natural and religious tourist destination

Table 2. Objec Tourism in Boven Digoel Regency.

Tourist Objects	Kind of Tourism Object	Area	Location	
			Lat	Longi
Korowai Tribe’s High House	Culture	Distrik Yaniruma	-5.328406	139.823793
Boven Digoel’s Jail	Historical sites	Distrik Mandobo	-6.101513	140.299922
Pesta Ulat Sagu	Culture	Mindiptana	-6.013390	140.639266
Gua Maria	Religy tourism	Distrik Mandobo	-6.103926	140.312294

Table 3. Plantation crop potentials in Boven Digoel Regency

Plants	Area Of Land	Rubber Product	Year	Location	
				Lat	Longi
Rubber	1.813 ha	190 ton	2009	-6.421219	140.432360
	1.913 ha	220.07 ton	2010		
	2.127 ha	273.69 ton	2011		
	2.616 ha	430.92 ton	2012		
	2.811 ha	383.34 ton	2013		

The plantation are dominated by rubber and palm oil. Rubber is people’s plantation crops as most people in Boven Digoel Regency cultivate this plant, while palm oil is a large plantation crop managed by companies.

Table 4. The area for palm oil

Plants	Area Of Land	Palm Product	Year	Location	
				Lat	Longi
Palm	17.268 ha	22.842 ton	2009	-6.602175	140.501538
	17.268 ha	21.729 ton	2010		
	17.596 ha	42.307 ton	2011		
	17.648 ha	32.536 ton	2012		
	17.715 ha	40.197 ton	2013		

It can be seen in tabel 4 that the area for pal oil managed by major companies keeps increasing every year. In 2004, the area was 9.608 hectares, then in 2005 and 2006 it became 10.408 hectares.

Table 5. Product Timber Yearly in Boyen Digoel Regenct

Company	Round Timber Product	Year	Location	
			Lat	Longi
IUPHHK & IPK	264,322.71	2009	-6.646954	140.7669763
	295,484.61	2010		
	275,617.19	2011		
	221,638.99	2012		
	121,310,01	2013		

And the top table is Boven Digoel Regency has large forest with various forest products which can be processed, increasing local income. One of the leading forest commodities is round wood. Below is a figure of the growth of round wood products by IUPHHK and IPK companies. The production of year to year increasing, caused by the businesses producing from the company except in 2013 experience reduction.

Table 6. Forest product yearly

Forest Product	Company	Sales Volume	Year
Plywood & Film Faced	IUPHHK & IPK	45600	2009
		89200	
		74513.19	2010
		51039.86	
		40701.8	2011
		120881.13	
		38107.56	2012
		97760.79	
		47174.85	2013
		87555.11	

Some forest products are processed and sold abroad, i.e. Plywood and Film Faced. Both forest products started to be sold abroad in 2007 and the sales volumes are shown in the table. In 2007, the sales volume of Plywood abroad was 72.607,01 m³, then declined in 2008 to 45.588,18 m³.

The present study only displays data of tourism potentials as an example of application interface developed to contribute to the Department of Communication and Informatics of Boven Digoel Regency in developing local development applications for the general public and the people of Boven Digoel. The geographic information system is expected to run and be used.

4 Conclusion

The developed application design used Critical Success Factors method to clearly direct the success of geographic information system in displaying the data of potentials as local information, location and promotion for application users to attract people by information on the local potentials of Boven Digoel which is the main objective of the website application. The web-based geographic information system displays information data based on original data from the department of Communication and Informatics of Boven Digoel Regency. Boven Digoel Regency has many local potentials, i.e. agriculture, fishery, mining, and farming. In the present study, the authors only used the data of tourism, plantation and forestry potentials as contribution. It's expected that in the future all existing potentials can be inserted in the web-based geographic information system to be better and usable.

References

1. T. A. N. Xiaoshan and S. Yizhong, no. 40771164, pp. 183–186, (2010).
2. A. Oudin, D. Sprake, Y. Vagapov, and O. Simonova, pp. 513–517, (2017).
3. L. Wang, Y. Wang, Y. Li, A. Qiu, and K. Tao, 2010 Int. Conf. Web Inf. Syst. Min., pp. 138–142, (2010).
4. A. V. Vitianingsih and D. Cahyono, pp. 0–4, (2016).
5. M. R. Vieira, P. Bakalov, E. Hoel, and V. J. Tsotras, pp. 89–98, (2012).
6. N. Hakim, Maulana and R. Cahyana, J. Algoritm., pp. 1–7, (2015).
7. H. Prasetyo and A. Purwarianti, 2014 *Int. Conf. Inf. Technol. Syst. Innov.* ICITSI 2014 - Proc., no. November, pp. 13–18, (2014).
8. B. T. Nguyen, N. V Nguyen, N. T. Nguyen, and M. H. T. Tran, *Seventh Int. Conf. Inf. Sci. Technol.*, pp. 1–6, (2017).
9. S. Hatsu and E. K. Ngassam, pp. 1–8, (2015).
10. A. Susanty, D. P. Sari, and D. Anastasia, 2016 *2nd Int. Conf. Sci. Inf. Technol.*, pp. 35–40, (2016).
11. I. Otieno and E. Omwenga, pp. 1–9, (2015).
12. W. Xiang, Y. Li, and Y. Shou, no. 71072119, pp. 405–409, (2013).
13. L. Alfat, A. Triwiyatno, and R. R. Isnanto, ICITACEE 2015 - *2nd Int. Conf. Inf. Technol. Comput. Electr. Eng. Green Technol. Strength.* Inf. Technol. Electr. Comput. Eng. Implementation, Proc., pp. 46–51, (2016).
14. H. V. F. Kainde, A. J. Santoso, and D. Budiyanto, J. Sist. dan Inform., vol. **11**, no. 1, pp. 173–180, (2017).
15. E. K. Dewi, Suyoto, and K. Anindito, *Journal in Indonesian*, vol. **20**, no. semnasIF, pp. 33–40, (2012).
16. B. Nugraha, Nur, Suyoto, and Pranowo, “*Mobile Application Development For Smart Tourist Guide*,” pp. 2475–2481, (2017).
17. H. Komara, B. Hendradja, and P. Saptawati, pp. 1–5, (2016).
18. H. E. R. E. N. Yu, *Int. Conf. Comput. Sci. Electron. Technol. (ICCSET 2014)*, no. Iccset 2014, pp. 301–304, (2015).
19. V. V Parkar, P. P. Shinde, S. C. Gadade, and P. M. Shinde, *IOSR J. Comput. Eng.*, pp. 36–41, (2016).
20. R. Das and L. P. Saikia, *Int. J. Curr. Trends Eng. Res.*, vol. **2**, no. 6, pp. 42–48, (2016).
21. A. Verma, *Indian J. Comput. Sci. Eng.*, vol. **5**, no. 5, pp. 196–198, 2014.