

BAB III

KESIMPULAN

3.1. Praktik Perancangan Bangunan Gedung

Dari perhitungan pada bab sebelumnya, dapat disimpulkan dalam beberapa poin dibawah ini.

1. Atap baja menggunakan gording profil C 150 x 50 x 20 x 3,2 dan kuda-kuda 2L 50 x 50 x 5.
2. Pelat lantai dengan tebal 120 mm menggunakan tulangan tumpuan P10-150 serta tulangan susut P8-200.
3. Pelat tangga dan bordes direncanakan dengan tebal 130 mm dengan tulangan tumpuan dan lapangan D16-150 serta tulangan susut P8-150. Balok bordes berukuran 250 x 450 dengan tulangan tumpuan dan lapangan 3D16 serta sengkang 2P10-200.
4. Perhitungan penulangan balok dimensi 300 x 500 dengan tulangan tumpuan 7D16 dan tulangan lapangan 4D16 serta tulangan transversal 2P10-200.
5. Perhitungan penulangan kolom dimensi 500 x 500 mm menggunakan tulangan longitudinal 12D25 dengan tulangan transversal 2P10-200.
6. Fondasi telapak dimensi 2600 x 2600 x 500 mm dengan tulangan bawah D16-200 serta tulangan susut D12-100.

3.2. Praktik Perancangan Jalan

Dari hasil analisis data yang diperoleh dapat ditarik beberapa kesimpulan

3.2.1 Moving Car Observe

Berdasarkan data dari hasil survei/observasi yang dilakukan, terdapat perbedaan kecepatan dan arus kendaraan dari masing-masing arah. Dimana dalam perhitungan sederhana, kendaraan observator/peneliti berkecepatan 30 km/jam, sedangkan kecepatan rata-rata kendaraan yang diobservasi terdapat 2 perbedaan.

1. Kendaraan dari Jl. Selokan Mataram No.41 - Jl. Selokan Mataram No. 418. memiliki kecepatan sebesar 26,1467 km/jam dan Kendaraan dari arah berlawanan memiliki kecepatan sebesar 26,3281 km/jam. Jadi kecepatan rata-rata kedua arah sebesar 26,2374 km/jam.

2. Kendaraan dari Jl. Selokan Mataram No.41 - Jl. Selokan Mataram No. 418. memiliki arus sebesar 926,369 kend/jam dan Kendaraan dari arah berlawanan memiliki arus sebesar 870,1786 km/jam. Jadi arus rata-rata kedua arah sebesar 898,2738 km/jam.

3.2.2 Simpang Bersinyal

1. Volume Lalu Lintas dari arah Timur = 1382 smp/jam
Volume Lalu Lintas dari arah Selatan = 702 smp/jam
Volume Lalu Lintas dari arah Barat = 1384 smp/jam
2. Nilai $y = 0,739$ memenuhi syarat karena lebih kecil dari 0,8
3. Lamanya waktu hijau aktual tiap fase
Fase Utara = 34 detik Fase Barat = 14 detik Fase Timur = 34 detik

3.2.3 Parkir

Dari hasil observasi yang telah penulis lakukan maka didapat kesimpulan Fasilitas parkir dirasa sudah cukup memberikan rasa aman dan nyaman bagi pengguna karena jumlah ruang yang dibutuhkan yang relatif kecil.

3.2.4 Fasilitas Pejalan Kaki

Lebar ideal untuk trotoar di ruas Simpang Gramedia, Yogyakarta adalah 1,5 m. Sementara jika mengacu pada Standar Design Trotoar menurut Keputusan Menteri Perhubungan No. KM 65 tahun 1993, lebar ideal untuk trotoar tersebut adalah 1,5m – 2,3 m. Untuk fasilitas penyeberangan sendiri sudah sangat memadai, dengan adanya *zebracross*.

3.2.5 Kebisingan Akibat Lalu Lintas

Dari hasil observasi yang telah penulis lakukan maka didapat kesimpulan sebagai berikut :

1. Tingkat kebisingan area kampus 1 UAJY masih memenuhi syarat tingkat kebisingan untuk kawasan sekolah yakni sebesar 55 dBA
2. Tingkat kebisingan didalan kampus semakin kecil karena faktor reduksi yang semakin banyak dengan memperhitungkan kerimbunan pohon dan tembok penghalang berupa beton bertulang.

3.3. Praktik Perancangan Bangunan Air

Dari perhitungan pada bab sebelumnya, dapat disimpulkan dalam beberapa poin dibawah ini.

1. Luas dari masing-masing stasiun hujan yaitu, Kemput 7,19 km², Bronggang 47,81 km², Tanjungtirto 23,88 km² dan Prumpung 0,81 km²
2. Debit banjir rancangan yang digunakan yaitu periode 100 tahun (Q_{100}) adalah 102,2347 m³/detik. Hasil debit andalan 80% yaitu sebesar 2.49 m³/tahun
3. Tipe bendung yaitu bendung tetap bertingkat dengan badan bendung dari beton. Tipe puncak bendung yaitu bulat, tipe kolam olak USBR Tipe III.
4. Bendung yang telah direncanakan aman terhadap gaya geser, guling, angkat, gempa, dan rembesan.

3.4. Praktik Perencanaan Biaya dan Waktu

Dari hasil perhitungan data yang telah dijabarkan, dapat diketahui perkiraan kebutuhan biaya untuk membangun kampus dengan menggunakan harga satuan dari Kota Kupang adalah sebesar Rp 39.844.572.748 biaya tersebut sudah termasuk keuntungan dan pajak sebesar 5 %. Untuk harga asli dari rekapitulasi data proyek adalah Rp. Rp 27.708.368.088 (Pembangunan pada tahun 2015). Durasi pekerjaan yang diberikan lebih lama 133 hari atau 19 minggu dari durasi proyek yang asli, maka ada beberapa sub pekerjaan yang penulis rancang kembali durasinya diperpanjang agar mengurangi terjadinya *Critical Path* (CP) atau juga disebut suatu jalur kegiatan yang sangat kritis, tidak boleh ada keterlambatan karena merupakan jalur kritis. Beberapa sub pekerjaan yang diperpanjang durasinya adalah pekerjaan struktur beton pada balok pelat dan kolom, juga pekerjaan arsitektur seperti pemasangan bata dan plesteran.

DAFTAR PUSTAKA

- SNI 1727:2013 (2013). *Beban Minimum untuk Perancangan Bangunan Gedung dan Struktur Lain*. Badan Standarisasi Nasional Indonesia.
- SNI 1729:2015 (2015). *Spesifikasi untuk Bangunan Gedung Baja Struktural*. Badan Standarisasi Nasional Indonesia.
- SNI 2847:2013 (2013). *Tata Cara Perhitungan Struktur Beton Bangunan Gedung*. Badan Standarisasi Nasional Indonesia.
- SNI 1726:2012 (2012). *Tata Cara Perencanaan Ketahanan Gempa untuk Struktur Bangunan Gedung dan Non Gedung*. Badan Standarisasi Nasional Indonesia.
- Wells & Warpani (1993). *Rekayasa Lalu Lintas*. Jakarta: Bhratara.
- Triatmodjo (2008). *Hidrologi Terapan*. Yogyakarta: Beta Offset.
- Departement Pekerjaan Umum. 1990. *Tata Cara Perencanaan Umum Bendung*. Yayasan Badan Penerbit Pekerjaan Umum: Jakarta,
- Departement Pekerjaan Umum. 1986. *Kriteria Perencanaan 02*. Galang Persada: Bandung.
- Departement Pekerjaan Umum. 1986. *Kriteria Perencanaan 04*. Galang Persada: Bandung.
- Departement Pekerjaan Umum. 1986. *Kriteria Perencanaan 06*. Galang Persada: Bandung.
- Mawardi dan Memed. 2002. *Desain Hidraulik Bendung Tetap untuk Irigasi Teknis*. Alfabeta: Bandung. 2002.
- Soewarno. 1995. *Analisis Metode Statistik untuk Analisa Data*.
- SNI 2019. *Tabel Analisis Harga Satuan Pekerjaan*. Badan Standarisasi Nasional Indonesia.



LAMPIRAN

Output ETABS akibat gaya gempa

TABLE: Diaphragm Center of Mass Displacements					
Story	Diaphragm	Load Case/Combo	UX	UY	RZ
			m	m	rad
Story4	D1	D	0.000097	0.000081	-0.000019
Story4	D1	L	0.000003	0.000209	-0.000026
Story4	D1	SD	-0.000023	0.000282	-0.000035
Story4	D1	Ex Max	0.023941	-0.000105	-0.000098
Story4	D1	Ex Min	0.023941	-0.000105	-0.000098
Story4	D1	Ey Max	0.00029	0.026185	0.000829
Story4	D1	Ey Min	0.00029	0.026185	0.000829
Story4	D1	Comb1	0.000104	0.000508	-0.000076
Story4	D1	Comb2	0.000095	0.00077	-0.000106
Story4	D1	Comb3	0.024037	0.000558	-0.000191
Story4	D1	Comb4	-0.023844	0.000767	0.000004
Story4	D1	Comb5	0.000386 -	0.026847	0.000735 -
Story4	D1	Comb6	0.000193	-0.025522	0.000922
Story4	D1	Comb7	0.024004	0.000203	-0.000144
Story4	D1	Comb8	-0.023877	0.000413	0.000052
Story4	D1	Comb9	0.000353	0.026493	0.000783
Story4	D1	Comb10	-0.000227	-0.025877	-0.000875
Story3	D2	D	0.00006	0.00006	-0.000013
Story3	D2	L	0.000001	0.000151	-0.000018
Story3	D2	SD	-0.000018	0.000203	-0.000025
Story3	D2	Ex Max	0.020722	-0.000096	-0.00009
Story3	D2	Ex Min	0.020722	-0.000096	-0.00009
Story3	D2	Ey Max	0.000229	0.022661	0.000718
Story3	D2	Ey Min	0.000229	0.022661	0.000718
Story3	D2	Comb1	0.000059	0.000368	-0.000053
Story3	D2	Comb2	0.000051	0.000558	-0.000074
Story3	D2	Comb3	0.020775	0.000384	-0.000155
Story3	D2	Comb4	-0.02067	0.000576	0.000025
Story3	D2 D2	Comb5	0.000282 -	0.023141	0.000652 -
Story3		Comb6	0.000176	-0.022181	0.000783
Story3	D2	Comb7	0.020758	0.000128	-0.000122
Story3	D2	Comb8	-0.020687	0.000319	0.000058
Story3	D2	Comb9	0.000264	0.022885	0.000686
Story3	D2	Comb10	-0.000193	-0.022438	-0.000749
Story2	D3	D	0.000027	0.000039	-0.000007
Story2	D3	L	-0.000003	0.000094	-0.000011
Story2	D3	SD	-0.000016	0.000126	-0.000014
Story2	D3	Ex Max	0.015529	-0.000088	-0.000083

Story2	D3	Ex Min	0.015529	-0.000088	-0.000083
Story2	D3	Ey Max	0.000153	0.01692	0.000535
Story2	D3	Ey Min	0.000153	0.01692	0.000535

Story2	D3	Comb1	0.000015	0.00023	-0.00003
Story2	D3	Comb2	0.000009	0.000348	-0.000043
Story2	D3	Comb3	0.01554	0.000212	-0.000121
Story2	D3	Comb4	-0.015518	0.000388	0.000045
Story2	D3	Comb5	0.000164 -	0.01722	0.000498 -
Story2	D3	Comb6	0.000142	-0.016621	0.000573
Story2	D3	Comb7	0.015538	0.000052	-0.000101
Story2	D3	Comb8	-0.01552	0.000228	0.000065
Story2	D3	Comb9	0.000162	0.01706	0.000517
Story2	D3	Comb10	-0.000144	-0.01678	-0.000554
Story1	D4	D	0.000011	0.000017	-0.000003
Story1	D4	L	-0.000001	0.000041	-0.000005
Story1	D4	SD	-0.000007	0.000054	-0.000006
Story1	D4	Ex Max	0.010042	-0.00007	-0.000066
Story1	D4	Ex Min	0.010042	-0.00007	-0.000066
Story1	D4	Ey Max	0.00009	0.011028	0.000348
Story1	D4	Ey Min	0.00009	0.011028	0.000348
Story1	D4	Comb1	0.000005	0.000099	-0.000013
Story1	D4	Comb2	0.000002	0.000151	-0.000018
Story1	D4	Comb3	0.010045	0.00006	-0.000082
Story1	D4	Comb4	-0.010038	0.000199	0.00005
Story1	D4	Comb5	0.000094 -	0.011158	0.000332 -
Story1	D4	Comb6	0.000087	-0.010898	0.000363
Story1	D4	Comb7	0.010045	-0.000009	-0.000073
Story1	D4	Comb8	-0.010038	0.00013	0.000058
Story1	D4	Comb9	0.000094	0.011089	0.00034
Story1	D4	Comb10	-0.000087	-0.010968	-0.000355

Output ETABS pada balok

TABLE: Beam Forces						
Story	Beam	Load Case/ Combo	V2 kN	V3 kN	M2 kN-m	M3 kN-m
Story1	B17	Comb10	-78.9318	0	0	-134.4127
Story1	B15	Comb10	-87.3335	0	0	-132.7911
Story1	B14	Comb10	-89.4756	0	0	-129.1191
Story1	B16	Comb10	-80.3726	0	0	-127.8686
Story1	B13	Comb10	-81.2686	0	0	-117.6454
Story1	B15	Comb5	132.9341	0	0	-166.7466

Story1	B14	Comb5	129.1302	0	0	-166.4267
Story1	B13	Comb5	127.8321	0	0	-155.0181
Story1	B16	Comb5	105.2953	0	0	-154.5142
Story1	B17	Comb5	107.7364	0	0	-150.3982
Story2	B14	Comb5	123.2324	0	0	-150.3101
Story2	B15	Comb5	124.0409	0	0	-146.377
Story1	B38	Comb5	111.9695	0	0	-142.6818
Story2	B13	Comb5	120.0615	0	0	-137.1947
Story2	B16	Comb5	98.0465	0	0	-134.7472
Story2	B38	Comb5	107.4358	0	0	-130.3253
Story3	B15	Comb5	117.433	0	0	-129.1157
Story2	B17	Comb5	98.2652	0	0	-128.7131
Story3	B14	Comb5	112.4804	0	0	-124.6117
Story3	B13	Comb5	115.0865	0	0	-124.4243
Story1	B11	Comb5	94.942	0	0	-121.173
Story1	B14	Comb6	-131.789	0	0	-163.9998
Story1	B15	Comb6	-127.9871	0	0	-163.4618
Story1	B17	Comb6	-104.8672	0	0	-153.3935
Story1	B37	Comb6	-137.5366	0	0	-151.0026
Story1	B16	Comb6	-107.3085	0	0	-149.379
Story1	B13	Comb6	-121.5983	0	0	-147.8345
Story2	B15	Comb6	-121.8831	0	0	-146.794
Story2	B14	Comb6	-122.6985	0	0	-143.1676
Story2	B13	Comb6	-116.7996	0	0	-134.4822
Story2	B17	Comb6	-97.6386	0	0	-133.6792
Story2	B37	Comb6	-128.8975	0	0	-132.8401
Story2	B16	Comb6	-97.8579	0	0	-127.7432
Story3	B14	Comb6	-116.3226	0	0	-126.4739
Story1	B35	Comb6	-125.0807	0	0	-126.1152
Story3	B15	Comb6	-111.3705	0	0	-121.6046
Story3	B37	Comb6	-122.4593	0	0	-118.2949
Story1	B16	Comb9	79.1153	0	0	-134.8935
Story1	B14	Comb9	87.8635	0	0	-134.1626
Story1	B15	Comb9	90.0077	0	0	-130.3939
Story1	B17	Comb9	80.5559	0	0	-128.3047

Output ETABS pada kolom

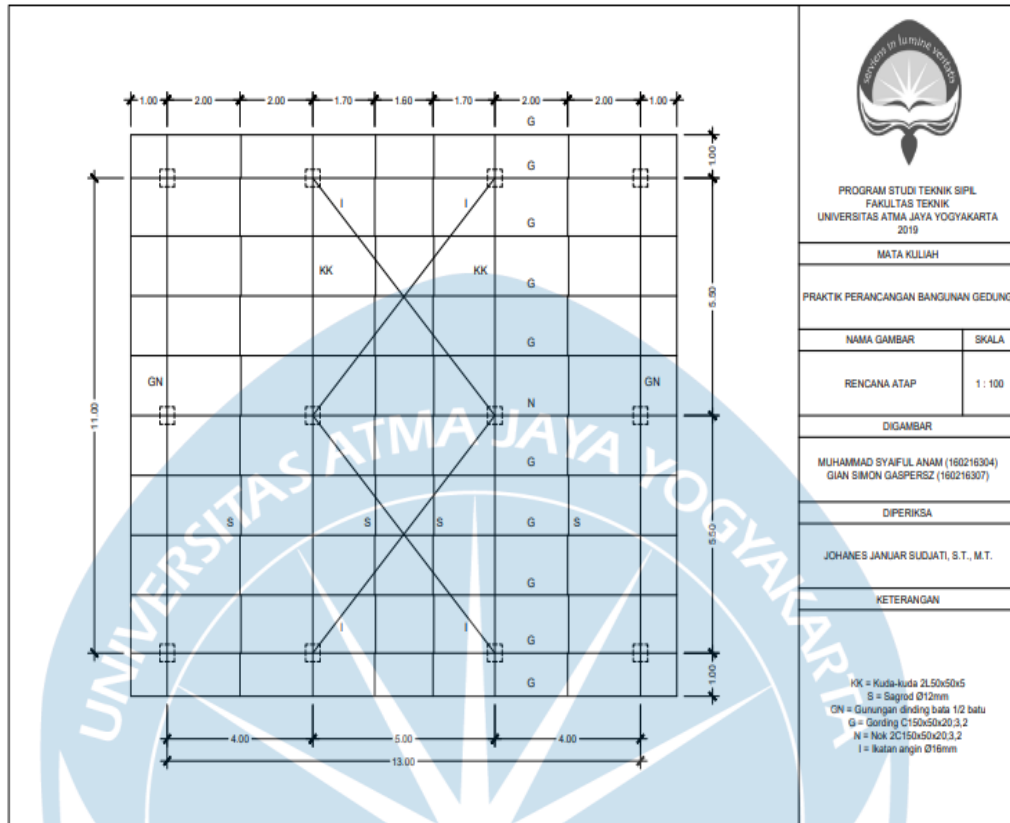
TABLE: Column Forces							
Story	Column	Load Case/ Combo	P kN	V2 kN	V3 kN	M2 kN-m	M3 kN-m
Story1	C6	Comb2	-1705.5857	-0.7498	-0.7643	-0.2697	-1.4989
Story1	C6	Comb1	-1500.7927	-0.7261	-0.6379	-0.4312	-1.4265
Story1	C6	Comb1	-1477.6927	-0.7261	-0.6379	1.3231	0.5702
Story1	C6	Comb1	-1454.5927	-0.7261	-0.6379	3.0774	2.5669
Story1	C7	Comb1	-1409.0831	2.0221	0.1674	0.7982	4.0148
Story1	C7	Comb1	-1385.9831	2.0221	0.1674	0.3378	-1.5459
Story1	C7	Comb1	-1362.8831	2.0221	0.1674	-0.1225	-7.1065
Story1	C6	Comb2	-1685.7857	-0.7498	-0.7643	1.8321	0.5631
Story1	C6	Comb2	-1665.9857	-0.7498	-0.7643	3.9339	2.625
Story1	C7	Comb2	-1585.9526	2.5525	0.2617	1.234	5.0397
Story1	C7	Comb2	-1566.1526	2.5525	0.2617	0.5143	-1.9797
Story1	C7	Comb2	-1546.3526	2.5525	0.2617	-0.2055	-8.9991
Story1	C16	Comb3	-1176.5842	79.5241	7.744	-15.4164	61.3705
Story1	C6	Comb3	-1652.8992	34.2686	0.3778	1.2611	125.854
Story1	C6	Comb3	-1632.2742	34.2686	-0.3778	2.3	31.6153
Story1	C6	Comb3	-1611.6492	34.2686	-0.3778	3.339	-62.6233
Story1	C7	Comb3	-1459.5084	36.6354	-0.4873	-1.3208	130.5402
Story1	C7	Comb3	-1438.8834	36.6354	-0.4873	0.0191	29.7929
Story1	C7	Comb3	-1418.2584	36.6354	-0.4873	1.3591	-70.9544
Story1	C15	Comb3	-1329.4061	56.4657	7.5684	17.0258	161.5206
Story1	C15	Comb3	-1315.1561	56.4657	7.5684	2.6458	54.2357
Story1	C13	Comb4	-1012.6869	-61.4865	3.4879	6.0637	-169.2585
Story1	C6	Comb4	-1551.0777	-35.7245	-1.0332	-1.9061	-128.7465
Story1	C6	Comb4	-1530.4527	-35.7245	-1.0332	0.9352	-30.5042
Story1	C7	Comb4	-1529.4202	-32.0004	0.934	3.4335	-121.3729
Story1	C6	Comb4	-1509.8277	-35.7245	-1.0332	3.7766	67.7381
Story1	C7	Comb4	-1508.7952	-32.0004	0.934	0.865	-33.3717
Story1	C7	Comb4	-1488.1702	-32.0004	0.934	-1.7035	54.6294
Story1	C8	Comb5	-979.211	3.6262	48.1586	170.4599	8.2457
Story1	C6	Comb5	1594.9033	0.2477	36.212	129.5328	0.5753
Story1	C6	Comb5	-1574.2783	-0.2477	36.212	29.9497	1.2564
Story1	C6	Comb5	-1553.6533	-0.2477	36.212	-69.6334	1.9375
Story1	C7	Comb5	-1493.5499	2.8972	43.0847	152.7368	6.8021
Story1	C7	Comb5	-1472.9249	2.8972	43.0847	34.2538	-1.1651
Story1	C7	Comb5	-1452.2999	2.8972	43.0847	-84.2292	-9.1324
Story1	C6	Comb6	-1609.0736	-1.2082	-37.6231	-130.1779	-3.4679
Story1	C6	Comb6	-1588.4486	-1.2082	-37.6231	-26.7145	-0.1453
Story1	C6	Comb6	-1567.8236	-1.2082	-37.6231	76.7489	3.1773

Story1	C7	Comb6	-1495.3787	1.7378	-42.638	-150.6241	2.3651
Story1	C7	Comb6	-1474.7537	1.7378	-42.638	-33.3696	-2.4137
Story1	C7	Comb6	-1454.1287	1.7378	-42.638	83.8848	-7.1926

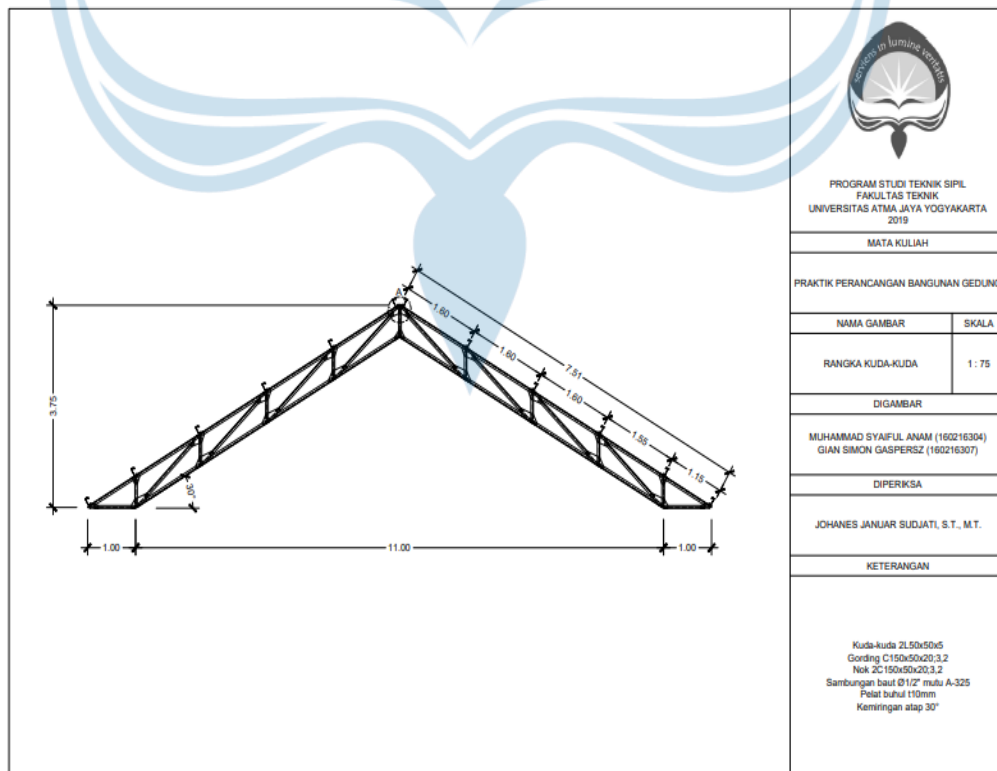
Output ETABS pada reaksi tumpuan

TABLE: Joint Reactions								
Story	Joint	Load Case/	FX	FY	FZ	MX	MY	MZ
	Label	Combo	kN	kN	kN	kN-m	kN-m	kN-m
Base	1	D	0.9857	-1.0151	200.2866	2.2663	1.5118	-0.0268
Base	1	L	2.0251	-0.7072	114.914	1.8569	2.8448	0.0247
Base	1	SD	3.7736	-2.427	332.9777	5.4529	5.5657	0.0978
Base	2	D	0.1986	-2.0544	331.5476	4.2351	0.3943	-0.0152
Base	2	L	-1.476	-1.2923	189.0956	2.895	-2.0913	0.0247
Base	2	SD	-2.2312	-2.4252	449.8218	5.2378	-2.8973	0.0728
Base	3	D	-0.5053	-2.1689	329.971	4.3678	-1.1558	0.0369
Base	3	L	-0.3581	-1.3453	124.6267	2.861	-0.8419	0.0567
Base	3	SD	-0.699	-2.2259	336.1851	4.6673	-1.5237	0.0733
Base	4	D	-0.6342	-1.351	225.5598	2.6785	-1.411	0.0369
Base	4	L	-0.3304	-0.6577	54.6414	1.3922	-0.7869	0.0567
Base	4	SD	-0.9874	-1.8478	204.3531	3.7798	-2.0947	0.0733
Base	5	D	1.0955	-0.3027	320.4227	0.8301	2.1101	0.0369
Base	5	L	0.9878	0.3655	148.0036	-0.2847	1.9708	0.0567
Base	5	SD	1.7096	0.9849	446.158	-1.378	3.4362	0.0733
Base	6	D	0.546	0.0246	526.1436	0.1121	1.022	0.0369
Base	6	L	0.0797	0.1359	261.995	0.0624	0.1726	0.0567
Base	6	SD	-0.0274	0.431	545.8512	-0.4201	-0.0031	0.0733
Base	7	D	0.773	-0.029	516.1823	0.1309	-1.5896	0.0369
Base	7	L	-0.5121	-0.0739	236.3544	0.3437	-0.999	0.0567
Base	7	SD	-0.6713	-0.0905	490.3057	0.4392	-1.2781	0.0733
Base	8	D	-0.9522	-0.0021	334.9211	0.0077	-1.9445	0.0369
Base	8	L	-0.5801	-0.036	108.7558	0.1612	-1.1337	0.0567
Base	8	SD	-1.0895	-0.0482	359.5665	0.2166	-2.1062	0.0733
Base	9	D	0.6109	1.3017	223.9874	-2.3466	1.2467	0.0369
Base	9	L	0.3418	0.5225	52.2447	-0.5956	0.8394	0.0567
Base	9	SD	1.018	1.673	201.0385	-2.7405	2.2575	0.0733
Base	10	D	0.462	2.1143	329.4968	-4.0255	0.9518	0.0369
Base	10	L	0.3155	1.223	120.3157	-2.0899	0.7872	0.0567
Base	10	SD	0.6318	2.0761	328.9317	-3.6774	1.4928	0.0733
Base	11	D	-0.4409	2.1337	329.8831	-4.1513	-0.8359	0.0369
Base	11	L	-0.2219	1.2527	121.5339	-2.283	-0.2768	0.0567
Base	11	SD	-0.5031	2.1114	330.8495	-3.9207	-0.7542	0.0733
Base	12	D	-0.593	1.3489	224.6909	-2.6672	-1.1369	0.0369
Base	12	L	-0.2713	0.6127	52.8633	-1.1232	-0.3747	0.0567
Base	12	SD	-0.9242	1.7882	202.0998	-3.4194	-1.588	0.0733

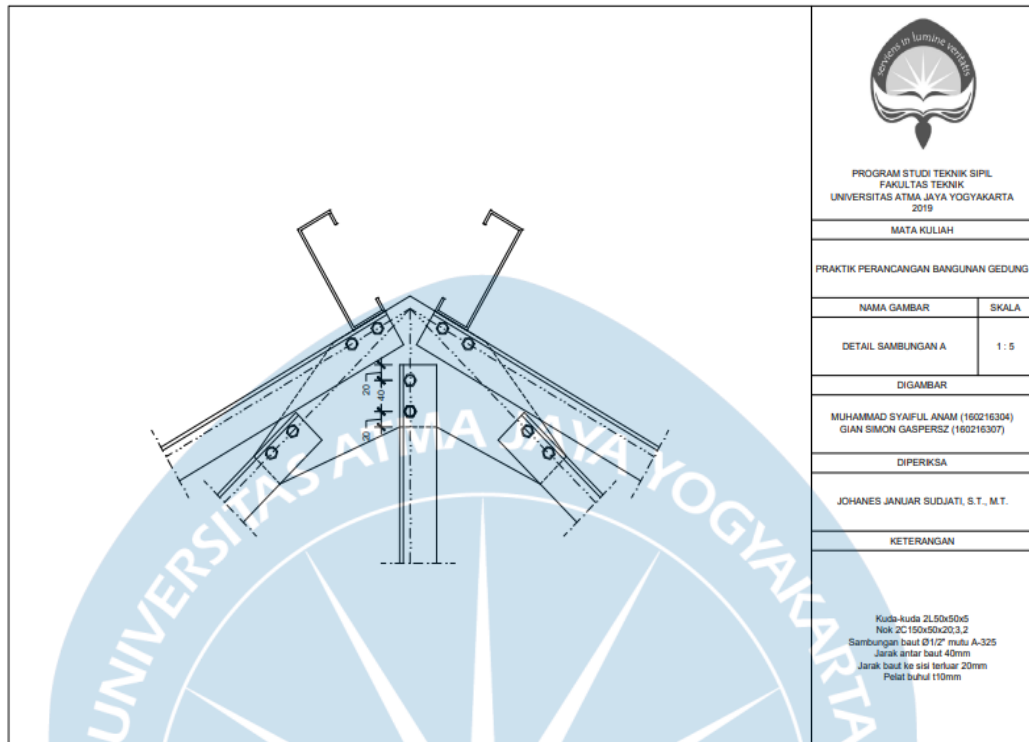
Denah rencana atap



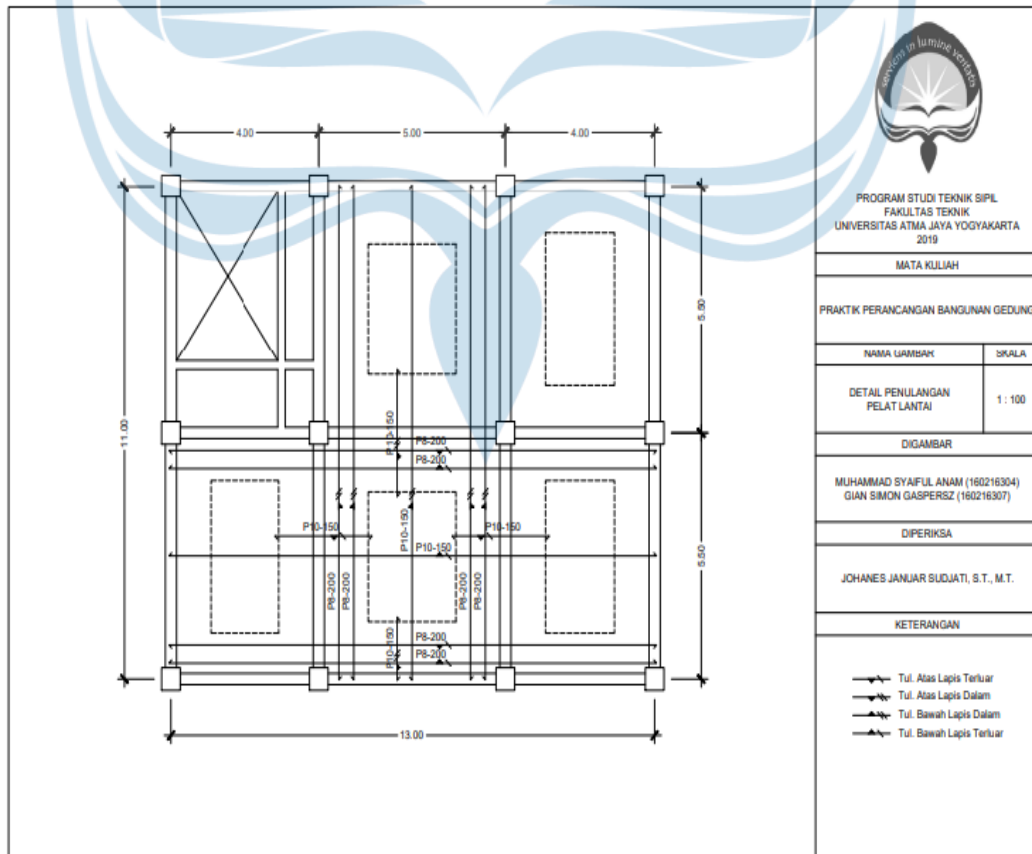
Rangka kuda-kuda



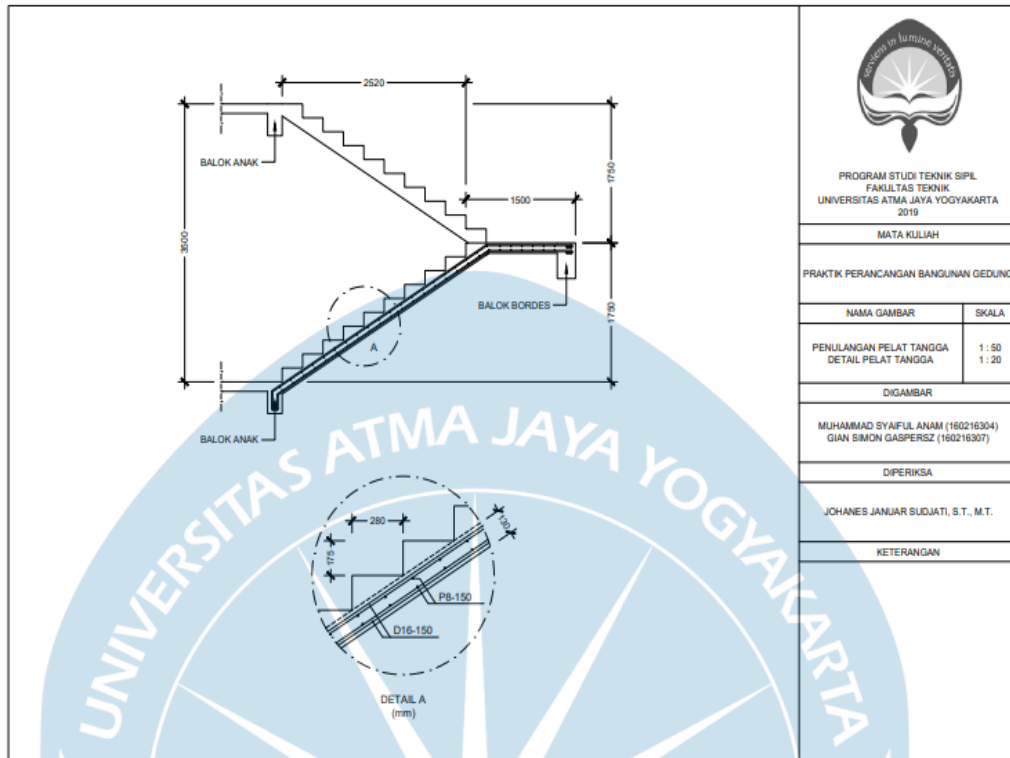
Detail sambungan



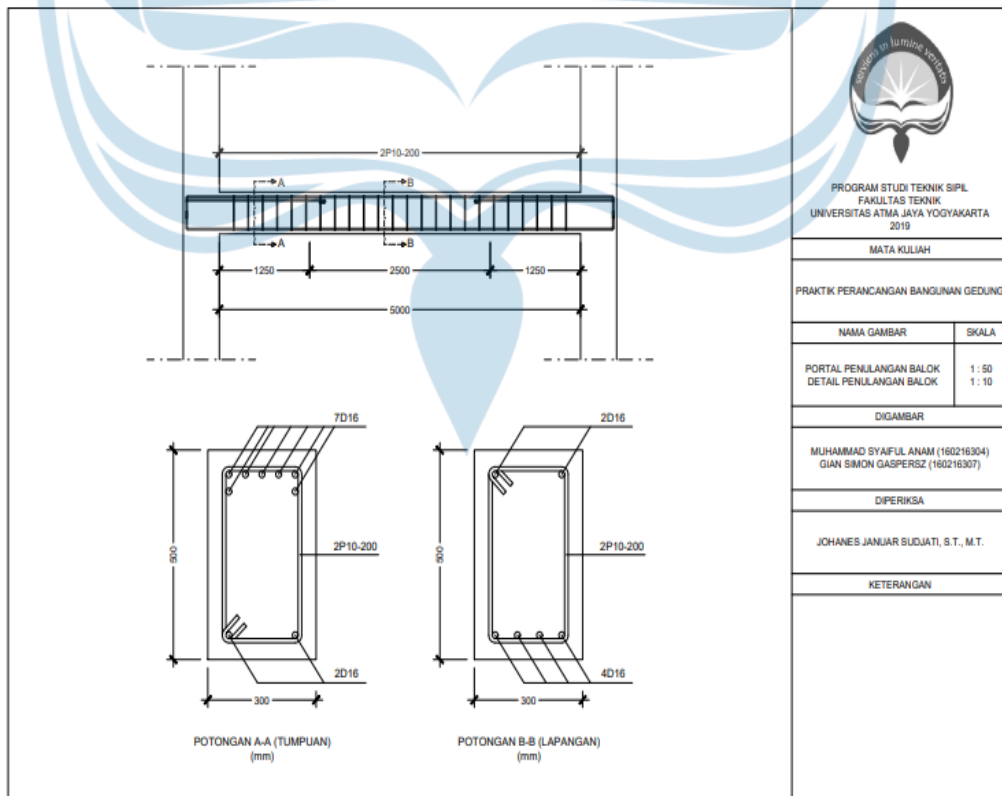
Detail penulangan pelat lantai



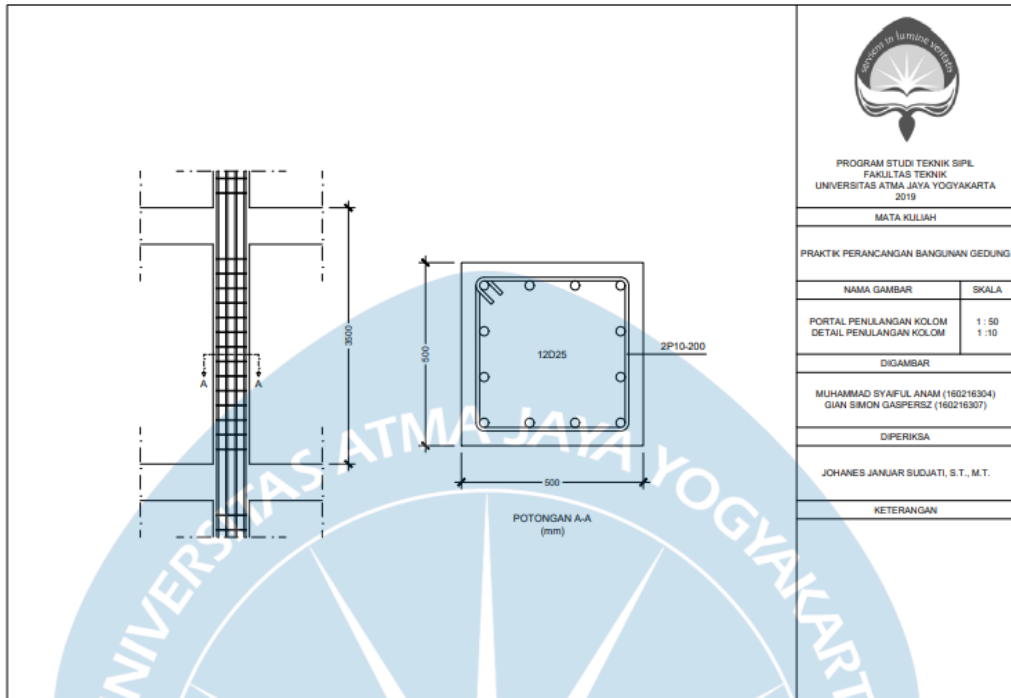
Detail penulangan tangga




Detail penulangan balok

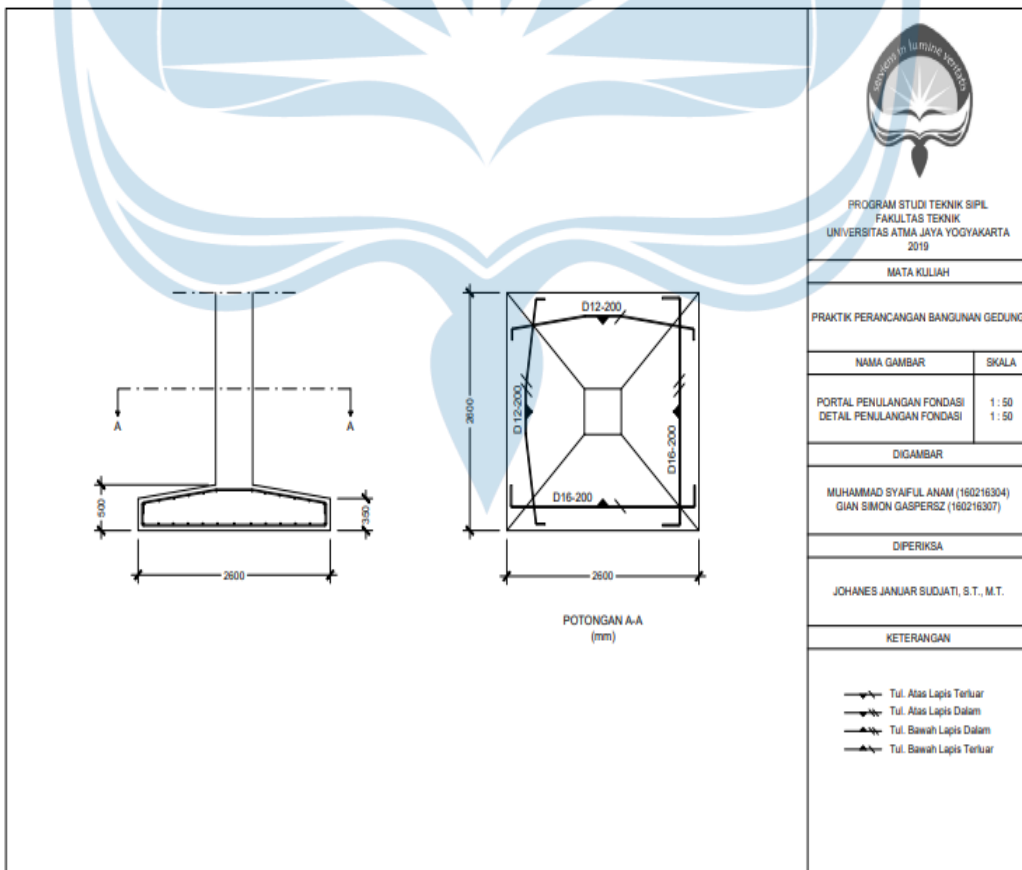







Detail penulangan kolom



 PROGRAM STUDI TEKNIK SIPIL FAKULTAS TEKNIK UNIVERSITAS ATMA JAYA YOGYAKARTA 2019	
MATA KULIAH	
PRAKTIK PERANCANGAN BANGUNAN GEDUNG	
NAMA GAMBAR	SKALA
PORTAL PENULANGAN KOLOM DETAIL PENULANGAN KOLOM	1 : 50 1 : 10
DIGAMBAR	
MUHAMMAD SYAIFUL ANAM (160216304) GIAN SIMON GASPERSZ (160216307)	
DIPERIKSA	
JOHANES JANUAR SUDJATI, S.T., M.T.	
KETERANGAN	

Detail penulangan fondasi telapak



 PROGRAM STUDI TEKNIK SIPIL FAKULTAS TEKNIK UNIVERSITAS ATMA JAYA YOGYAKARTA 2019	
MATA KULIAH	
PRAKTIK PERANCANGAN BANGUNAN GEDUNG	
NAMA GAMBAR	SKALA
PORTAL PENULANGAN FONDASI DETAIL PENULANGAN FONDASI	1 : 50 1 : 50
DIGAMBAR	
MUHAMMAD SYAIFUL ANAM (160216304) GIAN SIMON GASPERSZ (160216307)	
DIPERIKSA	
JOHANES JANUAR SUDJATI, S.T., M.T.	
KETERANGAN	
<ul style="list-style-type: none">  Tul. Atas Lapis Terluar  Tul. Atas Lapis Dalam  Tul. Bawah Lapis Dalam  Tul. Bawah Lapis Terluar 	

Luas DAS masing-masing stasiun hujan yang mewakili

Tahun	Tanggal	Stasiun Bronggang		Stasiun Kempot		Stasiun Prumpung		Stasiun Tanjung Tirta		Curah Hujan Total	CH rata2 Max/th	CH rata2 Min/th
		CH	% Luas	CH	% Luas	CH (mm)	% Luas	CH	% Luas			
		(mm)	0.600	(mm)	0.090		0.010	(mm)	0.300			
1986	26 Maret	145.00	87.00	0.00	0.00	4.00	0.04	2.00	0.60	87.64	87.64	2.76
	24 November	0.00	0.00	104.00	9.38	56.00	0.57	63.00	18.88	28.83		
	9 Oktober	0.00	0.00	15.00	1.35	79.00	0.81	2.00	0.60	2.76		
	24 Januari	0.00	0.00	5.30	0.48	1.00	0.01	120.00	35.95	36.44		
1987	4 Januari	168.00	100.80	2.00	0.18	16.00	0.16	1.00	0.30	101.44	101.44	32.00
	2 Februari	29.00	17.40	125.00	11.27	80.00	0.82	50.00	14.98	44.47		
	1 Desember	60.00	36.00	4.00	0.36	118.00	1.20	51.00	15.28	52.84		
	24 Januari	3.00	1.80	38.00	3.43	40.00	0.41	88.00	26.37	32.00		
1988	12 November	117.00	70.20	0.00	0.00	69.00	0.70	15.00	4.49	75.40	75.40	1.64
	10 November	0.00	0.00	90.00	8.12	39.00	0.40	0.00	0.00	8.52		
	4 Februari	0.00	0.00	1.00	0.09	152.00	1.55	0.00	0.00	1.64		
	5 Februari	0.00	0.00	52.00	4.69	20.00	0.20	150.00	44.94	49.84		
1989	15 Desember	115.00	69.00	5.00	0.45	0.00	0.00	0.00	0.00	69.45	69.45	8.85
	3 Maret	0.00	0.00	116.00	10.46	30.00	0.31	3.00	0.90	11.67		
	22 Januari	0.00	0.00	5.00	0.45	89.00	0.91	25.00	7.49	8.85		
	19 Juli	23.00	13.80	28.00	2.53	3.00	0.03	115.00	34.45	50.81		
1990	4 Desember	128.00	76.80	0.00	0.00	0.00	0.00	16.00	4.79	81.59	81.59	7.87
	7 Januari	0.00	0.00	77.00	6.95	3.00	0.03	3.00	0.90	7.87		
	28 Februari	6.00	3.60	54.00	4.87	76.00	0.77	40.00	11.98	21.23		
	17 Februari	49.00	29.40	35.00	3.16	4.00	0.04	86.00	25.77	58.36		
1991	27 Februari	80.00	48.00	4.00	0.36	0.00	0.00	28.00	8.39	56.75	56.75	8.18
	11 Januari	0.00	0.00	75.00	6.76	139.00	1.42	0.00	0.00	8.18		
	11 April	0.00	0.00	75.00	6.76	139.00	1.42	0.00	0.00	8.18		
	11 Februari	13.00	7.80	36.00	3.25	3.00	0.03	129.00	38.65	49.73		
1992	31 Agustus	111.00	66.60	45.00	4.06	0.00	0.00	90.00	26.96	97.62	97.62	10.28
	15 November	0.00	0.00	110.00	9.92	35.00	0.36	0.00	0.00	10.28		
	14 Januari	10.00	6.00	9.00	0.81	141.00	1.44	9.00	2.70	10.95		
	21 Maret	38.00	22.80	30.00	2.71	0.00	0.00	120.00	35.95	61.46		
1993	8 Maret	79.00	47.40	21.00	1.89	0.00	0.00	3.00	0.90	50.19	50.19	2.79
	25 Maret	0.00	0.00	95.00	8.57	4.00	0.04	0.00	0.00	8.61		
	5 April	0.00	0.00	18.00	1.62	114.00	1.16	0.00	0.00	2.79		
	22 Januari	0.00	0.00	46.00	4.15	58.00	0.59	97.00	29.06	33.80		
1994	27 Maret	113.00	67.80	2.80	0.25	32.30	0.33	9.00	2.70	71.08	71.08	46.60
	25 Maret	77.00	46.20	76.40	6.89	3.50	0.04	23.00	6.89	60.02		
	7 Desember	55.00	33.00	12.00	1.08	111.30	1.13	38.00	11.39	46.60		
	17 November	0.00	0.00	0.00	0.00	4.90	0.05	230.00	68.91	68.96		
1995	6 Februari	106.00	63.60	13.00	1.17	38.00	0.39	48.00	14.38	79.54	81.09	25.67
	21 Juni	80.00	48.00	93.00	8.39	2.00	0.02	27.00	8.09	64.50		
	15 November	29.00	17.40	48.00	4.33	151.00	1.54	8.00	2.40	25.67		
	21 November	69.00	41.40	92.00	8.30	22.50	0.23	104.00	31.16	81.09		
1996	18 November	87.00	52.20	81.15	7.32	82.56	0.84	74.00	22.17	82.53	82.53	82.53
	18 November	87.00	52.20	81.15	7.32	82.56	0.84	74.00	22.17	82.53		
	18 November	87.00	52.20	81.15	7.32	82.56	0.84	74.00	22.17	82.53		
	13 Februari	74.00	44.40	56.49	5.10	48.50	0.49	78.00	23.37	73.36		
1997	13 Februari	74.00	44.40	56.49	5.10	48.50	0.49	78.00	23.37	73.36	73.36	5.20
	12 Februari	0.00	0.00	39.14	3.53	164.00	1.67	0.00	0.00	5.20		
	13 Februari	74.00	44.40	56.49	5.10	48.50	0.49	78.00	23.37	73.36		
	15 Maret	95.00	57.00	65.74	5.93	30.00	0.31	17.00	5.09	68.33		
1998	31 Desember	56.00	33.60	80.53	7.26	110.50	1.13	25.00	7.49	49.48	68.33	38.11
	6 Februari	0.00	0.00	56.27	5.07	125.00	1.27	106.00	31.76	38.11		
	6 Februari	0.00	0.00	56.27	5.07	125.00	1.27	106.00	31.76	38.11		
	13 Desember	110.00	66.00	0.00	0.00	121.50	1.24	79.00	23.67	90.91		
1999	6 Maret	0.00	0.00	69.50	6.27	0.00	0.00	16.00	4.79	11.06	96.24	11.06
	13 Desember	110.00	66.00	0.00	0.00	121.50	1.24	79.00	23.67	90.91		
	14 Maret	78.00	46.80	0.00	0.00	0.00	0.00	165.00	49.44	96.24		
	22 November	125.00	75.00	200.00	18.04	53.00	0.54	0.00	0.00	93.58		
2000	22 November	125.00	75.00	200.00	18.04	53.00	0.54	0.00	0.00	93.58	93.58	21.15
	22 April	0.00	0.00	0.00	0.00	106.00	1.08	67.00	20.07	21.15		
	21 Maret	24.00	14.40	5.50	0.50	0.50	0.01	81.00	24.27	39.17		
	5 Oktober	93.00	55.80	0.00	0.00	0.00	0.00	0.00	0.00	55.80		
2001	23 Maret	0.00	0.00	125.00	11.27	17.00	0.17	5.00	1.50	12.95	55.80	7.10
	2 Desember	8.00	4.80	7.00	0.63	164.00	1.67	0.00	0.00	7.10		
	10 April	36.00	21.60	4.00	0.36	0.00	0.00	89.00	26.67	48.63		

Analisa statistik

Thn	n	Xi	$(Xi - X_{rata-rata})$	$(Xi - X_{rata-rata})^2$	$(Xi - X_{rata-rata})^3$	$(Xi - X_{rata-rata})^4$
1986	1	87.64	8.55	73.2	625.9	5354
1987	2	101.44	22.36	499.8	11174.8	249834
1988	3	75.40	-3.69	13.6	-50.2	185
1989	4	69.45	-9.64	92.8	-894.5	8619
1990	5	81.59	2.51	6.3	15.8	40
1991	6	56.75	-22.34	498.9	-11143.9	248915
1992	7	97.62	18.54	343.6	6370.1	118084
1993	8	50.19	-28.89	834.8	-24120.6	696923
1994	9	71.08	-8.01	64.1	-513.5	4112
1995	10	81.09	2.00	4.0	8.0	16
1996	11	82.53	3.45	11.9	40.9	141
1997	12	73.36	-5.73	32.8	-187.8	1076
1998	13	68.33	-10.76	115.7	-1244.8	13391
1999	14	96.24	17.15	294.1	5043.4	86490
2000	15	93.58	14.49	210.1	3045.1	44137
Total		1186.29	-0,01	3095.8	-11831.5	1477315.7
X rerata		79.09				

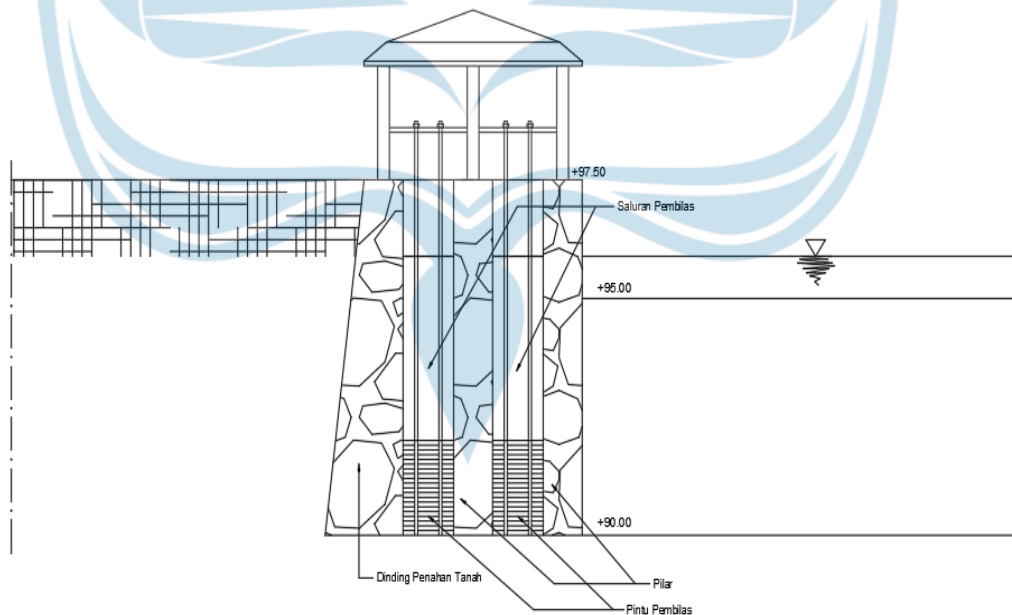
Uji Smirnov – Kolmogrov

M	Tahun	CH Rata2 Tiap Tahun	Curah Hujan Rata2 (Xrt)	$P(X) = M/(n+1)$	$P(X<)$	$f(t) = (Xi - Xrt) / Sd$	$P'(X) = M/(n-1)$	$P'(X<)$	D
1	1993	50.1929	79	0.0625	0.9375	-1.9430	0.0714	0.9286	0.0089
2	1991	56.7498	79	0.125	0.8750	-1.5021	0.1429	0.8571	0.0179
3	1998	68.3289	79	0.1875	0.8125	-0.7234	0.2143	0.7857	0.0268
4	1989	69.4510	79	0.25	0.7500	-0.6479	0.2857	0.7143	0.0357
5	1994	71.0784	79	0.3125	0.6875	-0.5385	0.3571	0.6429	0.0446
6	1997	73.3591	79	0.375	0.6250	-0.3851	0.4286	0.5714	0.0536
7	1988	75.3976	79	0.4375	0.5625	-0.2480	0.5000	0.5000	0.0625
8	1995	81.0867	79	0.5	0.5000	0.1345	0.5714	0.4286	0.0714
9	1990	81.5937	79	0.5625	0.4375	0.1686	0.6429	0.3571	0.0804
10	1996	82.5321	79	0.625	0.3750	0.2317	0.7143	0.2857	0.0893
11	1986	87.6400	79	0.6875	0.3125	0.5752	0.7857	0.2143	0.0982
12	2000	93.5806	79	0.75	0.2500	0.9747	0.8571	0.1429	0.1071
13	1999	96.2353	79	0.8125	0.1875	1.1532	0.9286	0.0714	0.1161
14	1992	97.6235	79	0.875	0.1250	1.2466	1.0000	0.0000	0.1250
15	1987	101.4431	79	0.9375	0.0625	1.5035	1.0714	-0.0714	0.1339
Total				1186.2927					
X rerata				79					

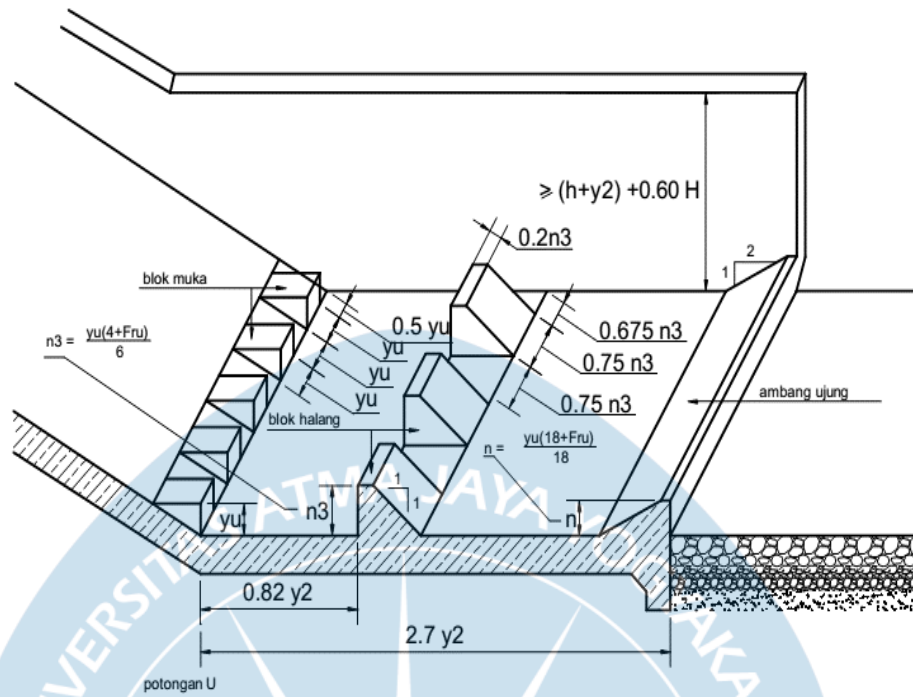
Perhitungan debit andalan

Tahun	Curah Hujan Minimum	t	β	q	α	Q	Urutan		Andalan (%)	Tahun
							m	Debit		
1986	2.76	17.18	0.88	0.04	0.42	1.22	1	68.81	6.67	1996
1987	32.00	12.06	0.85	0.67	0.46	20.68	2	32.93	13.33	1994
1988	1.64	18.49	0.88	0.02	0.42	0.68	3	25.62	20.00	1998
1989	8.85	14.57	0.86	0.16	0.43	4.56	4	20.68	26.67	1987
1990	7.87	14.81	0.87	0.14	0.42	3.99	5	15.83	33.33	1995
1991	8.18	14.73	0.87	0.14	0.42	4.17	6	12.57	40.00	2000
1992	10.28	14.26	0.86	0.18	0.43	5.42	7	5.90	46.67	1999
1993	2.79	17.16	0.88	0.04	0.42	1.23	8	5.42	53.33	1992
1994	46.60	11.38	0.84	1.02	0.48	32.93	9	4.56	60.00	1989
1995	25.67	12.47	0.85	0.52	0.45	15.83	10	4.17	66.67	1991
1996	82.53	10.38	0.84	1.97	0.53	68.81	11	3.99	73.33	1990
1997	5.20	15.71	0.87	0.09	0.42	2.49	12	2.49	80.00	1997
1998	38.11	11.74	0.85	0.81	0.47	25.62	13	1.23	86.67	1993
1999	11.06	14.11	0.86	0.20	0.43	5.90	14	1.22	93.33	1986
2000	21.15	12.84	0.85	0.42	0.44	12.57	15	0.68	100.00	1988

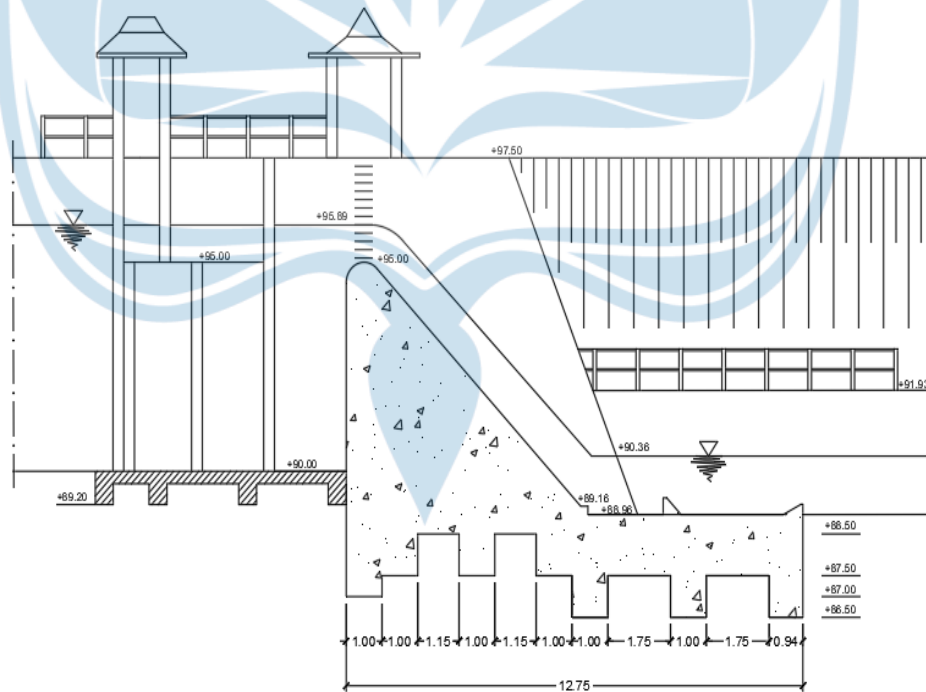
Debit andalan 80% sebesar 2.49 m³/tahun.



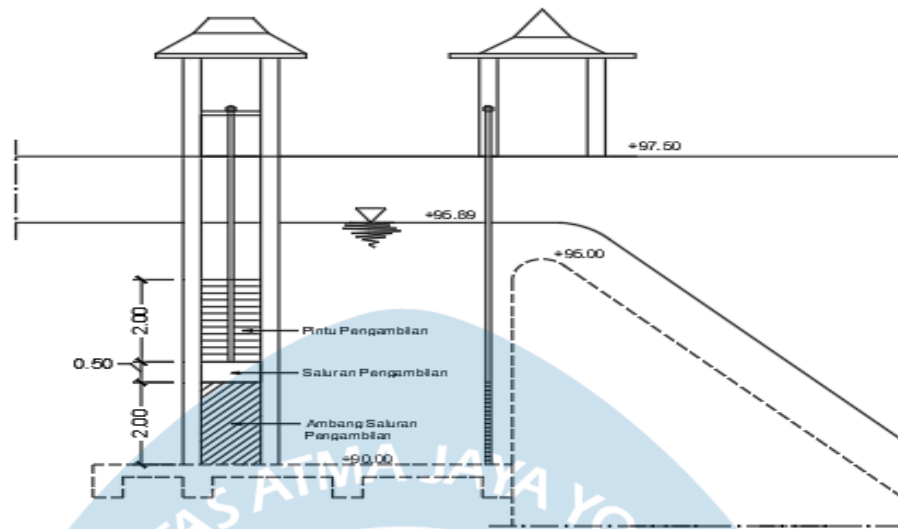
Tampak hulu bendung dengan pintu pembilas



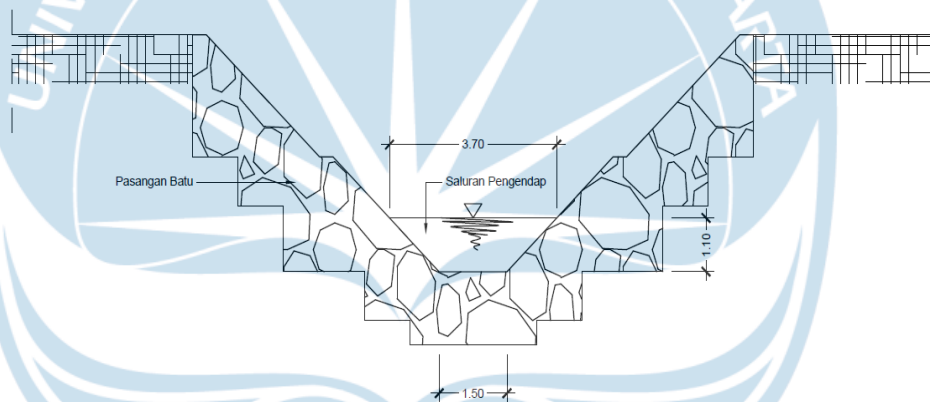
Perencanaan kolam olah dengan USBR Tipe III



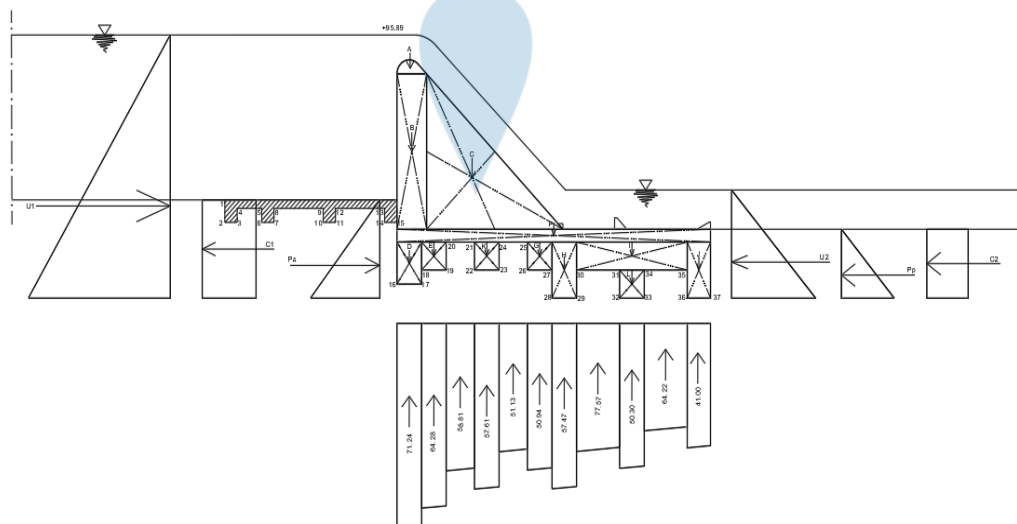
Dimensi bendung (m)



Detail pintu pengambilan



Detail saluran pengendap



Stabilitas bending

Penetapan durasi pekerjaan

NO KEGIATAN	NAMA KEGIATAN	Duration	Start	Finish
1	PEKERJAAN PERSIAPAN	23 days	Mon 11/05/20	Wed 10/06/20
2	Pembersihan Lapangan dan Perataan	5 days	Fri 15/05/20	Thu 21/05/20
3	Pengukuran dan Pemasangan Bouwplank	3 days	Fri 22/05/20	Tue 26/05/20
4	Pembuatan kantor sementara dengan lantai plesteran	7 days	Wed 27/05/20	Thu 04/06/20
5	Pembuatan gudang semen dan alat-alat (sewa)	3 days	Fri 05/06/20	Tue 09/06/20
6	Pembuatan papan nama proyek	1 day	Wed 10/06/20	Wed 10/06/20
7	Pembuatan pagar sementara	4 days	Mon 11/05/20	Thu 14/05/20
8	PEKERJAAN GALIAN TANAH	14 days	Thu 11/06/20	Tue 30/06/20
9	PEKERJAAN PONDASI	35 days	Wed 01/07/20	Mon 17/08/20
10	Bekisting Cyclope	6 days	Wed 01/07/20	Wed 08/07/20
11	Pek. Beton K350	7 days	Thu 09/07/20	Fri 17/07/20
12	Bongkar Begesting	1 day	Sat 18/07/20	Sat 18/07/20
13	Bekisting Footplate	7 days	Mon 20/07/20	Tue 28/07/20
14	Pek. Beton K350	6 days	Wed 29/07/20	Wed 05/08/20
15	Bongkar Begesting	1 day	Thu 06/08/20	Thu 06/08/20
16	Urugan kembali bekas galian	7 days	Fri 07/08/20	Mon 17/08/20
17	PEKERJAAN STRUKTUR LANTAI 1	62 days	Wed 19/08/20	Wed 04/11/20
18	PEKERJAAN SLOOF	14 days	Wed 19/08/20	Sat 05/09/20
19	RABAT BETON	14 days	Wed 02/09/20	Thu 17/09/20
20	PEKERJAAN KOLOM	14 days	Fri 18/09/20	Tue 06/10/20
21	PEKERJAAN TANGGA LT 1	7 days	Tue 27/10/20	Wed 04/11/20
22	PEKERJAAN STRUKTUR LANTAI 2	48 days	Thu 08/10/20	Tue 08/12/20
23	PEKERJAAN PELAT	9 days	Thu 08/10/20	Fri 16/10/20
24	PEKERJAAN BALOK	9 days	Thu 08/10/20	Fri 16/10/20
25	PEKERJAAN KOLOM	14 days	Sat 17/10/20	Wed 04/11/20
26	PEKERJAAN TANGGA	7 days	Mon 30/11/20	Tue 08/12/20
27	PEKERJAAN STRUKTUR LANTAI 3	46 days	Sat 07/11/20	Wed 06/01/21
28	PEKERJAAN PELAT	9 days	Sat 07/11/20	Wed 18/11/20
29	PEKERJAAN BALOK	9 days	Sat 07/11/20	Wed 18/11/20
30	PEKERJAAN KOLOM	14 days	Thu 19/11/20	Tue 08/12/20
31	PEKERJAAN TANGGA	7 days	Tue 29/12/20	Wed 06/01/21
32	PEKERJAAN STRUKTUR LANTAI 4	46 days	Wed 09/12/20	Thu 04/02/21
33	PEKERJAAN PELAT	9 days	Wed 09/12/20	Thu 17/12/20
34	PEKERJAAN BALOK	9 days	Wed 09/12/20	Thu 17/12/20
35	PEKERJAAN KOLOM	14 days	Fri 18/12/20	Wed 06/01/21
36	PEKERJAAN TANGGA	7 days	Fri 29/01/21	Thu 04/02/21
37	PEKERJAAN STRUKTUR LANTAI 5	30 days	Thu 07/01/21	Fri 12/02/21
38	PEKERJAAN PELAT	9 days	Thu 07/01/21	Tue 19/01/21
39	PEKERJAAN BALOK	9 days	Thu 07/01/21	Tue 19/01/21
40	PEKERJAAN KOLOM	14 days	Wed 20/01/21	Thu 04/02/21
41	PEKERJAAN TANGGA	7 days	Fri 05/02/21	Fri 12/02/21
42	PEKERJAAN ATAP	14 days	Fri 05/02/21	Mon 22/02/21
43	KUDA-KUDA BAJA BERAT (Lengkap)	7 days	Fri 05/02/21	Fri 12/02/21
44	Atap Genteng Keramik Glasur	4 days	Sat 13/02/21	Wed 17/02/21
45	Bubungan Genteng Keramik Glasur	3 days	Thu 18/02/21	Mon 22/02/21
46	PEKERJAAN PASANGAN DAN PLESTERAN	77 days	Wed 14/10/20	Fri 22/01/21
47	LANTAI 1	21 days	Wed 14/10/20	Mon 09/11/20

48	LANTAI 2	21 days	Mon 02/11/20	Fri 27/11/20
49	LANTAI 3	21 days	Thu 19/11/20	Tue 15/12/20
50	LANTAI 4	21 days	Wed 09/12/20	Mon 04/01/21
51	LANTAI 5	14 days	Fri 25/12/20	Wed 13/01/21
52	LANTAI ATAP	14 days	Tue 05/01/21	Fri 22/01/21
53	PEKERJAAN PINTU DAN JENDELA	56 days	Fri 20/11/20	Mon 01/02/21
54	LANTAI 1	21 days	Fri 20/11/20	Wed 16/12/20
55	LANTAI 2	21 days	Thu 10/12/20	Tue 05/01/21

56	LANTAI 3	21 days	Mon 28/12/20	Mon 25/01/21
57	LANTAI 4	14 days	Fri 15/01/21	Mon 01/02/21
58	LANTAI 5	7 days	Tue 26/01/21	Mon 01/02/21
59	PEKERJAAN PLAFON	64 days	Mon 02/11/20	Mon 25/01/21
60	LANTAI 1	21 days	Mon 02/11/20	Fri 27/11/20
61	LANTAI 2	21 days	Fri 20/11/20	Wed 16/12/20
62	LANTAI 3	21 days	Thu 10/12/20	Tue 05/01/21
63	LANTAI 4	14 days	Mon 28/12/20	Thu 14/01/21
64	LANTAI 5	14 days	Wed 06/01/21	Mon 25/01/21
65	LANTAI ATAP	14 days	Wed 06/01/21	Mon 25/01/21
66	PEKERJAAN FINISHING LANTAI DAN DINDING	63 days	Fri 20/11/20	Tue 09/02/21
67	LANTAI 1	21 days	Fri 20/11/20	Wed 16/12/20
68	LANTAI 2	21 days	Thu 10/12/20	Tue 05/01/21
69	LANTAI 3	21 days	Mon 28/12/20	Mon 25/01/21
70	LANTAI 4	14 days	Fri 15/01/21	Mon 01/02/21
71	LANTAI 5	14 days	Tue 26/01/21	Tue 09/02/21
72	PEKERJAAN PENGECATAN	90 days	Thu 17/12/20	Thu 15/04/21
73	LANTAI 1	30 days	Thu 17/12/20	Wed 27/01/21
74	LANTAI 2	30 days	Tue 19/01/21	Tue 23/02/21
75	LANTAI 3	30 days	Mon 15/02/21	Fri 26/03/21
76	LANTAI 4	21 days	Thu 18/03/21	Thu 15/04/21
77	LANTAI 5	14 days	Mon 29/03/21	Thu 15/04/21
78	LANTAI ATAP	7 days	Wed 07/04/21	Thu 15/04/21
79	PEKERJAAN PARTISI	63 days	Fri 20/11/20	Tue 09/02/21
80	LANTAI 1	21 days	Fri 20/11/20	Wed 16/12/20
81	LANTAI 2	21 days	Thu 10/12/20	Tue 05/01/21
82	LANTAI 3	21 days	Mon 28/12/20	Mon 25/01/21
83	LANTAI 4	14 days	Fri 15/01/21	Mon 01/02/21
84	LANTAI 5	14 days	Tue 26/01/21	Tue 09/02/21
85	PEKERJAAN ELEKTRIKAL	119 days	Thu 22/10/20	Fri 26/03/21
86	PEKERJAAN PANEL	35 days	Tue 09/02/21	Fri 26/03/21
87	LANTAI 1	7 days	Tue 09/02/21	Tue 16/02/21
88	LANTAI 2	7 days	Wed 17/02/21	Thu 25/02/21
89	LANTAI 3	7 days	Fri 26/02/21	Mon 08/03/21
90	LANTAI 4	7 days	Tue 09/03/21	Wed 17/03/21
91	LANTAI 5	7 days	Thu 18/03/21	Fri 26/03/21
92	PEKERJAAN PENGKABELAN	35 days	Tue 09/02/21	Fri 26/03/21
93	LANTAI 1	7 days	Tue 09/02/21	Tue 16/02/21
94	LANTAI 2	7 days	Wed 17/02/21	Thu 25/02/21
95	LANTAI 3	7 days	Fri 26/02/21	Mon 08/03/21
96	LANTAI 4	7 days	Tue 09/03/21	Wed 17/03/21
97	LANTAI 5	7 days	Thu 18/03/21	Fri 26/03/21

98	PEKERJAAN INSTALASI LAMPU DAN KOTAK KONTAK	84 days	Thu 22/10/20	Mon 08/02/21
99	LANTAI 1	21 days	Thu 22/10/20	Wed 18/11/20
100	LANTAI 2	21 days	Mon 02/11/20	Fri 27/11/20
101	LANTAI 3	21 days	Thu 19/11/20	Tue 15/12/20
102	LANTAI 4	21 days	Wed 09/12/20	Mon 04/01/21
103	LANTAI 5	21 days	Fri 25/12/20	Fri 22/01/21
104	Lantai Atap	21 days	Thu 14/01/21	Mon 08/02/21
105	PEKERJAAN KABEL TRAY	70 days	Thu 22/10/20	Fri 22/01/21
106	LANTAI 1	21 days	Thu 22/10/20	Wed 18/11/20
107	LANTAI 2	21 days	Mon 02/11/20	Fri 27/11/20
108	LANTAI 3	21 days	Thu 19/11/20	Tue 15/12/20
109	LANTAI 4	21 days	Wed 09/12/20	Mon 04/01/21
110	LANTAI 5	21 days	Fri 25/12/20	Fri 22/01/21
111	PEKERJAAN MEKANIKAL	91 days	Thu 22/10/20	Tue 16/02/21
112	PEKERJAAN TATA UDARA	70 days	Thu 22/10/20	Fri 22/01/21
113	LANTAI 1	21 days	Thu 22/10/20	Wed 18/11/20
114	LANTAI 2	21 days	Mon 02/11/20	Fri 27/11/20
115	LANTAI 3	21 days	Thu 19/11/20	Tue 15/12/20
116	LANTAI 4	21 days	Wed 09/12/20	Mon 04/01/21
117	LANTAI 5	21 days	Fri 25/12/20	Fri 22/01/21
118	PEKERJAAN INSTALASI AIR BERSIH, BEKAS, DAN KOTOR	91 days	Thu 22/10/20	Tue 16/02/21
119	LANTAI 1	42 days	Thu 22/10/20	Tue 15/12/20
120	Sanitasi air bersih	42 days	Thu 22/10/20	Tue 15/12/20
121	Sanitasi air bekas	42 days	Thu 22/10/20	Tue 15/12/20
122	Sanitasi air kotor	42 days	Thu 22/10/20	Tue 15/12/20
123	Sanitasi air hujan	21 days	Thu 19/11/20	Tue 15/12/20
124	LANTAI 2	42 days	Mon 02/11/20	Thu 24/12/20
125	Sanitasi air bersih	42 days	Mon 02/11/20	Thu 24/12/20
126	Sanitasi air bekas	42 days	Mon 02/11/20	Thu 24/12/20
127	Sanitasi air kotor	42 days	Mon 02/11/20	Thu 24/12/20
128	Sanitasi air hujan	21 days	Mon 30/11/20	Thu 24/12/20
129	LANTAI 3	42 days	Thu 19/11/20	Wed 13/01/21
130	Sanitasi air bersih	42 days	Thu 19/11/20	Wed 13/01/21
131	Sanitasi air bekas	42 days	Thu 19/11/20	Wed 13/01/21
132	Sanitasi air kotor	42 days	Thu 19/11/20	Wed 13/01/21
133	Sanitasi air hujan	21 days	Wed 16/12/20	Wed 13/01/21
134	LANTAI 4	42 days	Wed 09/12/20	Sun 31/01/21
135	Sanitasi air bekas	42 days	Wed 09/12/20	Sun 31/01/21
136	Sanitasi air kotor	42 days	Wed 09/12/20	Sun 31/01/21
137	Sanitasi air hujan	21 days	Tue 05/01/21	Sun 31/01/21
138	LANTAI 5	42 days	Fri 25/12/20	Tue 16/02/21
139	Sanitasi air bersih	42 days	Fri 25/12/20	Tue 16/02/21
140	Sanitasi air bekas	42 days	Fri 25/12/20	Tue 16/02/21
141	Sanitasi air kotor	42 days	Fri 25/12/20	Tue 16/02/21
142	Sanitasi air hujan	21 days	Mon 25/01/21	Tue 16/02/21
143	Sanitasi air hujan	14 days	Mon 01/02/21	Tue 16/02/21
144	Sanitasi air hujan	14 days	Mon 01/02/21	Tue 16/02/21

Hubungan antar aktivitas pekerjaan

NO KEGIATAN	NAMA KEGIATAN	Duration	Start	Finish	Predecessors
1	PEKERJAAN PERSIAPAN	23 days	Mon 11/05/20	Wed 10/06/20	
2	Pembersihan Lapangan dan Perataan	5 days	Fri 15/05/20	Thu 21/05/20	7
3	Pengukuran dan Pemasangan Bouwplank	3 days	Fri 22/05/20	Tue 26/05/20	2
4	Pembuatan kantor sementara dengan lantai plesteran	7 days	Wed 27/05/20	Thu 04/06/20	3
5	Pembuatan gudang semen dan alat-alat (sewa)	3 days	Fri 05/06/20	Tue 09/06/20	4
6	Pembuatan papan nama proyek	1 day	Wed 10/06/20	Wed 10/06/20	5
7	Pembuatan pagar sementara	4 days	Mon 11/05/20	Thu 14/05/20	START
8	PEKERJAAN GALIAN TANAH	14 days	Thu 11/06/20	Tue 30/06/20	
9	Galian Tanah	14 days	Thu 11/06/20	Tue 30/06/20	6
10	PEKERJAAN PONDASI	35 days	Wed 01/07/20	Mon 17/08/20	
11	Bekisting Cyclope	6 days	Wed 01/07/20	Wed 08/07/20	9
12	Pek. Beton K350	7 days	Thu 09/07/20	Fri 17/07/20	11
13	Bongkar Begesting	1 day	Sat 18/07/20	Sat 18/07/20	12
14	Bekisting Footplate	7 days	Mon 20/07/20	Tue 28/07/20	13
15	Pek. Beton K350	6 days	Wed 29/07/20	Wed 05/08/20	14
16	Bongkar Begesting	1 day	Thu 06/08/20	Thu 06/08/20	15
17	Urugan kembali bekas galian	7 days	Fri 07/08/20	Mon 17/08/20	16
18	PEKERJAAN STRUKTUR LANTAI 1	46 days	Wed 19/08/20	Wed 14/10/20	
19	PEKERJAAN SLOOF	14 days	Wed 19/08/20	Sat 05/09/20	
20	Bekisting	2 days	Wed 19/08/20	Thu 20/08/20	17
21	Pembesian	8 days	Fri 21/08/20	Tue 01/09/20	20
22	Pek. Beton K350	3 days	Wed 02/09/20	Fri 04/09/20	21
23	Bongkar Begesting	1 day	Sat 05/09/20	Sat 05/09/20	22
24	RABAT BETON	14 days	Wed 02/09/20	Thu 17/09/20	
25	Pek. Beton K350	14 days	Wed 02/09/20	Thu 17/09/20	20
26	PEKERJAAN KOLOM	14 days	Fri 18/09/20	Tue 06/10/20	
27	Bekisting	2 days	Tue 29/09/20	Wed 30/09/20	28
28	Pembesian	8 days	Fri 18/09/20	Mon 28/09/20	25
29	Pek. Beton K350	3 days	Thu 01/10/20	Mon 05/10/20	27
30	Bongkar Begesting	1 day	Tue 06/10/20	Tue 06/10/20	29
31	PEKERJAAN TANGGA LT 1	8 days	Wed 07/10/20	Wed 14/10/20	
32	Bekisting	1 day	Wed 07/10/20	Wed 07/10/20	23;27
33	Pembesian	3 days	Thu 08/10/20	Sat 10/10/20	32
34	Pek. Beton K350	2 days	Sun 11/10/20	Mon 12/10/20	33
35	Bongkar Begesting	1 day	Tue 13/10/20	Tue 13/10/20	34
36	PEKERJAAN STRUKTUR LANTAI 2	32 days	Thu 08/10/20	Mon 16/11/20	
37	PEKERJAAN PELAT	9 days	Thu 08/10/20	Fri 16/10/20	
38	Bekisting	4 days	Thu 08/10/20	Sun 11/10/20	30
39	Stutwerk untuk plat	4 days	Thu 08/10/20	Sun 11/10/20	30
40	Pembesian	5 days	Thu 08/10/20	Mon 12/10/20	30
41	Pek. Beton K350	3 days	Tue 13/10/20	Thu 15/10/20	40;38;39
42	Bongkar Begesting	1 day	Fri 16/10/20	Fri 16/10/20	41
43	PEKERJAAN BALOK	11 days	Thu 08/10/20	Mon 19/10/20	

44	Bekisting	4 days	Thu 08/10/20	Sun 11/10/20	30
45	Pembesian	4 days	Thu 08/10/20	Sun 11/10/20	30
46	Pek. Beton K350	3 days	Wed 14/10/20	Fri 16/10/20	45;44
47	Bongkar Begesting	2 days	Sat 17/10/20	Mon 19/10/20	46
48	PEKERJAAN KOLOM	14 days	Tue 20/10/20	Fri 06/11/20	
49	Bekisting	2 days	Fri 30/10/20	Mon 02/11/20	50
50	Pembesian	8 days	Tue 20/10/20	Thu 29/10/20	42;47
51	Pek. Beton K350	3 days	Tue 03/11/20	Thu 05/11/20	49
52	Bongkar Begesting	1 day	Fri 06/11/20	Fri 06/11/20	51
53	PEKERJAAN TANGGA	7 days	Sat 07/11/20	Mon 16/11/20	
54	Bekisting	1 day	Sat 07/11/20	Sat 07/11/20	52

55	Pembesian	3 days	Mon 09/11/20	Wed 11/11/20	54
56	Pek. Beton K350	2 days	Thu 12/11/20	Fri 13/11/20	55
57	Bongkar Begesting	1 day	Mon 16/11/20	Mon 16/11/20	56FF+1 day
58	PEKERJAAN STRUKTUR LANTAI 3	30 days	Sat 07/11/20	Tue 15/12/20	
59	PEKERJAAN PELAT	9 days	Sat 07/11/20	Wed 18/11/20	
60	Bekisting	5 days	Sat 07/11/20	Thu 12/11/20	52
61	Stutwerk untuk plat	4 days	Sat 07/11/20	Wed 11/11/20	52
62	Pembesian	5 days	Sat 07/11/20	Thu 12/11/20	52
63	Pek. Beton K350	3 days	Fri 13/11/20	Tue 17/11/20	62;60;61
64	Bongkar Begesting	1 day	Wed 18/11/20	Wed 18/11/20	63
65	PEKERJAAN BALOK	9 days	Sat 07/11/20	Wed 18/11/20	
66	Bekisting	4 days	Sat 07/11/20	Wed 11/11/20	52
67	Pembesian	4 days	Sat 07/11/20	Wed 11/11/20	52
68	Pek. Beton K350	3 days	Thu 12/11/20	Mon 16/11/20	66;67
69	Bongkar Begesting	1 day	Wed 18/11/20	Wed 18/11/20	68
70	PEKERJAAN KOLOM	14 days	Thu 19/11/20	Tue 08/12/20	
71	Bekisting	2 days	Tue 01/12/20	Wed 02/12/20	72
72	Pembesian	8 days	Thu 19/11/20	Mon 30/11/20	69;64
73	Pek. Beton K350	3 days	Thu 03/12/20	Mon 07/12/20	71
74	Bongkar Begesting	1 day	Tue 08/12/20	Tue 08/12/20	73
75	PEKERJAAN TANGGA	7 days	Wed 09/12/20	Tue 15/12/20	
76	Bekisting	1 day	Wed 09/12/20	Wed 09/12/20	74
77	Pembesian	3 days	Thu 10/12/20	Sat 12/12/20	76
78	Pek. Beton K350	2 days	Sun 13/12/20	Mon 14/12/20	77
79	Bongkar Begesting	1 day	Tue 15/12/20	Tue 15/12/20	78FF+1 day
80	PEKERJAAN STRUKTUR LANTAI 4	30 days	Wed 09/12/20	Fri 15/01/21	
81	PEKERJAAN PELAT	9 days	Wed 09/12/20	Thu 17/12/20	
82	Bekisting	4 days	Wed 09/12/20	Sat 12/12/20	74
83	Stutwerk untuk plat	4 days	Wed 09/12/20	Sat 12/12/20	74
84	Pembesian	5 days	Wed 09/12/20	Sun 13/12/20	74
85	Pek. Beton K350	3 days	Mon 14/12/20	Wed 16/12/20	82;83;84
86	Bongkar Begesting	1 day	Thu 17/12/20	Thu 17/12/20	85
87	PEKERJAAN BALOK	9 days	Wed 09/12/20	Thu 17/12/20	
88	Bekisting	4 days	Wed 09/12/20	Sat 12/12/20	74
89	Pembesian	4 days	Wed 09/12/20	Sat 12/12/20	74

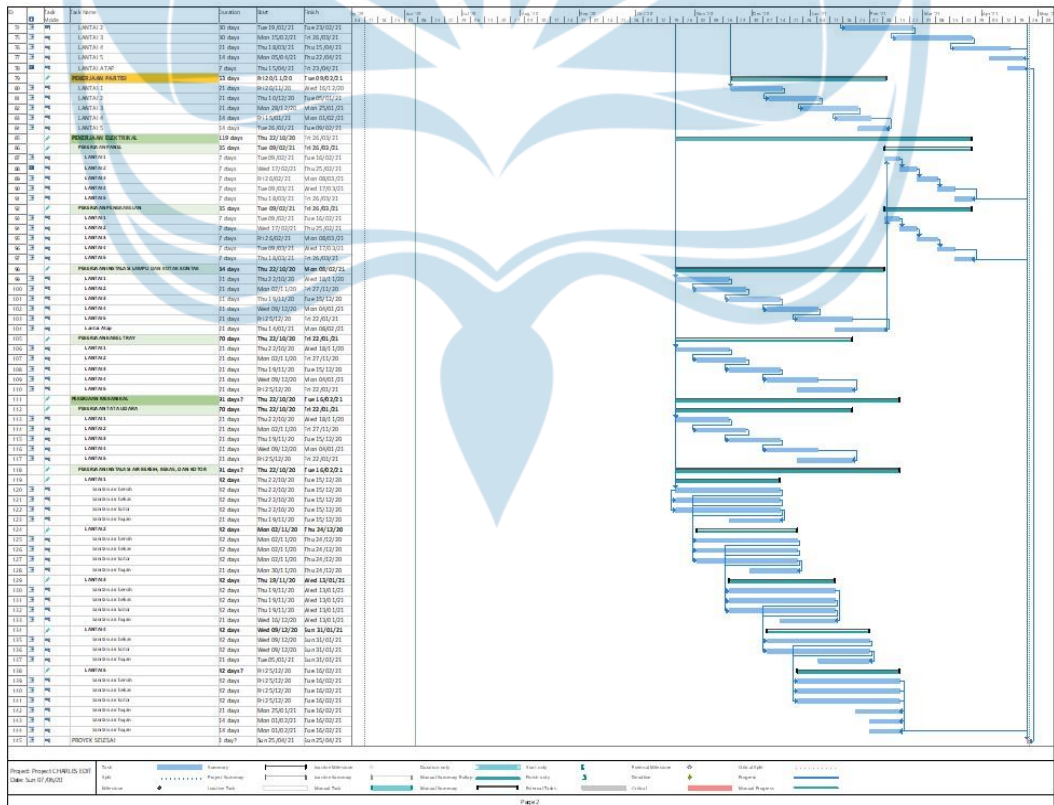
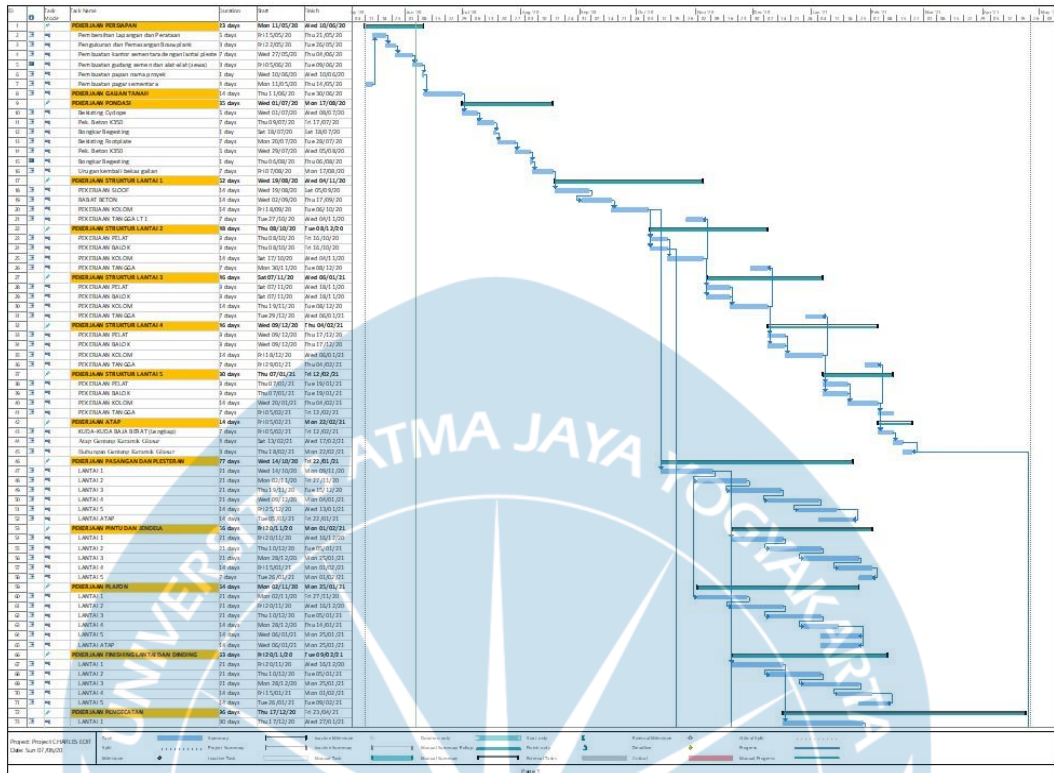
90	Pek. Beton K350	3 days	Sun 13/12/20	Tue 15/12/20	88;89
91	Bongkar Begesting	1 day	Thu 17/12/20	Thu 17/12/20	90
92	PEKERJAAN KOLOM	14 days	Fri 18/12/20	Wed 06/01/21	
93	Bekisting	2 days	Wed 30/12/20	Thu 31/12/20	94
94	Pembesian	8 days	Fri 18/12/20	Tue 29/12/20	86;91
95	Pek. Beton K350	3 days	Fri 01/01/21	Tue 05/01/21	93
96	Bongkar Begesting	1 day	Wed 06/01/21	Wed 06/01/21	95
97	PEKERJAAN TANGGA	7 days	Thu 07/01/21	Fri 15/01/21	
98	Bekisting	1 day	Thu 07/01/21	Thu 07/01/21	96
99	Pembesian	3 days	Fri 08/01/21	Tue 12/01/21	98
100	Pek. Beton K350	2 days	Wed 13/01/21	Thu 14/01/21	99
101	Bongkar Begesting	1 day	Fri 15/01/21	Fri 15/01/21	100FF+1 day
102	PEKERJAAN STRUKTUR LANTAI 5	30 days	Thu 07/01/21	Fri 12/02/21	
103	PEKERJAAN PELAT	9 days	Thu 07/01/21	Tue 19/01/21	
104	Bekisting	4 days	Thu 07/01/21	Tue 12/01/21	96
105	Stutwerk untuk plat	4 days	Thu 07/01/21	Tue 12/01/21	96
106	Pembesian	5 days	Thu 07/01/21	Wed 13/01/21	96
107	Pek. Beton K350	3 days	Thu 14/01/21	Mon 18/01/21	104;105;106
108	Bongkar Begesting	1 day	Tue 19/01/21	Tue 19/01/21	107
109	PEKERJAAN BALOK	9 days	Thu 07/01/21	Tue 19/01/21	
110	Bekisting	4 days	Thu 07/01/21	Tue 12/01/21	96
111	Pembesian	4 days	Thu 07/01/21	Tue 12/01/21	96
112	Pek. Beton K350	3 days	Wed 13/01/21	Fri 15/01/21	110
113	Bongkar Begesting	1 day	Tue 19/01/21	Tue 19/01/21	112

114	PEKERJAAN KOLOM	14 days	Wed 20/01/21	Thu 04/02/21	
115	Bekisting	2 days	Sat 30/01/21	Sun 31/01/21	116
116	Pembesian	8 days	Wed 20/01/21	Fri 29/01/21	113;108
117	Pek. Beton K350	3 days	Mon 01/02/21	Wed 03/02/21	115
118	Bongkar Begesting	1 day	Thu 04/02/21	Thu 04/02/21	117
119	PEKERJAAN TANGGA	7 days	Fri 05/02/21	Fri 12/02/21	
120	Bekisting	1 day	Fri 05/02/21	Fri 05/02/21	118
121	Pembesian	3 days	Sat 06/02/21	Tue 09/02/21	120
122	Pek. Beton K350	2 days	Wed 10/02/21	Thu 11/02/21	121
123	Bongkar Begesting	1 day	Fri 12/02/21	Fri 12/02/21	122FF+1 day
124	PEKERJAAN ATAP	14 days	Fri 05/02/21	Mon 22/02/21	
125	KUDA-KUDA BAJA BERAT (Lengkap)	7 days	Fri 05/02/21	Fri 12/02/21	118
126	Atap Genteng Keramik Glasur	4 days	Sat 13/02/21	Wed 17/02/21	125
127	Bubungan Genteng Keramik Glasur	3 days	Thu 18/02/21	Mon 22/02/21	126FF+3 days
128	PEKERJAAN PASANGAN DAN PLESTERAN	77 days	Wed 14/10/20	Fri 22/01/21	
129	LANTAI 1	21 days	Wed 14/10/20	Mon 09/11/20	35
130	LANTAI 2	21 days	Mon 02/11/20	Fri 27/11/20	129FS-7 days
131	LANTAI 3	21 days	Thu 19/11/20	Tue 15/12/20	130FS-7 days
132	LANTAI 4	21 days	Wed 09/12/20	Mon 04/01/21	131FS-7 days
133	LANTAI 5	14 days	Fri 25/12/20	Wed 13/01/21	132FS-7 days
134	LANTAI ATAP	14 days	Tue 05/01/21	Fri 22/01/21	133FF+7 days
135	PEKERJAAN PINTU DAN JENDELA	56 days	Fri 20/11/20	Mon 01/02/21	
136	LANTAI 1	21 days	Fri 20/11/20	Wed 16/12/20	129FS+7 days

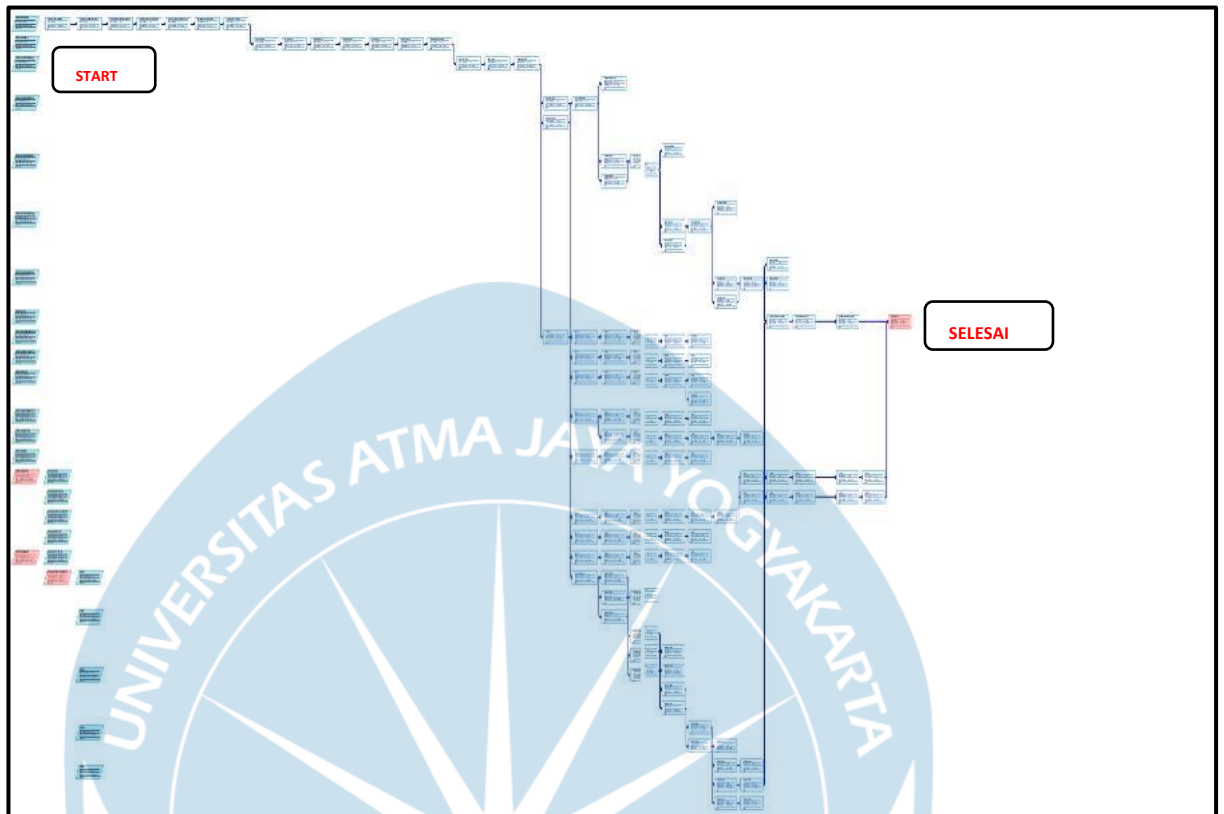
137	LANTAI 2	21 days	Thu 10/12/20	Tue 05/01/21	136FS-7 days
138	LANTAI 3	21 days	Mon 28/12/20	Mon 25/01/21	137FS-7 days
139	LANTAI 4	14 days	Fri 15/01/21	Mon 01/02/21	138FS-7 days
140	LANTAI 5	7 days	Tue 26/01/21	Mon 01/02/21	139FF
141	PEKERJAAN PLAFON	64 days	Mon 02/11/20	Mon 25/01/21	
142	LANTAI 1	21 days	Mon 02/11/20	Fri 27/11/20	129FS-7 days
143	LANTAI 2	21 days	Fri 20/11/20	Wed 16/12/20	142FS-7 days
144	LANTAI 3	21 days	Thu 10/12/20	Tue 05/01/21	143FS-7 days
145	LANTAI 4	14 days	Mon 28/12/20	Thu 14/01/21	144FS-7 days
146	LANTAI 5	14 days	Wed 06/01/21	Mon 25/01/21	145FF+7 days
147	LANTAI ATAP	14 days	Wed 06/01/21	Mon 25/01/21	145FF+7 days
148	PEKERJAAN FINISHING LANTAI DAN DINDING	63 days	Fri 20/11/20	Tue 09/02/21	
149	LANTAI 1	21 days	Fri 20/11/20	Wed 16/12/20	129FS+7 days
150	LANTAI 2	21 days	Thu 10/12/20	Tue 05/01/21	149FS-7 days
151	LANTAI 3	21 days	Mon 28/12/20	Mon 25/01/21	150FS-7 days
152	LANTAI 4	14 days	Fri 15/01/21	Mon 01/02/21	151FS-7 days
153	LANTAI 5	14 days	Tue 26/01/21	Tue 09/02/21	152FF+7 days
154	PEKERJAAN PENGECATAN	90 days	Thu 17/12/20	Thu 15/04/21	
155	LANTAI 1	30 days	Thu 17/12/20	Wed 27/01/21	149
156	LANTAI 2	30 days	Tue 19/01/21	Tue 23/02/21	155FS-7 days
157	LANTAI 3	30 days	Mon 15/02/21	Fri 26/03/21	156FS-7 days
158	LANTAI 4	21 days	Thu 18/03/21	Thu 15/04/21	157FS-7 days
159	LANTAI 5	14 days	Mon 29/03/21	Thu 15/04/21	158FF
160	LANTAI ATAP	7 days	Wed 07/04/21	Thu 15/04/21	159FF
161	PEKERJAAN PARTISI	63 days	Fri 20/11/20	Tue 09/02/21	
162	LANTAI 1	21 days	Fri 20/11/20	Wed 16/12/20	129FS+7 days
163	LANTAI 2	21 days	Thu 10/12/20	Tue 05/01/21	162FS-7 days
164	LANTAI 3	21 days	Mon 28/12/20	Mon 25/01/21	163FS-7 days
165	LANTAI 4	14 days	Fri 15/01/21	Mon 01/02/21	164FS-7 days
166	LANTAI 5	14 days	Tue 26/01/21	Tue 09/02/21	165FF+7 days
167	PEKERJAAN ELEKTRIKAL	119 days	Thu 22/10/20	Fri 26/03/21	
168	PEKERJAAN PANEL	35 days	Tue 09/02/21	Fri 26/03/21	
169	LANTAI 1	7 days	Tue 09/02/21	Tue 16/02/21	186
170	LANTAI 2	7 days	Wed 17/02/21	Thu 25/02/21	169
171	LANTAI 3	7 days	Fri 26/02/21	Mon 08/03/21	170
172	LANTAI 4	7 days	Tue 09/03/21	Wed 17/03/21	171
173	LANTAI 5	7 days	Thu 18/03/21	Fri 26/03/21	172
174	PEKERJAAN PENGABELAN	35 days	Tue 09/02/21	Fri 26/03/21	
175	LANTAI 1	7 days	Tue 09/02/21	Tue 16/02/21	186
176	LANTAI 2	7 days	Wed 17/02/21	Thu 25/02/21	175
177	LANTAI 3	7 days	Fri 26/02/21	Mon 08/03/21	176
178	LANTAI 4	7 days	Tue 09/03/21	Wed 17/03/21	177
179	LANTAI 5	7 days	Thu 18/03/21	Fri 26/03/21	178
180	PEKERJAAN INSTALASI LAMPU DAN KOTAK KONTAK	84 days	Thu 22/10/20	Mon 08/02/21	
181	LANTAI 1	21 days	Thu 22/10/20	Wed 18/11/20	35FS+7 days
182	LANTAI 2	21 days	Mon 02/11/20	Fri 27/11/20	181FS-14 days
183	LANTAI 3	21 days	Thu 19/11/20	Tue 15/12/20	182FS-7 days
184	LANTAI 4	21 days	Wed 09/12/20	Mon 04/01/21	183FS-7 days

185	LANTAI 5	21 days	Fri 25/12/20	Fri 22/01/21	184FS-7 days
186	Lantai Atap	21 days	Thu 14/01/21	Mon 08/02/21	185FF+14 days
187	PEKERJAAN KABEL TRAY	70 days	Thu 22/10/20	Fri 22/01/21	
188	LANTAI 1	21 days	Thu 22/10/20	Wed 18/11/20	35FS+7 days
189	LANTAI 2	21 days	Mon 02/11/20	Fri 27/11/20	188FS-14 days
190	LANTAI 3	21 days	Thu 19/11/20	Tue 15/12/20	189FS-7 days
191	LANTAI 4	21 days	Wed 09/12/20	Mon 04/01/21	190FS-7 days
192	LANTAI 5	21 days	Fri 25/12/20	Fri 22/01/21	191FF+14 days
193	PEKERJAAN MEKANIKAL	91 days	Thu 22/10/20	Tue 16/02/21	
194	PEKERJAAN TATA UDARA	70 days	Thu 22/10/20	Fri 22/01/21	
195	LANTAI 1	21 days	Thu 22/10/20	Wed 18/11/20	35FS+7 days
196	LANTAI 2	21 days	Mon 02/11/20	Fri 27/11/20	195FS-14 days
197	LANTAI 3	21 days	Thu 19/11/20	Tue 15/12/20	196FS-7 days
198	LANTAI 4	21 days	Wed 09/12/20	Mon 04/01/21	197FS-7 days
199	LANTAI 5	21 days	Fri 25/12/20	Fri 22/01/21	198FF+14 days
200	PEKERJAAN INSTALASI AIR BERSIH, BEKAS, DAN KOTOR	91 days	Thu 22/10/20	Tue 16/02/21	
201	LANTAI 1	42 days	Thu 22/10/20	Tue 15/12/20	
202	Sanitasi air bersih	42 days	Thu 22/10/20	Tue 15/12/20	35FS+7 days
203	Sanitasi air bekas	42 days	Thu 22/10/20	Tue 15/12/20	35FS+7 days
204	Sanitasi air kotor	42 days	Thu 22/10/20	Tue 15/12/20	35FS+7 days
205	Sanitasi air hujan	21 days	Thu 19/11/20	Tue 15/12/20	35FF+49 days
206	LANTAI 2	42 days	Mon 02/11/20	Thu 24/12/20	
207	Sanitasi air bersih	42 days	Mon 02/11/20	Thu 24/12/20	202FS-35 days
208	Sanitasi air bekas	42 days	Mon 02/11/20	Thu 24/12/20	203FS-35 days
209	Sanitasi air kotor	42 days	Mon 02/11/20	Thu 24/12/20	204FS-35 days
210	Sanitasi air hujan	21 days	Mon 30/11/20	Thu 24/12/20	209FF
211	LANTAI 3	42 days	Thu 19/11/20	Wed 13/01/21	
212	Sanitasi air bersih	42 days	Thu 19/11/20	Wed 13/01/21	207FS-28 days
213	Sanitasi air bekas	42 days	Thu 19/11/20	Wed 13/01/21	208FS-28 days
214	Sanitasi air kotor	42 days	Thu 19/11/20	Wed 13/01/21	209FS-28 days
215	Sanitasi air hujan	21 days	Wed 16/12/20	Wed 13/01/21	212FF
216	LANTAI 4	42 days	Wed 09/12/20	Sun 31/01/21	
217	Sanitasi air bekas	42 days	Wed 09/12/20	Sun 31/01/21	213FS-28 days
218	Sanitasi air kotor	42 days	Wed 09/12/20	Sun 31/01/21	214FS-28 days
219	Sanitasi air hujan	21 days	Tue 05/01/21	Sun 31/01/21	218FF
220	LANTAI 5	42 days	Fri 25/12/20	Tue 16/02/21	
221	Sanitasi air bersih	42 days	Fri 25/12/20	Tue 16/02/21	
222	Sanitasi air bekas	42 days	Fri 25/12/20	Tue 16/02/21	217FS-28 days
223	Sanitasi air kotor	42 days	Fri 25/12/20	Tue 16/02/21	218FS-28 days
224	Sanitasi air hujan	21 days	Mon 25/01/21	Tue 16/02/21	223FF
225	Sanitasi air hujan	14 days	Mon 01/02/21	Tue 16/02/21	221FF
226	Sanitasi air hujan	14 days	Mon 01/02/21	Tue 16/02/21	222FF

Bar chart dari MS Project



Network Diagram dari Ms Project



Cashflow dari pembangunan gedung filsafat UGM

