

BAB V

KESIMPULAN DAN SARAN

KESIMPULAN

Setelah dilihat dari setiap lapis sejarahnya di Kawasan Pecinan Parakan, dalam hal ini dibagi menjadi 3 (tiga) lapis sejarah/tissue:

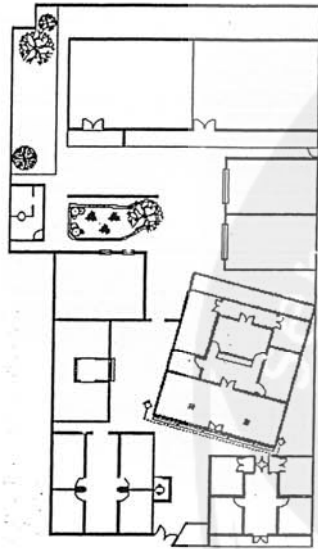
1. Tahun 1700 – 1911,
Hunian sudah ada bangunan rumah arsitektur cina, pasar sebagai fasilitas perdagangan, tempat jual beli kebutuhan sehari-hari dan Klenteng sebagai tempat peribadatan, mesti tak sebagus kini sudah dibangun di sana.
2. 1911 – 1945,
Pola sama seperti di atas, sama juga strukturnya, mesti ada penambahan di sana-sini.
3. 1945 – sekarang,
Pola sama, pembangunan klenteng baru sudah dilakukan

Pola yang sama pada setiap masanya :

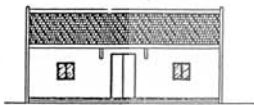
Klenteng - Pasar - Hunian

Elemen-elemen yang berubah:

1. Perubahan Fungsi dari hunian menjadi kawasan perdagangan
2. Pelebaran jalan
3. Munculnya jalan/gang baru
4. Munculnya Ruko



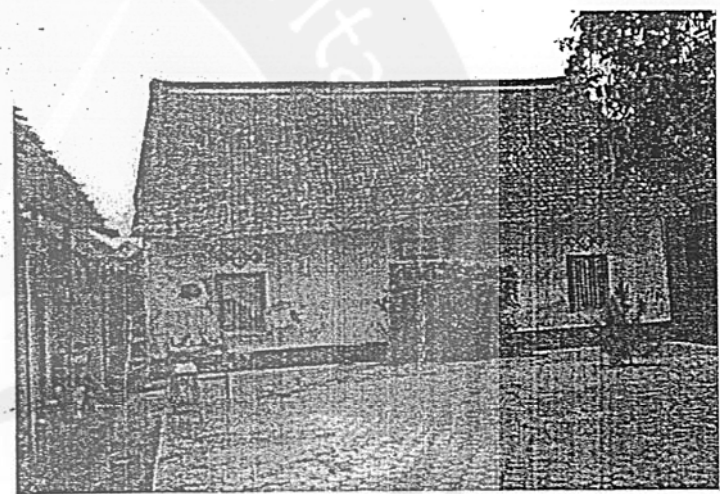
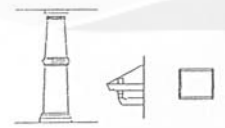
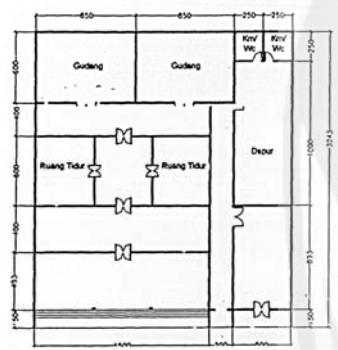
DENAH

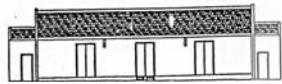
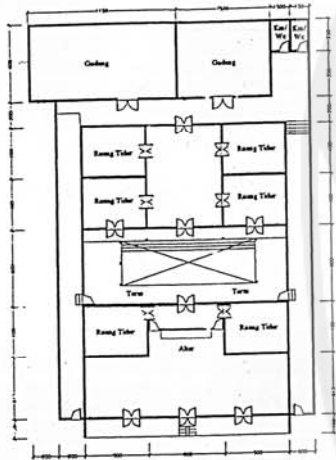


TAMPAK



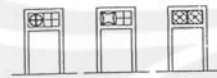
serviens in lumine verita



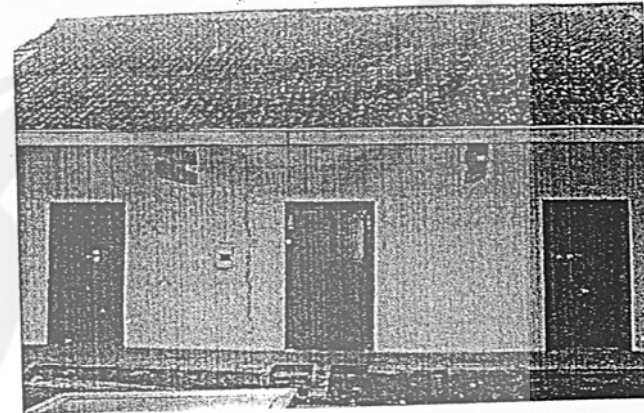
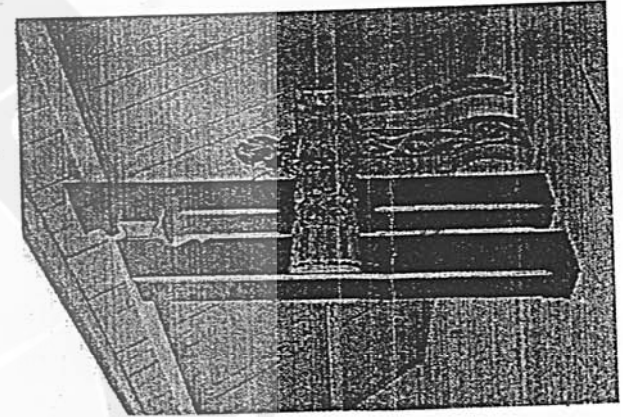
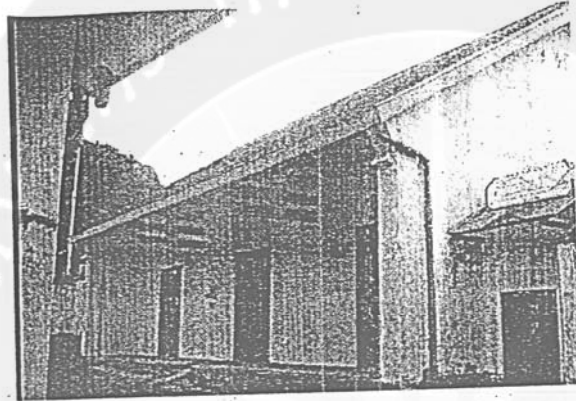


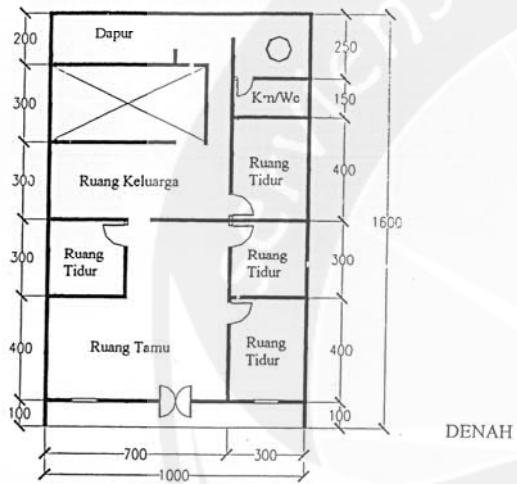
TAMPAK

DENAH

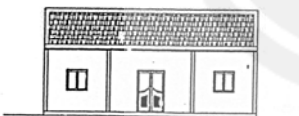
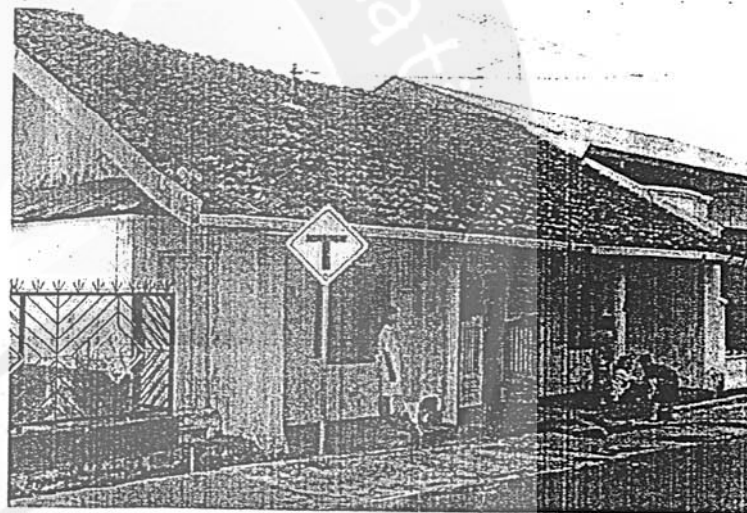


ORNAMEN





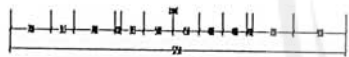
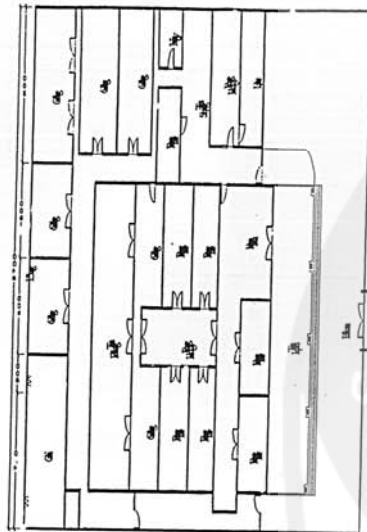
DENAH



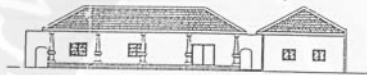
TAMPAK



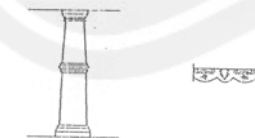
ORNAMEN



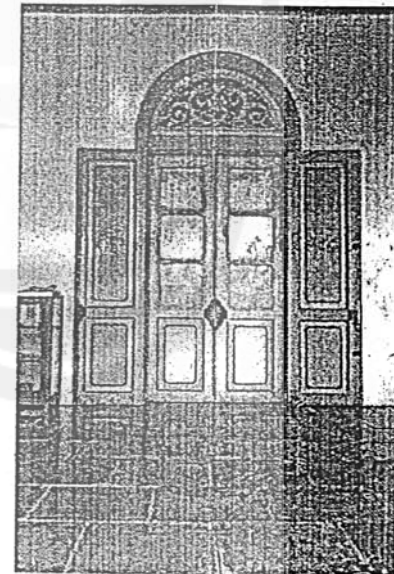
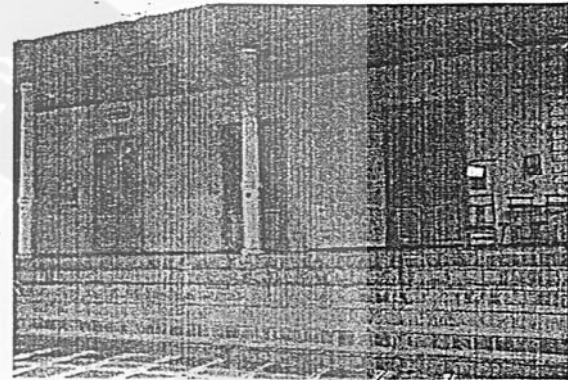
DENAH

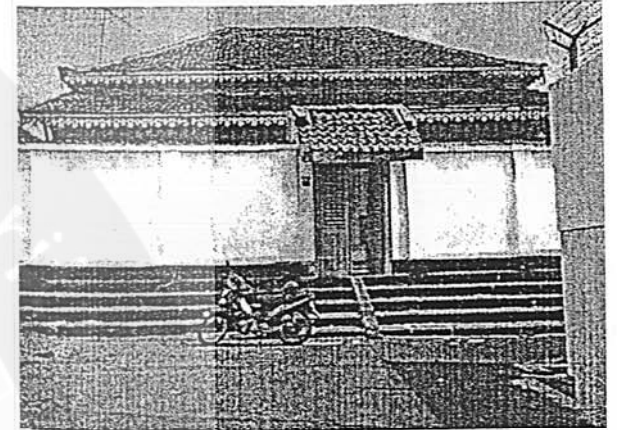
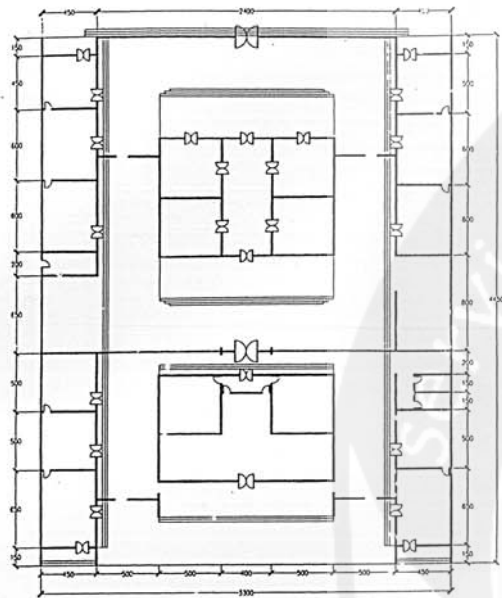


TAMPAK

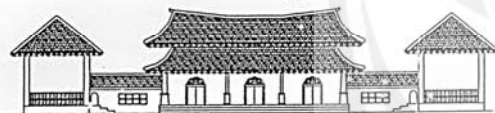


ORNAMEN

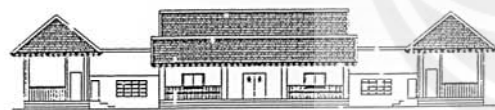




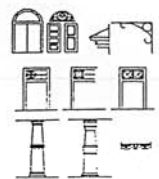
DENAH



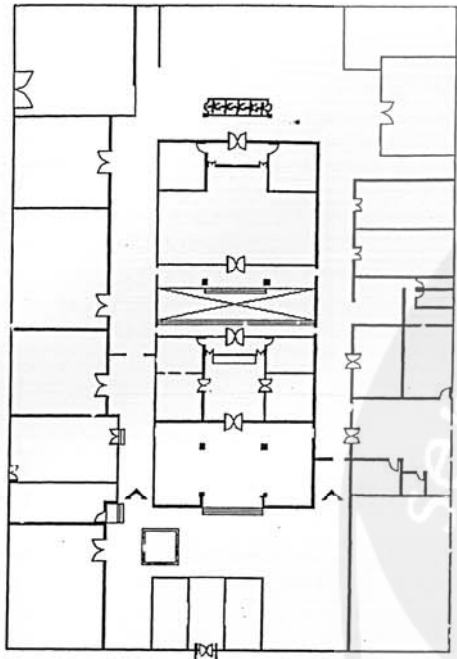
TAMPAK DEPAN



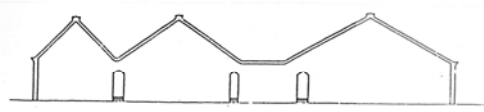
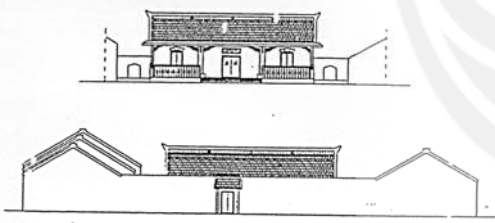
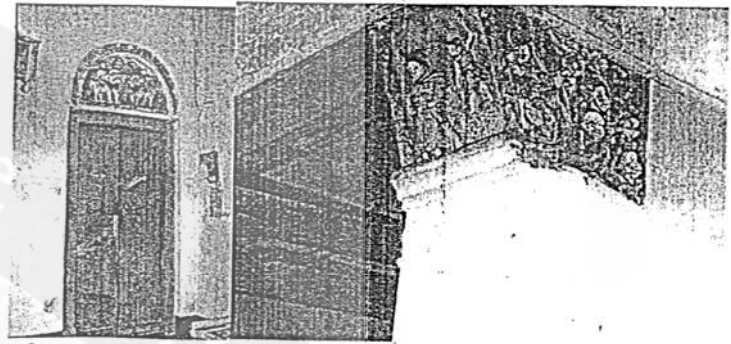
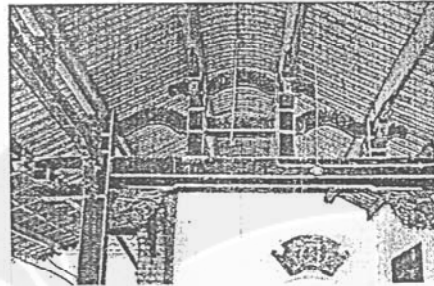
TAMPAK BELAKANG



ORNAMEN

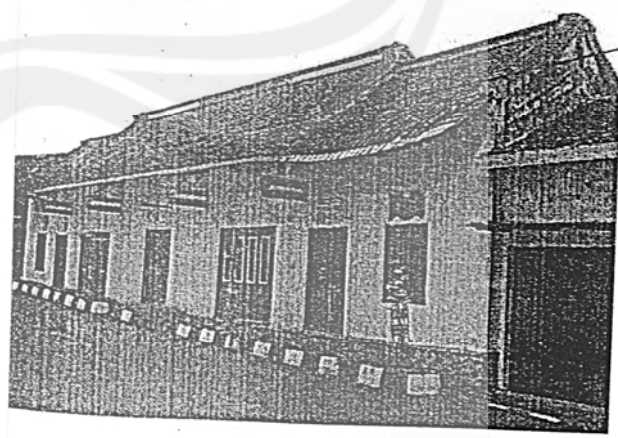


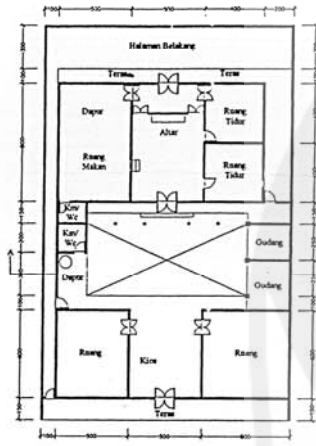
DENAH



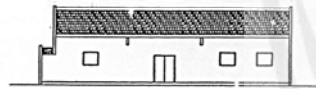
TAMPAK

Potongan Beranda

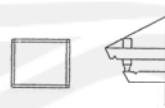




DENAH

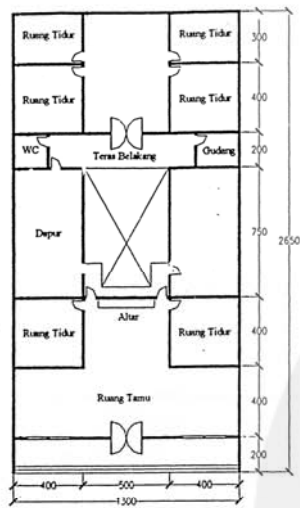


TAMPAK

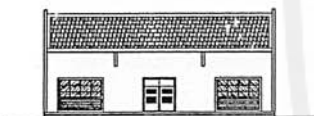


ORNAMEN





DENAH



TAMPAK



ORNAMEN

