

BAB V

KESIMPULAN DAN SARAN

A. Kesimpulan

Berdasarkan hasil penelitian ,pembahasan dan implementasi maka dapat disimpulkan :

1. Pembangunan *data warehouse* pada Badan Kepegawaian Daerah Kabupaten Boyolali merupakan hal yang sangat penting, mengingat bahwa otoritas dan kebijakan bidang kepegawaian pada pemerintah daerah adalah BKD.
2. Sumber data yang digunakan dalam *data warehouse*, harus di teliti relasi dan konsistensi dari tiap sumber data yang digunakan .
3. *Data Warehouse* yang dibangun dapat di akses dengan menggunakan berbagai macam perangkat lunak. Baik perangkat lunak yang dibuat sendiri dengan bahasa pemrograman, atau perangkat lunak yang khusus digunakan untuk melakukan analisis data.
4. Peningkatan ketrampilan bagi para pengelola Sistem Informasi pada Pemerintah Daerah harus selalu ditingkatkan. Ketrampilan yang digunakan untuk mengelola data sampai dengan pembuatan *data warehouse*, yang meliputi Pemrograman Bahasa Basic, Penggunaan Crystal Report, dan Penggunaan Microsoft Analysis Services. Sehingga tidak tergantung penggunaan aplikasi tertentu. Aplikasi yang telah ada dapat dimanfaatkan sehingga penggunaan anggaran untuk kepentingan sistem informasi menjadi efisien.

B. Saran

Dengan melihat pentingnya pembangunan *data warehouse*, maka diperlukan usaha untuk selalu mengupdate data secara teratur dan benar isi datanya sehingga kualitas informasi yang dihasilkan Data Warehouse dan aplikasi yang dipergunakan untuk analisis data tidak menimbulkan bias.



Daftar Pustaka

- _____, Conceptual Data Warehouse Design, <http://www.lionbridge.com/NR/rdonlyres/3C791090-AB72-4B00-A846-C03A3B4D21BF/0/DataWarehousingFrame.pdf>, Diakses tanggal: 10/10/2006
- _____, Data Warehouse, http://en.wikipedia.org/wiki/Data_Warehouse, Diakses tanggal: 21/11/2006
- _____, Dimension Modeling and E-R Modeling In The Data Warehouse, <http://www.dkms.com/papers/dmerdw.pdf>, Diakses tanggal: 21/11/2006
- _____, Is ER Modeling Hazardous to DSS, <http://www.dbmsmag.com/9510d05.html>, Diakses tanggal: 28/11/2006
- _____, Microsoft Data Warehouse Framework, <http://www.dkms.com/papers/dmerdw.pdf>, Diakses tanggal: 21/11/2006
- Chenoweth, Tim and his team, 2006, "Seven Key Interventions for Data Warehouse Succes", Communication s of the ACM January 2006/Vol. 49 No.1
- Efrem G. Mallach., 2000, Decission Support and Data Warehouse System, International Editions
- Inmon, W.H., 2002, Building the Data Warehouse, Third Edition, John Wiley and Son, Inc, Canada
- Jacik, Naned, 2006, "Modeling Strategies and Alternatives for Data Warehouse Project", Communications of the ACM April 2006/Vol. 49 No. 4 .
- John Ward and Joe Peppard, Strategic Planning for Information Systems, Third Edition, , John Wiley & Son, Inc, UK

Kenneth C. Laudon – Jane P. Laudon , 2006, Management Information System, Managing The Digital Firm, Ninth Edition

Poniah, Paulraj , 2001 , Data Warehousing Fundamentals: a Comprehensive Guide for IT Professionals, John Wiley & Son, Inc, Canada

Kimball, Ralph, The Data Warehouse ETL Toolkit, Practical Techniques for Extracting, Cleaning, Conforming, Delivering Data, , John Wiley & Son, Inc, Canada

Peraturan Perundangan

Undang-undang Nomor 48 Tahun 1999 tentang Perubahan atas Undang-undang Nomor 8 Tahun 1974 tentang Pokok –pokok Kepegawaian

Peraturan Pemerintah Nomor 22 Tahun 1999 tentang Pemerintahan Daerah

Peraturan Pemerintah Nomor 25 Tahun 1999 tentang Perimbangan Keuangan antara Pemerintah Pusat dan Daerah

Kumpulan Peraturan Daerah Kabupaten Boyolali, Bagian Ukum dan Organisasi Pemerintah Kabupaten Boyolali , 2001

LAMPIRAN A

LISTING PROGRAM ETL ISIDW

```

Dim condbA As ADODB.Connection
Dim emprssetA, emprssetb, emprssetc, emprssetd, emprssete, emprssetf As ADODB.Recordset
Dim recset1 As ADODB.Recordset
Dim empcmdA As ADODB.Command
Dim SQLbaca, SQLtulis As String
Dim mbrs1, mtotal, mtotal1 As Integer
Dim mtunjb As Long
Private Sub cmdbatal_Click()
'---
Unload Me
End Sub
Private Sub cmdproses_Click()
'---
'status pns aktif
msts1 = "1"
'-----
'hitung jumlah masemp
'-----
Set emprssetA = New ADODB.Recordset
SQLhtg = "Select count(*) as jumdata from vpns"
Set emprssetA = condbA.Execute(SQLhtg, , adCmdText)

If emprssetA.EOF Then
mtotal = 0
Else
mtotal = emprssetA("jumdata")
End If
'kotak2.Width = 1
lmasemp.Caption = mtotal
'-----

'-----
'mulai tranfer masemp ke masdw
'-----

Set emprssetb = New ADODB.Recordset
SQLbaca1 = "Select * from vpns "
Set emprssetb = condbA.Execute(SQLbaca1, , adCmdText)

Set emprssetb = New ADODB.Recordset
SQLbaca1 = "Select * from vpns "
Set emprssetb = condbA.Execute(SQLbaca1, , adCmdText)

Do Until emprssetb.EOF

'----- pindah ke variabel memory
mnip = emprssetb("emp01")

If IsNull(emprssetb("emp02b")) Or Len(Trim(emprssetb("emp02b"))) = 0 Then
mgldpn = ""
Else
mgldpn = Trim(emprssetb("emp02b")) + ""
End If

If IsNull(emprssetb("emp02c")) Or Len(Trim(emprssetb("emp02c"))) = 0 Then
mglbik = ""
Else
mglbik = " " + emprssetb("emp02c")
End If

mnama = mgldpn + Trim(emprssetb("emp02a")) + mglbik

mkotalhr = emprssetb("KotaLhr")
mkdktlhr = emprssetb("emp03a")
'----- konversi tanggal lahir

mtglhr = Mid(emprssetb("emp03b"), 4, 2) + "-" + Left(emprssetb("emp03b"), 2) + "-" + Right(emprssetb("emp03b"), 4)

'-----

mkdkel = emprssetb("emp04")
mkelam = emprssetb("jnsKelamin")
mkdkwn = emprssetb("emp05")
mkawin = emprssetb("stskawin")
mkdagm = emprssetb("emp06")
magama = emprssetb("agama")

```

```

If IsNull(emp08a) Then
    malam = "."
Else
    malam = emp08a
End If

mkdka = emp08b
mktalm = emp08c
mkdjp = emp17b
mjnp = emp17c
mkdp = emp17a
mnp = emp17d
mlulus = emp17d
mkdins = emp11a
mnmns = emp11b
mkdunt = emp11c
mnmunt = emp11d
mkdgo = emp14f
mgoru = emp14g
mkdgo = emp14f
mgoru = emp14g
meselon = emp14e
If IsNull(emp14d) Then
    mthms = "00"
Else
    mthms = emp14d
End If
If IsNull(emp14e) Then
    mblms = "00"
Else
    mblms = emp14e
End If
'----- konversi tmt kenaikan pangkat

If IsNull(emp14c) Or Len(Trim(emp14c)) < 10 Then
    mtmkp = "01-01-1900"
Else
    If Val(Right(emp14c, 4)) < 1900 Then
        mtmkp = "01-01-1900"
    Else
        'mtglhr = Mid(emp03b, 4, 2) + "-" + Left(emp03b, 2) + "-" + Right(emp03b, 4)
        mtmkp = Mid(emp14c, 4, 2) + "-" + Left(emp14c, 2) + "-" + Right(emp14c, 4)
    End If
End If

'-----
mjnjab = emp15f
mnmjab1 = emp15b
mnmjab2 = emp15c
mkdjab1 = emp15g
mnmnjab = emp15d

'----- konversi tmt jabatan

If mjnjab = "2" Then
    If IsNull(emp14c) Or Len(Trim(emp14c)) < 10 Then
        mtmtjb = "01-01-1900"
    Else
        If Val(Right(emp14c, 4)) < 1900 Then
            mtmtjb = "01-01-1900"
        Else
            mtmtjb = Mid(emp14c, 4, 2) + "-" + Left(emp14c, 2) + "-" + Right(emp14c, 4)
            'mtmtjb = Mid(emp14c, 4, 2) + "-" + Left(emp14c, 2) + "-" + Right(emp14c, 4)
        End If
    End If
Else
    If IsNull(emp15d) Or Len(Trim(emp15d)) < 10 Then
        mtmtjb = "01-01-1900"
    Else
        'If Val(Right(emp15d, 4)) < 1900 Then
        'mtmtjb = "01-01-1900"
        'Else
        'mtglhr = Mid(emp03b, 4, 2) + "-" + Left(emp03b, 2) + "-" + Right(emp03b, 4)
        mtmtjb = Mid(emp15d, 4, 2) + "-" + Left(emp15d, 2) + "-" + Right(emp15d, 4)
        'End If
    End If
End If

'----- hitung gaji masa kp
mgabgoth = emp14f + emp14d

```

```

'----- carigaji kp
Set emprsetA = New ADODB.Recordset
SQLgaji1 = "Select * from refgaji where rgaji01="" & mgabgolth & ""
Set emprsetf = condbA.Execute(SQLgaji1, , adCmdText)
If emprsetf.EOF Then
  mgaji1 = 0
Else
  mgaji1 = emprsetf("rgaji02_ba")
End If

```

```

'----- hitung gaji desember 2006

```

```

mkthkp = emprsetb("emp14d")
mkbikp = emprsetb("emp14e")

```

```

mhtmtkp = Val(Right(emprsetb("emp14c"), 4))
mbtmtkp = Val(Mid(emprsetb("emp14c"), 4, 2))

```

```

mhbl = mkbikp + (12 - mbtmtkp)
mhth = 2007 - mhtmtkp

```

```

If mhbl >= 12 Then
  mblakh = mhbl - 12
  mthakh = (mhth + Val(mkthkp)) + 1
Else
  mblakh = mhbl
  mthakh = mhth + Val(mkthkp)
End If

```

```

If mthakh < 10 Then
  mtahun = "0" + Trim(Str(mthakh))
Else
  mtahun = Trim(Str(mthakh))
End If

```

```

mgabakh = emprsetb("emp14f") + mtahun

```

```

'carigaji akhir
Set emprsetA = New ADODB.Recordset
SQLgaji1 = "Select * from refgaji where rgaji01="" & mgabakh & ""
Set emprsetf = condbA.Execute(SQLgaji1, , adCmdText)
If emprsetf.EOF Then
  mgaji2 = 0
Else
  mgaji2 = emprsetf("rgaji02_ba")
End If

```

```

mkdesl = emprsetb("emp22b")
meseln = emprsetb("eselon")
If IsNull(emprsetb("tunjab")) Then
  mtunjb = 0
Else
  mtunjb = emprsetb("tunjab")
End If

```

```

If IsNull(emprsetb("tunfung")) Then
  mtunfung = 0
Else
  mtunfung = emprsetb("tunfung")
End If

```

```

masal1 = "masemp"

```

```

'-----
' pindah ke file masdw
'-----

```

```

Set emprsetx = New ADODB.Recordset

```

```

SQLcaridw = "select * from masdw where dw01="" & mnp & ""

```

```

Set emprsetx = condbA.Execute(SQLcaridw, , adCmdText)

```

```

If emprsetx.EOF Then
  mtambah = "1"
Else
  mtambah = "0"
End If

```

```

If mtambah = "1" Then
    mtotal1 = mtotal1 + 1
    Set emprssetd = New ADODB.Recordset
    SQLtulisulang = "insert into masdw (dw01,dw02,
dw03a1,dw03a2,dw03b,dw04a,dw04b,dw05a,dw05b,dw06a,dw06b,dw07a,dw07b1 "
    & ",dw07b2, dw08a1,dw08a2,dw08b1,dw08b2,dw08c,dw09a1,dw09a2,dw09b1,dw09b2,dw10a1,dw10a2, dw10b, dw10c, dw10d
"
    & ",dw11a1,dw11a2,dw11b1,dw11b2,dw11b3,dw11c,dw11d1,dw11d2,dw12a,dw12b,dw13a,dw13b,dw14,dwsts) Values (" &
mnp & ", " & mnama & ", " & mkdktlhr & " " "
    & ", " & mkotalhr & ", " & mtglhr & ", " & mkdkel & ", " & mkelam & ", " & mkdkwn & ", " & mkawin & " "
    & ", " & mkdagm & ", " & magama & ", " & malam & ", " & mkdkta & ", " & mktalm & ", " & mkdjpn & ", " & mjnpn & " "
    & ", " & mkdpn & ", " & mnmpn & ", " & mlulus & ", " & mkdins & ", " & mnmins & ", " & mkdunt & ", " & mnmunt & " "
    & ", " & mkdgol & ", " & mgolru & ", " & mthnms & ", " & mblnms & ", " & mtmtkp & ", " & mjnjab & ", " & mnmnjab & ", " &
mkdjab1 & " "
    & ", " & mnmnjab2 & ", " & mnmnjab1 & ", " & mtmtjb & ", " & mkdesl & ", " & meselon & ", " & mtunjb & ", " & mtunfung & ", " &
mgaji1 & ", " & mgaji2 & ", " & masal1 & ", " & msts1 & " "
    Set emprssetd = condbA.Execute(SQLtulisulang, , adCmdText)
    End If

    emprssetb.MoveNext

    progresbar

Loop

ltranmasemp.Caption = mtotal
kotak11.BackColor = &HFF00&
kotak2.Width = 1

'-----'
' verifikasi data dos
'-----'

mtotal1 = 0
Set emprssetA = New ADODB.Recordset
SQLhtg = "Select count(*) as jumdata from vdos"
Set emprssetA = condbA.Execute(SQLhtg, , adCmdText)
If emprssetA.EOF Then
    mtotal = 0
Else
    mtotal = emprssetA("jumdata")
End If

lmasdos.Caption = mtotal

'-----' mulai verifikasi masdos
mtotal1 = 0

Set emprssetc = New ADODB.Recordset
SQLbaca2 = "Select * from vdos"
Set emprssetc = condbA.Execute(SQLbaca2, , adCmdText)

Do Until emprssetc.EOF

'-----'
' cari di masdw
'-----'
MDOSNIP = emprssetc("nip")
mdostmb = emprssetc("tmb")
'-----'
MNIPd = emprssetc("nip")
mnamad = Trim(emprssetc("nama"))

mtmtbd = emprssetc("tmb")
mkgold = emprssetc("golbx")
mgolrd = Trim(emprssetc("golrudox"))
mskthd = emprssetc("msthb")
mskbld = emprssetc("msblb")

muntd = Trim(emprssetc("uk1"))
mjabtd = Trim(emprssetc("jabbar"))
mgajid = emprssetc("gaji")
If IsNull(emprssetc("pddk")) Then
    mskld = ""
Else
    mskld = emprssetc("pddk")
End If

```

```

'----- ubah tanggal lahir
If IsNull(emprsetc("tglhr")) Then
  mtglhd = "01-01-1900"
Else
  mblnh = Trim(Str(Month(emprsetc("tglhr"))))
  mtglih = Trim(Str(Day(emprsetc("tglhr"))))
  mthlhr = Trim(Str(Year(emprsetc("tglhr"))))
  mtglhd = mblnh + "-" + mtglih + "-" + mthlhr
End If
'----- ubah tmt kenaikan pangkat

```

```

If IsNull(emprsetc("tmb")) Then
  mtglhd = "01-01-1900"
Else
  mblnt = Trim(Str(Month(emprsetc("tmb"))))
  mtgli = Trim(Str(Day(emprsetc("tmb"))))
  mthlt = Trim(Str(Year(emprsetc("tmb"))))
  mtmtd = mblnt + "-" + mtgli + "-" + mthlt
End If

```

```

'-----
'----- cari di masdw
'-----

```

```

mketemu1 = "0"
mada = "0"
Set emprssetd = New ADODB.Recordset
SQLbaca3 = "Select * from masdw where dw01="" & MDOSNIP & "" "
Set emprssetd = condba.Execute(SQLbaca3, , adCmdText)
If emprssetd.EOF Then
  mada1 = "0"
Else
  'PindahIsiMemory

```

```

mada1 = "1"

```

```

mdnip = emprssetd("dw01")
mdnama = Trim(emprssetd("dw02"))
mDkdktlhr = emprssetd("dw03a1")
mDkotalhr = emprssetd("dw03a2")
mDtglhr = emprssetd("dw03b")
mDkdkel = emprssetd("dw04a")
mDkelam = emprssetd("dw04b")
mDkdkwn = emprssetd("dw05a")
mDkawin = emprssetd("dw05b")
mDkdagm = emprssetd("dw06a")
mDagama = emprssetd("dw06b")
mDalam = emprssetd("dw07a")
mDkdakta = emprssetd("dw07b1")
mDktalm = emprssetd("dw07b2")
mDkdjpn = emprssetd("dw08a1")
mDjnpen = emprssetd("dw08a2")
mDkdpen = emprssetd("dw08b1")
mDnmpen = emprssetd("dw08b2")
mDlulus = emprssetd("dw08c")
mDkdins = emprssetd("dw09a1")
mDnmms = emprssetd("dw09a2")
mDkdunt = emprssetd("dw09b1")
mDnmunt = emprssetd("dw09b2")
mDkdgol = emprssetd("dw10a1")
mDgolru = emprssetd("dw10a2")
mDthnms = emprssetd("dw10b")
mDblnms = emprssetd("dw10c")
mDtmtpk = emprssetd("dw10d")
mDjnjab = emprssetd("dw11a1")
mDnmjnjab = emprssetd("dw11a2")
mDkdjab1 = emprssetd("dw11b1")
mDnmjab2 = emprssetd("dw11b2")
mDnmjab1 = emprssetd("dw11b3")
mDtmjtb = emprssetd("dw11c")
mDkdesl = emprssetd("dw11d1")
mDeselon = emprssetd("dw11d2")

```

```

If mDjnjab = "2" Then
  mDtmjtb = mltmbd
Else
  mDtmjtb = "01-01-1900"
End If

```

End If

```
Set recset1 = New ADODB.Recordset
SQLcari1 = "Select * from masdw where dw01="" & MDOSNIP & "" and dw10a2 "" & mgoird & ""
Set recset1 = condbA.Execute(SQLbaca3, , adCmdText)
```

If recset1.EOF Then

If mada1 = "1" Then

-----ambil memory dari masdw

masal = "masdos"

msts = "2"

mtotal1 = mtotal1 + 1

Set recset2 = New ADODB.Recordset

```
SQLtulis2 = "insert into masdw (dw01,dw02, dw03a1,
dw03ab,dw03b,dw03a2,dw04a,dw04b,dw05a,dw05b,dw06a,dw06b,dw07a,dw07b1 " _
& ",dw07b2, dw08a1,dw08a2,dw08b1,dw08b2,dw08c,dw09a1,dw09a2,dw09b1,dw09b2,dw10a1,dw10a2, dw10b, dw10c,
dw10d " _
& ",dw11a1,dw11a2,dw11b1,dw11b2,dw11b3,dw11c,dw11d1,dw11d2,dw12,dw13a,dw14,dwsts) Values (" & mdnip & ", " &
mdnama & ", " & mDkdktlhr & ", " _
& ", " & mdkotalhr & ", " & mDtglhr & ", " & mDkdkel & ", " & mDkelam & ", " & mDkdkwn & ", " & mDkawin & ", " _
& ", " & mDkdagm & ", " & mDagama & ", " & mDalam & ", " & mDkdakta & ", " & mDktalm & ", " & mDkdjpn & ", " & mDjnpen
& ", " _
& ", " & mDkdpen & ", " & mDnmpen & ", " & mDlulus & ", " & mDkdins & ", " & mDnmins & ", " & mDkdunt & ", " & munitd &
" _
& ", " & mkgold & ", " & mgoird & ", " & mskthd & ", " & mskbltd & ", " & mtmtbd & ", " & mDjnjab & ", " & mDnmjnjab & ", " &
mdkdjab1 & ", " _
& ", " & mDnmjab2 & ", " & mjabtd & ", " & mdtmtjb & ", " & mdkdesl & ", " & mdeselon & ", " & mtunjb & ", " & mDgajibr & ", "
& masal & ", " & msts & ")"
```

Set recset2 = condbA.Execute(SQLtulis2, , adCmdText)

Else

masal = "masdos"

msts = "2"

mtotal1 = mtotal1 + 1

Set recset2 = New ADODB.Recordset

```
SQLtulis2 = "insert into masdw
(dw01,dw02,dw03b,dw10a1,dw10a2,dw10b,dw10c,dw10d,dw09b2,dw11b3,dw13a,dw08b2,dw14,dwsts) values (" & MNIPd & ", " &
mnamad & ", " & mglhd & ", " & mkgold & ", " _
& ", " & mgoird & ", " & mskthd & ", " & mskbltd & ", " & mtmtd & ", " & munitd & ", " & mjabtd & ", " & mgajid & ", " & mskld
& ", " & masal & ", " & msts & ")"
```

Set recset2 = condbA.Execute(SQLtulis2, , adCmdText)

End If

Else

End If

emprsetc.MoveNext
progresbar

Loop

ltranmasdos.Caption = mtotal1
Kotak12.BackColor = &HFF00&

```
'-----
' verifikasi data maskp
'-----
```

mtotal = 0

Set emprsetA = New ADODB.Recordset

SQLhtg = "Select count(*) as jumdata from Vkp"

Set emprsetA = condbA.Execute(SQLhtg, , adCmdText)

If emprsetA.EOF Then

mtotal = 0

Else

mtotal = emprsetA("jumdata")

End If

lmaskp.Caption = mtotal

```
'----- mulai verifikasi master kp
```

mtotal1 = 0

Set emprsetf = New ADODB.Recordset

SQLbaca3 = "Select * from vkp"

```
Set emprsetf = condbA.Execute(SQLbac3, , adCmdText)
```

```
Do Until emprsetf.EOF
```

```
mkanip = emprsetf("kp01a")
mkanama = emprsetf("kp02")
mkakdlh = emprsetf("kp03a")
mkatmlh = emprsetf("kotalahir")
mktgllh = emprsetf("kp03b")
mkakdin = emprsetf("kp04a")
mkains = emprsetf("instansi")
mkakdun = emprsetf("kp05e")
mkaunit = emprsetf("unitKerja")
mkakdjg = emprsetf("kdjenjang")
mkajjg = emprsetf("NamaJenang")
```

```
mkakdp = emprsetf("kp05e")
mkapddk = emprsetf("JurusanPendidikan")
'----- konversi tanggal lahir
If IsNull(emprsetf("kp03b")) Or Len(Trim(emprsetf("kp03b"))) < 10 Then
mktgllhr = "01-01-1900"
```

```
Else
m1 = Left(emprsetf("kp03b"), 2)
m2 = Mid(emprsetf("kp03b"), 4, 2)
m3 = Right(emprsetf("kp03b"), 4)
mktgllhr = m2 + "-" + m1 + "-" + m3
End If
```

```
'-----
mkakdgl = Left(emprsetf("kp08ab"), 2)
mkagolu = emprsetf("golru")
mkatmt = emprsetf("kp08cb")
mkath = Right(emprsetf("kp08ab"), 2)
mkabl = emprsetf("kp08bb")
mkagaji = Val(emprsetf("kp08gb"))
mkajab = emprsetf("kp08fb")
```

```
If Len(Trim(emprsetf("kp08cb"))) < 10 Or IsNull(emprsetf("kp08cb")) Then
mtmtk = "01-01-1900"
```

```
Else
mblnk = Mid(emprsetf("kp08cb"), 4, 2)
mtgik = Left(emprsetf("kp08cb"), 2)
mthnk = Right(emprsetf("kp08cb"), 4)
mtmtk = mblnk + "-" + mtgik + "-" + mthnk
End If
```

```
mketemu3 = "0"
mada3 = 0
```

```
Set emprsetd = New ADODB.Recordset
SQLbac3 = "Select * from masdw where dw01=" & mkanip & ""
Set emprsetd = condbA.Execute(SQLbac3, , adCmdText)
```

```
mketemu3 = "0"
If emprsetd.EOF Then
mada2 = "0"
'PindahIsiMemory
```

```
Else
mada2 = "1"
'PindahMemory
```

```
mkpnip = emprsetd("dw01")
mkpnama = emprsetd("dw02")
mkpkdktlhr = emprsetd("dw03a1")
mkpkotalhr = emprsetd("dw03a2")
mkptgllhr = emprsetd("dw03b")
mkpkdkel = emprsetd("dw04a")
mkpkelam = emprsetd("dw04b")
mkpkdkwn = emprsetd("dw05a")
mkpkawin = emprsetd("dw05b")
mkpkdagm = emprsetd("dw06a")
mkpagama = emprsetd("dw06b")
mkpalam = emprsetd("dw07a")
mkpkdcta = emprsetd("dw07b1")
mkpktalm = emprsetd("dw07b2")
mkpkdjpn = emprsetd("dw08a1")
mkpjnpn = emprsetd("dw08a2")
mkpkdpen = emprsetd("dw08b1")
mkpnmpn = emprsetd("dw08b2")
mkplulus = emprsetd("dw08c")
mkpkdins = emprsetd("dw09a1")
mkpnmins = emprsetd("dw09a2")
```



```
-----
verifikasi masnp
-----
```

```

mtotal1 = 0
Set emprssetA = New ADODB.Recordset
SQLhtg = "Select count(*) as jumdata from vnp"
Set emprssetA = condbA.Execute(SQLhtg, , adCmdText)

If emprssetA.EOF Then
    mtotal = 0
Else
    mtotal = emprssetA("jumdata")
End If

Imsnp.Caption = mtotal

Set emprsseth = New ADODB.Recordset
SQLbaca2 = "Select * from vnp"
Set emprsseth = condbA.Execute(SQLbaca2, , adCmdText)
mtotal1 = 0
Do Until emprsseth.EOF
    -----
    MNIPn = emprsseth("nip")
    mnaman = Trim(emprsseth("nama"))

    mtmbn = emprsseth("tmb")
    mkgoln = emprsseth("golru")
    mgolrn = Trim(emprsseth("GolruNP"))
    mskthn = emprsseth("msthb")
    mskbln = emprsseth("msblb")

    munitn = Trim(emprsseth("uk1"))
    mjabtn = Trim(emprsseth("jabbar"))
    mgajin = emprsseth("gaji")
    If IsNull(emprsseth("pddk")) Then
        mskln = ""
    Else
        mskln = emprsseth("pddk")
    End If

    ----- ubah tanggal lahir
    If IsNull(emprsseth("tglhr")) Then
        mtglhd = "01-01-1900"
    Else
        mblnlh = Trim(Str(Month(emprsseth("tglhr"))))
        mtglh = Trim(Str(Day(emprsseth("tglhr"))))
        mthlhr = Trim(Str(Year(emprsseth("tglhr"))))
        mtglhn = mblnlh + "-" + mtglh + "-" + mthlhr
    End If

    ----- ubah tmt kenaikan pangkat
    If IsNull(emprsseth("tmb")) Then
        mtglhn = "01-01-1900"
    Else
        mblnl = Trim(Str(Month(emprsseth("tmb"))))
        mtgl = Trim(Str(Day(emprsseth("tmb"))))
        mthlt = Trim(Str(Year(emprsseth("tmb"))))
        mtmtd = mblnl + "-" + mtgl + "-" + mthlt
    End If

    -----
    cari di masdw
    -----

    mketemu4 = "0"
    mada4 = 0
    Set emprsseti = New ADODB.Recordset
    SQLbaca4 = "Select * from masdw where dw01="" & mnip & ""
    Set emprsseti = condbA.Execute(SQLbaca4, , adCmdText)
    mketemu3 = "0"
    If emprsseti.EOF Then
        mada4 = "0"
    Else
        mada4 = "1"
        mul4 = mul4 + 1

    mnpnip = emprsseti("dw01")
    mnpnama = emprsseti("dw02")
    mnpkdktlhr = emprsseti("dw03a1")

```

```

mnpkotalhr = emprseti("dw03a2")
mnpplghr = emprseti("dw03b")
mnpkdkel = emprseti("dw04a")
mnpkelam = emprseti("dw04b")
mnpkdwn = emprseti("dw05a")
mnpkawin = emprseti("dw05b")
mnpkdagm = emprseti("dw06a")
mnpagama = emprseti("dw06b")
mnpalam = emprseti("dw07a")
mnpkdka = emprseti("dw07b1")
mnpkdalm = emprseti("dw07b2")
mnpkdjpn = emprseti("dw08a1")
mnpjnpn = emprseti("dw08a2")
mnpkdpen = emprseti("dw08b1")
mnpnmpen = emprseti("dw08b2")
mnpulus = emprseti("dw08c")
mnpkdins = emprseti("dw09a1")
mnpnmins = emprseti("dw09a2")
mnpkdunt = emprseti("dw09b1")
mnpnmunt = emprseti("dw09b2")
mnpkdgol = emprseti("dw10a1")
mnpgolru = emprseti("dw10a2")
mnpthnms = emprseti("dw10b")
mnpblnms = emprseti("dw10c")
mnpmtkp = emprseti("dw10d")
mnpjnjab = emprseti("dw11a1")
mnpnmjnjab = emprseti("dw11a2")
mnpkdjab1 = emprseti("dw11b1")
mnpnmjab2 = emprseti("dw11b2")
mnpnmjab1 = emprseti("dw11b3")
mnpmtjib = emprseti("dw11c")
mnpkdesl = emprseti("dw11d1")
mnpeselon = emprseti("dw11d2")

```

End If

Set recset2 = New ADODB.Recordset

SQLcari1 = "Select * from masdw where dw01="" & mnpip & "" and dw10a2 = "" & mkagolru & ""

Set recset2 = condbA.Execute(SQLbaca3, , adCmdText)

If recset1.EOF Then

 If mada4 = "0" Then

 mnpkdgol = mkkdgol

 mnpgolru = mkgolru

 mnpthnms = mkth

 mnpblnms = mmsblb

 mnpngajibr = mkgaji

 ----- tanggal

 mnpmtkp = mktmt

 mnpplghr = mdgllhr

 mnpmtkp = mdostmtb

 masal1 = "masnp"

 msts1 = "2"

 Set emprsetg = New ADODB.Recordset

 SQLtulisul3 = "insert into masdw (dw01,dw02, dw03a1,dw03a2,dw04a,dw04b,dw05a,dw05b,dw06a,dw06b,dw07a,dw07b1, _
 & ", dw07b2, dw08a1,dw08a2,dw08b1,dw08b2,dw08c,dw09a1,dw09a2,dw09b1,dw09b2,dw10a1,dw10a2, dw10b, dw10c" _
 & ", dw11a1, dw11a2,dw11b1,dw11b2,dw11b3,dw11d1,dw11d2,dw12,dw13a,dw14,dwsts) Values (" & mnpnip & ", " &

mnpnama & ", " & mnpkdkihr & " " _
 & ", " & mnpkotalhr & ", " & mnpkdkel & ", " & mnpkelam & ", " & mnpkdkwn & ", " & mnpkawin & " " _
 & ", " & mnpkdagm & ", " & mnpagama & ", " & mnpalam & ", " & mnpkdka & ", " & mnpkdalm & ", " & mnpkdjpn & ", " &

mnpjnpn & " " _
 & ", " & mnpkdpen & ", " & mnpnmpen & ", " & mnpulus & ", " & mnpkdins & ", " & mnpnmins & ", " & mnpkdunt & ", " &

mnpnmunt & " " _
 & ", " & mnpkdgol & ", " & mnpgolru & ", " & mnpthnms & ", " & mnpblnms & ", " & mnpjnjab & ", " & mnpnmjnjab & ", " &

mnpkdjab1 & " " _
 & ", " & mnpnmjab2 & ", " & mnpnmjab1 & ", " & mnpkdesl & ", " & mnpeselon & ", " & mtunjib & ", " & mnpngajibr & ", " &

masal1 & ", " & msts1 & ")"

 Set emprsetg = condbA.Execute(SQLtulisul3, , adCmdText)

 mtotal1 = mtotal1 + 1

Else

 mtotal1 = mtotal1 + 1

 masal = "masnp"

 msts = "2"

 mtotal1 = mtotal1 + 1

 Set recset2 = New ADODB.Recordset

```

SQLtulis2 = "insert into masdw
(dw01,dw02,dw03b,dw10a1,dw10a2,dw10b,dw10c,dw10d,dw09b2,dw11b3,dw13a,dw08b2,dw14,dwsts) values (" & MNIPn & "," &
mnaman & "," & mtglhn & "," & mkgoln & ""
& "," & mgolrn & "," & mskthn & "," & mskbln & "," & mtmtn & "," & munitn & "," & mjabtn & "," & mgajin & "," & mskln
& "," & masal & "," & msts & ")"

```

```

Set recset2 = condbA.Execute(SQLtulis2, , adCmdText)

```

```

End If

```

```

Else
End If

```

```

emprseth.MoveNext

```

```

progresbar

```

```

Loop

```

```

!tltp.Caption = mtotal1

```

```

kotak14.BackColor = &HFF00&

```

```

'-----'
' verifikasi pensiun
'-----'

```

```

mtotal5x = 0

```

```

mtotal1 = 0

```

```

Set emprsetj = New ADODB.Recordset

```

```

SQLhtg = "Select count(*) as jumdata from maspens"

```

```

Set emprsetj = condbA.Execute(SQLhtg, , adCmdText)

```

```

If emprsetj.EOF Then

```

```

mtotal = 0

```

```

Else

```

```

mtotal = emprsetj("jumdata")

```

```

End If

```

```

!maspens.Caption = mtotal

```

```

Set emprsetk = New ADODB.Recordset

```

```

SQLpensiun = "Select * from maspens"

```

```

Set emprsetk = condbA.Execute(SQLpensiun, , adCmdText)

```

```

Do Until emprsetk.EOF

```

```

mtotal1 = mttotal1 + 1

```

```

mnippen = emprsetk("nip")

```

```

Set emprsetl = New ADODB.Recordset

```

```

SQLcaridw = "Select * from masdw where dw01=" & mnippen & ""

```

```

Set emprsetl = condbA.Execute(SQLcaridw, , adCmdText)

```

```

If emprsetl.EOF Then

```

```

mdwsts = "1"

```

```

Else

```

```

mdwsts = "0"

```

```

mtotal5x = mtotal5x + 1

```

```

Set emprsetm = New ADODB.Recordset

```

```

SQLubahsts = "update masdw set dwsts=" & mdwsts & " where dw01=" & mnippen & ""

```

```

Set emprsetm = condbA.Execute(SQLubahsts, , adCmdText)

```

```

End If

```

```

emprsetk.MoveNext

```

```

Loop

```

```

!tltpens.Caption = mtotal5x

```

```

kotak15.BackColor = &HFF00&

```

```

End Sub

```

```

Private Sub CmdRiset_Click()

```

```

'_
mpsn = MsgBox(" Proses Ulang DAta Warehouse ?", vbOKCancel, " Perhatian ")

```

```

If mpsn = 1 Then

```

```

Set emprsetA = New ADODB.Recordset

```

```

SQLhtg = "Truncate Table masdw"

```

```

Set emprsetA = condbA.Execute(SQLhtg, , adCmdText)

```

```

End If

```

```

End Sub

```

```

Private Sub Form_Load()

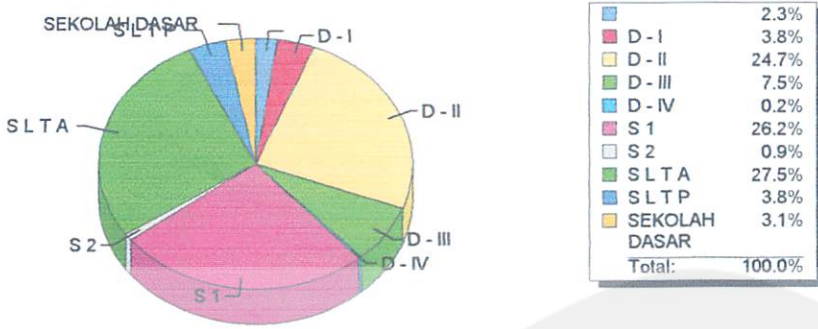
```

```
'--  
Set condbA = New ADODB.Connection  
condbA.ConnectionString = "Provider=MSDASQL;driver={SQL Server};" & _  
"Persist Security info=False;Database=dwemp;" & _  
"server=serv2003; UID=sa; PWD=" & _  
condbA.Open  
Timer1.Interval = 500  
  
End Sub  
Private Sub progresbar()  
'--  
kotak2.Width = (mtotal1 / 4050) * mtotal  
  
End Sub  
Private Sub PindahMemory()  
'--  
  
End Sub  
Private Sub Timer1_Timer()  
'--  
kotak2.Width = (mtotal1 / 4050) * mtotal  
End Sub
```

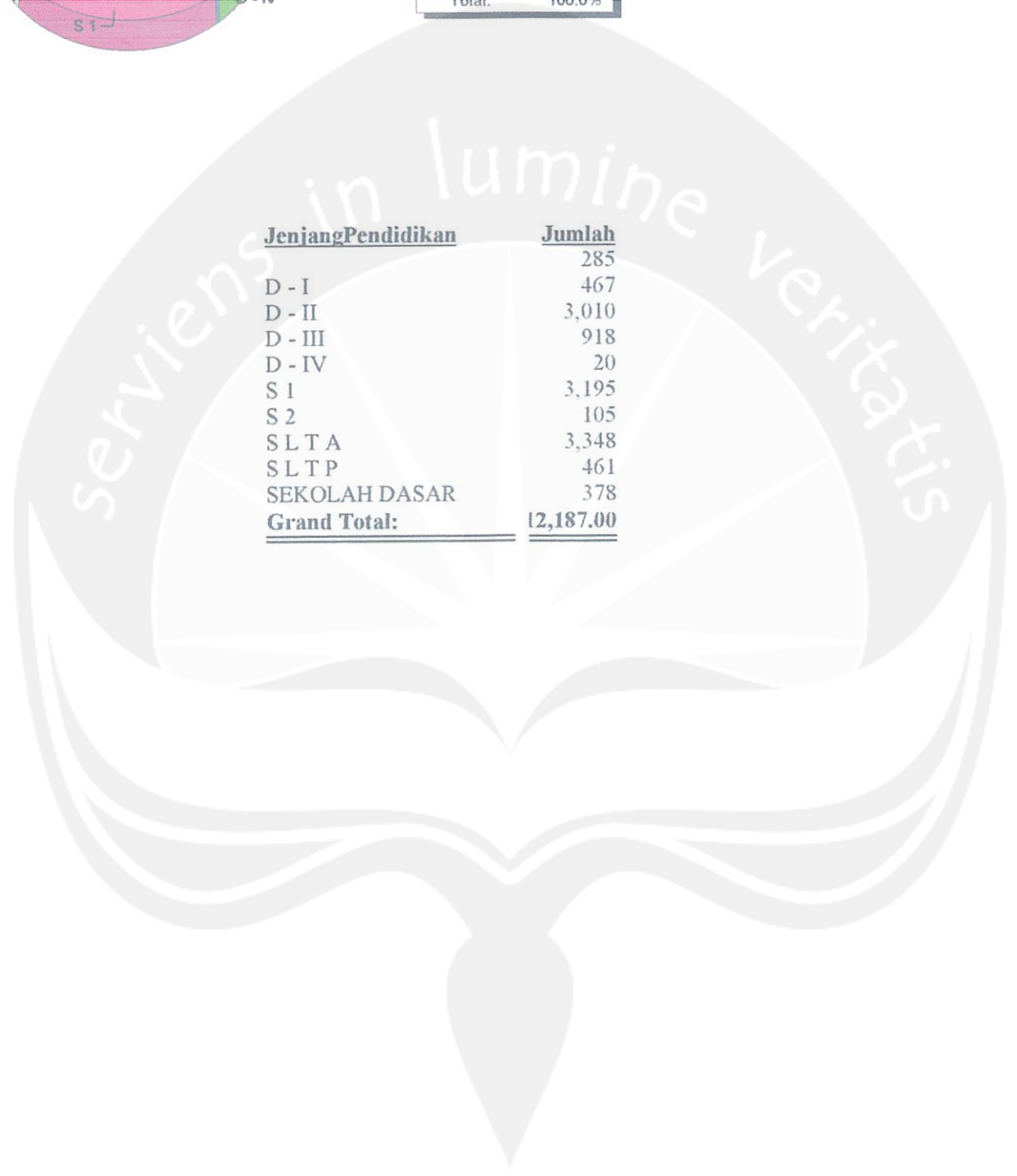


Grafik Pendidikan

(sebaran jenjang pendidikan)

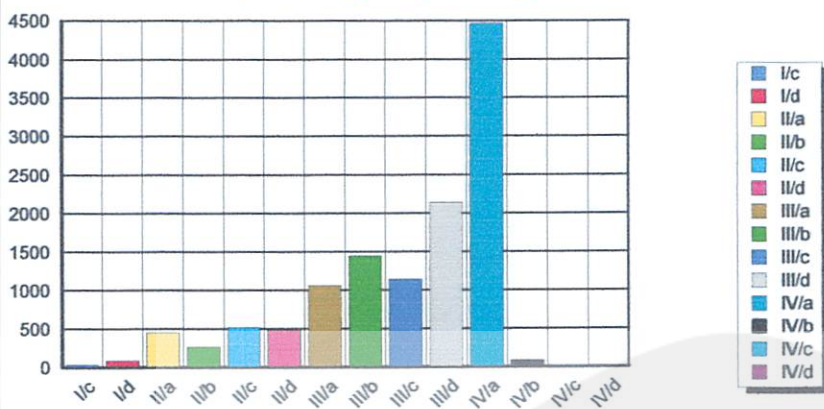


<u>Jenjang Pendidikan</u>	<u>Jumlah</u>
D - I	285
D - II	467
D - III	3,010
D - IV	918
D - IV	20
S 1	3,195
S 2	105
SLTA	3,348
SLTP	461
SEKOLAH DASAR	378
Grand Total:	12,187.00



Grafik Golongan Ruang

(sebaran golongan ruang)



7/7/2007

<u>GolRuang</u>	<u>Jumlah</u>
I/c	33
I/d	89
II/a	449
II/b	267
II/c	516
II/d	484
III/a	1,057
III/b	1,447
III/c	1,141
III/d	2,137
IV/a	4,463
IV/b	85
IV/c	17
IV/d	2
<u>Grand Total:</u>	<u>12,187.00</u>